



Photography Interesting Sideline of Boat Fans

Many of the 37,000,000 American men and women and children who participate in the mushrooming boating sport have found that one of the enjoyable adjuncts of the sport is photography. Well-taken pictures provide the boating family with visual memories of their days afloat, and the days and scenes they want to remember.

Few other recreational activities offer better opportunities for the nation's "shutterbugs" than boating. Both still photography and motion pictures are used. Pictures of the sky and fascinating cloud formations and the water itself, sleek craft, fishing, water skiing, swimming, boat races—all are part of the boating sport and photographable.

Taking pictures on or near the water, however, poses problems that the photographer would not normally find ashore. Certain precautions are also necessary to prevent damage to photographic equipment and film. Spray will corrode a camera and will cause

working parts to bind. Salt water spray may etch the lens. The good photographer will make sure that his camera and equipment is protected when he goes aboard.

Carrying Case
A leather carrying case will provide a certain amount of weather protection, but experts suggest that the nautical lensman wrap his equipment, the camera especially, in oil-skin or a thick plastic bag when not in use.

Another precaution that the photographer must take is to protect his film from fogging, which is caused by hot sun's rays beating on the camera. Camera and film must be kept in a cool, shaded place except when filming.

Some hints on nautical photography are: When shooting from a moving boat, don't attempt to take a picture while facing into the wind. Spray might get into the camera. Also, water reflects light, and an exposure meter should be used to provide the correct lens opening. If in doubt, close down one more stop on a bright day.

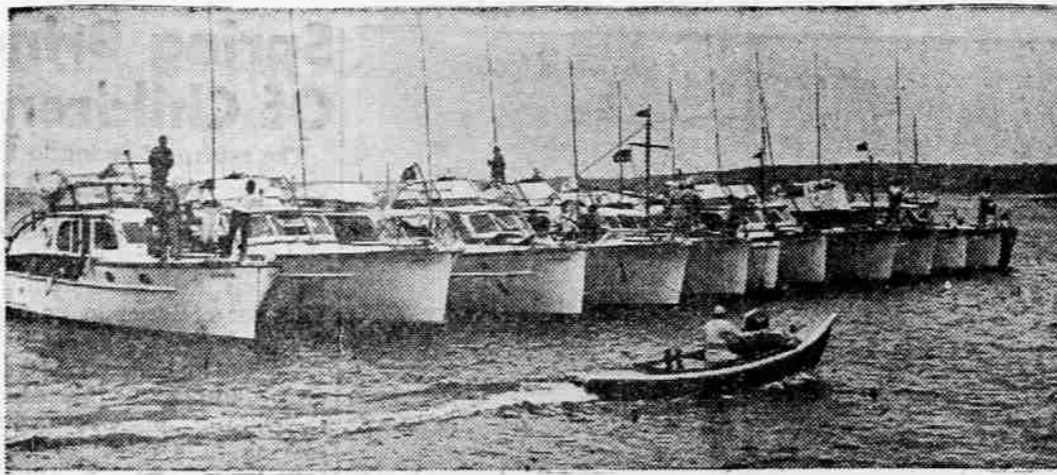
On water there is additional ultraviolet light, which is normally absorbed by trees, grass and ground surfaces. This can be overcome by using a filter on the lens which does not change the exposure.

Motion is another problem, and especially for the still photographer, in shooting nautical scenes. On a small boat the camera man must learn to "give" with the movement of the craft by standing with his feet apart and firmly set.

ENTER SILK
Silk coats bring back into the spring picture, with silk and worsted mixtures, silk otoman and douppioni weaves.

Nine motors are being offered by West Bend Aluminum ranging from the small two-horsepower Shrimp to the 40-horsepower Golden Shark.

Varnish should never be shaken. Shaking causes bubbles that are often impossible to remove in brushing. Keep charts up to date. Changes are constantly being made in buoys, markers and depths. New charts each year are a must for the serious sailor.



VARIED SIZES—Fun afloat is for all ages no matter what size boat you have. A fleet of 42-foot Matthews cruisers raft up in a gala rendezvous (top) while two youngsters have their own kind of adventuresome fun in a tiny fiber glass dinghy (below).



NEW TREND—Knitted wool jackets are the new trend in leisure time, coupled with a continued high buying power of the public are considered the primary impetus behind last year's record boating business volume.

Retail Sales of Recreation Boats Reach New Mark

Recreational boating sales at the retail level hit the \$2 billion mark for the first time in 1958 and indications are that sales will spiral over this charmed figure again in 1959.

Despite the recession of the past year, America's recreational boating enthusiasts spent \$2,085,000,000 for new and used boats, outboard motors and marine engines, fuel, insurance, equipment, dockage, storage and repairs. This compared with \$1,912,000,000 spent in 1957 with marine dealers, hardware and paint stores, boat yards and a host of other local merchants.

Various factors combining to boom recreational boating in 1958 despite generally adverse business conditions. The increasing population, longer vacation periods and greater leisure time, coupled with a continued high buying power of the public are considered the primary impetus behind last year's record boating business volume.

Better Outlook
These same continuing factors, plus a better general business outlook and the up-trend in employment indicate that 1959 will carry the retail boating volume over last year's record peak.

New boat production set a record in 1958 according to statistics compiled by the National Association of Engine and Boat Manufacturers. There are some 7,300,000 recreational craft estimated to be in use on waters of the United States today with 37,000,000 persons participating in the sport, making it the nation's leading family recreation.

The boating industry consumed copious quantities of raw materials in turning out recreational craft in 1958, including 18,450 tons of fiberglass and resins, 23,500 tons of aluminum and 171 million square feet of marine plywood. The painting of new boats and the refurbishing of craft in use required nearly 10.5 million gallons of marine finishes and varnish.

Cruising over the waterways of the nation, the power boat fleet—some 4,415,000 in-borders, outboards and auxiliaries—burned 404 million gallons of gasoline, 22 million gallons of diesel fuel and 20 million gallons of lubricating oil.



SIMPLE DESIGN—Simply designed to emphasize the fabric is this eyelet-embroidered broadcloth blouse. Bow trim suggests a "lifted look." By Rhoda Lee.

Courtesy Necessary By Boat Operator

Owners of all types of boats must know the rules and regulations governing their craft on the different waters and within certain instances which might occur.

Above all, the boat operator and owner must remember that courtesy is necessary at all times.

Here are six basic rules suggested by the National Association of Engine and Boat Manufacturers for motorboat owners:

1. Always keep to the right.
2. Rowboats, canoes and sail boats, except when overtaking another craft, always have the right of way; as does any craft approaching from the right.
3. When operating on the waters under the jurisdiction of the federal government, or the various states, always have full knowledge of the rules or regulations governing those waters and the equipment required for your boat.
4. Remember that some states prohibit trolling or shooting from any boat powered with a motor.
5. It is dangerous to speed too close to shore. You will endanger the lives of bathers or fishermen.
6. Cradle and bunker padding must be checked for frayed or torn places. Replace if needed.
7. Check coupler and replace if lip is sprung. Check coupler alignment with tongue. Straighten if not true.

Tips Given for Boat Trailers

When spring weather shows up, the boating enthusiast knows it's time to tune up his equipment for the coming season.

For those with boat trailers, chances are they spent the winter months outside. Even if the trailer is stored in the garage, several precautions should be taken before putting it on the road.

1. Sand or file rusted surfaces and retouch.
2. Replace winch-rope or cable if it shows any fray.
3. Wheel bearings should be cleaned and repacked. Have bearings checked for wear. Replacement is cheaper and less time consuming than a roadside breakdown.
4. Tighten all bolts.
5. Lubricate all moving parts with heavy grease.

Glasspar
See It at THE SPORTSFAIR!

16' DEL MAR CRUISER
\$1645 DELIVERED IN MEDFORD
10% Down 30 MONTHS TO PAY

MEDFORD MARINE CO.
2060 West Main

SOBBING SIMS SAYS:

Take the Hard Work out of Yard Work with a **Sunbeam POWER MOWER**

Your most outstanding buy

Sunbeam Self-Propelled GAS ROTARY

- Positive geared tooth drive belt. No slippage—never needs adjusting.
- Specially designed steel housing—ribbed, flanged and reinforced for extra support.
- Adjustable speed control on handle.
- Close side trim up to walks, fences, etc.

PRICED AT ONLY **\$11495**
Complete with leaf mulch

BE MODERN...MOW ELECTRICALLY
Starts at snap of switch...no gas to buy or store
Operates on residential current

Sunbeam Twin Blade ELECTRIC ROTARY

- Lightweight—only 29 lbs.
- Easy to use—easy to store
- 2-way mowing—swing-over handle

PRICED AT ONLY **8950**
Rugged Extension Cords
100 Ft. Cord \$9.95
150 Ft. Cord \$14.95

Operates on residential current **\$950 Down**

FREE HOME TRIAL on Sunbeam Electric Mower!
You try it on your lawn today!

FREE SUNBEAM Rain King SPRINKLER
With every Sunbeam Mower!

Trade in Your Old Mower On a New One at **SIMS CYCLE & HOBBY SHOP**
23 North Fir — Next to Mail Tribune
Phone SP 2-2472

Pear Blossom Special!

SAVES SPACE SAVES DOLLARS!

NEW 1959 WESTINGHOUSE 30" SPEED ELECTRIC RANGE

Only **\$17995** TERMS

Model DM-30

- LOOK AT ITS FEATURES
- ★ **Perfect Baking**—with exclusive Westinghouse Spread-Even Heaters.
 - ★ **Smokeless Broiling**—with fast infrared Corox® element.
 - ★ **100° Heats**—for precise surface cooking, in addition to five marked heats.
 - ★ **Divided top**—for ample work space. No-drip edge prevents spillovers.

NEW COOKING MIRACLE!
Ask about the exclusive Westinghouse Serv-Temp Roast Guard that keeps meat hot, juicy, done to taste even if dinner's delayed for hours.

YOU CAN BE SURE...IF IT'S **Westinghouse TROWBRIDGE & FLYNN ELECTRIC CO.**
214 West Main • Ph. SP 3-6241

OPEN EVERY MONDAY TILL 9 P.M.
Remember, you can park free in our parking lot directly behind our store.

Pear Blossom SPECIALS

SWEATERS
Vest - V-Neck - Bulkie Broken Sizes and Colors
Reg. \$3.95 to \$10.00
\$2.88 to \$6.88

SPORT SHIRTS
Long and Short Sleeve
Reg. 2.95 to \$10.00
\$1.88 to \$6.88

DRESS SHIRTS
Whites and Colors Broken sizes
Values to \$5.00
\$2.88

Washable, Casual Slacks
Denim, Polished Cotton, etc.
REG. 4.95 VALUE **Now \$2.88**

SLACKS
Regular \$9.95 to \$19.95
NOW ONLY **\$6.88 to \$12.88**

FAMOUS NAME SHOES
Values to \$20.95
\$5.95 to \$13.95

ROBINSON BROS.
THE BUDS FOR QUALITY DUDS
Next to Pick's Apparel Medford, Oregon