



EMPIRE THEME—Modern interpretation of the empire theme creates a thoroughly contemporary fashion for the spring wardrobe. In geranium pink British woolen mohair, this softly tailored suit has a standaway notched shawl collar, low double-breasted front, gathered back. By George Carmel.

Basic Steps Will Help Outboard

- Putting your old outboard motor in shape for use again this boating season requires a few basic steps.
- Try these and have trouble-free outboating when the weather is nice:
1. Remove, clean and regap spark plugs.
 2. With spark plug wires attached to motor frame as a ground, spin motor rapidly a few times to remove excess oil from cylinders.
 3. Lubricate moving parts. Fill all grease fittings with proper grade of grease. Apply a little grease to throttle-magneto gear and other working parts of engine.
 4. Remove propeller and check for dents, cracks or chips. Straighten minor dents by tapping with wooden mallet. If prop is seriously damaged, take to repair shop.
 5. Clear propeller shaft of all impediments. Apply a thin coat of grease.
 6. Check shear pin. If bent, broken or damaged, replace with new one.
 7. Check gear case to be sure it is clear of water. Refill with fresh lubricant.
 8. Reassemble motor and "test run" in tank or barrel of water. Make final adjustments of carburetor, choke, etc.

Full Range of New American Outboard Motors for '59 Introduced at Show

The full range of new American outboard motors for 1959 introduced at the 49th National Motor Boat Show in New York featured modern styling, increase in horsepower-to-weight ration and the holding or lowering of prices.

About the smallest U.S. motor offered is the two-hp 28-pound Shrimp, made by West Bend. The largest is the 188-pound 70-hp Mercury Mark 78A. The former is one cylinder and the latter an inline six.

Chartering Boat Good for Budgets With Limitations

For the boat-minded family that wants to get afloat on its own craft — whether for the whole season or just for that two-week vacation—but whose budget is limited, the answer lies in buying a sound used craft, or perhaps chartering, the nautical term for renting.

But where to find the right boat? How to know what is safe, what is priced right and what exactly to expect in the way of performance? The yacht broker specializes in maintaining a listing of all kinds of family boats for sale — inboard cruisers, sailboats and even outboards — over a wide geographical area. Somewhere in his files undoubtedly lies the boat for you.

Being Introduced

A new 35-hp model, the Sovereign, is being introduced by Gale-Buccaneer for 1959 topping a line of seven new models with trim, modern styling and a new magneto that produces instant starting and smooth operation plus a new muting system that has an underwater exhaust, sealed powerhead mounted on rubber and an air-intake silencer.

Eight new "dynamically designed engines" are offered in the new Johnson line from three to 50 hp. Johnson calls its new 1959 design "form fitting silhouette" with the new motor cover fitted more "functionally" to the design of the motor itself. In addition, the new Johnson 50 hp has a propeller thinned to 12 1/2 inches and pitched to 14 inches compared with last year's 13-by-13 wheel. A new aluminum alloy is being used in the propeller to add strength and allow the unit to be more easily straightened if it is bent.

Power Classifications

Two new power classifications are included in the 20th anniversary Mercury motors: 15 and 35 hp models. The two-cylinder 15 hp brings the number of fishing class motors to four — six, 10, 15 and 22 hp. The four-cylinder "35" gives the firm five models — 35, 40, 45, 60 and 70 hp — the upper power range. Prices for 1959 range from \$225 for the six hp to \$925 without propeller for the 70 hp model. The new Mark 15A is priced at \$345 and the new Mark 35A at \$480. Mercury has also reduced prices on the Mark 10, to \$310, and the Mark 28A — 22 hp model — to \$410, both \$20 less than in 1958.



LEISURE TIME — Suggested for leisure time is high-waisted pink silk robe with pleated back, complemented by seamless stockings in "Hot Pink." The stockings by Hanes.

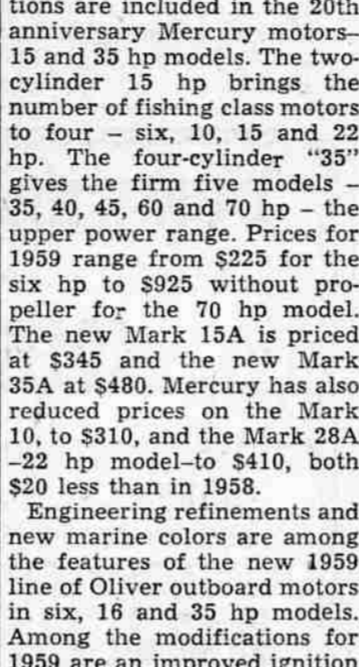
Sheath Styling In Maternity Wear

High-waisted sheath styling predominates in maternity fashion this spring, giving fabric interest and color first importance. Textured fabrics appear by day, while chiffon and printed silks and wool challis are liked for dressier outfits.

Checks and solids are often combined, sometimes in such off-beat combinations as orange and lavender. Other interesting color combinations, appearing in prints and plaids, include orange and turquoise and burgundy, black and navy. Neutral basics may be alternated with brilliant reds, hot pinks, willow greens, coral and gold.

High waistlines appear in the form of drawstring ties, front or central panel ties and bands, bolero effects and fringed ties or bows. Mix and match separates, tunic tops and blouson silhouettes are all popular.

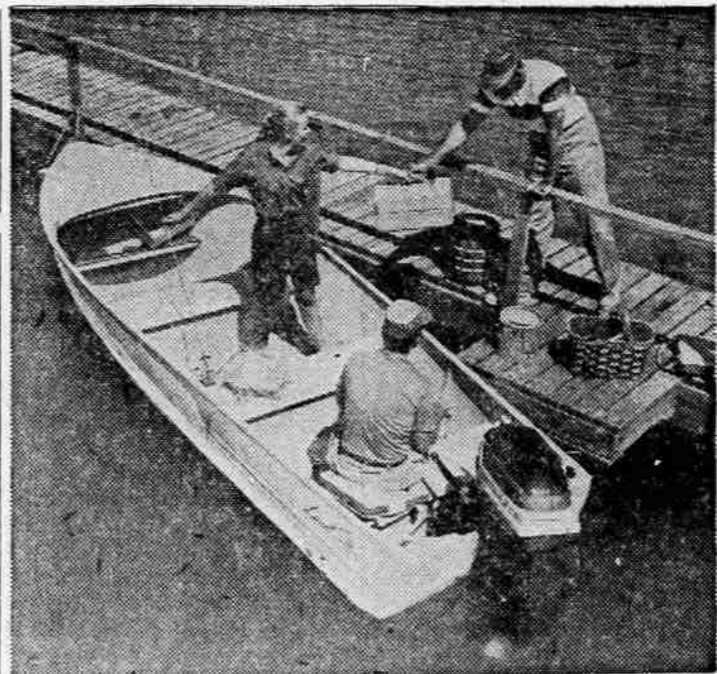
Among other favored styles are one-piece triangular shirt-dresses, high waisted shirtdresses and bodices softly gathered or smocked above the bustline.



SPORT COAT — The nubby touch will be popular in wool sport coats this spring. Model shown here is in gray, with lots of white flecks and nubs. Varsity-Town. Wool Bureau photo.



CHALK WHITE — Separates story, told in black and white, features chalk white tapered pants, striped pullover. "Permathal" "Everglaze" cotton knit.



IDEAL CRAFT—For an all-day fishing trip this sprightly 14-foot aluminum Lone Star King Commander makes an ideal craft for fishing, day camping, water skiing and plain boating fun.



PRINTS POPULAR

Prints on silks, cottons and blends are much in demand for spring. They have a modern art look of shock color contrasts in such combinations as orange and yellow, hot pink and red, blue and aqua, in abstract florals or paisley effects.

If clothing stowage is a problem there is usually room beneath the bunk mattress. Skirts, shirts, trousers and linens can be thusly stored. They will retain their crease if carefully placed and help make the bunk softer.

Natural Aids Help Boat Operators

Small boat operators without navigational charts on unfamiliar rivers or streams can use natural aids to keep from running aground.

If there are buoys, stakes or other navigational sign posts observe them. If not, then take advantage of deep water routes cut by the water flow.

A turbulent area on the water's surface is a warning that there is an underwater obstruction or a reef that should be avoided.

A ruffled "V" like flow of water pointing upstream is a fairly certain indication of a rock jutting close to the surface. Stay clear of this.

On straight stretches the deepest water is usually in the middle of a river. At bends, stick to the outside of the curve for the channel will be cut on the far side of the projecting shore line.

In sunlight, lighter patches of water are shallower than darker areas. After a heavy rain or high water keep an eye out for floating debris that may wash from the beach or river banks.

See and Play
THOMAS ORGAN
With Built-in
Stereophonic Phonograph
at the
MUSIC MART
For all your musical needs
111 West Main St. Phone SP 2-2022

See and hear Thomas Stereo-Organ demonstration on KBES-TV today at 5 p.m.
• We Give S&H Green Stamps •

See Our

Huge Boat Selection

Outboards, Cruisers, Runabouts and Dinghies

Tolly Craft Boats
P-14 Boats
Skagit Boats
Twin Trailers
Du Pont Paints
West-Glass
Dico Wheels
Delco Batteries
Life Preservers
Jet Line Hardware
Fire Extinguishers
JOHNSON MOTORS
Sales and Service

Visit the Sports Fair!
See and Compare Our Line

LITTRELL PARTS
319 E. 6th 116 S.W. M St.
SP 2-6235 GR 6-4428
Medford Grants Pass



FOR LATE DAY — Widened collar, self-rose give top interest to cashmere coat for late day. It's lined with silk print. By La Vigna in Einiger cashmere.



BRIGHT COLORS — Warm weather sportswear features lightweight fabrics and bright colors, as in this sport coat with burgundy and gold on navy. Fabric is blend of "Dacron" and cotton.

Pear Blossom SPECIAL

Big 3 H.P. Briggs & Stratton
Throttle Lever on the Handle!
Automatic Recoil Starter!
Adjustable Cutting Hts. 3/4" to 4"

WIZARD 22" CUSTOM MOWER 64⁹⁵
7.00 Down 1.25 Week

Season's bargain! Count the features: No oil and gas mixing; shatterproof steel base; hollow-ground Tornado blade! 8" wheels with individual adjustments for cutting heights. FREE leaf pulverizer! Hurry! Buy Now! 2X2923.

Western Auto 101 South Riverside
PHONE SP 2-6217
Open Mondays Till 9 p.m.

Docking Motorboat Easy With Practice

Docking a motorboat is easy to master with practice. Before attempting to dock, check wind and current. Always approach at slow speed and head into the wind or current whichever is the greater, in order to have the greatest control over your boat.

As you near the pier shift into neutral, let the engine idle so you may shift into reverse should you have misjudged your speed. To lose momentum short of the pier is no disaster and can easily be remedied with a little extra throttle. But if you overshoot, you can be in trouble.

Bring your boat in to a few feet from the pier and parallel to the planned mooring location. Turn your helm away from the pier, shift to reverse at slow throttle and the boat will move right alongside for a feather light landing.

PEAR BLOSSOM Specials

NORTHERN STAMPS ON ALL PURCHASES

SPORT KNIT SHIRTS
VALUES TO \$8.95 **\$2⁸⁸**

SOX Reg. 1.00 **79^c**

SPORT COATS
VALUES TO 39.50 **24⁸⁸**

morrison's men's wear
229 East Main Street

THURS. - FRI. - SAT.

• **PEAR BLOSSOM SPECIAL** •

HOLLYWOOD BEDS

Each Complete with Comfortable **SIMMONS** BOX SPRING & MATTRESS And Plastic Covered Head Board and Legs, Twin Size Only

49⁵⁰ Each Bed Complete

No Interest or Carrying Charges
At **WEEKS & ORR** You Pay Only for the Merchandise

WEEKS & ORR
Southern Oregon's Oldest and Largest Furniture Store