



PLAID RAINCOAT—Fashionable and fun in sunshine or showers is this grey, red and black plaid raincoat. Spring style notes include a deep roomy hood, tab sleeves, white pearl buttons and a tab closing that suggests an empire waistline. It's from Vendome Fashions, in Eastman Chromspun acetate.

Belts Prettier Shape Than Ever

Belts, sacked last year by the chemise, are back—and in prettier shape than ever. Gently contoured or straight, the majority of belts meant to be worn at the waist—not empire fashion—are slim. To compliment the "lifted look," belts take on a sash effect in soft, crushed leather to be worn wide and high above the waistline. For dressy wear belts are simply designed and, most of

ten, ornamentation is merely a pleating or a scalloping of the leather itself. For casual wear there are all sorts of amusing "hobby" belts made of glove-soft leather and ornamented with sports car insignia, foreign coins, sports symbols and other items. Others feature double strap effects in matching or contrasting leather, novelty closures, and leather overlays.

Proper Propeller Is Important to Good Pleasure Boating

One way to insure getting your full pleasure out of boating is to have the proper propeller on your motor. There are high-powered rigs unable to tow more than one water skier. Few boatmen seem to realize that a slight two-blade, high pitch racing propeller, which will spin a fragile racing craft at remarkable speed, will give no speed at all to an ordinary runabout. There is too much load for it to handle.

Even with today's outboard motors ranging from one and a half to 70-horsepower, some boatmen still keep the standard propeller that came with the engine no matter how highly powered their outboards might be. Their new motors with a potential of all-around service for many water sports are thus limited by "all purpose" inadequate propellers.

Different Props

Different props are made so one can be found to help the motor achieve optimum revolutions per minute on any particular boat. This, of course, is vital if the motor is to develop its rated power.

Skipper should remember each prop has two dimensions; diameter, or distance from tip to tip; and pitch, or the theoretical distance the propeller will travel through water in one revolution (not allowing for slippage), according to engineers of the Kiekhaefer Corp., makers of Mercury outboard engines.

The higher-pitch props, moving a greater distance through the water during each revolution, are naturally used for lighter loads and higher

speeds. At a rule, the lower the pitch the higher the pulling power and the higher the engine speed.

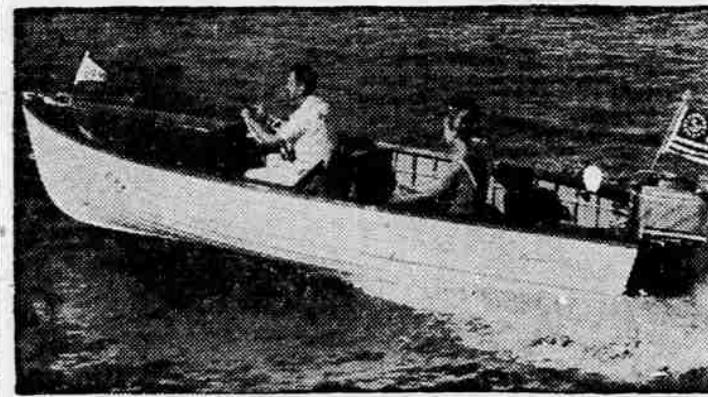
Pitched Too Low

A propeller pitched too low might attain all the speed you can expect from your boat but may permit the motor to rev too high. This means increased wear and possible serious damage to the motor. If you think your rig is not making the speed it should, it is possible your prop is too high-pitched—preventing the motor from revving to its proper speed.

So far as the number of blades is concerned, it is usually the rule that the two-blade propeller is used for speed and lighter loads. The three-blade prop is to give the larger blade area desirable for heavy duty.

COSTUME IDEAS

Pretty version of the costume suit has a print blouse with the new wider collar, which also serves as the collar of the suit. Other suits are ready for day or evening roles, with decollete satin overblouses.



GOOD SKI TOW—Sturdy lapstrake boat construction is popular this year for pleasure craft from 12 to 40 feet. This 15-foot Lyman outboard runabout can take motors up to 40 hp and makes a good ski tow boat or family craft.

Lions Auxiliary to Man Food Booth

Members of the Crater Lions Auxiliary will be aiding their husbands in their own fund raising project connected with the second annual Sportsfair.

The project will be a food booth at the Sportsfair at the Medford Armory April 10, 11 and 12. Proceeds will be contributed to the State Blind Institute in Salem every summer, and the Walter Dry Fund, which trains teachers of the blind.

Chairman for the Sportsfair food committee is Jeanette Dumas, with Mary Ann Gressitt, Jean Potucek, Loretta Shoop, Kris Hayes and Pearl Ferris serving with her.

"Those taking part in the booth during the Sportsfair will be June Barlow, Bede Mattson, Bert Safley, Inez Friel, Jean DeArmond, Oweta Richardson, Dale Hawkins, Kirs Hayes, Marie Dwyer, Fredene Doty, Minnie Ingram, Norma Larson, Everetta Irving, Pat Eastwood, Loretta Shoop and Betty McGinty.

On the committee for the Sportsfair parade, which is part of the Pear Blossom Festival, are chairman Everetta Irving and co-chairman Betty McGinty. The Crater Lions auxiliary plays a vital part in this event to help raise funds for the clubs' charities.

Mercy Flights to Have Display

Mercy Flights, Medford's non-profit air ambulance service, will have a display at the Crater Lions Sportsfair this week end.

After nearly 10 years of successful venture in the Rogue Valley, George Milligan, president, said that Mer-

cy Flights is still unique and is giving service to subscribers unequalled anywhere in the world.

The Mercy Flights planes and detailed information about the air ambulance service will be made available at their dis-

play at the Medford Armory during the Sportsfair. Volunteer pilots, doctors and nurses stand by 24 hours a day to man this service. Mercy Flights planes are the only civilian aircraft in the United States authorized to carry the Red Cross insignia, Milligan said.

SPRING HANDBAGS

Luscious New Colors

Shapely new styles to blend with your spring fashions—designed to provide carrying capacity a-plenty. Fine leathers or fabrics.

PEAR BLOSSOM SPECIAL

"The Teener Clutch"

Regular \$2.95 plus tax
ONLY \$1.49 plus tax

Use Your Charge Account

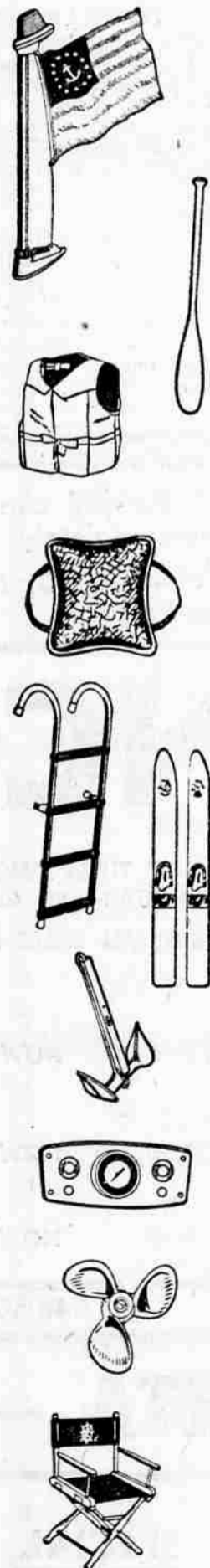
Sweem's
BOOKS • GIFTS • RECORDS
217 EAST MAIN, MEDFORD, OREGON

JOHNSTON STORES Sportsfair

Special

- Life Jackets
 - Life Cushions
 - Fire Extinguisher
 - Paddle
 - Anchor
 - Boat Ladder
 - Set of Name Letters
 - Marine Flag
 - Pair of Skis
 - Ski Tow Lines
 - Rear View Ski Mirror
 - Speedometer
 - Compass
 - Extra Prop.
 - 100' Poly Rope
 - Marine Chairs
 - Trailer Spare, Tire and Wheel
- Many Other Items to Choose From

\$150 to \$300
Worth at No Extra Cost to You



BOAT OUTFIT BONUS

\$150 to \$300 Worth of

Marine Accessories

IF YOU BUY YOUR BOAT OUTFIT NOW!

The Sportsfair preveues the opening season for fishing, water skiing and boating. Now is the time to choose a boat outfit of your own. You will save money too, if you buy your boat outfit now, at Johnston's Marine Store—\$150 worth of accessories at no extra cost to you, with each 15' Runabout, and up to \$300 worth with the purchase of a Crusier outfit. Now you can get a complete outfit, with all the trimmings, for just the base cost of the Boat, Motor, and Trailer. It's a big savings, if you buy now, during our Sportsfair Special

Visit the Sportsfair
Then Drive in To
JOHNSTON STORES
For The
BEST Boat Buy
And The
Boat Outfit Bonus

You can deal with confidence at our store. Our special prices are available to everyone, NOT just a special few. Our fair price policy assures you of the best deal possible without embarrassing price negotiation.



Choose From the Biggest Stock of Boats, Motors & Trailers in Town!

CONVENIENT TERMS TO SUIT YOU

JOHNSTON STORES

112 SOUTH RIVERSIDE

NORFIELD SHOE CO.

"Southern Oregon's Oldest Shoe Concern"
221 East Main • Phone SP 2-2123



Red Cross Shoes

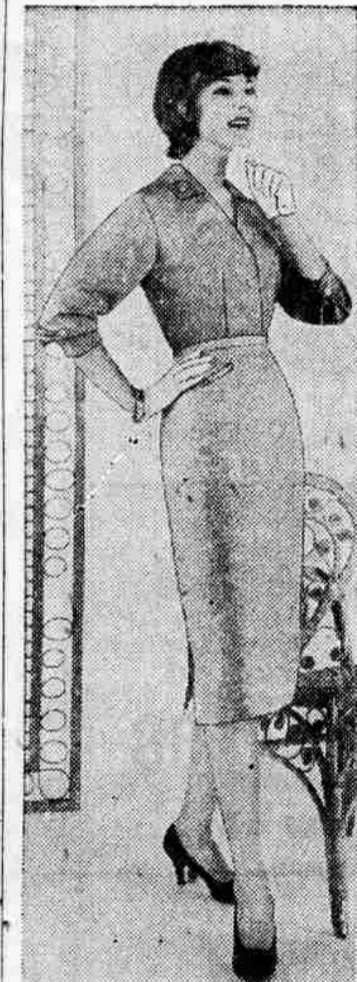


Pretty pumps... so new for now

Fresh and feminine to meet spring's mood... just two from our wonderful collection of the season's softest, prettiest pumps. Come see all the exciting styles... the luxurious leathers... feel how they unfold your foot in the caressing fashion that can only mean they're Red Cross Shoes.

Largest selling brand of fine footwear in the world. Styles from 10.95 to 14.95

This product has no connection whatever with The American National Red Cross



SILK SHIRT—Impeccably tailored silk shirt teams with tapered skirt in wicker worsted, a worsted-linen blend. By Evan Picone; Einiger skirt fabric.



LINEN KNIT—It's knit for classic ease and it's linen knit for news. Straight jacket tops a scoop-neck sheath. By Goldworm. For more ease, sheer nylon support stocking by Supp-hose.