

Wabash Forms Giant Lake Over Rich Farmland

Mount Carmel, Ill.—UPI—The flood-swollen Wabash river bulged into a giant lake 35 miles long and 14 miles wide at its widest point today, immersing thousands of acres of farmland in Illinois and Indiana.

The river, which earlier tore holes in levees at Russellville, Ill., and Oaktown, Ind., surged past Mount Carmel Wednesday night at 24.5 feet, inundating a 20-block lowland area of the city of 8,732 population.

Homes Damaged
About 75 homes in the area suffered water damage but only 8 to 10 families moved out. The rest took refuge on second floors of their homes to wait out the flood.

The storied stream was expected to crest at Mount Carmel at 25 feet today. However, little further damage was predicted since most of the city is on high ground.

The heaviest flooding was on the Illinois side where an estimated 30,000 to 35,000 acres were awash with murky water.

Row Boats in Streets

The floodwaters covered an area reaching from St. Francisville, 15 miles north of here, to Grayville, 20 miles to the south. It stretched inland for about 14 miles to Johnson, Ind., directly across from Mount Carmel.

Rowboats appeared in flooded lowland streets in Mount Carmel to serve as taxis for flood-locked families.

The worst of the flooding appeared over in Indiana, which bore the brunt of the first flood onslaught. Downstream, levees at Vincennes held back the high water and there were no large towns along the banks of the Wabash below Vincennes.

Portland Smog Above Standards

Portland—UPI—The State Air Pollution authority reported Wednesday that Portland is suffering from smog, sometimes far exceeding allowable state standards.

The report was submitted to Mayor Terry D. Schrunk and Portland City commissioners who only a couple of weeks ago received a similar criticism from the state, hitting at the city's sewage contamination of the Willamette and Columbia rivers.

Wednesday's report on smog was based on a cooperative state and federal survey of Portland last October and on data collected by the state since 1952. The report declared that: "Expert medical opinion suggests that such pollution is a primary cause of lung cancer and may also have other detrimental effects on health."

The Authority reported that concentration of smog gases last October was above levels that caused visibility reduction, vegetation damage and corrosion, and was approaching a level where eye irritation might be expected.

The report added that Portland is one of only two cities of more than 400,000 population in the United States without a fulltime pollution control program.

Bridges Promises East German Ties

Berlin—UPI—U.S. labor union leader Harry Bridges visited East Berlin Wednesday and promised closer ties between his West Coast longshoreman's union and the East German Trade Union Federation, the East German ADN news agency reported today.

It said Bridges, who arrived here following a visit to Russia, would increase exchange of delegations and letters with the Communist union.

SHIP FEARED SUNK

Reykjavik, Iceland — UPI — The lighthouse service vessel Hermodur was missing and feared sunk off southwest Iceland today with 12 men aboard. Authorities said the 200-ton vessel foundered in a storm Wednesday.

One of the earliest lighthouses was the famous Pharos at Alexandria, Egypt.

DAILY'S

Body & Paint

Southern Oregon's
Oldest and Finest

29 S. BARTLETT

Phone
SP 2-2395



This Week
FOOD
BASKET
Is Featuring ...

Red Radishes — and — Green Onions

3 Large Bunches 10^c

- | | | |
|---------------|--|------------------------|
| Carrots | Golden Beauties 1-lb. Cello Bags | 2 FOR 19 ^c |
| Grapefruit | Large Texas Pink Dozen | 69 ^c |
| Broccoli | Large Tight Budded Heads — Each | 19 ^c |
| Potatoes | Klamath Russet U.S. No. 1 Fancy Size | 10 LBS 39 ^c |
| Squash | Your Choice of Banana, Hubbard Clean, Ready to Bake | 7 ^c |
| Onions | Yellow U.S. No. 1's | 3 LBS 25 ^c |
| Apples | Large Size Delicious A Real Bargain! | 3 LBS 29 ^c |
| Apples | Fancy Winesaps Save on These | 4 lb. 39 ^c |
| Celery Hearts | Snoboy Extra Fancy 2 in Bag | 29 ^c |

Food Basket Produce is always Fresh! and Always Priced Right! We have one of the largest varieties of fresh produce in Southern Oregon. Come in and shop Food Basket's produce department. It is the finest of its kind anywhere. Yes, we are really proud of our produce!

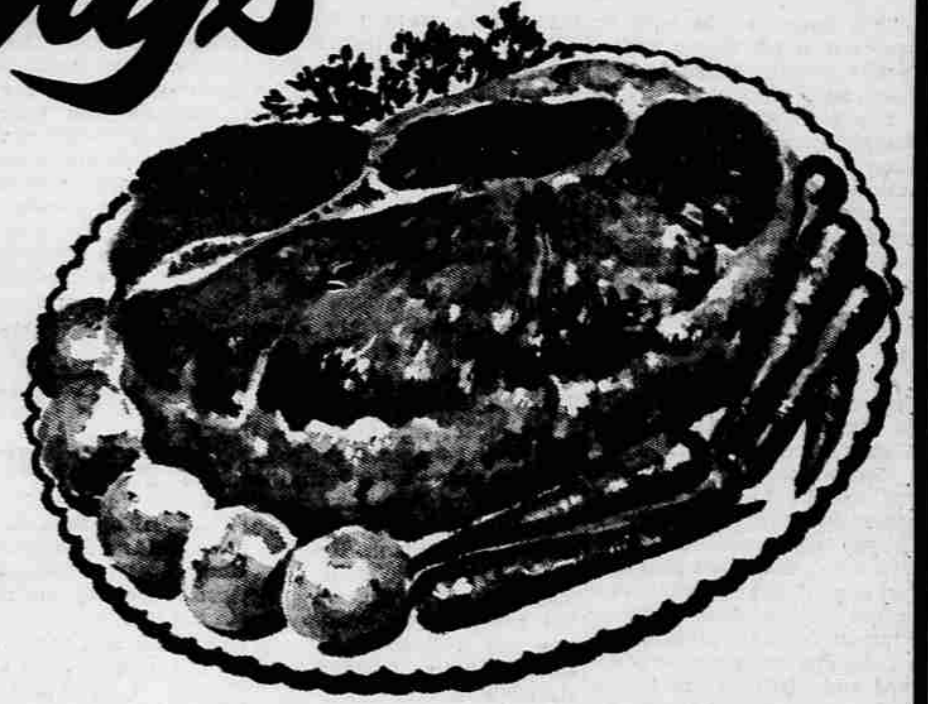
Super Savings

FRESH Meats COUNTRY FRESH Vegetables

All grocery stores sell groceries: the big difference in stores is in the "extra" you get. Two of our outstanding extras are Meats and Produce . . . the freshest, best quality that the market provides. And priced to you as low as possible! Try Food Basket's fresh produce and service meats . . . there is a difference!

Get Your FREE Tickets Now!
**WIN THIS
FREE 1959 FORD**
To Be Given Away Feb. 26
by Food Basket and
Fortune Stations
Nothing to Buy!

NEW! NALLEY'S
**Lima Beans
and Ham**
Get Free Sample Saturday 10 to 3
24-oz. tin
45^c



You Get Only U.S.D.A. "GOOD" and "CHOICE" Meats at Food Basket's Meat Department!

Beef Roast

Blade Cut
Well-Trimmed **59^c** lb.

Delight your family this week end

Pork Steak

Lean Eastern Pork **47^c** lb.

Yorkshire Brand **BACON**
THICK SLICED **2 LBS 95^c**

Ground Beef

Fresh Ground **49^c** lb.

Pork Roast

Shoulder Semi-boneless Eastern Pork **43^c** lb.

Save at Food Basket on These Grocery Specials

- | | | |
|-----------------|---|------------------------|
| Stockton Catsup | Made from Full-Flavored Tomatoes 12-oz. Bottle | 10 ^c |
| Vet's Dog Food | Full 10% Protein 1-lb. Tins | 15 ^c OR \$1 |
| AA Large Eggs | Strictly Fresh! Dozen | 49 ^c |
| Tomato Soup | Flavorful Campbell's 10 1/2-oz. Tin | 10 ^c |

To Arrive Friday
Save! Swift's
Brookfield BUTTER
Guaranteed the Finest!
65^c lb.

- RENUZIT'S AEROSOL
- | | |
|---|-----------------------|
| Air Deodorant | 49 ^c |
| M.D. POWDER ROOM Toilet Tissue.. 4 roll pk. | 45 ^c |
| Fab 12c Off Pack giant size | 75 ^c |
| 22-OZ. VEL LIQUID Detergent | 67 ^c |
| GIANT BOX VEL Detergent | 85 ^c |
| REGULAR SIZE Ajax Cleanser | 2 for 35 ^c |
| REG. SIZE FLORIENT HOUSEHOLD Deodorant | 89 ^c |
| Palmolive Bars. 2 reg. size | 23 ^c |
| Cashmere Bars. 2 reg. size | 23 ^c |

Food Basket Gives You Lower Prices Plus More Service

- | | | |
|----------------------|--|-----------------|
| Ice Cream | Local Made Snider's All Flavors — 1/2 Gal. | 79 ^c |
| Liquid Starch | Vano — All Purpose Full 1/2 Gal. | 45 ^c |
| Seedless Raisins | Dessert Brand 2-lb. Bag | 59 ^c |
| Baby Foods | Gerber's Chopped All Varieties Except Meat — Tin | 10 ^c |
| Angel Cake Mix | Betty Crocker White-Pkg. | 45 ^c |
| N.B.C. RITZ CRACKERS | 12-oz. Pkg. | 25 ^c |

PHONE SP 3-4050
FOOD BASKET
THE FINEST FOODS
LOWEST PRICES
The HOME OF PERSONAL SERVICE!!
CENTRAL at 13th
Open 9 a.m. to 9 p.m. Mon. Thru Sat.
Sundays—10 a.m. to 7 p.m.