

### Lenten Period Time of Serious, Painful Thinking

Editor's note: This is one of a series of Lenten messages written by leading American clergymen.

By DR. ROBERT E. VAN DEUSEN  
National Lutheran Council  
Written for UPI

The 40 weekdays preceding Easter are a time of serious and painful thinking, when we try to understand more deeply the sufferings of Christ.

How should Lent be observed? By giving up candy, or cigarettes, or movies? I shrink from the comparison of such trivial self-denial with the deep suffering in the heart of Christ which was the price of our redemption.

Jesus said, "if any man will come after Me, let him deny himself, and take up his CROSS, and follow me."  
**Real Self-Denial**

The real self-denial to which Lent calls us is the giving up of secretly cherished sins, the yielding of old hatred and resentment to the power of love, the handing over of our stubborn wills to the Christ who has invited us to follow Him.

Lent is not a solemn parenthesis of penitence, preceded and followed by a life of eager self-seeking. It is rather a breathing spell when we stop to adjust our compasses to be sure our living and the rest of the year is in the right direction.

It means being quiet enough that we can hear what God is trying to say to us.

### Italians Lead in Bridge Tournament

New York—UPI—The Italian championship teams held the lead today over the U.S. and Argentine teams in the international team-of-four contract bridge tournament.

The Italians, previously outplayed by the Americans, made a brilliant comeback Wednesday by drubbing the U.S. team by a score of 41 to 7 international match points.

A match point is roughly equivalent to 100 points at rubber bridge. Italy's hopes of winning the world title for the third successive year appeared bright. The Italian team led the Americans 122 to 110 after 84 of the scheduled 156 hands were played. The tournament, now in its sixth day, ends Saturday.

### Up To Parents To Censor TV Shows

Los Angeles—UPI—Robert Sarnoff, chairman of the board of NBC-TV, says it is up to parents to keep their children from watching television shows they find objectionable.

"I don't know that there is too much crime or violence on TV," Sarnoff said Wednesday.

"Parents have an obligation to keep their children from watching certain TV shows, if in their estimation they're not good for the youngsters," he said.

The ship elevator on the Hohenzollern Canal between Berlin and the Oder River can take vessels 118 feet up or down in five minutes.



You're at your best anywhere you go!

Turn to Sonotone's latest eyeglass hearing aid for good looks, smooth hearing. Slim-trim temples for both men and women. Only eyeglass hearing aid with exclusive AVC (Automatic Volume Control) to soften sudden, loud noises for your listening pleasure. Also latest "Tuck-A-Way" styles for those who don't wear glasses.

COME IN, SEE AND HEAR  
**SONOTONE**  
C. R. ADAMSON  
Manager  
839 East Jackson  
Phone SP 2-5904

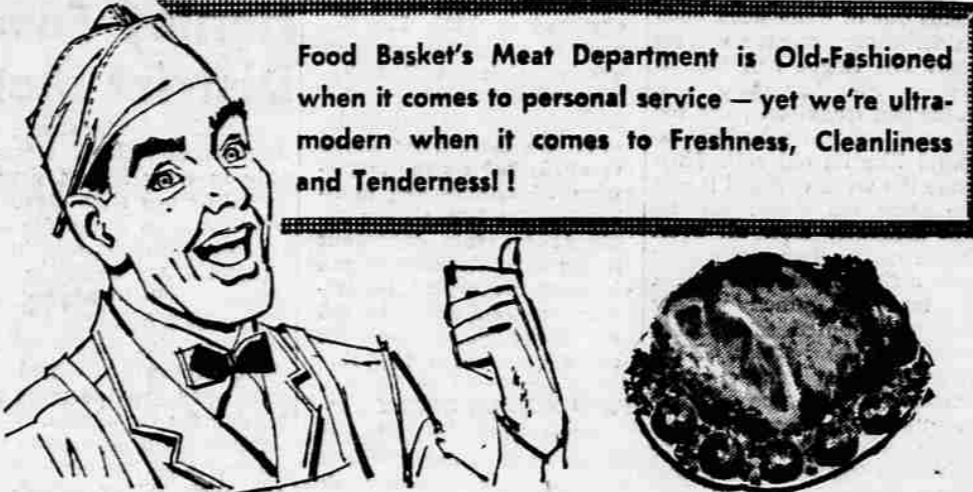


Food Basket Invites You to ...

# CELEBRATE WITH US OREGONS CENTENNIAL

100 YEARS  
OF  
PROGRESS

Although Food Basket cannot match Oregon's 100 years, we still have a few old-fashioned ideas about service and prices. And we're going to celebrate the Centennial with some real old-time favorites at old-time prices. Shop your independent-owned businesses. Help keep Oregon strong and growing by keeping Oregon dollars in Oregon!



Food Basket's Meat Department is Old-Fashioned when it comes to personal service — yet we're ultra-modern when it comes to Freshness, Cleanliness and Tenderness!

Swift Premium Fully Cooked

**Picnics** 39¢ lb.  
**Fryers** We'll cut them for you 37¢ lb.  
**Crabs** OCEAN FRESH Just for you 29¢ lb.  
**Ground Beef** the Best in town 49¢ lb.

### Feature Kraft Cheese in Your Lenten Menus!

Try FREE Sample when You Shop Our Meat Dept. This Week-end

**Aged New York Cheddar** 69¢ lb.  
**Mild Cheddar Cheese** 49¢ lb.  
**Longhorn Cheese** 59¢ lb.  
**Monterey Jack Cheese** 49¢ lb.  
**Danish Caraway Cheese** 59¢ lb.  
**Chantelle Cheese** 89¢ lb.  
**Kraft's Swiss Cheese** 89¢ lb.

KRAFT Italian Style

**Spaghetti Dinners** 2 FOR 49¢



**Kraft Dinners** 2 FOR 33¢

**Velveeta Cheese** Kraft's American Cheese Food 2 lb. loaf 73¢

**Cheese** Kraft's Sliced American or Pimento — 8-oz. pkg. 33¢

**Cheese Whiz** Kraft 8-oz. jar 29¢

**Cheese** Kraft — All Varieties in 5-oz. jars 23¢



**Simple Simon Pies**  
9-inch Boysenberry, Cherry, Peach 59¢ ea

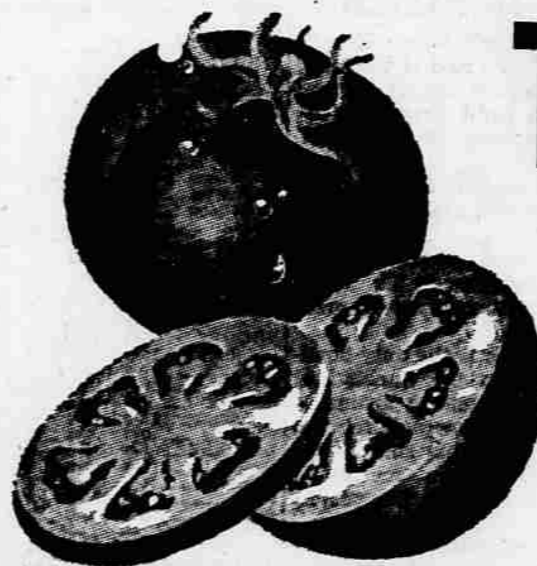
**CAKE MIX** Betty Crocker—8 Varieties to choose from 5 PKGS \$1  
**MJB COFFEE** 2-lb. tin . . 1.47 74¢ lb  
4-lb. tin . . 2.93  
**FLOUR** Gold Medal — with coupon on page 3A, Sec. 2 25 Lb. Bag \$1.88  
**COFFEE** Folger's New Instant 6-oz. jar 89¢  
**Bisquick Cereals** All Purpose Kitchen Favorite Giant 40-oz. pkg. 3 PKGS \$1  
Betty Crocker's Jets, Cheerios, Trix, Wheaties, Kix or Cocoa Puffs. YOUR CHOICE — REG. SIZE PKG. 4 PKGS \$1

LAST WEEK'S CANNED GOODS SALE PRICES STILL IN EFFECT!

### CENTENNIAL BEAN SALE

SACK 'EM YOURSELF! YOUR CHOICE — PINTOS, SMALL WHITES, REDS, LARGE WHITES, RED MEXICAN OR BABY LIMAS. 2 lbs. 25¢

FOOD BASKET TOP O' THE CROP PRODUCE



**Tomatoes** Large vine-ripe Slicing 19¢ lb.

SALAD VEGETABLES

- Romaine
- Endive
- Red Leaf

2 lbs. 27¢

**Avocados** 70 size Fuertes 5 for 39¢

**Spuds** U.S. No. 1 Klamath Sandland Russels 10-lb. bag 39¢

**Oranges** Large, Sweet Navels 1/2 box \$1.89

All grocery prices good thru Sunday. Meats and produce thru Saturday. We reserve the right to limit.

### M.J.B RICE SPECIAL

**LONG GRAIN** 28-oz. pkg. 28-oz. pkg.  
**QUICK WHITE** 24-oz. pkg.  
**QUICK BROWN** 28-oz. pkg.

YOUR CHOICE 3 PKGS \$1

**Sunshine HI HO CRACKERS**

1-lb. pkg. 33¢

**ALL JELLO PUDDINGS** Except Chiffon Your Choice

11 Pkgs. \$1

New sweet chilled **PARKAY MARGARINE**



5 LBS \$1

WIN A FREE FORD

1959 Ford to be given away by Food Basket and Fortune Stations!

**DRAWING** February 26

Get Free Tickets at Food Basket Now!

PHONE SP 3-4050

## FOOD BASKET

THE FINEST FOODS  
LOWEST PRICES



the HOME OF PERSONAL SERVICE!!

CENTRAL at 13th

Open 9 a.m. to 9 p.m. Mon. Thru Sat.  
Sundays—10 a.m. to 7 p.m.