

Hatfield Charged With Misleading Campaign Pledge

Salem—(UPI)—Rep. Keith Skelton (D-Eugene) charged today that Gov. Mark Hatfield had misled the public with pledges of reduced taxes and increased services "without investigating the feasibility of either."

Skelton, co-chairman of the Joint Ways and Means Committee, revealed correspondence with the State Tax Commission.

Skelton said many new starts involving expenditure of state money were suggested by Hatfield in his inaugural address. He said he asked the State Finance Department to give him an estimate of what these programs would cost and was told it would take some time to find out.

Wanted To Allow Time
"Although this answer was itself a confession that when Hatfield made his campaign promises he had no idea of what amount of money was involved," Skelton said, "I waited for some time before making this public. I wanted his departments to have the opportunity to compile figures, if the facts were actually known."

Skelton continued: "It becomes more evident daily that these facts are not known now and they were not known when Hatfield made his promise to the people of this state. The Ways and Means Committee faces a 'great problem,' Skelton said, because of Hatfield's 'vagueness.' Hatfield has previously stated he intends to come out with a budget program about Feb. 15."

Winter Term Adult Classes Scheduled

Registration for winter term adult education classes sponsored by the Medford public schools will be held at Medford High school Monday through Thursday evenings, Feb. 2 through 5, according to Lindsay Vinsel, director of adult education at the school. Hours will be between 5 and 8:30 p.m. those dates, Vinsel said.

Among adult education classes offered during the winter term are a Centennial history of the Rogue valley, vocabulary building, mathematics, painting classes, and other courses.

Additional information may be obtained from the adult education office at Medford High school at SPring 3-5341.

Daylight Saving Bill Introduced

Salem—(UPI)—Republican Reps. Shirley Field, Portland, and Monte Montgomery, Eugene, have introduced a daylight saving time measure which would be referred to the people in November, 1960.

Their referral measure would provide that daylight saving time start on the last Sunday of April and end on the last Sunday of September. Daylight saving or standard time measures have been on Oregon's ballot three times since 1950.

A uniform standard time bill passed in 1950. In 1952 a standard time initiative passed nearly two to one. And in 1954 a daylight time bill was defeated.

Thor Production Going Full Blast

Sacramento, Calif.—(UPI)—Douglas Aircraft and the Air Force left no doubt today that an industry-military team is going full blast on the production line with the mighty, city-busting Thor ballistic missile.

"The Thor is now a truly operational weapon," Donald Douglas Jr., company president, told newsmen seeing for the first time the final inspection stage of the huge intermediate range missile on the remote flatlands east of here. In a simulated count-down late Wednesday, one of the 50-ton, 65-foot long monsters was in vertical launch readiness in 15 minutes and 10 seconds from its static position beneath a rolling shelter.

ACTRESS RECOVERING
New York—(UPI)—Blonde actress Roxanne Arlen, 23, was in Bellevue hospital today recovering from an overdose of sleeping pills. She was reported in good condition.

MADE IN THE U.S.
Washington—(UPI)—The Foreign Agricultural Service estimates that the U.S. livestock industry supplies 95 per cent of the tallow from which Japanese soap is made.

SAVE! Thank You Sale

IT'S FOOD BASKET EMPLOYEE'S BIG

Your friends and neighbors — employees at Medford's new Food Basket have chosen these much-wanted specials just for you. It's their way of saying "Thank You" for the wonderful way you have welcomed lower food prices to Medford!

Shop these "Thank you Specials" this weekend. They're even lower than Food Basket's regular low prices.

Come in! Meet your friends and neighbors! Save on these red hot Food Basket Employee's "Thank You" specials!



JERRY BRADFORD
Food Basket Manager

Margarine Columbia Colored
Packaged by Delrich **8 lbs. \$1**

Instant Coffee New Folger's
6-oz. jar **85¢**



Ed Chesney
wants a real bargain, so here goes . . .

More Food Basket Employee's Special!

Swift's Luncheon Meat

Prem 12-oz. tin **39¢**

Jerry has these red hot buys for you . . .

Everybody's Favorite Salad Dressing
Miracle Whip qt. **39¢**

Ivory Bars 10 bars **\$1.00**
A Real Buy—Medium Size

All Grocery Prices Effective Thru Sunday. Meats and Produce Thru Saturday.

New Giant Size ZEE WAX PAPER

Full 200 Ft. Roll **35¢**

Reg. Size Diamond BOOK MATCHES 50 to a Pkg.

225¢



Dick Souza says, "I like Folger's, so let's give 'em a real coffee buy"

FOLGER'S COFFEE

Drip or Reg. Grind **77¢** lb

WE RESERVE THE RIGHT TO LIMIT

Marge says, "You can't sniff at this bargain"

Kleenex Ass' Colors 400 Count Box **23¢**



Marge Hanson likes to sell these cause they're so good!

BIRDS EYE Frozen Pot Roast or Turkey

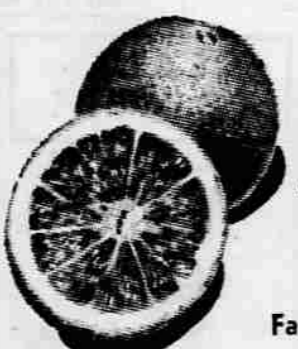
DINNERS Reg. 73¢ **49¢**

Food Basket is always glad to cash your Paycheck!

Johnny Davis says, "You'll love the freshness of Food Basket's Top o' the Crop Produce"



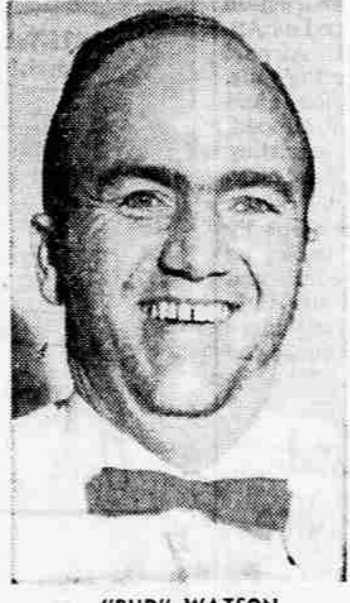
These are the large, sweet Navel Oranges you have been waiting for!



ORANGES Large Fancy Choice **12¢** lb.
1/2 box 16 to 18 lbs. **\$1.89**



ROY WATSON
Meat Dept. Manager



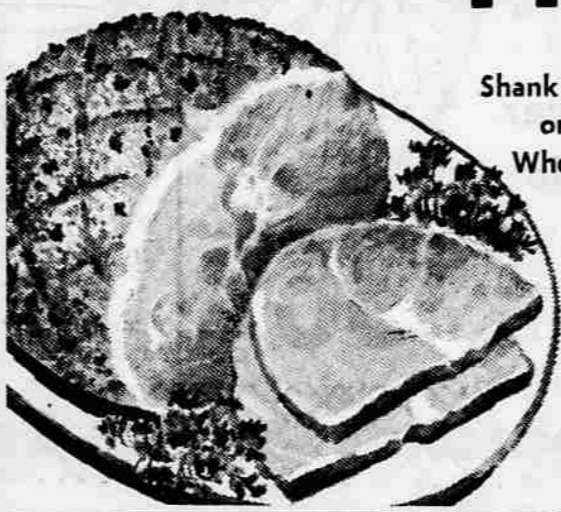
"BUD" WATSON

Roy Watson and "Bud" Watson remind you—"We're always here to serve you with U.S. 'Good' and 'Choice' Meats!

Bacon Sweet Rasher **49¢** lb

Pork Liver Fresh Sliced **29¢** lb

Red Snapper Fresh Fillet **37¢** lb



Shank Half or Whole

HAM **55¢** lb

Hugh Messer tried one and says, "It's the most!"

Hi-C Pineapple Grapefruit DRINK

46-oz. Tin with coupon on Page 3, 2nd Section **13¢**



Hugh says, "You'll like Food Basket's personal service!"

Pop Corn 3-Minute White or Yellow 2-lb. pkg. **33¢**

Clorox 1/2 gal. Bleach So-a-a gentle **57¢**

CENTENNIAL BEAN SALE

Small Whites Reds Pinto's, Large Whites Sack 'em yourself and save!

225¢ L B S

Proctor & Gamble Products

- Medium Ivory 3/32c
- Personal Ivory 4/29c
- Ivory Flakes, large pkg. 37c
- Ivory Snow, large pkg. 37c
- Zest, bath size 2/43c
- Dreft, large size 37c
- New Ivory Liquid Detergent, 22-oz. 79c
- Cheer, reg. size 37c
- Lava Soap, reg. size 2/25c
- Lava Soap, large size 2/33c

ASK THE CHECKERS FOR FREE TICKETS ON 1959 FORD TO BE GIVEN AWAY FEBRUARY 26TH

Open 9 to 9 Week-days, Sundays 10 a.m. to 7 p.m.

FOOD BASKET

THE FINEST FOODS LOWEST PRICES

13th and Central

THE HOME OF PERSONAL SERVICE!!

Phone SP 3-4050