

Grange Co-op Completes New Bulk Feed Handling System

Central Point—The Grange Co-op in Central Point completed recently a bulk feed handling system at its manufacturing plant in Central Point. The system permits the handling of feed products from the grower to the finished product in the farmer's own storage, entirely by bulk methods.

The system was built and installed by the Medford Blow Pipe company, Trowbridge and Flynn did the electrical work. Additional storage of 200 tons was a part of the system. Total cost was over \$25,000.

This installation provides handling bulk materials either from trucks or rail cars for fast unloading into any one of 35 bins. One of the features of this receiving system is the use of a 25 h.p. combination vacuum and high pressure air system. This unit can be used in receiving of raw grains and has a capacity of 8-10 tons per hour depending on the variety of product. The air system is very adaptable, for by the use of flexible tubing it is possible to handle materials from any point in the plant.

dust at the delivery point. Two factors are involved in this problem. One is the greater time from manufacturing to delivery the more the feed can dry out. Some methods of handling and delivery through other systems result in considerable dusting.

Reduces Dusty Feeds
The Grange Co-op's installation was devised to reduce the possibility of dusty feeds. Products are handled by conveyor methods during and after manufacturing and delivering. This keeps dusting at a minimum. Feeds manufacturing is on a daily schedule so that they are always delivered freshly made.

Soil Drainage Lecture Subject
Approximately 53 persons attended the first session of the soils short course Saturday in the Jackson county courthouse auditorium, the county extension agents' office reported.

in progress includes installation of a hoist for unloading bulk grains from farm trucks. By this method the truck is picked up at the front end and the grain is spilled out from the rear of the feed into a receiving pit for elevation into bulk bins.

Annual Meet Set For 4-H Club Leaders in State

Corvallis - Oregon 4-H club leaders will suggest project improvements and plan activities for Oregon's 31,000 4-H club members at the annual leaders conference Jan. 21 to 23 at Oregon State college.

Special Feature Planned
A special feature will be the planning of a Centennial pageant to be presented by 4-H club members at the 1959 4-H Summer School.

Farm & Garden --- CHIT CHAT ---

By JOE COWLEY
Mail Tribune Farm Editor

The beef industry in Jackson county seems off to a good start this year. With their eyes on national trends cattlemen expect the 1958 calf crop and bigger and better feeder sales in the valley what with a steady west coast summer market expected in fed cattle.

Also, the Jackson County Stockmen's association seems off to a "rapid rabbit" start with a good organization set up for the new year. A number of standing committees are established and include - public lands use, Bruce Grieve, chairman; membership and finance, Bud Jess, chairman; marketing and beef promotion, Ernie Lathrop, chairman; sanitation and disease control, Wallace Ragsdale, chairman; brand and theft, Jim Miller, chairman; legislative and taxation, Ben Day, chairman.

Armin Richtner, new association president, emphasizes they will be active committees with definite projects. When Armin says active we know they will be jet-propelled. Armin as a cattleman has been insisting more government range land can be used by clearing the brush and by following careful grazing practices. This committee should see a lot of progress and is expected to organize a strenuous fight against the wilderness preservation bill.

Armin seems to be fostering the growing interest in beef promotion, also. Representing this county on the state level is Floyd Baker, Jackson county representative on Beef, Inc. He is working on the beef industry's role in the Oregon Centennial celebration. Naturally consumption of beef will be promoted along with the Centennial. The new stockmen's head has insisted that the beef industry be run like a business or industry so will be pushing the local association's activities from that angle.

The Western Livestock Journal notes that "last year saw use of more meat promotional material than any year in history." It noted also that 1959 should be even more successful. Not to cast a cynical note, but we still think beef promotion is in the feeble stages; particularly compared to other phases of agriculture such as wheat and the broiler sections.

It didn't take those raising the chickens for frying long to organize into a commodity commission and beef men have yet to do so. The wheat industry is pushing foreign consumption of wheat such as in Japan.

Currently the fryer people are pushing a labeling bill to be presented the state legislature. This would require labelling of all fryers with the place of origin. We would like to see labels on packages of beef products saying "raised on Oregon grass and fed Oregon grain." The broiler industry reports that the labeling bill has already been reviewed from the legal angle by the state department. The fryer industry is now urging all its members to be present when the agriculture committee presents it for public hearings.

Right now, I would like to say that it isn't the amount of money spent on promotion but how effectively it is spent. Is the public really conscious of your product? This is Centennial year. The pioneers of 100 years ago ate lots of beef since they brought it right along with them with their wagon trains. A promotional campaign based on the rugged pioneers who ate beef might help.

Getting back to the Jackson County Stockmen's association - "It is the intent of the present administration and membership committee to continue their drive to build membership in the county to 200 or better," Armin Richtner, association president, stated. Under the new arrangement with the Oregon Cattlemen's association annual dues cover both the OCA and the local association. The fee is \$5 a year plus 5 cents per head of adult stock.

Jim Miller, Ashland cattleman, talked during last week's executive session on phases of branding and the theft problem in the cattle industry as it affects Jackson county and the state as a whole. Miller as chairman of the brand and theft committee plans to meet with the brand inspectors and discuss ideas and recommendations and changes in legislation.

Probably working with Miller and his committee on anti-theft legislation will be Ben Day, chairman of the legislative and taxation committee. Wallace Ragsdale heads up the sanitation and disease control committee which is facing an important struggle. Bud Jess is chairman of the membership and finance committee.

The stockmen's association board of directors also approved holding a board meeting the third Thursday of every month at 8 p.m. This practice will be continued until summer ranching prevents it or due to lack of urgent items requiring discussion and action, Richter reported.

Lathrop as chairman of the marketing and beef promotion program will be working also with Bill Bray of Midway auction yard to improve all feeder sales. Definite ideas will be presented association members on both promoting the sale and facilitating the handling of cattle, Richter said. Bray told those attending the annual stockmen's meeting that the sale is steadily growing and he is swamped with cattle at almost the last minute. Planning and consigning ahead would help eliminate the jam, he said.

According to the general news Oregon is celebrating its founding as a state while Hawaii is trying to become one. Ex-Governor Holmes tried to build and strengthen commercial ties with Alaska, the new state in the union. Apparently at least one Jackson county person is already carrying on commerce with Hawaii.

Mrs. Dora Dorich, route 1, box 489, Medford, received a letter from Honolulu, Hawaii, dated Dec. 1 thanking her for the boars she had shipped to a Mr. S. Kamimoto by way of the Good Deal market in Honolulu. The hog was of the Landrace breed and was about three-months-old and weighed 110 pounds each. They were shipped by boat from Portland.

Mrs. Dorich has approximately 60 brood sows and a total of 300 head on the ranch located on the Jacksonville-Central Point highway. Apparently Kazuo Kikuta of the branch office of a national feed company was pleased with the hogs as was the man who bought them.

The letter reads - "He certainly was satisfied with them and intimated that he wouldn't mind contacting you further as to the future availability of such fine animals. They arrived in excellent condition. We thank you for your genuine interest in making these blood lines available to us. We also thank Lee Clark (feed company field man) for working so closely with you."

Those of you who have visited the islands will remember how much Hawaiians enjoyed good pork. If you were adventurous enough you travelled to some of out of the way islands and may have been welcomed with a traditional feast featuring roast pig.

Trees, too, are a crop and can be raised on a farm the same as any other agricultural product. The popularity of growing Christmas trees for the ever expanding market seems to be growing in this county. In Jackson county during the 1958 season 65 permits were issued for cutting, representing a harvest of 43,000 trees. This compares to the 1957 total of 63 permits for 39,000 trees.

Marketing Facts To Be Explained To Nurserymen

Corvallis - Marketing and management research findings and recommendations will highlight the program for the third annual Oregon State college short course for florists, nurserymen, bulb growers, holly orchardists, and landscape gardeners, Feb. 3 and 4.

More than 250 growers and handlers of ornamental crops are expected to attend. General assembly meetings are planned each morning and sectional meetings in the afternoon.

The general assembly meeting on marketing will include a report of a survey on how home owners buy trees, shrubs and garden supplies. The survey, made by Melvin J. Conklin, Oregon State college agricultural economist, will give growers and handlers an insight into current buying habits and trends.

Store Design Topics
Design of a garden center, or store, for efficient operation will be discussed by Ernest Wertheim, San Francisco nursery planning consultant and landscape architect, and marketing functions and the economic outlook will be reviewed by G. Burton Wood, head of agricultural economics at OSC.

A report on container growing of nursery stock, which is gaining popularity in garden stores across the country, is slated by two University of California scientists, K. F. Baker and O. A. Matkin. Ornamental and nursery crop registration plans at the new Northern Willamette Valley branch experiment station, near Aurora, will be outlined by R. M. Bullock, superintendent.

Sectional meetings will review weed, disease and insect control recommendations along with discussion of other production problems.

A. N. Roberts of the horticulture department is general chairman for the short course. Registration fee is \$3 per person.

The combined value of Oregon's ornamental crops is estimated at more than \$10 million annually.

Time For Pruning Now, County Agent Suggests

This is the time to prune, suggested Clifford B. Cordy, county horticultural agent.

Heavily spurred limbs should be pruned heavily, he directed. Diseased areas particularly should be cut out. This applies to sections infected with blight in pear and apple trees, he added. Those requiring more specific information can obtain a pamphlet on pruning at the county agent's office in the courthouse.

Pruning should be confined to removal of limbs from areas where the tree is too dense. Heavy remove limbs heavy with old spurs but very little new growth. Next cut the interfering limbs, Cordy directed.

Practically all water sprouts in the center and top of the tree should be removed. Some should be left throughout the tree to serve as fruiting wood later.

The apple tree can get along with very little or no pruning for years. If the size and quality are satisfactory there is little to be gained by pruning, Cordy said.

If the trees are old they are probably too high. Then perhaps the higher limbs should be removed, the horticultural agent said. If uprights are growing from large, nearly flat limbs they should be cut completely. If the main limbs are upright growing, cut them back to a lateral. If a lot of wood is removed in this manner, leave the remainder of the tree unpruned for another year.

It is better to take two or three years to get a tree in shape than to try to do it all in one year, Cordy advised.

Do not remove short shoots and spurs in young trees, the county agent warned. These produce the first apples.

Pruning should be done on rose bushes to produce finer blossoms on longer stems. The amount you prune roses will be governed by whether you want a few excellent roses for cutting, a mass of flowers for

Oregon Grain Moves Said Heavy

Salem - More than nine million bushels of incoming grain were moved through state department of agriculture grain inspection during December, according to T. Ralph Harry, division chief, Portland.

Inspection of incoming grain by types and respective amounts in bushels were: wheat, 4,232,407; barley, 3,266,509; oats, 117,554; corn, 136,307; and milo, 1,943,000. The wheat receipts carried 3.5 per cent fowl dockage.

Export shipments of wheat inspected totaled 2,192,632 bushels while barley tallied 3,283,891 bushels. Export of safflower seed totaled 3,362,240 pounds.

Certified weights (in pounds) issued: safflower seed, 2,019,160; grass, 136,079; cottonseed, 44,745; soybean meal, 1,361,704; alfalfa meal, 561,640; copper, 82,337; aluminum, 179,387; beet pulp, 298,290; millrun, 652,475; and screenings, 242,680.

Almost 3,000 cars of grain were sampled in railroad yards, and 1,160 protein determinations made, Harry said.

meter and are of U.S. No. 2 or better quality.

Diverted Spuds Give Big Return

Salem - One-third of the potatoes produced in Oregon went into the government's diversion program during 1958, the November report of the state department of agriculture's marketing specialist shows.

A total of 64 per cent of the potatoes submitted for diversion were accepted according to W. L. Close, federal state supervisor of shipping point inspection who noted that the "percentage of specification A (No. 2's) for the month of November is down over the previous month. This reflects the diversion factor in that the diversion of entire fields of field-run is now out of the picture."

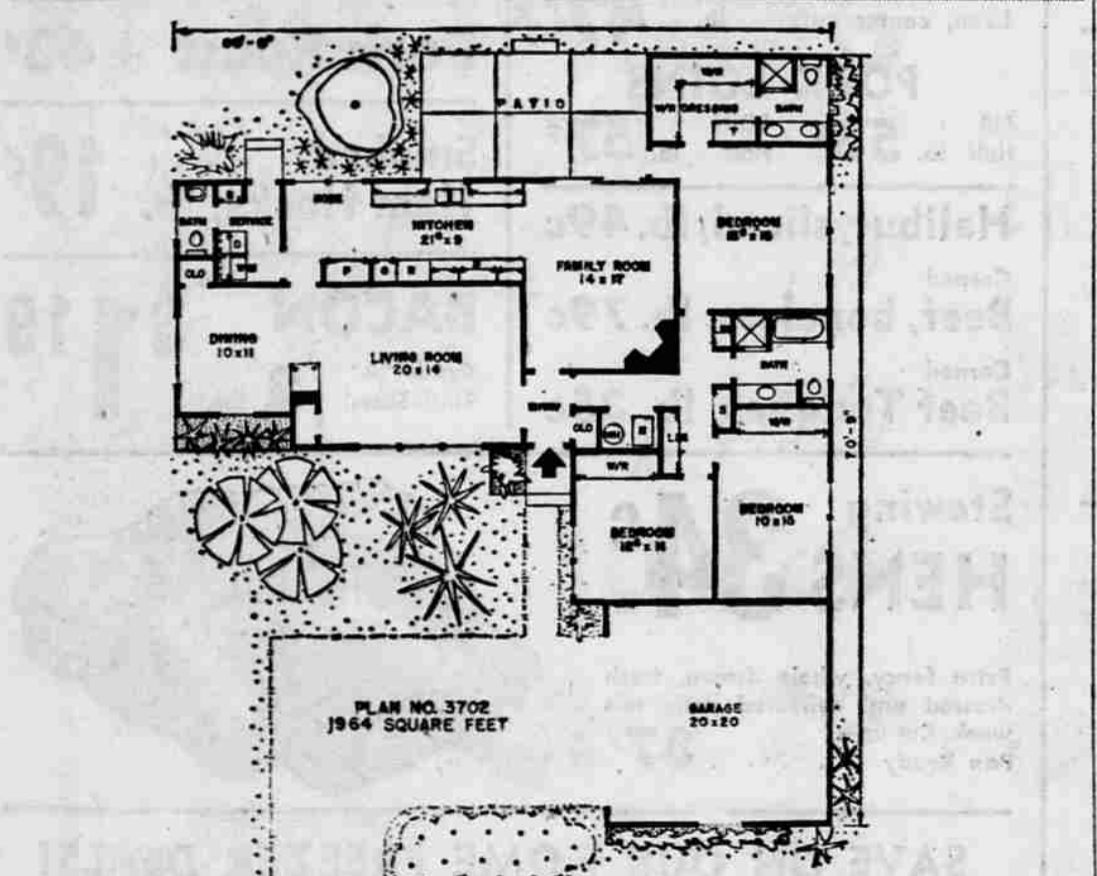
From the Ontario district, 31,214 cwt. were reported with 26,556 being of a specification resulting in \$13,278 in cash to diverters. For Redmond, 235,719 cwt., 126,604 cwt., specification A, with \$63,320 in cash to diverters. Klamath Falls, 240,246 cwt., 132,179, specification A, and \$66,089.50 in cash to diverters.

The total for Oregon in November amounted to 507,179 cwt., or 1,409 cars; specification A, 285,339 cwt., or 793 cars (56 per cent) for a total cash to diverters of \$142,669.50.

Under the potato diversion program, the U.S. Department of Agriculture assists the industry to dispose of supplies in excess of market requirements.

Diverted potatoes are used for starch, feed, or flour. Any potatoes utilized for feed must be cut, chopped or sliced in order to qualify. Payments are made only for potatoes which are a minimum of two inches in dia-

This Week's Home for Living



By HIAWATHA ESTES
The different needs of different ages are the major consideration in this luxurious home. The work and activity areas occupy the greater portion of the floor space, yet the bedrooms are amply large.

The thought behind this is that while the youngsters are small the parents will spend most of their leisure time at home, relaxing and entertaining.

Light and cheerful, the big living room has an open fireplace that can be enjoyed equally well from the dining area. A large closet in one corner provides a place to store special table linens and dishes.

Grange Co-op CAN GIVE YOU BULK FEED ECONOMICALLY!

Faster Service
Wider Variety
Greater Supply

The recently completed bulk feed facilities enable us to offer feeders a complete line of animal and poultry feeds in the most economical way.

Everyone is welcome to purchase his requirements of petroleum products, steel products, liquid and dry fertilizers, garden supplies, and dustless feeds, bulk or sacked.

You are also invited to utilize our animal nutrition service.

Everyone is Invited to Inspect Our Plant

The BEST For Your Livestock!

GRANGE CO-OP SUPPLY ASSOCIATION

Central Point—Phone NO 4-1261 Ashland—Phone MU 5-4021