

# Farm and Garden

## Watering Important Growth Factor To Plants Being Raised Indoors

By J. VERNON MARSHALL  
For Rogue Valley Nurserymen and Growers and Oregon Association of Nurserymen.

Well, we can't garden too well outside now can we? So let's grow a few house plants.

General cause for the failure to successfully grow pot plants in the home is improper watering. Watering plants growing in pots requires careful attention. The plants are entirely dependent upon the homemaker for the right amount of water encourage a healthy growth. When out in the open the roots have a chance to go down into the soil and look for moisture if necessary. A tender annual

can be lifted and it can be observed that its hair-like roots have grown right into a hard-rock-like clay soil. The same plant in a four-inch pot has no chance to do so.

**Keep Soil Fairly Moist**

With most plants grown by the average homemaker it is just a matter of keeping the soil fairly moist at all times. Also, when applying the water the soil should be disturbed as little as possible. You can tell when a plant needs water by showing your fingers down into the soil. Appearance of the surface soil may be deceiving.

Don't water soil that is wet nor ever let a plant suffer in soil that is dry. Letting plants stand in dry soil even occasionally stunts their growth.

Plants which grow under glass in pots or a shallow bench with artificial watering are different from those in the open field. They can't stand a dry soil without showing bad effects. On the other hand, poor drainage and allowing the water to remain in the soil too long will produce some bad effects, also.

No plant loves water more than the Boston fern, for instance. As long as there is plenty of drainage in the pot it can stand watering practically every day. However, it will soon die in a sour soil resulting from improper drainage. This also applies to all other plants.

## Grange Co-op Man To Teach Course

Eagle Point - Keith Hockersmith, field man for the Grange Co-op, will be the leading instructor for the adult farmer class on livestock feeding and nutrition which will be held at the Eagle Point Vocational Agriculture building beginning today at 7:45 p.m.

A tuition fee will include refreshments and a supplemental outline for the class which will meet Thursday evenings for ten weeks.

Topics will include fundamentals of animal nutrition, use of feeding tables, roughages, pellets and wafers, feed additives, calf raising, pastures, parasites, and new equipment for best utilization of pastures, hay and silages.

Instructors will include Dr. Eugene Hanawalt, Central Point, veterinarian; Carl Jacobson, Medford, General Mills representative; County Agent Earle Jossy; Paul Wilson, Medford, of Albers Milling Co.; County Agent Gene Winters and Hockersmith.

Among flowering plants, geraniums are the gayest of house plants and are ideally suited to colonial furnishings. They do need a lot of sunlight and not too much heat. Close relatives are Gloxinias and African Violets and are for the window which does not receive direct sunlight.

Spring flowering bulbs such as tulips, daffodils, hyacinths make a glorious display indoors, but need more handling

## Beef Promotion Meeting Set

A meat promotion meeting sponsored by the Oregon Farm Bureau Federation will be held in the courthouse auditorium Thursday, Jan. 15, at 1 p.m.

All persons interested in meat production will be welcome. County Agent Earle Jossy reported.

The meeting, planned by Howard Fujii, commodity director of the Oregon Farm Bureau, is designed to inform livestock producers of the nationwide program of meat conducted by the National Livestock and Meat Board; to discuss means of expanding local meat promotion; and to discuss methods of making promotion programs more effective.

Richard J. Nolan, Denver, western representative for the National Livestock and Meat Board, will explain its research promotion and education program.

Representatives of Beef, Inc., statewide promotional group, and the Jackson County Cowbelles, will explain their programs.

Nine other meetings similar to the local one are planned in other Oregon districts, Jossy said.

# --- CHIT CHAT ---

By JOE COWLEY  
Mail Tribune Farm Editor

Two veteran farmers stood in the church vestibule earnestly talking last Sunday. It looked interesting so we tuned in and later joined in the conversation.

"Y' know a young feller just can't hardly get started in farming nowadays with the high cost of farm machinery and all," one farmer was saying.

"That's right! you just figure up all the machinery he's gonna need to run a farm, then total up the cost and you wonder how anybody gets started in farming these days," the other farmer agreed. "Yup, she's come a long way from the time that I borrowed a team and plow from m' dad, rented a place and started farming."

And we wondered right along with them. How can a young farmer-to-be start raising crops on his own? So, we asked a few questions around. A vocational agriculture instructor at one of the county high schools said this is the problem that has worried educators for some time.

However, it boils down to the old saw, "When there's a will there's a way." But there are possibilities. One popular means is to go into partnership with a farmer ready to retire. It takes a little longer, but other fellows work at another job either while farming or while saving up enough money to farm. And, of course, many jobs related to farming exist.

It used to be that vo-ag instructors aimed their instruction at getting the boy started in farming and training present farmers. Now, however, vo-ag teachers teach basic knowledge and skills which can be used in the general field of agriculture. Not long ago a vo-ag instructor told us there is a bigger demand than can be filled for young men who can fill jobs in fields related to farming.

Above all a boy with his eye on the future in agriculture - farmer or not - should GET ALL THE EDUCATION HE CAN. A banker told us, a teacher told us, a businessman-farmer told us, and an agriculture expert told us. Farming has become more of a science and business. And it must be run along those lines to be successful.

College graduates are needed for 15,000 new agricultural jobs each year, according to a booklet published by the American Association of Land-Grant Colleges and State Universities. What does education mean to you in dollars and cents? According to U. S. Census Bureau figures, eight years of schooling will produce a life income of \$116,000, four years of high school \$165,000, one to three years of college, \$190,000 and four or more years of college up to \$268,000.

There are many doors to the wide field of agriculture. General headings are research, industry, business, education, communications, conservation, services and farming and ranching.

Research alone has 12 classifications or job headings—production, marketing, economics, agricultural engineering, equipment and utilities, processing, new uses and methods, new products, by-products, conservation, reclamation and rural sociology.

There are several facets to industry such as machinery and equipment, food processing, grain and seed processing, meat and poultry packing, fertilizer and lime, pesticides and herbicides, feed manufacturing, dairy processing, fats and oils, textiles and fibers, buildings and utilities and forest products.

The business end of agriculture also known by the new name "agri-business" includes jobs under banking and credit, insurance, farm management, cooperative management, land appraisal, grading, packaging and labeling, marketing, storage and warehousing, transportation, farm utilities, custom services, and private businesses.

The field of communications in agriculture is a broad one also and includes farm reporting, newspapers, market reporting, publications, magazines, photography, motion pictures, radio, recording, television, advertising, exhibiting, and training.

Agricultural services are many and varied. They include such things as inspection and regulation, food and feed, seed and fertilizer, agricultural chemical, plant and animal quarantine, quality control and grading, organization and foundations, agricultural technicians, agricultural consultant, agricultural statisticians, veterinarians, and foreign agricultural service. — So much for how to get into agriculture.

You decide you want to farm. So, you go to the bank and hunch over in your chair while a loan department man asks you questions and has you fill out a long form. You're on the "hot seat" because you think he is really giving you a going over. And you're right, he is. He wants to know how much you know about farming, about your general background, credit record and whether you are a good moral risk.

Lending money has come a long way from the time a banker would merely lean back in his swivel chair, run his fingers down his watch chain, fix the prospective borrower with a piercing glance, ask a few sharp questions then refuse or grant the loan. Banks have a good record of successful lending to uphold. In fact, a local bank official tells us that bank net losses on loans are usually small.

"About 99 point something, are honest people, anyway. That's what keeps us in business. You can't outfigure or outguess the few crooks, anyway."

So you get the loan. Usual terms are one third down, half at the end of the first crop year and a second payment at the end of the second crop year. Much of the term arrangement depends on the farm machinery and implement companies and results in many variations of financing terms. Some arrange payments on a basis of three crop years, we learned.

Several loans are regularly made with the father signing for his son, but his son carrying the burden, a banker told us. To borrow money a man must be of legal age. However, 4-H and FFA loans are the exception. These are straight loans of \$200 to \$300 used for a steer or crop. The idea is to teach the youngster how to borrow money and pay it back.

"During the 15 to 20 years we have been making these loans we have lost only one," a local banker said. "That was when the old man ate the hog, so the boy didn't have anything with which to earn the money."

Two things to consider, we were told, are the borrower's angle and the lender's angle. How and when with any reasonable assurance can the loan be paid back. This, of course, bars acts of nature and any unforeseen events. A man must have "a little cushion" in case something goes wrong. Otherwise, by the law of averages he is going to get clobbered.

Like many other people the local banker also emphasizes the need for as much schooling as possible for the future farmer. Farming is as much a business as accounting and law, we were told.

A local banker cited a few statistics on people and businesses which all people in the money-lending business must keep tucked away in their craniums.

An average of 9.2 out of every 10 businesses fail. Out of 100 corporations one is left at the end of 10 years. Out of every 400 top employees one is a potential employer. (This includes self-employment.) The latter figures were developed over the last 10 to 20 years by people in the business of personnel and lending money. The other figures were developed by the National Association of Manufacturers on records kept over a 30-40 year span.

"Twenty-three years ago when I arrived in Medford I made a walk from the Medford hotel to Bear creek," a

## Rogue Valley Pears Go Into New Fruit Drink

A new product which features another use of the Rogue Valley's famous pears was announced at a recent meeting of the Medford Pear Shippers Association.

The product is a prepared fruit drink and combines the juice of pears and pineapples, according to Warren Bayliss, vice-president of the year industry group.

Bayliss reported that the fruit drink was introduced nationally under the Del Monte label, but he predicted that other companies would probably feature a similar product in the near future.

At least two vally supermarkets (The Big Y and The Groceria) have obtained amounts of the pear-pineapple drink, and others plan to order supplies based on consumer demand.

Initial public response to the product has been very good, Bayliss said. He noted that this new item, plus other product uses of pears, are important to the economy of the pear industry, since they tend to expand the domestic consumer market.

Product research by pear industry supported groups and by Oregon State college specialists will eventually point the way to full product usage, Bayliss said, but for the present the local industry must continue to develop its market for fresh pears and promote the use of canned pear products.

## Farm Records Course Topic

Central Point—A course on farm records will start at Crater High school beginning at 8 p.m., Monday, Jan. 12, according to Ed Griggs, vocational agriculture instructor.

The course sponsored by the vocational agriculture department will consist of a two-hour class each Monday night for 10 weeks.

Lecture subjects will cover various factors on farm record keeping such as the accrual method, the cash method, operational records and enterprise cost analysis.

Several classes will be devoted also to federal and state income taxes. One night will feature federal lending agencies on farm credit. The following week the class will cover commercial lending agencies. Farm insurance will be discussed also one evening and will consist of general farm insurance and liability insurance. County taxes will be discussed during another evening.

Registration fee is five dollars per family for the 10 weeks course, Griggs said. For more information and pre-registration contact the Crater high school vocational agriculture department by calling NOrmandy 4-1103.

## Cave Junction Man To Appear on Panel

Cave Junction — Robert Marten of Cave Junction was scheduled to appear on a panel of leading dairymen and agriculturists during the 65th annual meeting of the Oregon Dairymen's association yesterday and today at Gearhart, Ore.

The meetings at the Gearhart hotel will run the gamut of problems facing dairymen. Discussion will include recommended changes in agricultural laws slated for presentation at the next legislature, he said.

**ZOO PARADE**

New York—UP—Police were not too surprised when they found an eight-foot porpoise hanging from a lamppost on a Bronx corner one night. Earlier in the day, they had come across a nine-foot shark with its teeth removed on a nearby corner.

local banker said. "Now when I make the same walk I can count on the fingers of one hand the businesses along the same route which are still here. Of course, some business owners have died, others have sold out. Business and finance are as fluid as human-nature and human nature is very fluid," the local banker summed up.

Thing's ain't what they used to be. Particularly in the winter underwear department. Recently we observed an ad in a big city paper. Varieties included medium winter weight, fleecy-lined, long, short sleeve styles, wool, spring needle ribbed drawers, ankle length, thermal, elastic waist drawers, to mention only a few.

I guess nowadays folks have a choice. Used to be that only the long-handled red-colored winter underwear was available. When a man sweated, he itched. Grandpa used to put on some impromptu dance numbers while he tried to get at that itchy spot on his back he couldn't quite reach.

Now with electric dryers and all, these winter appendages no longer are hung out on the line to freeze into interesting shapes to amuse the neighbor kids. Also, no doubt, they used to serve a double purpose. If hung on the line near the corn patch the flapping arms and legs used to frighten away many a marauding crow. People in those days used to put this variety on in the fall and wear it through spring. Some even wore them year around and some of the old timers still do, we are informed.

## Farm Kitchen Recipe Round-up Scheduled

Minneapolis—A farm kitchen recipe round-up designed to help the farmer market his products more profitably will be sponsored by the Larro Feeds division of General Mills for two months starting Feb. 1, 1939.

The national contest, the first of its kind open only to those owning or living on a farm or ranch, will offer \$17,000 in prizes for the best recipes prepared from farm products in seven categories: chicken, turkey, dairy products, pork, egg, beef and lamb.

There will be a \$1,000 first prize for the winning recipe in each of the seven categories plus a two-day, all-expenses-paid trip for two to Minneapolis July 23-24 to visit General Mills' Betty Crocker kitchens and attend the city's summer festival, The Aquatennial.

**Expect Many Recipes**

"General Mills and Betty Crocker feel farm homemakers everywhere have recipes every other American homemaker ought to know about," explained D. H. McVey, vice president and general manager of the Larro Feeds division.

"This recipe round-up will give some examples of farm product-farm kitchen cookery to share with millions of other homemakers throughout the country."

"At the same time we hope it will serve as a much deserved salute to the farm wife and emphasize to rural people the part that processors of farm products are playing to help the farmer sell a lot of the things he produces."

The food preparation demands on the 3½ million farm wives are considerable, McVey pointed out, when you consider that besides being responsible for the regular three meals a day, they:

- 1) feed unexpected guests like county agents, cattle-buyers and veterinarians more than once a week.
- 2) feed an average of seven guests a week.
- 3) take food to community parties or suppers an average of 15 times a year.

"In view of all this the farm homemaker has every right to be jealous of her reputation as a good cook," McVey commended.

**Prizes Listed**

In addition to the seven \$1,000 first prizes, there will be cash awards of \$500, \$250 and \$100 for the recipes judged second, third and fourth best in each of the categories.

Seven hundred Betty Crocker Picture Cookbooks will be awarded for the next best 100 recipes in each category.

Everyone who enters will receive a citation from Betty Crocker recognizing her participation in the campaign to help promote the products of the American farm.

Entry blanks are available at most feed dealers. They also can be obtained by writing Larro Feeds, Dept. 1080, 623 Marquette ave., Minneapolis, Minn., on or before March 15, 1939.

## Atoms Suggested For Farm Land

Los Angeles—UP—Two UCLA scientists have suggested development of a portable atomic reactor for sterilizing farm land.

Drs. Amos Norman and Samuel G. Wildman said such a device could destroy and prevent reproduction of fungi, insect larva and weed seeds which greatly reduce agricultural yield.

They said the reactor would irradiate the soil to a depth of about 6 inches and cover ground at the rate of 6 miles an hour.

**FARM FATALITIES**

New York—UP—Accidents take about 13,000 lives each year on U.S. farms, according to the Metropolitan Life Insurance Co. Machinery is involved in more than a third of the fatal injuries, while drowning—with many of the victims under 5—is the second most frequent cause of farm deaths.

The average American family owned \$8,300 worth of life insurance in 1937.

**Tanks Association To Hold Meeting**

The fifth annual meeting of Southern Oregon Farm Tanks Inc., will be held Wednesday, Jan. 14, at the Gold Hill Grange hall at noon.

Grange ladies will serve dinner, according to Edwin Hayes, Eagle Point, secretary-treasurer. Glenn Chase is chairman.

**BRILL METAL WORKS**  
Commercial — Industrial  
Residential Sheet Metal Work  
Stainless, Galvanized and Copper Fabrication  
2287 West Main  
PHONE 5P 2-4440

## Predicts Low April-September Rogue Volume

Portland — Streamflow will be low in the Rogue-Umpqua this coming April - September season unless storms during the rest of the winter begin producing heavy snowfall, according to a report released today by W. T. Frost, snow survey supervisor for U. S. Department of Agriculture, Soil Conservation Service and Oregon Agricultural Experiment station.

Irrigators served from direct streamflow will be effected the most. Reservoir storage is good, he said.

Snow course measurements indicate one of the lowest Jan. 1 readings on record. Rogue-Umpqua snow courses are only 16 per cent of the Jan. 1 normal water content, Frost reported. In a normal year, 37 per cent of the mountain snow - pack is on the ground by January 1. This year only 4 per cent has accumulated.

Fish Lake, Fourmile Lake and Hiatt Prairie hold well above average water supplies amounting to 250 per cent normal, Frost said. Emigrant is nearly empty for construction purposes.

Flow of the Rogue at Gold Ray was below normal in December at 58 per cent, it was noted. Its flow since October was 78 per cent normal. The flow of the Umpqua at Elkton for October through December was 56 per cent normal.

The state-wide outlook for Oregon's 1939 water supply, as of this early winter date, is not good, Frost said. However, reservoir water supplies are excellent with most reservoirs holding well above average amounts. The mountain snow - pack averages a new record low according to current snow surveys. The next report on snow surveys and water supply conditions will be issued on Feb. 8, 1939.

## 1959 Farm Income Might Slip Some, But Hopes High

Corvallis—Oregon farm income in 1959 may slip a little from the 1958 level but should be higher than in most other recent years, reports M. D. Thomas, Oregon State college agricultural extension economist.

Despite some weak spots in Oregon agriculture during the past year, total farm income for 1958 is expected to top \$400 million. Final tally may place it third highest on record, exceeded only by 1951 and 1952. Meanwhile, farmers costs have risen and may go up a little more in 1959, Thomas explains.

Reduced support price level on wheat, coupled with large supplies and lower prices for pork and poultry products in the year ahead, are cited as key reasons for probable income decline in 1959.

Among the brighter spots are cattle and sheep which are expected to hold the sizable price gains made in 1958. Lamb prices usually follow beef trends, the economist states.

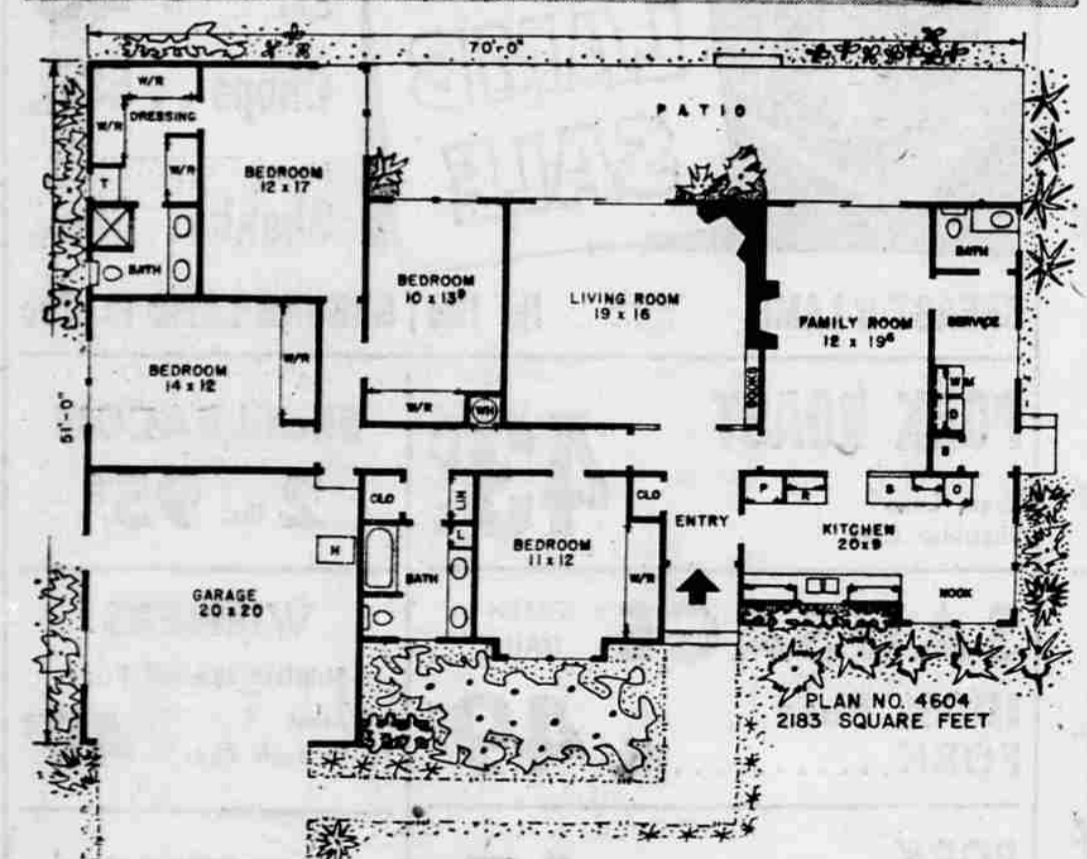
Returns from wool—holstered by continued incentive payments—seem likely to improve during the next 12 months as manufacturers clear inventories of woolen goods and rebuild supplies of raw materials.

Seed market prospects are especially encouraging for growers of ryegrass, vetch, and forage crop seeds. Lawn grass seed, especially bentgrass, is plentiful and market prospects are less promising.

Oregon's two main vegetable crops—snap beans and peas—are in good supply position. Plantings and prices of processing vegetables aren't likely to change much in 1959, Thomas says.

Potato prices during the first half of 1959 are expected to be lower than a year earlier but may do a little better in the second half. Onions are likely to be overplanted in 1959 in response to improved prices this winter.

## This Week's Home For Living



By HIAWATHA ESTES

The real quality of this 2183 square foot home goes beyond the attractive exterior. Artful planning has given it an unusually well organized floor plan, especially suitable for a large family.

The central hall makes each room accessible to the front entrance which features a double entry door. For quiet and privacy, the four bedrooms are secluded from the activity area of the home.

Big and airy, the master bedroom has its own wardrobe-dressing room and three-quarter bath. Large wardrobes provide plenty of closet and storage space in the other bedrooms and extra closets open from the hall.

The family bath has recessed fixtures and doubles lavatories, set in a tiled vanity-top counter. Cabinets below keep accessories and supplies

out of sight. A linen-storage closet has been located next to the lavatory.

In the living room, the soft-hued stonework of the fireplace extends across most of the end wall. Floor-to-ceiling bookshelves complete the setting. Glass doors slide open to the sheltered patio from both the living room and family room, to unite indoors and outdoors for summer relaxation, dining and entertaining. The fireplace in the family room could be built as a barbecue, if desired.

A rough shake roof, board and batten siding and extensive stonework lend a hand-craft charm to the rustic exterior.

The work area of this home would delight any homemaker. The kitchen is placed near the front door, yet it commands a view of the three sides of the home, enabling mother to keep track of the children when they play outside. Built-in appliances and a spacious eating area save time and steps in preparing

and serving meals. The big service area is large enough for laundry equipment, freezer, and broom closet and the half-bath is handy to the family room and play yard.

The forced air heater has been located in the garage but it could be placed in the closet next to the master bath or in the attic if desired.

Complete working drawing of the above plan can be obtained at a cost of \$7.50 for the first set and \$3 for each additional set, when ordered at the same time. This plan will be available for a period of four months from this date. Please allow two weeks for delivery. If the above home does not entirely meet with your satisfaction, a new home plan book, Homes for Living may be purchased for \$1. Send all orders for either plans or books to Hiawatha Estes, P.O. Box 404-T, Northridge, Calif.

**HERTZ TRUCK RENTAL**

Available at  
**HOPKINS RICHFIELD SERVICE**  
McAndrews at Court  
Phone 5P 3-9068