

Three Unique Machines Made in Gold Hill

Jeddeloh Plant Makes Equipment For Coast Firms

By MRS. CLYDE KELL
Gold Hill — Three unique machines, the gang-saw, a veneer dryer feeder, and a veneer saw, all of which are used in the lumber and plywood industry, are the products of the Jeddeloh Brothers Sweed Mills, Inc., Gold Hill.

Fred and Otto Jeddeloh are production at the Jeddeloh plant products among others in principal stockholders of the business. The firm, one of southern Oregon's newer important industries, has a payroll into the five figure class. The site for location of the business was selected because skilled labor could be drawn from both the Medford and Grants Pass areas. Both truck and rail facilities for shipping are available at this particular location, which was an additional favorable factor.

Various Activities
Fred and Otto Jeddeloh came to the Rogue valley in 1946. Previously, they had been engaged in various activities in the Middle West. Both men had experience and a background in the metal working industry, which they had learned after coming to the United States when young men from their homeland, the northwestern part of Germany.

The first business that they engaged in in Jackson county was that of lumbering and saw milling. The location of the saw mill was on Galls creek near Gold Hill, and they operated it until 1954 by themselves.

In 1952 they imported a German gang saw and put it into operation in their own saw mill.

Had Advantages
It soon became apparent that this machine was not built to meet American production demands. However, it had many inherent advantages which the Jeddeloh brothers recognized as being outstanding. When, after some use, the machine collapsed, the Jeddeloh brothers salvaged many of the working parts and redesigned and constructed a frame that was

more rugged and would be capable of more production. This machine worked so well and created so much interest that the Jeddeloh brothers decided to manufacture this machine. This was in 1955.

This portion of their business was incorporated in January, 1956, as the Jeddeloh Brothers Sweed Mills, Inc. Sales in the beginning were excellent and orders came in faster than the shop could produce the product.

However, in the fall of 1956, the lumber market took a decided slump and the market for saw mill machinery became non-existent. And because of bad marketing conditions, the work force was drastically curtailed. While in the beginning the plant had employed approximately 15 to 20 men this figure dropped down to 5 and 6 employees.

Research Done
Much money was spent now on research and development of new products. In the fall of 1957 a major item was ready for sale. This was a veneer dryer feeder. That this was an outstanding piece of machinery is evidenced by the fact that the plywood industry accepted this machine and started placing orders.

The principal reason for the wide acceptance of this product is its labor saving feature and its ability to make better utilization of dryer capacity. Because the product experienced tremendous acceptance it became necessary to expand the plant facilities.

In the early summer of 1958 the available floor space was more than doubled. The man power was increased from 5 to 6 employees in 1956 to about 35 now. Practically all of the workers in the production end of plant are skilled laborers, such as machinists of all types, welders, and assembly men.

Several Departments
The management of the firm is divided into several departments. All divisions are staffed by competent personnel. The product development and research department is headed by Otto Jeddeloh with J. H. Webster, Medford as chief engineer.

Vernon Nally, Gold Hill, is in charge of the production engineering department. The production department is directed by Harold Brewster, Gold Hill, plant superintendent.

The accounting department is under the supervision of Dals S. Collins, Gold Hill. General administration is done by Fred Jeddeloh, Adolph Jeddeloh is in charge of sales and his partner is Robert Brewster, of Portland.

The sales division is a separate organization, established by Adolph Jeddeloh, and was expanded by forming a partnership with Brewster.

Insure Future
Constant research and development is being done in order to diversify and insure a stable future. Just recently, a veneer saw was added to the line. It also has proved to be a product the industry is ready to accept, because incoming orders are keeping a certain number of men busy in turning out the new machine. It is another item that distinguishes itself by being a labor saving device.

Expansion of facilities will continue as the development of new products makes it necessary, the administrator of the firm said. He added that pinpointing any dates or estimating the number of people eventually employed would be pure conjecture at this time. Expansion for 1959 is still in the planning stage.

Machines are built to customer orders and are assembled and shipped to agreed delivery dates. All components and materials used in the manufacture are American made. A tremendous sum of money has been invested by the Jeddeloh brothers in the machinery required to maintain adequate production standards. The shop is equipped with the largest machine tools in this area.

Shipped Along Coast
The machines produced in this plant have been shipped to various points along the west coast. The northern most point is Port Angeles, Wash., and the southern most point, Weed, Calif. Distribution on a national scale is still somewhat in the future.

Some of the largest manufacturers of plywood have installed the machines and have found them to be satisfactory. Among the users are Weyerhaeuser Timber company, Georgia-Pacific company, Evans Products company, Martin Brothers Container and Timber company, and International Paper company.

The Jeddeloh brothers own homes in the Rogue River valley.

Father was Farmer
The men grew up on a farm and received their schooling in the north-western part of Germany, where their father was engaged in farming. As boys, they had no time left over for play and learning hobbies, such as fishing, hunting and other sports that the youth here take for granted. They were kept occupied by working on their father's farm.

They all speak fluent English, which they learned after coming to the United States. Of interest is the fact that none of them could speak the English language upon their arrival in this country. They had been taught to speak the German language correctly, which Fred said was an advantage to them in mastering the English language. Pupils in the school there are taught precision.

Fred Jeddeloh was the first of the three brothers to come to the United States in 1925. His brother, Otto Jeddeloh, following in 1926. They returned to Germany once for a visit since coming to this country. Their parents, Mr. and Mrs. George Jeddeloh, came to this country to visit in 1937.

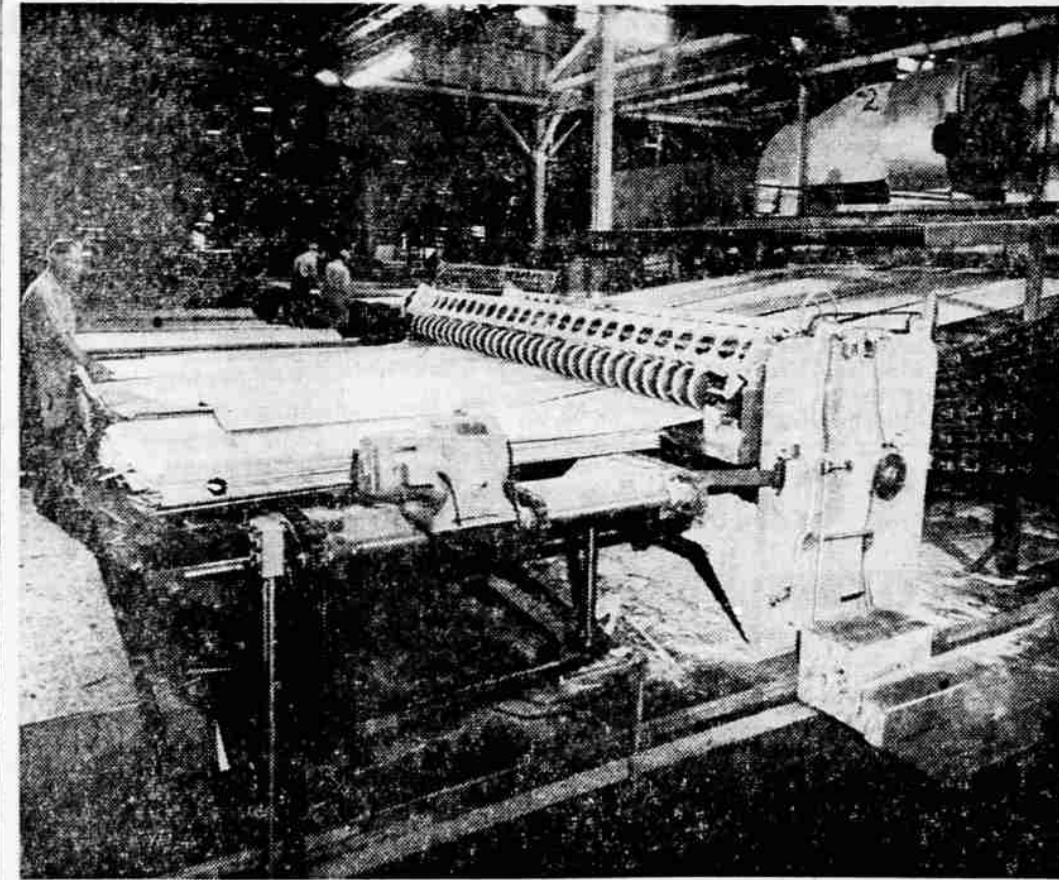
Came to U. S. in 1949
Adolph Jeddeloh and his wife, Hilde, came to the United States in 1949. All are naturalized citizens of this country.

Both Otto and Fred Jeddeloh enjoy bowling for recreation. They are members of the Gold Hill Lions club.

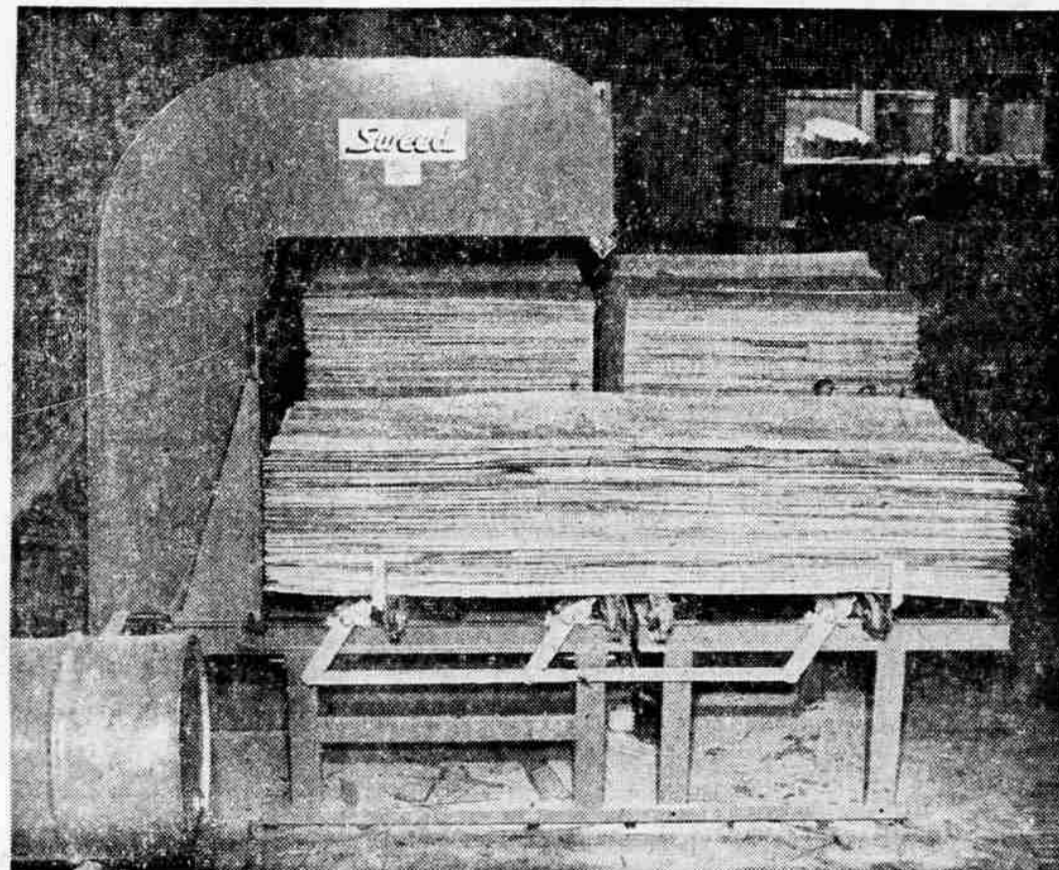
Fred Jeddeloh and his wife, Louise, are parents of four children. George, 17, the eldest of the three boys, is a freshman at the University of San Francisco in California. John, 14, and Alan, 7, and their sister, Karen, 10, are pupils in the Grants Pass schools.

Otto Jeddeloh and his wife, Willa, are parents of a son, Bruce, 9, and a daughter, Barbara, 14, who also attend the Grants Pass school.

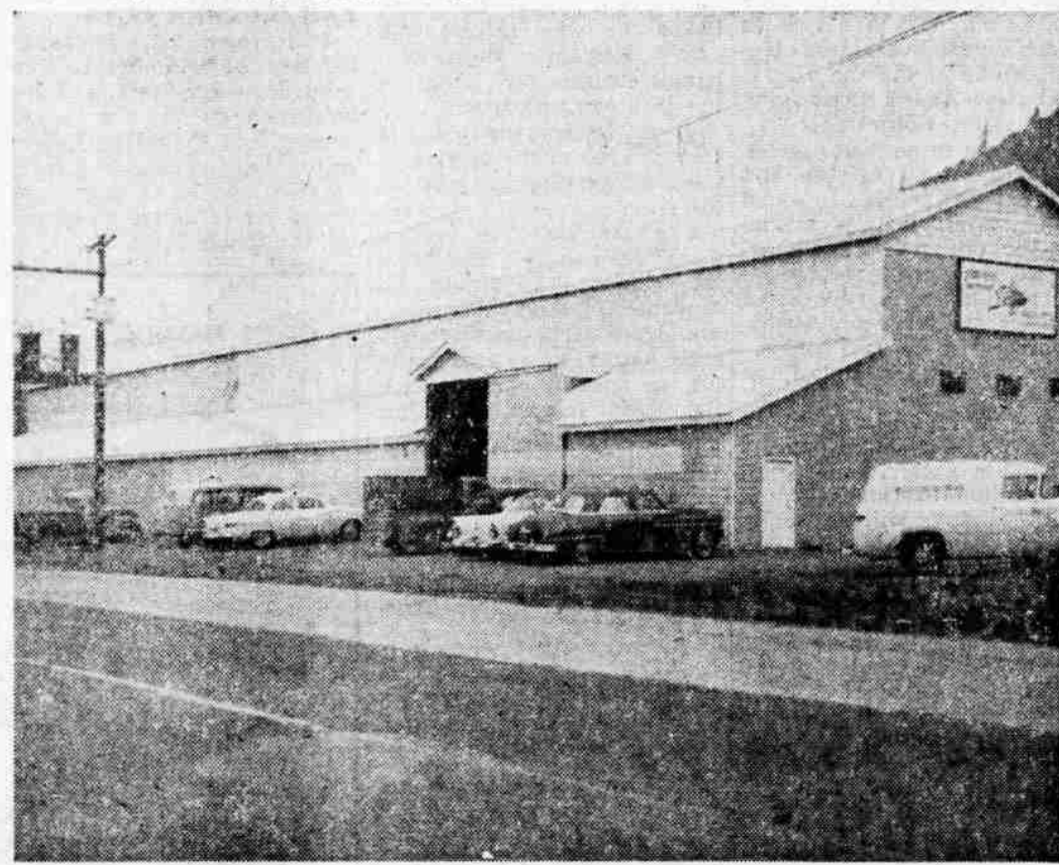
Adolph and his wife, Hilde, are parents of two sons, Horst, 18, a freshman at Oregon State college at Corvallis, and Jimmy, 6, a student in the Grants Pass school system.



VENEER FEEDER - Shows above is the veneer feeder after it was installed in a plywood mill. The feeder is one of several pieces of equipment produced by the Jeddeloh Brothers Sweed Mill in Gold Hill. Much of the equipment is shipped to lumber and plywood industries along the west coast.



VENEER SAW - The Jeddeloh Brothers Sweed mill in Gold Hill produces the veneer saw among its other products. Above the saw is shown after it was installed in a plywood plant.



JEDDELOH MILL - The Jeddeloh Brothers Sweed Mill, Inc., Gold Hill, building is shown above. They constructed the plant in 1955, and have been producing equipment for the lumber industry. Recently the plant expanded to facilitate increased demand for the machinery. (Routh Photo).

Veterans Offices To Close Locally

The Veterans Administration offices in the Jackson county courthouse will be discontinued on Jan. 2, 1959, Charles O. Porter, congressman for the fourth district, has been notified.

Following World War II Veterans Administration offices were activated in a large number of cities to cope with the increased workloads due to benefits provided veterans and their dependents by Congress. W. J. Driver, acting benefits director for the Veterans Administration, wrote Congressman Porter.

"With the decline in workload in certain benefit programs, we have reached the point, now where it is possible to close some offices near other established Veterans Administration facilities," Driver explained. "The Medford office is one of those in this category, he added. Veterans may obtain assistance at the Veterans Administration domiciliary, Camp White, Driver said. Further assistance and information may be obtained from the Veterans Administration regional office, 208 South Fifth ave., Portland 4, Ore., Driver suggested.

Ex-Convict Eludes Police in Portland

Portland—UPI—An ex-convict, Richard Albert Hansen, 19, eluded police early yesterday while he was being escorted from the North precinct to a waiting patrol wagon.

Police said the youth was arrested on an after-hours charge when he was found loitering. Hansen admitted that he had a long record of arrests and was now on probation from Oregon state prison for assault with a deadly weapon.

He broke away from officers and fled in the darkness toward the Willamette river. A search failed to disclose his whereabouts.

Former Reed Dean Is New Mills Prexy

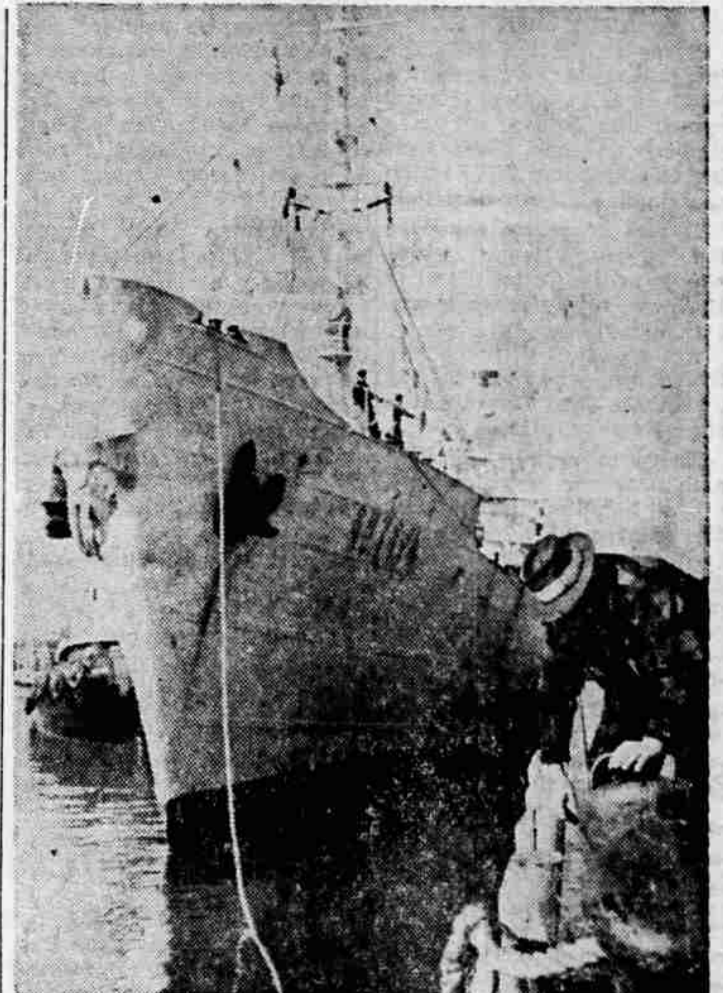
Oakland, Calif.—UPI—Dr. C. Easton Rothwell, former dean of men at Reed College in Portland, is the new president of Mills College here.

Dr. Rothwell resigned as head of the Hoover Library for War and Peace at Stanford University. He served as the library's director for six years.

Dr. Rothwell is a graduate of Reed and received his master's degree at the University of Oregon school of Education. Last June he was commencement speaker at graduation exercises of Portland State college.

He is a brother of Mrs. Sam Wilderman of Portland, assistant registrar at Portland State, and a brother-in-law of Sam Wilderman, state representative from Multnomah county.

VERY SPECIAL DELIVERY
Memphis, Tenn.—UPI—While sorting mail at the post office here, E. M. Copeland came across a letter addressed to "People of the Moon, Planet Moon, World's Universe." There was no return address on the letter which, of course, was supposed to have been sent air mail.



RUSS SHIP IN SAN FRANCISCO—The Russian scientific vessel Vityaz docks at San Francisco, after an international research mission throughout the Pacific Ocean as part of the International Geophysical Year project. The ship's scientists plumbed a record depth of seven miles near the Philippines, and dredged up several previously unknown species of sea animals. In addition to 95 men, the Vityaz carries 35 women scientists.

Bellugi Accepts Portland Baton

Portland—UPI—Piero Bellugi, present conductor of the Oakland, Calif. Symphony orchestra, will take over the baton of the Portland Symphony, according to symphony officials here.

Mrs. Paul Feldenheimer, president of the Portland Symphony society, said Friday she had talked with Bellugi's business manager in New York and that the contract would be signed and mailed to Portland within a day or two.

Mrs. Feldenheimer said the contract is for two years, at \$12,000 the first year and \$14,000 the second. Bellugi, 34, a protégé of the late Arturo Toscanini, will succeed Theodore Bloomfield, who leaves Portland after the 1958-59 season to become conductor of the Rochester Symphony in New York.

ANOTHER MOUTH TO FEED
Ithaca, N.Y.—UPI—Miss Ellen Ann Dunham is one boss who doesn't mind losing a woman worker because of pregnancy. Miss Dunham says she just tells herself: "There's a future customer." She is a vice president of a company that makes baby foods.

STA-OFF CORN REMOVER
Great instant relief from pain and swelling. Removes hard corns, soft corns between the toes, callouses, warts, papillomas, club nails. It contains several different oils that soften, loosen and does not cause the irritation as do strong acid mixtures. When all others have failed try this one. Try our Bunions Relief, which relieves pain, soreness, swelling first or second application. Both remedies sold on money back guarantee.

Exclusively at WESTERN THRIFT

ANDY'S BEST BUY!

"CHRISTMAS 1957—Happy Day, a Wittnauer ALL-PROOF AUTOMATIC came into my life!"

Modern efficiency—the Wittnauer self-winding, trouble-proof watch. Here is the luxury of a dress watch, the convenience of a self-winding watch, PLUS the stamino of an "All-Proof" watch—possible because of the long experience and vast resources of Longines-Wittnauer.

S&H Green Stamps

ANDY'S

Your Friendly Credit Jeweler
15 North Central

NOTHING IN THE EAR

new **ZENITH** QUALITY EYEGLASS HEARING AID

• No Cords • No Ear Button • Comfortable Self-Adjusting Sound Plate • Fits Most Eyeglass Frame Fronts • Trim, Smart Styling

For those who can use a bone conduction hearing aid

The Imperial

FREE QUALITY TEST! Come in or call for home appointment

GEORGE E. WHITE, Hearing Aids
131 West Main, Medford • Phone SP 3-1841

To our friends and patrons

warm and sincere

Seasons Greetings

ACME CLEANERS
PICKUP and DELIVERY
1728 N. Riverside - SP 2-4263

WE GIVE SILVER DOLLAR STAMPS

FOR LITTLE LINCOLNS
Holdenville, Okla.—UPI—L. O. Moore is turning a hobby into a profitable enterprise by making miniature log cabins, which he sells as playhouses for children. The houses are four-by-five feet and 52 inches high. Moore uses rough pine lumber, the kind sawmills toss away in order to get to the better beneath. He makes an average of three of the cabins each week in a small workshop behind his house. The amateur carpenter turned to the hobby after undergoing an operation a year and a half ago. His occupation is oil field driller.

PLANE LANDS SAFELY
London—UPI—A Trans-Canada Airlines Superconstellation carrying 57 persons landed safely here yesterday with a flat tire. The plane, which blew the tire while taking off from Montreal, circled the airport for three hours using up excess fuel before making the landing.

Spirit lake located in north Idaho has a bottom of solid stone.

Portland Youth Held in Assault

Portland—UPI—Police yesterday said a 19-year-old youth was being held under \$1000 bail in connection with the assault of a Washington high school senior.

Erskine Bowlen Jr., Portland, was being held on the assault charge.

He is accused of knocking down Ted Settlemeir, 18, also of Portland, in a school corridor Thursday.

Police said Settlemeir was attacked by four boys who fled when other students appeared.

The attack, along with a similar incident at Benson Tech, was apparently inspired by a plan to extort money by force, police said.

PLANER BLOX

• CLEAN, SELECT QUALITY
• Fill Your Storage Now
• Big Double or Single Loads

MEDFORD FUEL CO.
Phone SP 2-2111 Court and McAndrews

You Rely on Him

—for ever increasing needs. More and more you depend upon the farmer. You depend upon him as a friend and neighbor—as a skilled tiller of the soil—breeder of cattle—good businessman—as a man you trust and respect.

Count on Us, Too

—to constantly find new ways to be better friends and neighbors—to find new ways to serve you better. You can count on us for an essential, efficient service at any hour of need.

Conger-Morris FUNERAL DIRECTORS
WEST MAIN AT SIXTH

"Your TV Weatherman"
KBES-TV Monday Thru Friday 6:00 p.m.

ASHLAND MORTUARY
4th and C Streets Ashland

Member National Selected Morticians by Invitation