

Articles Accepted For SOC Foundation

Ashland—Articles of incorporation for the Southern Oregon College Foundation have been accepted by the Oregon state corporations department, it was announced at a joint dinner meeting of the SOC Citizens Council and the SOC Foundation trustees last week.

Seventeen prominent southern Oregon citizens and educators out of a total membership of 21, adopted the constitution, by-laws, and the general purposes of the foundation, according to Dr. Elmo N. Severson, college president, and selected pro-tem officers to serve until April, 1959, at which time official elections will be held.

Interim officers are Dr. Stevenson, president; Ralph Moore, vice president; and Frank Van Dyke, secretary-treasurer.

Object of Foundation

The object of the foundation as outlined in the charter is, in general, "to aid and promote research, and charitable activities and purposes; and specifically, but not in limitation of the foregoing to acquire, manage, and dispose of, sums of money, real properties, and securities as owner or agent or otherwise, for the benefit of Southern Oregon college or any successor institution, and for the support or furtherance of any or all of the educational, scientific, research, or charitable or other lawful activities or purposes thereof."

Functions of the foundation include serving as an escrow agency; making funds available for extra Oregon state board of higher education purposes (faculty, student, and research services); political activities on behalf of the college; and working as an intermediate agency between donors and the OSBHE.

Expansion Discussed

Expansion of the campus in terms of curriculum offerings, land, and buildings, was discussed by Dr. Stevenson, who pointed out that the college now ranks fourth in enrollment out of 26 Oregon colleges and universities, and third in the size of its campus.

Foundation members and founders attending were Arnold Gralapp, superintendent of schools, Klamath Falls; Ralph Moore, Moore Lumber company, Grants Pass; C. W. Cray, Medford businessman; Lester Harris, principal, Medford High school; Mrs. Jim Busch, Busch Ford agency,

Ashland; Frank Bash, California Oregon Power company, Medford; Herb Grey, Medford Mail Tribune, Medford; R. Jeub, retired businessman, Coquille; Ben Day, attorney, Medford; Eugene Thorndike, Medford banker; Phillip Lowry, attorney, Medford; Frank Van Dyke, attorney, Medford; and Otto Bohnert, farmer, Central Point.

Members unable to attend were Don MacGregor, Grants Pass businessman; Mrs. Cecil McCracken, teacher, Grants Pass; Robert Root, orchardist, Medford; Lawrence Cushing, attorney, Cave Junction; Charles Cooley, Grants Pass businessman; Ralph Stuller, Coquille Valley Sentinel editor; Theodore Conn, Lakeview attorney; George Flanagan, Elk Lumber company, Medford; and Forrest Cooper, attorney, Lakeview.

Medford Architect Takes Wisconsin University Job

Donald H. Sites, architect and partner in the Medford firm of Seibert and Sites, has accepted a position as head of architectural development at the University of Wisconsin.

Sites said he expects to assume his duties about Feb. 1, remaining here until several projects currently under construction are completed.

At Wisconsin he will be responsible for two campuses, in Madison and in Milwaukee.

Former Teacher

Sites, who resides here at 15 South Keene Way dr., moved to Medford from Eugene three years ago. He was formerly on the teaching staff of the University of Oregon's school of architecture.

Among the projects carried out by Sites and William H. Seibert during their partnership are a 20-year development study for Southern Oregon college, the Jackson County Juvenile Detention Home, the "Security" building on Hawthorne ave., an electronics laboratory for Linfield Research institute and a trailer manufacturing plant for Mid-states corporation, both at McMinville, and a Later Day Saints church at Etna, Calif.

The firm recently undertook remodeling of the community hospital building on East Main st. as an office building.

Seibert will continue his practice in Medford.

MacCracken Named To School Commission

Ashland—Dr. Elliott B. MacCracken, chairman of the Southern Oregon college mathematics department, is serving as a member of the Northwest Commission of Secondary and Higher Schools committee for the accreditation of the Western Washington college of education at Cheney.

Committee work by Dr. MacCracken is largely concerned with the physical sciences and mathematics areas in regard to teaching, teaching facilities, departmental procedures, and institutional policy in regard to these areas.

College President Leads Delegation

Ashland — Southern Oregon college faculty and administration representative at the recent conference in Salem on the needs of secondary education were led by Dr. Elmo N. Stevenson, president.

Accompanying Dr. Stevenson were Dr. Bill Sampson, chairman of the education division; Dr. Arthur Kreisman, chairman of the humanities division; Dr. Marshall Woodell, professor of social science; Dr. Floyd Taylor, associate professor of mathematics; Clarence Biebel, associate professor of science; Chester Squire, audi-visual aids director; and Dr. Eugene Bowman, professor of education and mathematics.

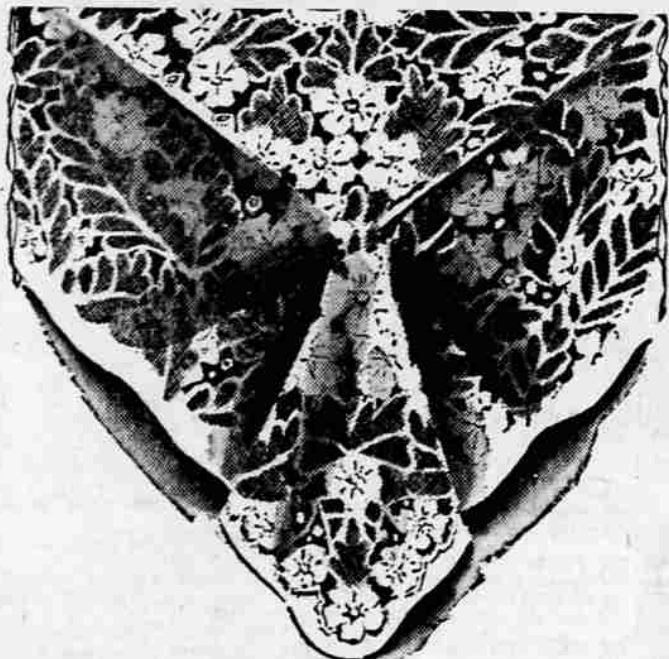
The conference was attended by more than 300 educators and non-educators.

Dr. James B. Conant, former president of Harvard university and ex-ambassador to West Germany, discussed various ways by which the comprehensive needs of American high school students may best be served in the secondary schools.

United States Crop Reporting Board estimates there will be six per cent increase in the number of sows farrowed in ten of the Corn Belt states.

PENNEY'S

ALWAYS FIRST QUALITY!



Fashion Manor Quality
LACE TABLE CLOTHS
54" x 54" **2.98** 72" x 90" **4.98**

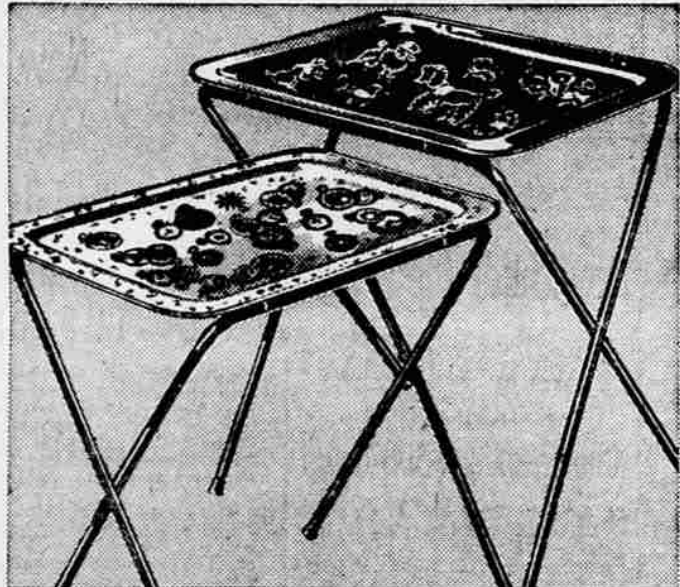
For truly rich appearance and to give your Thanksgiving table that smart look, buy these beautiful woven patterns. Lace table cloths—that wear and launder so well. Beautiful blend of Avisco, Rayon and Cotton stain resistant finish.

LINENS — PENNEY'S STREET FLOOR

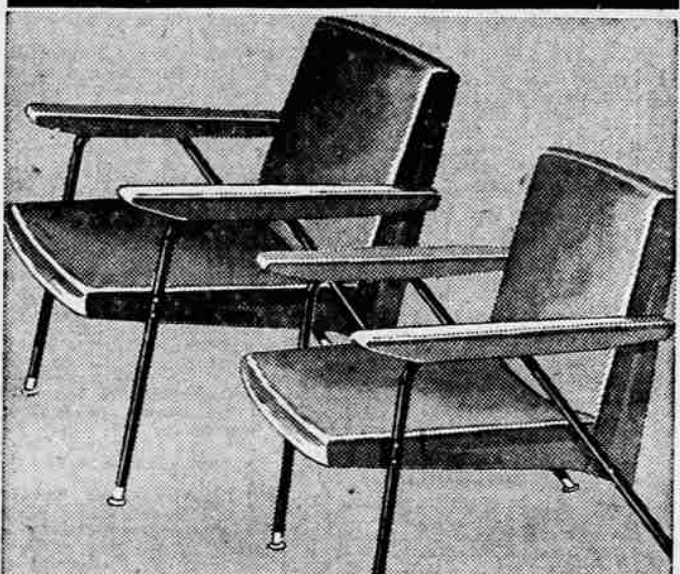
12-PIECE PLACE CLOTH LUNCHEON SET

Beautiful, rich looking 12" x 18" woven place mats. Washable metallic thread decor. You get 6 large place mats with 6 large 12" x 12" matching napkins. Colors: White grounds with trims of gold, pink, aqua or luggage. **3.98**

PENNEY'S STREET FLOOR



BUY BY THE PAIR!



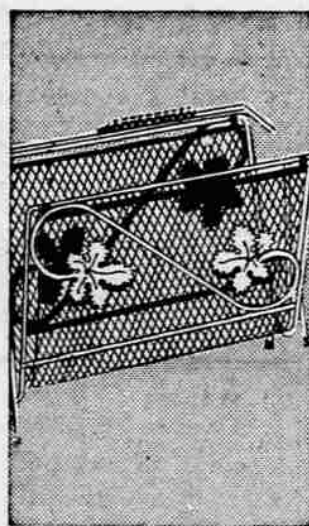
OCCASIONAL CHAIRS

"More!" from every dollar you spend at Penney's!



BUY! 9-PIECE BEVERAGE SERVER

2.98

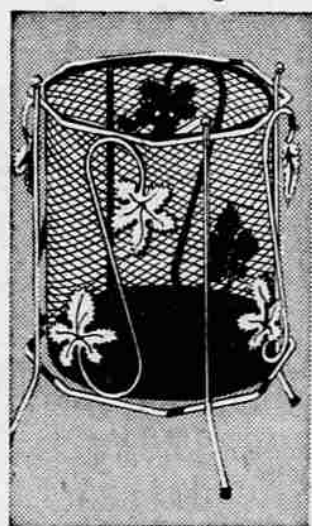


MAGAZINE RACK AT SAVINGS!

4.98 16 by 16 inches

Sparkling gift! Penney's big-value hostess set serves 8 at once. Brass finished steel caddy holds eight 10-ounce tumblers in decorator designs.

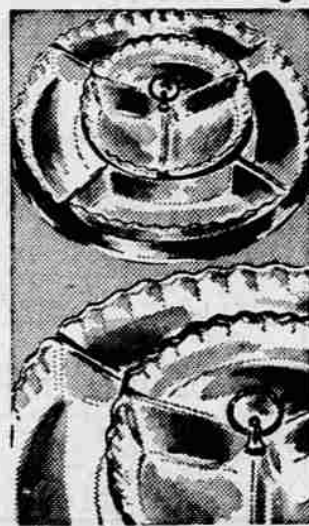
Smart Penney accessory for every home! Gilt leaf adorned with stylish black or coffee brown liner, brass-plated frame! Plenty roomy, too!



IVY LEAF WASTE BASKET

4.98 16 inches high

Made for the modern home . . . and they're yours for so little at Penney's! Brass plated frame with metal liner! Black 'n' brass or new coffee 'n' brass finish!



big sized low priced LAZY SUSAN

2.98 16 inch diameter

This California-styled Penney step-saver lets you serve a wide variety of hors d'oeuvres all at once! Removable ceramic dishes, wooden swivel base, more! Others 4.98.



SOLID BRASS PLAQUES

1.49 - 2.98

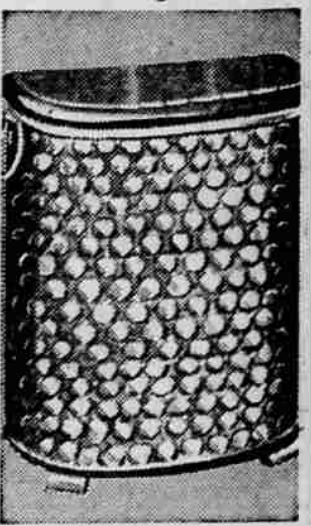
Imported from England Embossed patterns in solid brass plaques, imported from "England." 12", 14" or 17" diameter sizes. A marvelous gift! **PENNEY'S STREET FLOOR**



IMPORTED CHINA CUP & SAUCER

1.00

Collector's fine china cups and saucers, heavy gold decoration. Translucent china—8 beautiful styles in 3 colors! Imports! **PENNEY'S STREET FLOOR**



STEEL RIBBED CLOTHES HAMPER

6.44

Pearled finish. Comes with 2 towel rings. Solid Penney construction thru 'n' thru! Reinforced fibre weave body . . . stunning pearled lid that won't chip or peel! 12 by 21 by 25 inches high! 3 colors. **PENNEY'S STREET FLOOR**

—FOR EXTRA SAVINGS!—

COVER YOUR TABLES WITH PARTY PRINTS FOR THE HOLIDAYS AHEAD! BUY THEM NOW!

FOR YOURSELF AND FOR GIFTS!

★ **SHOP MONDAY**
9:30 a.m. till 9 p.m.

Beautiful New
SCREENED PRINTED LUNCHEON CLOTHS

1.98
52 x 52 inch size

52 x 70 inch size **2.98**

Company coming? Here's how to make things extra nice. Lovely full sized cloths . . . bordered with leaves . . . or strewn with posies. Pink, blue, yellow prints, with a subtle "gold" thread woven through the cloth. Simply beautiful at Penney's tiny price. They're machine washable, too. Penney's laboratory tested to make certain.

LINENS — PENNEY'S STREET FLOOR

65-Inch Snow White TABLE CLOTH DAMASK
By the Yard

Make your own tablecloths! Self pattern mercerized white table damask full 65 inch width, selvage edge. **1.59** yd.

FAMOUS PROCTOR AUTOMATIC ELECTRIC TOASTERS

Exciting new toasters for your kitchen . . . exciting special low price, too! Thermostatic control toasts bread to the color you like it. Chrome plated with black trim. Cord attached. **8.88**

PENNEY'S STREET FLOOR

JUMBO SIZE T.V. TRAY TABLES
VERY SPECIAL!

2 for 3.88

Compare This Outstanding Buy!

More uses indoors, outdoors—our tray-tables serve or hold everything from snacks to a dinner . . . trays are a big 16 by 20 inches. All steel. Stand 23 inches high.

PENNEY'S STREET FLOOR

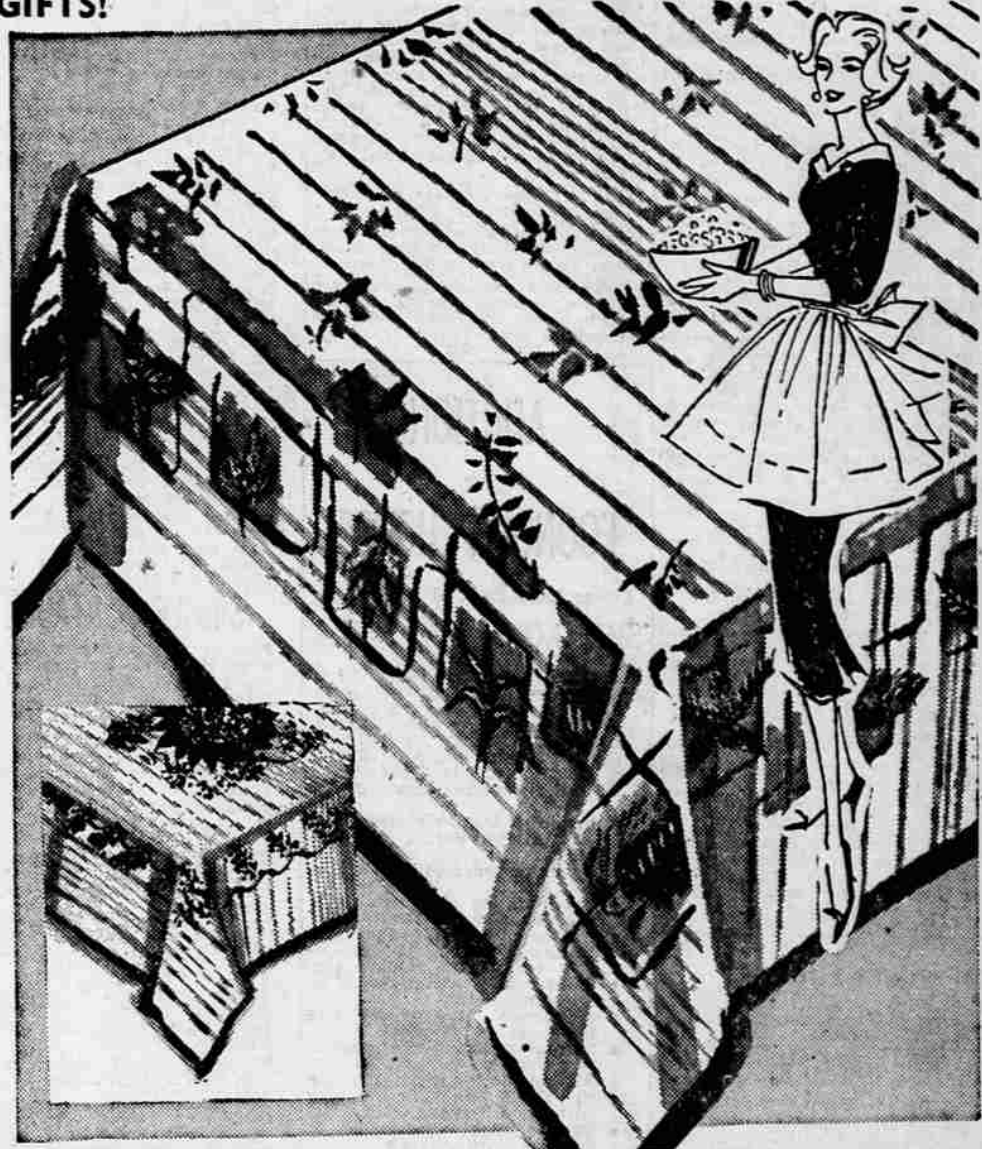
Leatherette Upholstered No-Sag Spring Construction OCCASIONAL CHAIRS

VERY SPECIAL!

\$10.

Repeat of a sell out! Don't wait this time! Hurry to Penney's and lay away them for yourself and for gifts! Quality made throughout! Choose yours with black frame, black or turquoise upholstery. Brown frame, tangerine or white. Cleans with a damp cloth.

PENNEY'S STREET FLOOR



AUTOMATIC COFFEE MAKERS

8.88

For perfect coffee all the time, 5 to 9 cup capacity, has graduated marks for easy measuring. You've seen these famous make automatic coffee makers at a much higher price. Turns off when coffee is made and keeps it at exactly right temperature. 1-year warranty! Save!

PENNEY'S STREET FLOOR



5-WAY ELECTRIC FRY PAN

13.88

Complete with Cover

Our famous-make electric pan fries, grills, bakes, stews, roasts automatically! Immersible, because heat control detaches. Cast aluminum. No-mar legs. Family meal size 11"x11".

PENNEY'S STREET FLOOR

CLEANS FAST—ITS IMMERSIBLE! CONTROL IS DETACHABLE!

IMPROVE YOUR FIREPLACE!



Thermo-Rite
TEMPERED GLASS ENCLOSURE FRAMED IN SOLID BRASS!
No Sparks—No Smoke—No Floor Drafts
LOWER FUEL BILLS!
Uniform heat from floor to ceiling. Burn wood, presto-logs or briquets. You control fire—your home and family safer!
SEND FIREPLACE WIDTH and HEIGHT, RECEIVE Colorful Booklet FREE!
PHONE 5P-7166

SMITH-DYNGE LBR. CO. 8th St. at Fir

CALL NOW!
SP
2
7
1
6
6