

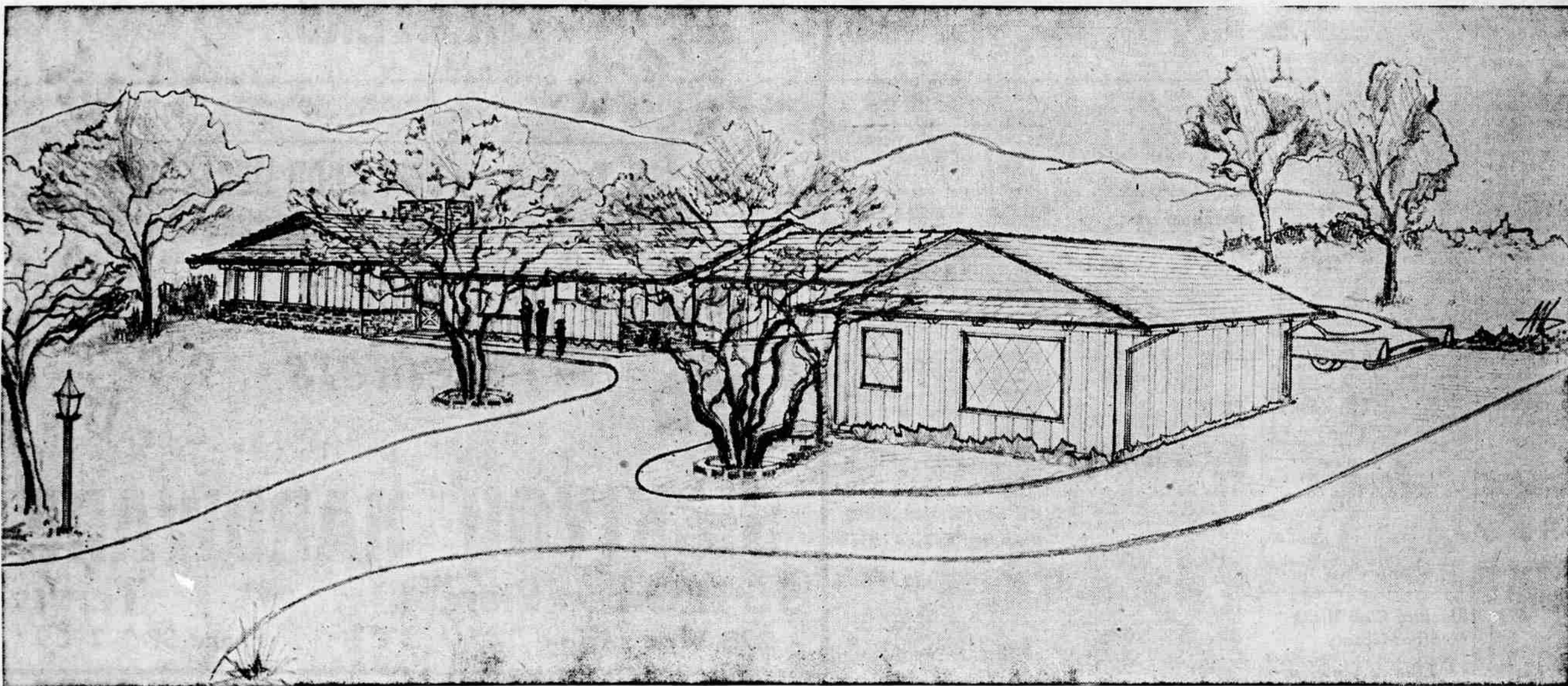
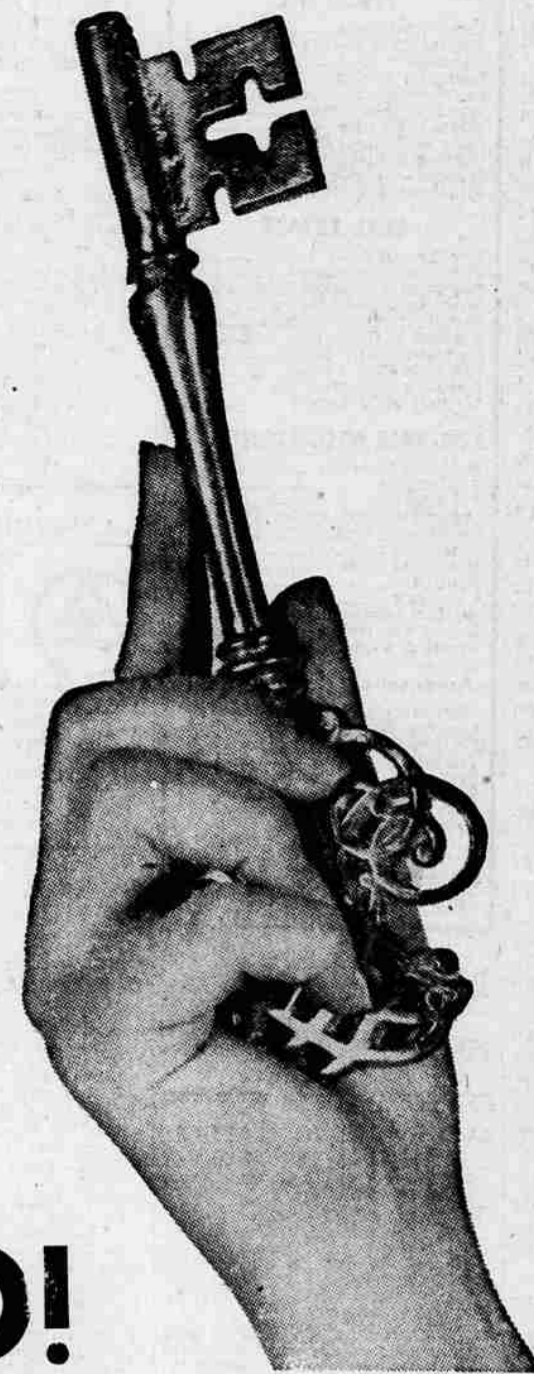
OPEN AGAIN—

For those who could not come last Sunday!

Your KEY to Good Living...

A Home Built by—

FRANK W. CATALANO!



Living Area 1820 Sq. Ft. — Garage 480 Sq. Ft. — Under Roof 3314 Sq. Ft.

OPEN TODAY

FROM 10 A.M. to 6 P.M.

316 Modoc, Verde Hills

This appealing ranch-style home opens new, delightful opportunities for gracious family living . . . three bedrooms, three baths . . . a spacious family room, lots of built-ins and roomy cabinets . . . unusual features that are far, far too numerous to mention. This lovely home, with sweeping circular drive that passes through a wide breezeway terrace, must be seen to be appreciated . . . and we hope that YOU will see it—TODAY!

BUILDING MATERIALS
•
MEDFORD LUMBER CO.
4 West 3rd St.

MILLWORK
By
PADGHAM GLASS & MILLWORK CO.
1309 Court St.

CEMENT
By
TRU-MIX CONCRETE CO.
248 E. McAndrews Rd.

PLASTERING
By
HESS & BOYE
750 Lozier Lane

CARPETING
By
DEMPSTER FURNITURE
45 N. Bartlett

General Electric
APPLIANCES
By
HOME APPLIANCE CO.
115 E. Main St.

PLUMBING
By
DON'S PLUMBING
529 Hamilton

STONE MASONRY AND FIREPLACE
By
FLOYD MAGEL
401 N. Berkeley Way

ELECTRICAL WIRING
By
COURT STREET ELECTRIC
1127 Court St.

PAINTING AND WALLPAPERING
By
AL'S PAINTING
805 Cedar St.

CERAMIC TILE
By
GLOSSOP & MOORE
2356 S. Pacific Hwy.

FLOOR COVERING & PANELITE COUNTERS
By
S-W FLOOR COVER SHOP
709 S. Riverside

COLEMAN BLENDAIR FURNACE

INSULATION
By
Commercial-Home Insulation Co.
2515 W. Main