

Millions Poured Into Grand Tetons

The following is a condensation of a series of articles appearing in The Oregonian and the second of two articles dealing with the Jackson Hole country and Grand Teton National Park in Western Wyoming. These travel articles are a continuing series sponsored jointly by the Oregon State Motor Assn. and the Oregonian.

By JOHN A. ARMSTRONG
Sunday Editor, The Oregonian

When John D. Rockefeller Jr. contributed \$6,000,000 for construction of Jackson Lake Lodge, a magnificent hotel with guest cottages in the heart of the Jackson Hole country, he was moved to do so because he knew the increasing thousands of yearly visitors to Grand Teton National Park had no place to sleep.

Jackson Lake Lodge, located on U.S. 26 at Moran Junction, Wyo., is big—525 feet long.

It is definitely impressive—with its much photographed main lounge picture window, 26 feet high and 60 feet long, framing Jackson Lake and the Grand Tetons.

It is an expensive looking showplace—\$600,000 spent on interior decorations, with motifs drawn from the mountain men who at one time roamed this area, and furniture (oak) and color schemes conforming with the alpine wild flowers and natural surroundings of Jackson Hole.

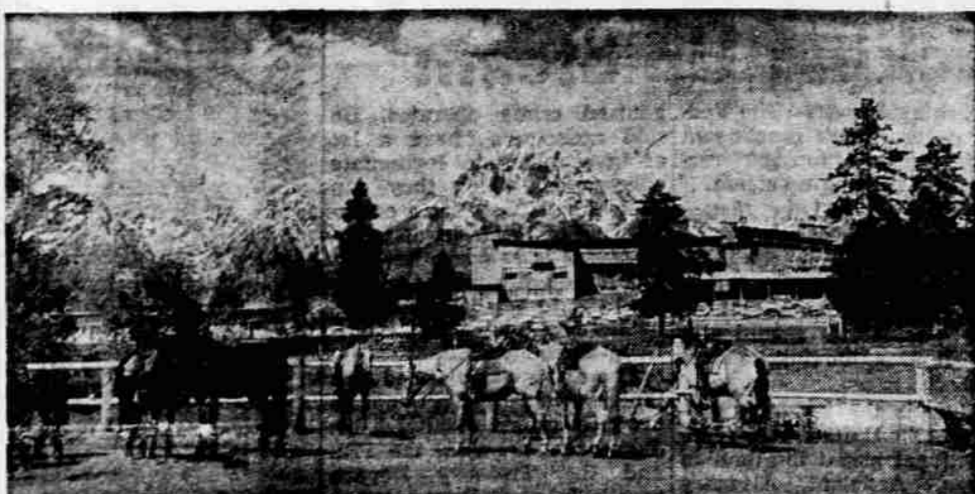
Yet we found that you can enjoy one of the 50 rooms in the luxury of the main lodge for the same price you would pay in a first-class hotel in any large city, \$14 to \$18 a day per couple. The latter rate is for a room on the front, with the prize view.

Other Rooms Cheaper

There are 250 additional rooms in the comfortable, modern guest cottages (tile baths, room service, telephones) with rates comparable to similar accommodations along the nation's highways, \$12 for two persons, \$15 for four.

Jackson Lake Lodge is built on land leased for 20 years from the Park Service. It is operated by the Grand Teton Lodge Co., a subsidiary of Rockefeller's non-profit conservation foundation, Jackson Hole Preserve, Inc.

The company also operates the Jenny Lake and Colter Bay resorts and the park's transportation company. Any profits realized from any of these operations must go back to the Jackson Hole Preserve, Inc. for making more national park improvements and carrying



Jackson Lake Lodge, built at a cost of \$6,000,000, stands in the heart of the Jackson Hole country in western Wyoming. In the background are spires of the Grand Tetons.

out other conservation projects.

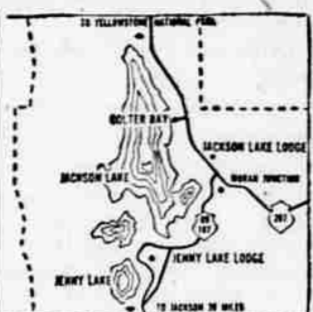
What is there to do in Grand Teton National Park? Well, there's a good deal more to do than just sit in the sun and look at the Grand Teton mountains, watching the fitting changes of mood and appearance that occur from hour to hour during the day.

Local Guides Available

There's a full daily social schedule at the lodge, organized by a full-time social hostess (who also can provide baby sitters), which includes such activities as: six-hour float trips, 30 miles down the Snake River in large rubber boats; guided horseback rides over back country trails; sightseeing bus tours of the park; moonlight hayrides and wicker roasts; evening park naturalist programs; story hours for the children.

If you prefer to be on your own, some of the possibilities for vacation fun include: stream or lake fishing from June 1 to Oct. 31 (Wyoming license required, boats or fishing tackle can be rented, or guides hired, at Colter Bay); swimming, hiking on the 130 miles of trails in the park, some through the valley, more rugged ones leading to the high country and alpine lakes.

Portions of one of the largest elk herds in the nation, more than 15,000, can be seen at the National Elk Refuge near Jackson, or at the wildlife range near the east entrance of the park. Buffalo also can be seen in the latter location. You may see moose or beaver in the marshes near



Jackson Lake Lodge, or if you're lucky, spot a rare trumpeter swan.

Lectures Offered

Park naturalists provide a full program for the public from mid-June until Labor Day—free guided nature walks, campfire programs, informal illustrated lectures.

Wild flowers are a major attraction in Jackson Hole during June and July, and during July and August in the alpine meadows of the Tetons. Wild geraniums, lupine, larkspur, fireweed and Indian paintbrush are some of the many varieties you will see.

U.S. Supplies Data

Detailed information on the park can be obtained by writing: Superintendent, Grand Teton National Park, Moose, Wyo.

Six miles north of Jackson Lake Lodge on the wooded shores of Jackson Lake, the Colter Bay recreation area provides another level of overnight accommodations, designed for low-cost family vacationing.

This extensive development, opened in full last season, is a pilot project for Mission 66, the National Park Service's 10-year program for improving our parks.

Two Join in Effort

Colter Bay was developed jointly by the Park Service, which furnished land, utilities, roads, parking areas, camp sites, boat basin and concrete launching ramp, trailer installations and visitors center, and the Grand Teton Lodge Co., which contributed more than \$1,000,000 (a gift from the Jackson Hole Preserve, Inc.) for tourist accommodations and service facilities.

Cabins, trailer park and campground are grouped around a central area of service facilities—cafeteria, general store, snack bar, laundry and bath building, marina, picnic area, amphitheater, service station and park visitor center.

The trailer area is the first of its kind to be developed in a national park, providing 112 paved parking spaces, staggered to give maximum view, on a site that slopes gently down to the lake, and designed for pull-through parking to avoid backing of trailers. The fee for all of this is \$1.50 per day.

The public campground is free. It provides 250 sites, located along paved access roads. Each site has its own paved parking space, cooking grate and table with benches. There are tiled rest rooms throughout the area.

Employment Goal of 200 Persons Set By Handicapped Industries, Inc.

Handicapped Industries, Inc. has an employment goal of at least 200 persons, according to Eric A. Allen, its president.

Allen held up a sack of colored wooden blocks before the Jackson County Chamber of Commerce roundtable Monday noon and gave a progress report.

The blocks, he said, are currently being distributed to grocery and drug stores in the valley. He said a firm in Portland has placed an order, and that Montgomery Ward in Oakland, Calif., has ordered 500,000 bags.

Use Mill-Ends

"No other colored blocks on the market," he said, "sell for less than \$1.98." He said Handicapped Industries uses mill-ends for the blocks, coloring them with vegetable dye.

"We practically get the wood donated here in the valley," he said. He quoted the price for the Handicapped Industries blocks as 98 cents.

Allen said four handicapped persons are currently working in the plant at 825 West Jackson st. He said there were about 800 handicapped persons in the Rogue valley excluding Camp White, at least 400 of whom are capable of employment.

Set Up Plants

He said 75 to 100 could work in the West Jackson st. plant and that he hoped to set up assembly plants in Ashland and Grants Pass. Others, he said, could work in their homes.

"I'm going to be disappointed if we don't have at least 200," Allen said.

Allen discussed other possible projects. One is assembling Christmas tree lights. Another is Indian "Whoopie" sticks, an example of which he demonstrated.

A "whoopie" stick is a notched stick with a propeller at one end. Rubbing the stick with another stick causes the propeller to spin. But when, according to Allen, the operator says "Whoopie" the propeller spins in reverse.

"We can sell millions of these," he said.

Allen also mentioned a patented toy consisting of a man in a parachute sent up a kite string. When the man reaches the kite, a release is tripped and he descends in the

parachute.

He said Handicapped Industries could get an exclusive right to manufacture this toy in the United States.

The first toy to be assembled when operations started last summer was a toy rocket. Thousands of them have been put together so far, he noted.

Handicapped workers, Allen said, could double the output of unhandicapped persons.

SOC Faculty Takes Part in Meeting

Yreka, Calif.—Faculty members and students from Southern Oregon college, Ashland, participated in a county-wide meeting of Future Teachers of America in Yreka recently.

Miss Florence Allen, advisor of the Student Oregon Education association from SOC, and Mrs. Betty Lou Dunlop, associate professor of education, SOC, were among the speakers.

Students participating in a panel discussion included Miss Marlene Addington, Dave Deller, Miss Yvonne Fields, Miss Toby Kay Fox, Miss Lois May, Mrs. Judith Paulsen, Don Sutton and Dan Thompson.

It was the first county-wide meeting of the FTA in Siskiyou county, and grew out of the expressed interests of members of the Yreka High school Future Teachers club.

Moscow Adopts Chemise, Sack Line

London—(UPI)—Moscow has accepted the chemise and sack lines—with reservations.

Moscow radio broadcast a fashion survey Tuesday night in response to questions from London listeners.

"The chemise line," said the commentator, "is convenient in modified form for the average working woman and very suitable for the fuller figure... as for the sack line, it's not so popular as the chemise line."

The broadcast summed up: "Most of the new lines are introduced and worn here, but in moderation."

Noxious Fumes Fell 47 Persons

Fayetteville, Ga.—(UPI)—Noxious fumes accumulated in a local Masonic hall Tuesday night and overcame 47 persons attending a civic club meeting.

Ambulances rushed the victims to hospitals here and in Atlanta. Doctors said all were expected to recover.

Investigators attributed the accident to carbon monoxide from an unvented natural gas heater that had just been installed in the building. They said fumes from wax applied to a concrete floor also might have been involved.

Portrait painter dies. Stamford, Conn.—(UPI)—Howard L. Hildebrandt, 84, a well-known portrait painter, died Tuesday in a rest home.

FIRE DRILL

Athol, Mass.—(UPI)—Nurses at Athol Memorial Hospital have begun a new course of study, under brand new instructors. The girls in white, armed with extinguishers, will learn to fight fires. Athol Fire Chief Mervin L. Perley and Deputy Fire Chief Edmond Tetreault of neighboring Greenfield will direct the course for hospital authorities.

PAINT
with
Treasure Tones
from
MEDFORD PAINT
& Wallpaper Store
6th & Holly • Ph. SP 2-9321

NO OUT-OF-DATE EQUIPMENT FOR US!

We're prepared with modern equipment to give you the finest service on your moving day! You can rely on Davis to move your valuable possessions with care, speed and at reasonable rates!

CALL DAVIS... FOR THE BEST MOVE OF YOUR LIFE!

DAVIS TRANSFER AND STORAGE CO.
Crating & Packing
• Medford—139 South Fir • Phone SP 2-6273
• Ashland—240 4th St. • Phone MU 2-8552

BEKINS AGENT FOR MEDFORD AND ASHLAND

MEDFORD HEALTH CLUB

3 West 6th St.
PHONE
SP 3-6686

EXPANSION

Special

Don't miss out on this

Special Expansion Offer!



Family Memberships

Entitling the Whole Family to Use Complete Club Facilities

Regular \$180⁰⁰ — Save \$80⁰⁰

NOW **\$100**
ONLY

PER FAMILY! TERMS AVAILABLE

This Offer Ends Saturday, Nov. 22

The "Health-All" System of reducing and body conditioning is a result of many years of research and experience in body proportioning weight control, and muscle building. The recently developed technique of spot reducing and spot development makes it possible for you to have a healthy, attractive body with a minimum of effort and expense. Medford Health Club will be operated for the exclusive use of members only for a low yearly membership fee.

COMPLETELY EQUIPPED

with all the newest of modern electrical machines for body building, conditioning, weight reduction.

- STEAM BATHS
- STEAM CABINETS
- MASSAGES
- SUN ROOM For that year-Around Tan!
- ALL EQUIPMENT, Gym Clothing, Towels, Lockers, etc., included at no extra charge!

Wherever you go—
Wherever you move—
There's over
275 Nation-Wide HEALTH STUDIOS
for your use!

Don't Wait! This Offer Ends November 22!..Come in Today or Call SP 3-6686