

PLAY "CROSS-OUT" WITH SAFEWAY WIN 6,000 PRIZES . . . WORTH \$60,000

HERE IT IS FOLKS . . . YOUR GAME NO. 6

It's fun . . . it's just like bingo. Here are a few of the valuable prizes: Mink Stoles, R.C.A. Color TV Sets, Westinghouse Dryers, 2-Skin Mink Scarves and orchids, Gruen Watches, Hammond Illuminated Globes, 4-piece Hellite Cookware, Seth Thomas Clocks and many, many other prizes.

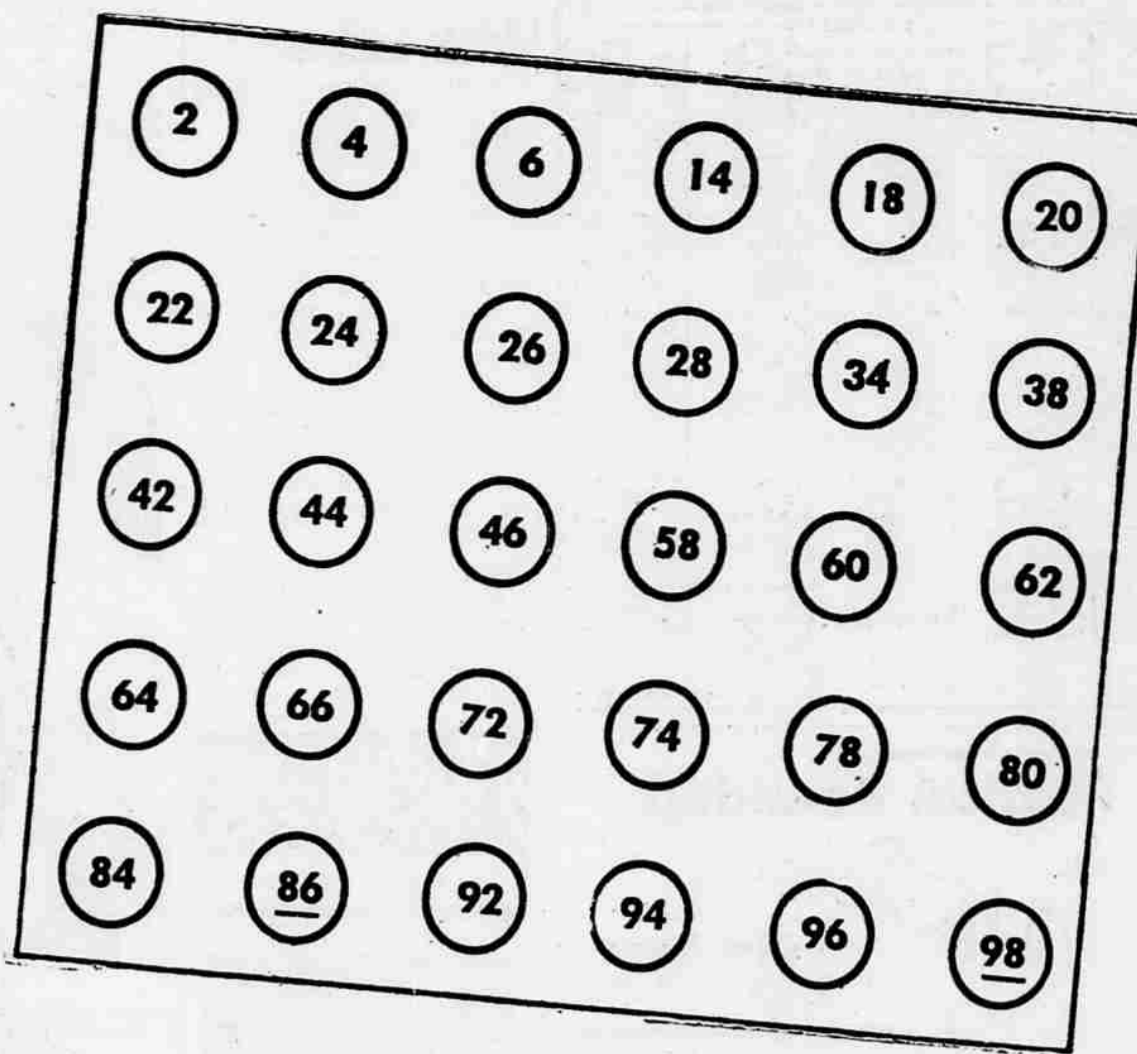
JUST FOLLOW THESE SIMPLE RULES

Check the numbers in the box above with those appearing on your cards. If you have 5 of these numbers, on any one card, in a straight line . . . down, across or diagonally . . . you are a winner. Now, simply follow the rules you'll find printed on your card.

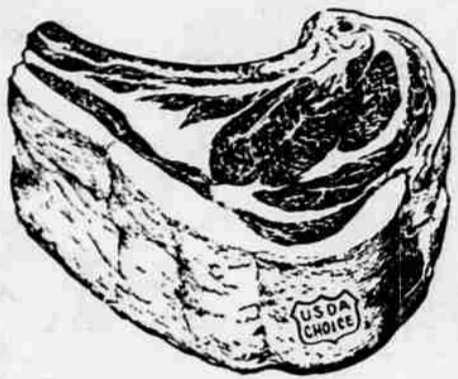
Anyone over 18 years of age, except Safeway employees and members of their immediate family, can play "CROSS-OUT." Ask for your free card each time you visit your Safeway store. No purchase or other obligation is required.

If you do not have a winner this week, KEEP YOUR CARD! You can play it again and again against new sets of numbers that will appear in our ads for the next 11 weeks. All cards can be played for 12 weeks against ANY set of numbers we advertise.

We reserve the right to correct any typographical or other error or errors which might appear in any published matter in connection with this game and to reject winning cards not obtained through legitimate channels.



Look at this special savings on "USDA CHOICE" STANDING RIB ROAST



This cut includes the 10th thru 12th ribs which means more good eating beef with less bone. Every cut is close trimmed before weighing . . . and is scientifically "aged" for extra flavor and tenderness.

The 8th and 9th ribs of standing cuts are well aged so you taste its full natural tenderness and flavor. Close trimming before weighing saves you money. And each cut is fully guaranteed or every cent will be refunded.

Small End **75¢** lb. Large End **69¢** lb. **lb. 89¢**

BAR S BONELESS HAMS

Fully cooked Holiday Hams tenderized and defatted. 8 to 10 lbs. avg. Whole or Full Half

Tender-sweet meat FRESH FRYERS

Delicious Pan Ready fryers plum with plenty of good eating meat. Lb. **35¢**
From 2 to 2 3/4 lbs.

Fresh Cut Up From 2 to 2 3/4 lbs. Lb. **45¢**

Cut Up Fryers Manor House Frozen 2 to 2 3/4 lbs. Lb. **45¢**

Ground Beef Bologna Large Franks Sliced Bacon

Made from fresh lean beef 100% pure—3 lbs. \$1.59

Delicious large size Piece Lb. **45¢**

A real buy on Old Fashioned Franks

Fully smoker standard layer pack

Tender "US CHOICE" Beef LOCKER BEEF

Safeway cuts and wraps all locker beef FREE

Front Quarter Lb. **43¢**

Square Cut Chucks Lb. **55¢**

Full Sides Beef Lb. **49¢**

Hindquarters Lb. **59¢**

Trimmed Loins Lb. **95¢**

Full flavored Safeway sliced LUNCHEON MEATS

Your choice of cooked salami, olive, luxury and combination loaf 8-oz. pkg. **39¢**

Captain's Choice Halibut Steaks Quick-frozen Lb. **75¢**

Manor House Frozen Tuna, Chicken, Turkey & Beef 8-oz. pies **29¢**

Pork Spare Ribs up to 3-lbs. Lb. **59¢**

Hey Kids! Come to Safeway for your FREE HALLOWEEN MASKS

Here's a special Halloween offer on attractive masks to be given with each quart of delicious

LUCERNE ORANGE DRINK
Each Full Quart 17c 3 Full Quarts 50c **2 Full qts. 33¢**

Lucerne the Finest "Prize Winning" COTTAGE CHEESE

In 3 delicious varieties, creamy large curd, Farmer style, small curd and Farmer style with chives. Make wonderful Halloween salads with Lucerne . . . it's the finest.

Free! Reg. 39c Plastic Refrigerator Dish filled with 4-lbs. of Farmer style cottage cheese. Both for **98c** Full Pint **25¢** Full Qt. **49¢**

Shop Safeway for the World's Finest Coffees

NOB HILL COFFEE

Here's coffee that tastes as good as it smells. 1-lb. bag **80¢** 2-lb. bag **\$1.59**

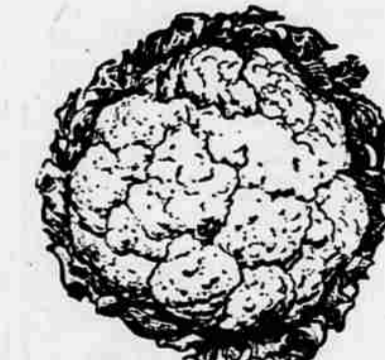
Full, rich flavor Edwards Coffee 4-lb. **\$3.29** 1-lb. tin **83¢** 2-lb. tin **\$1.65**

Airway Coffee Mild and mellow Blend 1-lb. tin **78¢** 2-lb. tin **\$1.55**

See how you save at Safeway on

MAYONNAISE

Nu Made brand Piedmont Full Quarts **55¢** 2 Full Quarts **\$1.00**



CAULIFLOWER

Snowy White . . . Excellent Quality

Superb compact heads. Fresh from the local growing area. You'll want several of these beautiful heads of cauliflower that are featured this weekend at Safeway. Every one is full guaranteed to please you or your money back.

Lb. **9¢**

Crisp Carrots Grand for slicing or with stews 3 lbs. **25¢**
Sweet Potatoes Great when candied 2 lbs. **29¢**
Yellow Onions Mild mediums 3 lbs. **25¢**

No. 1 Potatoes

Hand picked and hand graded

Economy Russets Russets 10-lb. Bag **39¢** 25-lb. Bag **79¢**



Extra fancy beauties. Grand for your Halloween Festivities.

RED DELICIOUS

School boys 4-lb. bag **49¢** Large Size lb. **15¢** Large Size 23-lb. box **\$2.89**

Extra fancy all-purpose 23-lb. box **\$2.19**
Red Romes Lb. **10¢**
Delicious all-purpose School boy size 4-lb. poly bag **39¢**
Jonathans

Prices in this advertisement are effective thru Saturday, November 1st at Safeway in Medford. We reserve the right to limit.



SAFEWAY

Question Answered By Porter on Bills In 85th Congress

Republican congressman candidate Paul Geddes this week asked, and his Democratic opponent, Charles O. Porter answered, a question as to the success of bills Porter had sponsored or signed in the 85th congress. Geddes' query, contained in a press release and phrased as a "challenge," was in the same mail with just such a list mailed to the Mail Tribune by Porter.

Geddes has charged that only 2 of 76 bills introduced by Porter had been passed. Porter has countered that more than 20 which he introduced, co-sponsored, or sponsored passed in some form.

List of Bills

"If Mr. Porter's claim is valid, all he has to do is list the bills by their reference numbers and the numbers of the public laws which they became . . ." Geddes said.

Porter's list showed the following bills passed, which he sponsored, or which contained provisions as in his bills:

Siuslaw river bill, Public Law 85-500; Korean orphans bill, P.L. 85-316; Access roads bill (H.R. 4617) included in other legislation; Civil Service retirement bill, P.L. 85-465; Housing bill, became housing act of 1958; National Outdoor Recreational Review commission, Public Law 85-470; Transportation tax bill, P.L. 85-475; Arizona Memorial bill, P.L. 85-344; Disaster Loans for small business, passed both houses, vetoed by president; Postal classification on educational and cultural material, P.L. 85-426; National scholarship bill, objective included in Public Law 85-864; Equipment maintenance allowance for railroads, P.L. 85-399; Documentary stamp tax, included in P.L. 85-859; Waldo Lake tunnel bill, P.L. 85-820; Oregon Centennial, P.L. 85-317; second postal pay bill, P.L. 85-426; federal pay bill, P.L. 85-462; Forest highway appropriation, P.L. 85-381; Bribes and kickbacks bill, P.L. 85-868; social security legislation, 85-840; Rogue land exchange bill, P.L. 85-833.

Porter As Sponsor
In addition to these 21 measures, some of which were finally enacted with Porter's name attached as a sponsor, and some of which achieved

LaGrande—UPI—Reed Taylor of La Grande has been named Eastern Oregon "Cattleman of the Year" for 1958.

passage through similar legislation, 13 other measures were listed as having received some action in one or both houses. Several others were introduced to speed up federal agency reports, and still others to point up a need, a frequent practice in congress. At least two covered situations which were resolved by later executive department action.

Porter's list indicated that the average of bills introduced by a house member was 36 during the 85th congress, and the average for a senator was 51.

In the house, 15,660 bills were introduced during the two year session.

GET BEHIND A WINNING REPUBLICAN TEAM!

A single vote could swing control of Congress or the State Legislature to the Republican Party. Cast your ballot for the GOP team that will support sane, sound and logical proposals for the good of all the people. Vote for every member of the team from the Courthouse to Congress.

GIVE IKE

A Working, Helpful
Congressional
TEAM

ELECT . . .

WALTER NORBLAD
PAUL GEDDES
JOHN JOHNSTON
MARION WEATHERFORD

. . . .

For Governor
Republican

MARK HATFIELD
He deserves support of a helpful
Republican Legislature

ELECT

For Senate
DR. EDWIN R. DURNO

For Representative
MELVIN J. LATTIE
EVELYN NYE

THEY'LL MAINTAIN
NECESSARY STATE SERVICES
AT THE LOWEST POSSIBLE
COST TO TAXPAYERS

ELECTION OF A MAJORITY
OF REPUBLICAN
LEGISLATORS IS VITAL
TO GOOD GOVERNMENT.

. . . .

LYLE MCGAULEY
Is Your Qualified
Candidate for
Labor Commissioner

. . . .

PUT CAPABLE
REPUBLICANS
TO WORK FOR ALL
OF THE PEOPLE
IN THE COUNTY
COURTHOUSE

CAST YOUR BALLOT
FOR

EFFICIENCY
ECONOMY
COURTESY
IN GOVERNMENT

LOOK AT YOUR
TAX STATEMENT
AND THEN VOTE
REPUBLICAN

Soft and Slimming



9374 SIZES 14 1/2-24 1/2
by Marjorie Martin

The dress you'll wear most this fall and winter—love its soft, scalloped detailing and slimming lines. Designed especially for the short, fuller figure—no alteration problems.

Printed Pattern 9374; Half Sizes 14 1/2, 16 1/2, 18 1/2, 20 1/2, 22 1/2, 24 1/2. Size 16 1/2 requires 4 yards 39-inch fabric. Printed directions on each pattern part. Easier, accurate. Send FIFTY CENTS (coins) for this pattern—add 10 cents for each pattern if you wish 1st-class mailing. Send to Marjorie Martin, Medford Mail Tribune, Pattern Dept., 232 West 18th st., New York 11, N.Y. Print plainly NAME, ADDRESS with SIZE and STYLE NUMBER.

Paid Adv., Republican State Central Comm., 519 Court St., Salem, Ore.