

Farm Project Fits Into Family Farm

Central Point — The farm project of Dave Foote, sophomore in vocational education at Crater high school is designed to fit into the family dairy farm operation.

Dave's family owns a dairy farm of 50 acres, two miles out on Scenic ave., Central Point. Total dairy herd includes 50 milking cows and 11 or 12 calves.

The Foote family apparently

believes in variety in dairy animals. Dave has seven head of Jerseys, his sister is raising Guernseys and his dad Holsteins.

These Future Farmers of America farm projects aren't cheap. And Dave's is no exception. He figures he has \$750 invested in dairy animals. Besides his cows he has approximately \$450 invested in swine.

The younger farmer has specialized in Yorkshire swine. He has four head, one boar, a gilt and two sows, plus quite a few little pigs. Yorkshires are best Dave figures since the market trends now indicate a bacon-type of hog is more popular. Not quite so much waste with this breed, he said.

The young Central Pointer figures the hogs will fill in for his dairy enterprise. When dairying profits hit a new low the sale of hogs should bolster the farm economy, Dave said. This, he said, is good coordination.

Dave started with a dairy herd—building it up gradually. His father gave him one cow to start with. Hard work and several loans from the bank did the rest.

Dave couldn't explain exactly why he likes Jerseys above all other breeds. A Jersey is just a good cow, he said.

While in 4-H work he exhibited cows at the county fairs, but never in the state fair. He did take his hogs to the state fair, however.

"FFA has helped a lot with technical advice in my farming," the young farmer said. "This covers proper grain ration, bedding a budget and other helps."

Dave's steady, persistent growth in student farming proves this. He has paid his father back for the initial investment. He is extending his interest to farm crops, also.

Farm and Garden



DISCS GROUND — Carl Simmons, senior in vocational agriculture in Crater high school, Central Point, slices through the earth with a row of discs on the back of

the Crater Future Farmers of America chapter tractor. The work was being done recently in the vo-ag farm plot near the high school.

Meat Information School Slated

Professional people who service consumers with meat information and want to know more about meat are invited to a meat information school at Klamath Falls, Oregon, Thursday, Oct. 23 at the fairgrounds lecture room.

According to Mary Pat Lucy, according to Mary Pat Lucy, Jackson county extension agent, local arrangements chairman, the school begins at 7 p.m. and ends at 10 p.m.

William Robichaud, expert from the national livestock and meat board, will conduct the school assisted by Dorothy M. Sherrill, Oregon State college extension service. Robichaud will show how to get several cuts from one cut of meat, demonstrate attractive ways of cooking, serving and carving, and offer money-saving ideas that can be passed onto consumers.

All home economists, retailers, restaurant operators, chefs, and teachers who are interested in attending the school can get more information from Jackson County Extension office, by phoning SP 3-6211, extension 211.

Bluetongue Hits Lakeview Sheep

Salem — An outbreak of bluetongue was reported in a flock of sheep near Lakeview last week, according to the state department of agriculture.

The flock has been quarantined and the area is under close observation to prevent spread.

The first heavy frost will kill the biting insects which transmit the virus disease. Frosts are long past due in the Lakeview area.

--- CHIT CHAT ---

By JOE G. COWLEY
Mail Tribune Farm Editor

The question of a possible rise in milk prices for the Rogue valley area will depend on the outcome of reports by Portland area dairymen committees on Nov. 1.

Then reports should be ready from three committees appointed by Dick Westerberg, Ashland, president of the Oregon Milk Producers. The committees were appointed during a meeting Saturday in Portland of 354 OMP members who serve the Portland milk shed.

Then the group asked for a price increase of approximately a cent a quart from about 17 Portland milk processors and distributors.

However, whether a price boost will be made depends on the processors and distributors. To answer all arguments of these middlemen the OMP committees will be making a survey of market milk usage, will work on public relations and the third committee will be planning strategy.

During the meeting, Lester Adams, Applegate, and secretary of the OMP, explained the rise in price is needed because of increased production costs and because dealers cut the price to producers June 1 due to increased labor costs. The price cut to producers was 23 cents a hundred-weight. The proposed increase would be 46 cents a hundred-weight. It would bring the producer price up from 12.8 cents a quart to 13.7 cents.

The last retail milk price hike in the Portland area was in February, 1957. The current price to consumers for a home-delivered quart of standard test milk is 25 cents.

This milk price increase forecast is nothing new. On Sept. 4 on this page we carried a story that milk may increase one cent per quart throughout the state—not just in the Portland area.

Then we explained that many dairymen were already feeding hay when ordinarily hay is never fed until October. September is considered a "pretty good month in payouts." It's the beginning of the period of less milk when the dairyman gets more of the milk in bottle and can. He isn't forced to produce much surplus, it was explained.

"I think that the damage has been done already to the pastures and the cows have dropped materially in production," Adams said then. "I can see no hope for a more favorable situation sooner than spring."

A survey of milk producers' costs was almost complete then. Now, we understand, the finishing touches are being put on the survey. We hope to have it for publication soon. Earlier survey results, which were not quite conclusive, showed 46 per cent of the total cost is charged up to feed. The dairyman is faced with an average increase of a dollar a ton for hay.

From Eugene south the labor costs have risen 4 per cent. This accounts for 21 per cent of the total cost. This means then, in at least 67 per cent of the dairyman's cost picture, costs have definitely gone up. Figuring all costs 100 pounds of 4 per cent milk brings actual production costs of \$5.89.

Those people working on milk promotion in this area might follow the example of an Alaskan dairy. It prints oil lease certificates on the sides of milk cartons, according to Food Engineering. Twenty-five such cartons certificates entitle the bearer to a ten-thousandth interest in a genuine oil-producing area.

We usually avoid getting even a little involved in politics in this column. However, during an election year and with the farm issues a vital part of the current campaign it is hard not to. We are somewhat in the position of the wealthy society matron who invited a notorious jewel thief to her party for "color." Asked if she wasn't risking notoriety for her party she replied, "Oh no, he always wears gloves."

It's interesting to note that the Farm Bureau gives incumbent Republican Senators a large lead over their Democratic colleagues following a study of Senate voting records. This study was distributed to all Farm Bureau members in the 48 states. The report merely listed the votes of all incumbent senators on 13 measures chosen as key issues.

A tabulation of such votes on farm issues shows that of 14 incumbent Republican senators running for re-election, 12 had favorable voting records and only two had unfavorable records, according to the FB's viewpoint.

However, of 13 incumbent Democrats running for re-election six had favorable records while seven voted against Farm Bureau advice more than they followed the organization's policy.

It should be pointed out that the FB usually backs Administration agriculture policy. Also, the issues which the FB listed were not restricted to votes on farm bills. Such issues included votes on reciprocal trade, labor law changes, states rights, federal aid to education.

To achieve a perfect rating from the FB, a senator in the 85th Congress would have voted this way:

Against bills freezing farm price supports, for labor bills granting states more authority over unions, and banning secondary boycotts, against federal aid to education and additional school construction funds, against restrictions on reciprocal trade, and against several Democratic backed measures aimed at boosting farm price supports or restricting support cuts.

The Oregon senator's names did not appear in the report as being in the majority against the FB farm issues or in the majority for them. Only one senator had a perfect score and that was Sen. Roman L. Hruska, Nevada Republican.

Crater FFA Chapter Rates High In State, Nationally

Central Point — Crater Future Farmers of America chapter at Crater high school, Central Point has a state master chapter rating and will receive a bronze plaque for its national standing, according to Ed Griggs, vocational agriculture instructor and chapter advisor.

Griggs was notified this week that his chapter is among those given a third place rating in the nation and will receive the bronze award. First place award is gold, second place silver and third place bronze.

The award rating is based on the activities the FFA chapter members engage in, leadership and how the chapter is rated in various FFA competitions, community service and cooperative activities.

The Crater chapter was state champion last year in public speaking, second in the state in parliamentary procedure contest, it has its own chapter farm and tractor and the chapter members have a combined investment of \$46,000 in agricultural projects.

The Crater put on 17 radio programs and two television shows. Sixty-five of the chapter members have FFA jackets which also helped it to place high in the competition.

Crater FFA chapter is the second largest in the state and has 98 members. Mollala chapter by Portland is the largest. The chapter has a 15-acre farm plot adjacent to the high school. Ten acres is in barley and five acres in in alta fescue.

Two chapters are chosen each year to represent Oregon in the national competition. This year it was Canby and Crater. Applications are submitted to the state vocational-agriculture office in July and the chapters are selected according to their records.

The chapter owns approximately \$3,000 worth of farm equipment which includes a tractor, plow, disc, new mowing machine and a blade.

This is the beginning of the third year for advisor and vo-ag instructor Ed Griggs and his assistant Bill McFarland.

Griggs graduated from Oregon State college in 1949, spent five years in Half Way in eastern Oregon and two years in the feed department of the Quaker Oats company.

Spray Roses Now, Homeowners Told

Homeowners should spray roses now for black stem canker, Clifford B. Cordy, county agent, reported today. The disease, one of the most serious in roses, causes the stem to turn black which makes the buds wither and die in the spring.

He explained the bushes should be sprayed with a solution of one-quarter pound of neutral copper in three gallons of water mixed with a little spreader. This spray should be repeated in the spring, following pruning to cover the cuts and young shoots, he added.

He also commented on the yellowish rust that may be found in area lawns. He said that the rust will come off onto the shoes when a person walks through the grass.

Cordy said that the current favorable weather conditions cause the rust to appear and homeowners should ignore it. The rust spots should clear up as soon as it starts to frost, he stated, and chances are that it will not reappear in the spring.

Three 4-H Members Named To Awards

Two girls and a boy have been selected for leadership and citizenship honors in the national 4-H awards program in Jackson County, according to Marilyn Garner, county 4-H agent for home-economics.

Philip Krouse, son of Mr. and Mrs. Francis Krouse, Applegate, and Carol von der Hellen, daughter of Mr. and Mrs. R. B. von der Hellen, Central Point, received citizenship recognition recently from Thomas E. Wilson, Chicago, Ill., donor.

Susan Wright, daughter of Melvin O. Wright, Medford, is the recipient of a county medal for outstanding leadership ability. This award was donated by Edward Foss Wilson, Chicago, Ill.

"Susan Wright, throughout her seven years of club work, has exhibited the qualities which have enabled her to be a real leader of younger club members in her community of Oak Grove," according to Miss Garner.

"Her projects have included beef, sheep, horse, outdoor cooking, and junior leadership projects. As a junior leader, Susan has been able to help her fellow members in the Oak Grove Woolies sheep club to assume a more responsible role as club members. This year Susan is attending California Polytechnic at San Luis Obispo, Calif.

She is enrolled in the agricultural curriculum," the 4-H agent said.

Philip Krouse has actively participated in the Applegate 4-H club and community to demonstrate his citizenship, Miss Garner said.

Philip has established a sizeable flock of sheep during his eight years of 4-H club work and through his contacts with other club members as a junior leader stimulated them to greater interest and activity. Philip extended his 4-H interest beyond the local area. He was elected vice-president of the Jackson county 4-H teen-age council this past year. Philip is credited also with beef, swine and tractor projects.

"Miss von der Hellen has done outstanding 4-H club work in both home economics and agricultural projects throughout the last five years of her membership," Miss Garner said.

"Serving as president of the Central Point-West Side general 4-H club, Carol has shown her ability to lead in a community larger than those of her local project clubs. In 1958, her interest spread beyond her regular project work in foods, food preservation, beef and dairy to serve as a junior leader in the Central Point Beef club," the 4-H agent concluded.

Western Oregon Livestock Meeting Set Nov. 12-14

Corvallis — Livestock producers from 14 western Oregon counties will convene Nov. 12 to 14 at West Linn for the 23rd annual meeting of the Western Oregon Livestock association.

Morning committee sessions will open the three-day meeting with the first general assembly at 1:15 p.m. at the West Linn hotel, according to Dean Frischknecht, Oregon State college extension livestock specialist and association secretary.

Walter Shumway, a McMinnville rancher, is association president. Committee sessions are slated for legislation and taxation, marketing, wildlife, range and pasture, livestock diseases and parasites, and resolutions. The association is comprised of 14 county livestock associations and represents beef, sheep, and swine producers.

Key speakers will include Dr. J. C. Miller, new head of the OSC department of dairy and animal husbandry, who will report his recent impressions of the livestock industry in Europe.

Walter Holt, Portland, general manager of Pacific International Livestock Exposition, will discuss plans for the Oregon Centennial; and Richard J. Nolan, San Francisco, western representative of the National Livestock and Meat Board, will review the 1959 nationwide meat promotion program.

Another program highlight is a panel discussion on livestock feedlot operations, moderated by Hubert Willoughby, Harrisburg farmer. Panel members will be Phil Cohn, Monroe and Hermiston sheepman; Charlie Lucht, Mollala swine grower; Neil Thompson, Canby cattleman; and George Cadmus, Salem, bank fieldman.

Association officers for 1959 will be elected Nov. 13.

Eight Counties Yet Non-Certified Continue Testing Potatoes Fatten Yearling Steers

Salem — Dairy and range herds are being bled tested for brucellosis in eight of the nine remaining Oregon counties scheduled to reach certification next June, the state department of agriculture reported.

The remaining range cattle will be tested during the winter months under the cooperative federal-state disease control program. Only one herd must be tested in order to certify Wheeler county, reported Dr. A. G. Beagle, federal veterinarian in charge of Oregon.

During September 982 herds containing 7,824 cattle were bled tested in Oregon. This disclosed 52 reactors for a percentage of 0.664. An estimated 28,080 cattle were tested through the milk ring tests given to 1,387 herds. Forty-four suspicious herds were disclosed and bled tested as a result of the milk ring tests.

1,855 Calves Vaccinated
Vaccinations were given to 1,855 calves of 42 herds; 44 per cent of these were given in Coos, Tillamook and Washington counties.

Only one reactor was discovered in the 471 herds containing 4,106 cattle tested for tuberculosis.

Seven cases of sleeping sickness (encephalomyelitis) were reported in Oregon horses including two each in Jefferson and Jackson counties and one each in Douglas, Lane and Malheur.

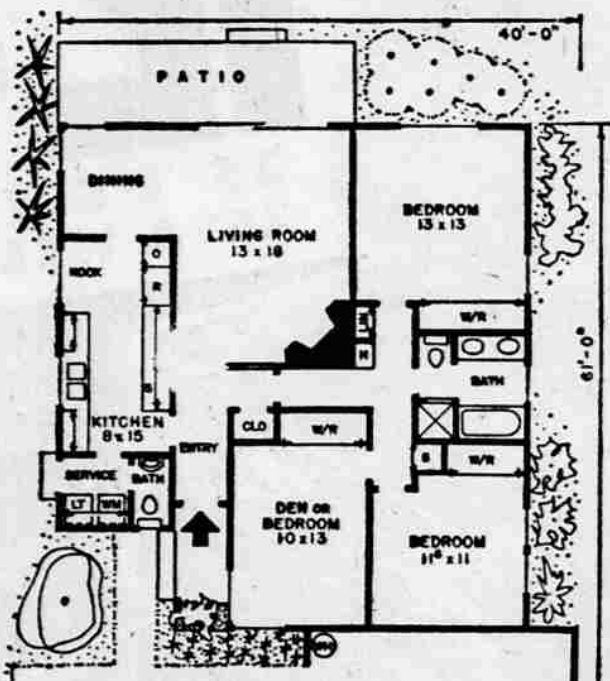
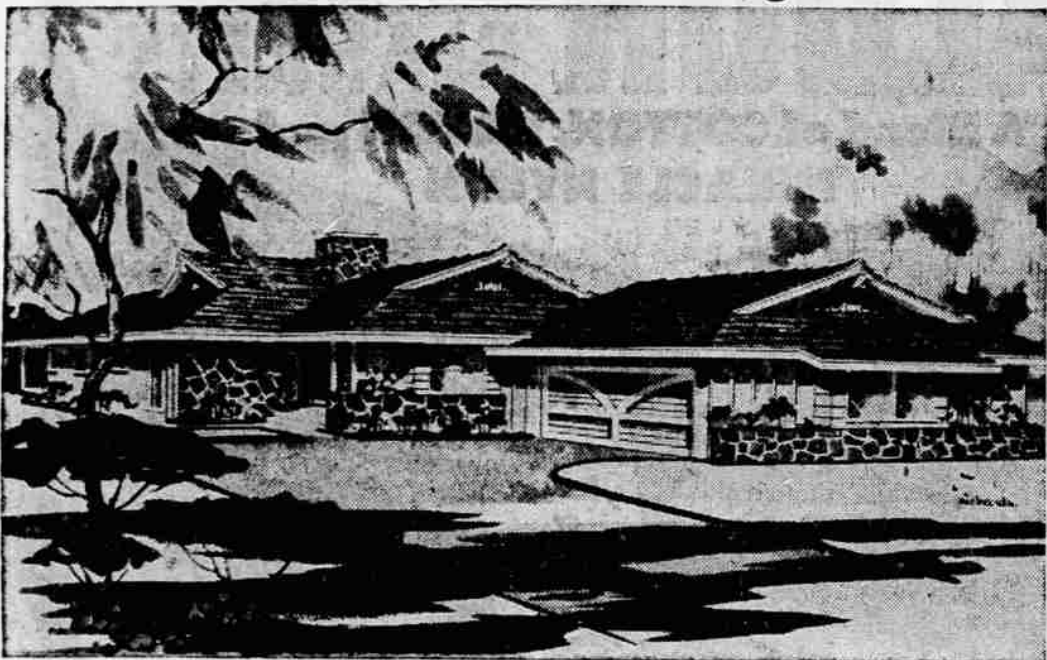
The Oregon Supreme Court listened to arguments Oct. 16 in connection with the suit brought by some eastern Oregon ranchers to test the constitutionality of the 1957 brucellosis law.

Complete list on request.

FERNHOPPER FOREST NURSERIES

Rt. 2, Box 369 Eugene, Ore.

This Week's Home for Living



Belying its spacious appearance, this 1280 square foot home can be built on a 50 foot lot. Its three bedrooms, two baths and efficiently planned living space make it unusually comfortable to live in and easy to care for.

All rooms radiate from the basic center hall plan. For privacy and quiet, the bedrooms are separated from the work and activity zone. A doorway could be located between the entrance hall and the front bedroom to make this room into an office, if preferred. Wide, space-saving wardrobes have sliding doors for easy access, and shelves above.

The master bath contains both tub and stall shower. Twin lavatories have storage underneath for towels and supplies.

Glass doors to the patio open the big living room and expand the activity area for sun bathing, outdoor meals and entertaining. In warm weather the wide rear patio will be as much a part of your living room as the pleasant interior.

The dining alcove can be left open to the living room or refined with movable room dividers.

Convenient for quick family meals is the well-lighted eating area in the kitchen. Ample cupboards and built-in kitchen appliances are arranged for step-saving efficiency. Washer and dryer are located in the service area. The half-bath is handy to both the work area and play yard.

An oversize 21 ft. by 21 ft. outside dimensions, garage

will provide adequate parking for today's larger cars. Storage place and workshop space is still available along one wall of the garage.

A compact gravity furnace is centrally located in the bedroom hall. Natural stone adds rustic contrast to the painted wood siding. The gables of the shake roof tilt upward above jutting beams and diamond window panes add a quaint note.

Complete working drawing of the above plan can be obtained at a cost of \$1.50 for the first set and \$3 for each additional set when ordered at the same time. This plan will be available for a period of four months from this date. Please allow two weeks for delivery. If the above home does not entirely meet with your satisfaction, a new home plan book, Homes for Living, may be purchased for \$1. Send all orders for either plans or books to Hiawatha Estes, P. O. Box 404-T, Northridge, Calif.



DR. WILLIAM SEARLES Supervises Meat Inspection

New Supervisor Meat Inspection Field Activities

Salem — Dr. William L. Searles, 33, is now directing field activities of state meat inspection by appointment as acting supervisor. He succeeds Dr. R. C. Sexauer, now supervising federal meat grading on the east coast.

Dr. Searles has been with the state department of agriculture meat inspection staff for 14 months. Until the promotion to the headquarters staff, he was veterinary meat inspector for the Ontario district.

The record Dr. Searles made in the Ontario area merited his selection to the supervisory post, stated Robert J. Steward, director of agriculture. He explained that provisional status for a period is customary under state civil service in promotions of this nature.

Holds Three Degrees
Dr. Searles holds three degrees from the University of Illinois, receiving his DVM degree in 1954. He spent the following year in meat inspection and disease control under the Illinois state veterinarian.

This experience included meat inspection at the Chicago Union Stockyards. He also holds a B.S. degree in agriculture, and did graduate work at U.I. and was on the dairy science staff there before entering veterinary college where he earned his second B.S. degree, this time in veterinary science.

Prior to coming to Oregon, he operated his own animal hospital in Chicago. He served in the Navy from 1943 to 1946 and was an Air Force instructor in 1951-52.

Dr. and Mrs. Searles are already located in Salem.

Pencil manufacturers in Pakistan use juniper wood, known there as pencil cedar.

MONEY

At Crater Finance you may borrow for any worthwhile purpose on your FURNITURE — AUTO SALARY

and repay in monthly installments. You may choose the terms most suitable to you — up to 24 months.

Loans may be paid in advance or in full at any time.

Crater Finance CORPORATION

135 Pine Street
Central Point
Phone NO 4-1273

Frank Wilkinson, Mgr.
Convenient Parking

BRILL
METAL WORKS
Commercial — Industrial
Residential Sheet Metal Work
Stainless, Galvanized
and Copper Fabrication
2287 West Main
PHONE SP 2-4440



"I'M CARRYING ON"

ELIYAH SIMON cabled United Press International, when his older brother, U.P.I. correspondent in what then was Palestine, died suddenly during World War II.

Simon has carried on ever since—brilliantly and with an impartiality all sides have praised—to cover the big news that the little country of Israel has made.

For the best-informed news—and what's back of it—from the eye of the Middle Eastern hurricane, read Simon's latest United Press International dispatches, in

Medford Mail Tribune