

# Sleeping Sickness, With Fever, Said Description of Oregon Election Race

By DICK HUMPHREY  
UPI Correspondent  
Salem —UPI— A competent doctor might diagnose Oregon's political ailment as encephalitis lethargica — sleeping sickness.

But lately the disease has been complicated by a fever, caused mostly by name-calling, which has roused the public to the fact that the general elections are less than three weeks off.

Democratic Gov. Robert D. Holmes, who two years ago became the first Democratic chief executive in 20 years, ruffled feathers with a speech in which he deplored the political use of religion.

At the time of the speech, Republican Candidate Mark Hatfield, Oregon secretary of state since 1956, was addressing a Sunday school convention in Des Moines, Iowa.

Hatfield deplored the statement as a "vicious" attack. Holmes denied he had imputed Hatfield's religious convictions.

### Major Issue Listed

A major issue raised by Hatfield has been his charge that Holmes has lacked respect for law. He has cited the governor's commutations of death sentences without new evidence, and Holmes' statement that a statute obliging

the chief executive to visit each state institution in western Oregon was "ridiculous."

Holmes, on the other hand, has accused Hatfield of being "80 per cent inefficient" in his job as secretary of state. The governor added in a speech this week that "the truth of the matter is, he hasn't much to do" except to inspect state buildings in his role as custodian. Holmes said a Republican Legislature had stripped the secretary of state of many duties when the GOP thought a Democrat would win the office in 1958.

Hatfield said recently: "What kind of law and order would we have if you said that you would not stop at a stop sign because you did not feel that it was in a good position? This is the vital, fundamental difference between the other candidate and myself."

Both Hatfield, 36, and Holmes, 46, come to the Nov. 4 test with excellent records of public service in the

### Legislature.

### Other Similarities

Both men share an avid interest in education and in the development of the state.

Both favor such ballot propositions as county home rule and a vote of the people on abolition of capital punishment.

Both oppose a sales tax but propose an overhauling of Oregon's tax structure to make it more attractive to business. The governor has an independent study of the state's tax structure under way.

Both favor "full power development" with Holmes giving his support to a regional power corporation and Hatfield giving qualified support providing there is adequate regional control and local deter-

mination of the method of distribution.

Sen. Wayne Morse (D-Ore.) jumped into the fray by claiming that Hatfield was the "fair-haired boy" of private power interests, but Hatfield denied it.

And so it goes. Voter registration in the May primary election gave Democrats an edge of 430,137 to 387,453 in what traditionally has been a Republican state. Final figures for the general election are expected about Oct. 20.

In congressional races, Democrats polled more votes in the 2nd, 3rd and 4th district primaries, but Republicans led in the 1st district. The latter district is where U.S. Rep. Walter Norblad (R-Ore.), a veteran of seven terms in Congress, will face possibly his toughest fight to date with Democratic Attorney General Robert Y. Thornton. However, their campaign has been confined mostly so far to occasional swipes at each other's competency.

U.S. Rep. Charles O. Porter, Eugene lawyer who was elected in 1956, faces Republican opposition in the 4th district from Paul E. Geddes, a Roseburg lawyer who served four sessions in the state Legislature and has been a member

of the Interstate Cooperation Commission for three years.

Weatherford Opposes Ullman Democratic U.S. Reps. Al Ullman, Baker, 2nd district, and Edith Green, Portland, 3rd district, face Republicans who are new to the big political arena.

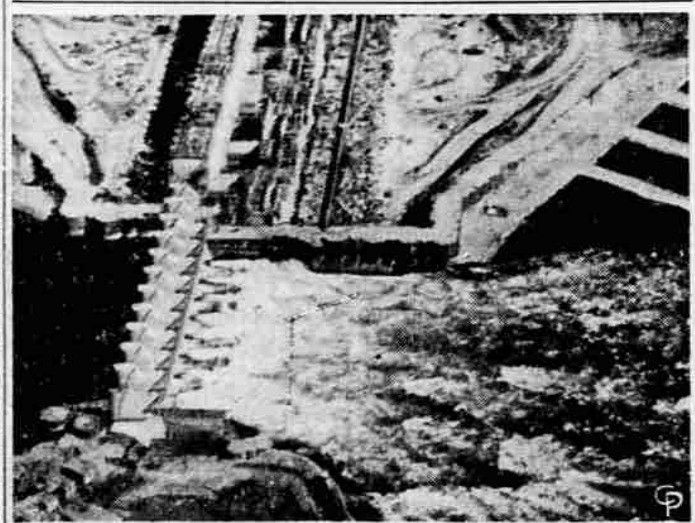
Ullman's opponent is Marion T. Weatherford, an Arlington wheat farmer and banker who is now president of the Pacific Northwest Grain and Grain Products Association.

Mrs. Green, four years in Congress, faces John Johnston, Portland, a naval officer and former Portland businessman who performed military duties in the Pentagon. The only other major race is for labor commissioner, a position occupied for four

years by Democrat Norman O. Nilsen, Portland. Republican Lyle E. McCauley, Salem Republican and a professional labor conciliator seeks the post.

On the state level, Democrats appear to have a good chance of capturing the state Senate which was equally divided between Republicans

and Democrats last session. Republicans have some hope of capturing the House which was controlled by the Democrats last time.



POURING THROUGH SPILLWAYS, Columbia River is being harnessed by Priest Rapids Dam, in Central Washington, now 58 per cent completed. Power house will generate 788,500 kilowatts of power when installation is made.

## MEDFORD MAIL TRIBUNE

2nd SECTION

MEDFORD, OREGON, THURSDAY, OCTOBER 16, 1958

12 Pages



WE GIVE  
S&H  
GREEN  
STAMPS

# GRANDVIEW MARKET

2330 Crater Lake Ave. • Phone SP 2-8188

Store Hours — Week Days, 8:30-8:00. Sundays, 10:00-7:00 — We reserve the right to limit quantities  
These Prices Are Effective Thursday Evening, Friday and Saturday, October 16-17-8

Low, low Prices—PLUS  
**S&H GREEN STAMPS**  
GIVEN ON ALL  
● GROCERY PURCHASES  
● ALL MEAT PURCHASES

**Mayonnaise**  
BEST FOODS  
Quart **59¢**

**FLOUR**  
KITCHEN QUEEN LABEL  
25 Lb. Bag **\$1.89**

**COFFEE**  
BORDEN'S INSTANT  
Large 5-OZ. Jar **89¢**

**WESSON OIL**  
1/2 Gal. Decanter **99¢**

**FEDERAL HI-POWER SHOTGUN SHELLS**  
12 GA. Regular Load Hi-Base **\$2.88** Reg. 3.45  
12 GA. Magnum Load 2 3/4" Hi-Base **\$3.25** Reg. 3.95

**SAVE ON ALL MEATS SAVE S&H GREEN STAMPS**  
BONELESS  
**Pork Roast**  
Or Center Blade Cut  
**Pork Steaks**  
Lean Center Cuts!  
100% Pure Pork  
**SAUSAGE**  
Midwest Corn Fed **49¢ lb.**

**NO FINER PRODUCE ANYWHERE—THAN AT GRANDVIEW MARKET**  
**NEWTOWN APPLES** Local Grown — No. 1 Top Quality Apples. A Terrific Value — Buy Now! **\$1.69** FULL 38-40 lb. BOX  
**CELERY** 13¢ EA. Crisp, Green, Lge. 30 size stalks  
• RUTABAGAS • PARSNIPS • TURNIPS Fresh Clean Peak o' Quality **10¢ lb.**

**Corn Flakes**  
CARNATION—12-oz. Pkg.  
Reg. 26¢ **5 Pkgs. \$1.**

**REAL VALUE HERE!**  
**FINER DETERGENT**  
Giant Pkg. Powder'd **49¢**

**TUNA**  
DUNDEE—REG. 1/2 CAN  
5 CANS Light Meat Grated **\$1.**

**DOG FOOD**  
BONNIE—TALL CANS  
2 CANS **25¢**

**HOT DOGS** Nebergall's Finest With That Old-Fashioned Flavor **39¢ lb.**  
**BACON** GRADE "A" Thick Sliced 2 lbs. **\$1.29**  
**PICNICS** SMOKED REPEAT SPECIAL **39¢ lb.**

**HALIBUT**  
CENTER CUT STEAKS **59¢ lb.**

**OYSTERS**  
FRESH PACIFIC Jar **55¢**

**ADD VARIETY AND ECONOMY TO YOUR MEALS NOW!**

<b>Luncheon LOAF</b> La Corona—12-oz. Cans <b>3 FOR \$1.</b>	<b>MINCED CLAMS</b> Jersey's Best—Lge. 7 1/2 oz. <b>4 CANS \$1.</b>	<b>CORNERED BEEF</b> Real Label—12-oz. Cans <b>39¢ Can Reg. 49¢</b>	<b>OYSTERS</b> Pacific Brand Small Whole Oysters <b>3 CANS \$1.</b>	<b>CHICKEN</b> Dennis Whole A Terrific Hunters' Favorite 3-lb. <b>\$1.19</b> 4-oz. Can <b>1 Ea.</b>
--	---	---	---	--

**SAVE ON OUR HOME FREEZER DEALS!**  
Cut, Double Wrapped — Pick Them Up Anytime

<b>25 lb. Freezer Deal \$14.00</b> 5-LB. RIB AND CLUB STEAK 10-LB. BEEF ROAST & SWISS STEAK 5-LB. GROUND CHUCK 5-LB. RIB STEW	<b>25 lb. Freezer Deal \$19.00</b> 5-LB. T-BONES 10-LB. ROUND STEAK & RUMP ROAST 5-LB. SIRLOIN 5-LB. GROUND ROUND
---	---

FED BEEF ONLY S&H Green Stamps  
**Buy One Each, Save 50 lbs. \$31.95**

**LIPTON'S TEA** 48 Bags **69¢** — 1/4 lb. Pkg. **45¢**