



RETIRING from Supreme Court, Justice Harold H. Burton says poor health is responsible. He was appointed by President Harry S. Truman in 1944.

Power Supplies Seen Adequate

Portland—UPI—Administrator William A. Pearl of the Bonneville Power Administration reported Wednesday that the Pacific Northwest will need no steam generated power in the next four years, even if the Columbia reaches its lowest historical point all four years.

The optimistic prediction of regional power supplies was made by Dr. Pearl at a meeting of the Columbia River Basin Interagency Committee. He said the Pacific Northwest would have no power worries for the next 10 years with steam and imported power, even for the interruptible power used by the metallurgical industry, if there are median river flows.

Dr. Pearl called the power picture "the brightest since I've been at Bonneville."

The administrator reported, however, that a sudden slump in demand for power the past year had forced BPA into the red and its surplus had to be tapped in order to make repayments to the federal government for its construction investments.

The recession, cutbacks of consumption by the aluminum industry, and one of the warmest winters in history caused a sudden reversal of power consumption just as nearly one million kilowatts of new generation was placed on the line from public and private hydroelectric sources.

Holmes-Hatfield Campaign Warms

By United Press International

The gubernatorial campaign between Democratic incumbent Robert D. Holmes and Republican Secretary of State Mark Hatfield was warming up today with election less than four weeks away.

Holmes challenged Hatfield to show where he could make big reductions in state expenditures and how he intends to reduce taxes.

Hatfield called for new progressive and daring leadership in the Republican party and a change in residence requirements for voting so that new residents in a state are not "disenfranchised."

Holmes, speaking at Gresham, said, "I urge my opponent when he talks of tax cuts to say just which schools he intends to close, which teachers he means to fire and what state institutions he intends to starve."

Hatfield spoke at Gill Coliseum in Corvallis Wednesday. He also recommended a "careful look" at lowering of the voting age and suggested a legal requirement for reporting political campaign contributions prior to elections rather than after them.

COINING A NAME

Memphis, Tenn.—UPI—Diane McCullough says she spotted a name tag on another freshman at an all-girl party at Southwestern College here reading: "Penny Nichols Money, Miss."

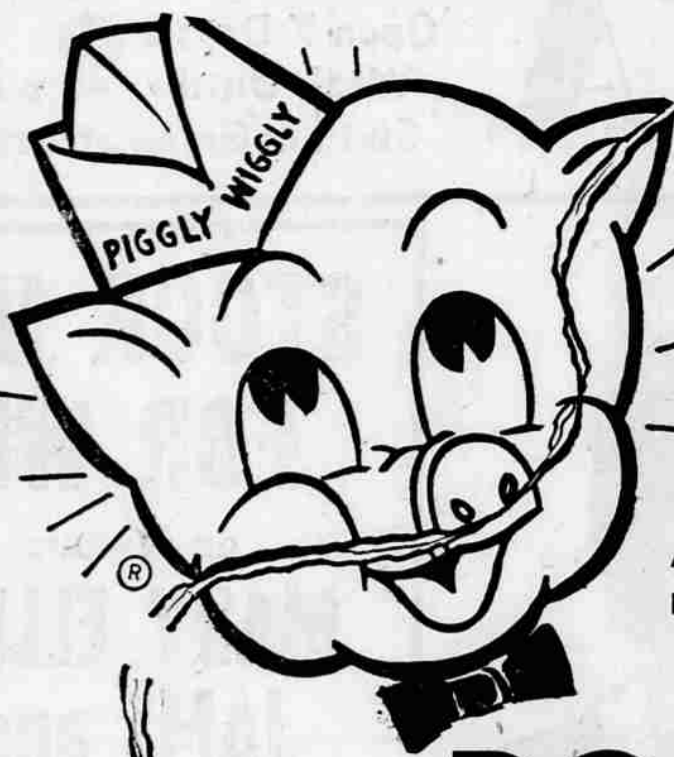
there's only one **SKIPPY**

BEWARE OF IMITATIONS

LOOK FOR THE HAPPY LITTLE PUP

TOPS IN QUALITY!

LOW IN PRICE

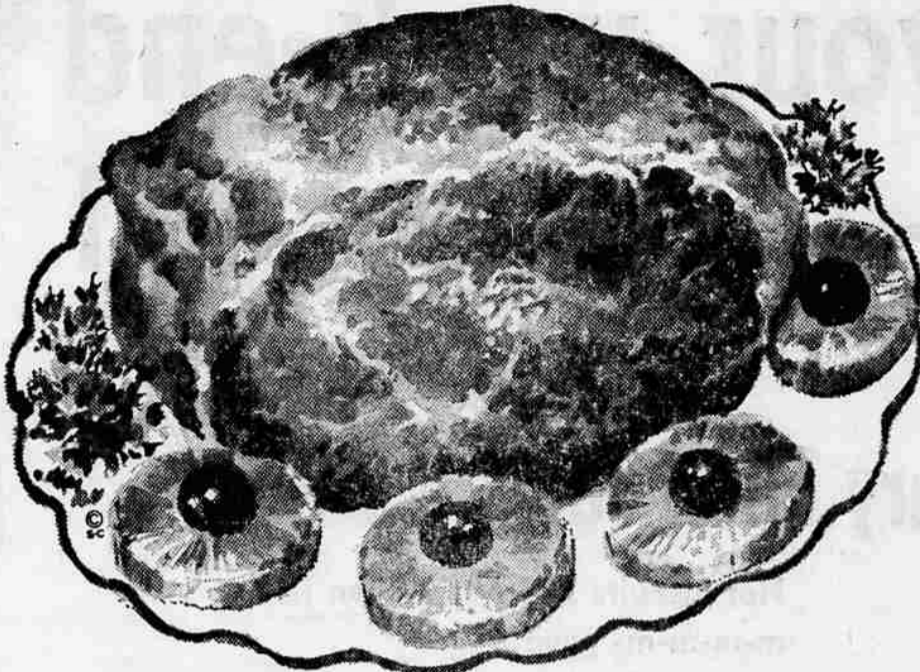


Pork Time

Piggly Wiggly

ALL PRICES EFFECTIVE FRIDAY & SATURDAY!

PORK ROAST



SHOULDER
PICNIC STYLE **39¢** lb.

COUNTRY STYLE **Pork Sausage** lb. **49¢**

- Pork Steak** lb. **49¢**
- Pork Loins** lb. **59¢**
- Spareribs** Country Style lb. **49¢**
- Pork Loin Roasts** lb. **59¢**
- Pork Chops** Center Cut lb. **69¢**

ARMOUR STAR SLICED **BACON** 1-lb. Pkg. Only **59¢**

NALLEY'S WHOLE BANQUET **DILLS** 56-oz. Jar **63¢**

FINER ALL PURPOSE **FLOUR** 25 lb. Print Bag **\$1.79**

MARGARINE PLYMOUTH BRAND **6 lbs. \$1.00**

DUNDEE **PORK and BEANS** REG. 23c Large 2 1/2 Tin **5 for \$1.00**

Nalley's Regular or Hot **Chili Con Carne** WITH BEANS 15-oz. Tins **4 for \$1.00**

FINER EVAPORATED **MILK** 3 tins **43¢** Case of 48.....6.19

ZEE BATHROOM—Reg. 39c 4 Roll Fancy Pak **2 for 69¢**

CHIFFON BATHROOM **TISSUE** 2 Roll Pak **25¢**

Premium Snowflake **Crackers** 2 lb. Pkg. **49¢**

Nabisco Lorna Doone **Cookies** 10 1/2-oz. Pkg. **39¢**

Locally Packed Bartlett **Pears** 3 for **1.00** Large 2 1/2 Tin—Reg. 37c

SPECIAL PURCHASE Of Quality **UMBRELLAS** 10 RIB METAL SHAFT **89¢**

Hoody's Cream Style or Crush **Peanut Butter** **49¢** 16-OZ. JAR

CAULIFLOWER LARGE Snow White HEADS **19¢ each**

NEW CROP CALIF. **Red Yams** **2.19¢** L B S

SWEET—LOCAL GROWN **White Malaga Grapes** 2 lb. **15¢**

Crisp, New Crop Red Delicious or Newtown **APPLES** 4 lb. Cello Bag **37¢**

SPECIAL Hot as a Firecracker! **BONNIE** DOG & CAT FOOD 8 1-lb. tins **89¢**

Low, low prices plus **S&H GREEN STAMPS** at no extra cost!

for Selection—Quality—and Complete Satisfaction...
Shop Piggly Wiggly

MODESS Reg., Super or Teen Age PKG. 12's **45¢** **2 for 89¢**

STEWART AT KING STREETS — OPEN DAILY UNTIL 9 P.M. — LOTS OF FREE PARKING