

Truman Claims Dams In Columbia Basin For The Democrats

Portland—Former President Harry S. Truman claimed Columbia basin dams for the Democratic party here last night and said if he were a Republican leader in the Northwest it would embarrass him to see all the GOP brass coming west to dedicate "our Democratic dams."

A throng of Oregon Democrats paid \$25 each to dine with Mr. Truman during his brief visit to the state to urge a vote for the straight Democratic ticket in the November elections.

'Weak Spot' Noted

Mr. Truman hailed Oregon, a former Republican stronghold, as "one of the leading Democratic states in the country." After a tribute to the state's Democratic congressional delegation and to Gov. Robert D. Holmes, the former chief executive pointed to what he termed "one weak spot in the congressional delegation." He said that could

be remedied by the election of Attorney General Robert Y. Thornton to Congress. Thornton opposes Rep. Walter Norblad (R-Ore.), who is the lone Republican survivor of the Democratic revolution in Oregon.

Mr. Truman called the roll of Columbia basin dams started from 1945 to 1952, listing 13 "Democratic dams." Since the Republicans have been in power, he said, "they have not recommended the construction of a single new Federal dam in the Columbia valley."

Battle for Liberalism

He declared that "the Eisenhower administration's latest budget request for the Columbia power system is less than half the amount requested in the last budget I sent to Congress." He added that Republican power policies have already set the Northwest back ten years.

"You people in the North-

Child Evangelism Institute Slated

The annual Child Evangelism Fellowship three day institute for teachers will be held Monday, Sept. 29 through Oct. 1 at the Pilgrim Holiness church, corner of East Jackson and Bessie sts.

Here to conduct the institute are the Misses Ann and Bee Hollenbeck, Salem, teacher training team for the fellowship.

The school is interdenominational and interested persons may attend the entire three day session which starts at 10 a.m. and continues through 2:30 p.m. each day or for only certain periods.

Included in the course will be methods for teaching the Bible to children as well as a Bible class for teachers from Philippians and Colossians. The two teachers will hold short institutes throughout the western states during the winter months.

west," he said, "are fighting the true battle of liberal democracy in your fight for public power. On no other issue is the line between the public interest and special privilege so clear cut."



JOINING WHITE HOUSE STAFF, Malcolm C. Moos (left), St. Paul, Minn., takes oath as administrative assistant to President Eisenhower. Oath is administered by Sherman Adams (right), outgoing special assistant to President.

Democratic Party Girds to Oppose Right-to-Work

Washington—Democrats were lining up Saturday against right-to-work laws in all six states where the issue will be on the ballot in the Nov. 4 election. The Republican stand ranged from aggressive support to outright opposition.

The differences were revealed in a check of the positions taken by candidates for governor and/or U.S. Senator in each state and of the platforms adopted by the state party organizations.

While various Republican nominees took widely differing positions, the GOP state platforms emphasized neutrality, in contrast, the Democratic platforms, in all six states, expressly or by implication, opposed right-to-work laws.

The statutes, already in force in 18 states, outlaw union shop contracts and other labor-management agreements requiring employees to belong to unions to hold their jobs.

California, Colorado, Idaho, Kansas, Ohio and Washington will vote Nov. 4 whether to adopt such laws. In all cases, union leaders are fighting against the measures.

Injunction Issued Against Shell, Co-op

Portland—A temporary restraining order against Shell Oil Co. and Grange Cooperative Wholesale was granted to Pacific Supply Cooperative of Walla Walla, Judge Alfred P. Dobson in circuit court here.

Judge Dobson set a deadline of next Friday at 2 p.m. for the defendants to show cause why the injunction should not be made permanent.

The order restrains Shell Oil and the GCW from inducing local units of Pacific from breaching their supply purchase contracts with the huge cooperative.

Judge Bolt to Rule On Request by Beck

Washington—U. S. District Judge George H. Bolt was in the nation's capital on Friday where he will sit on the federal bench until early November.

Judge Bolt left Tacoma without levying a decision on a request Wednesday by former Teamster President Dave Beck asking that his Nov. 10 trial on income tax evasion charges be indefinitely postponed because of the publicity he has received. Beck charged in his affidavit that because of the publicity he could not receive a fair and impartial trial before any jury.

It was indicated that Bolt's decision on the Beck action will be mailed to his Tacoma office and delivered next week.

Personality Change Improves Posture

Iowa City, Iowa—Persons with round shoulders or other such defects may have to change their personalities as well as their physical stances to develop a better posture.

According to Pro. Eleanor Metheny of the University of Southern California, you stand as you "feel."

Your habitual posture seems comfortable to you because it expresses how you feel, Dr. Metheny said. This "feeling" for posture comes from the same source that gives you a sensation of pleasure as you swing a golf club or take a swimming stroke, she said.

Fort Frontenac was built in 1673 on the site of the present city of Kingston, Ont.

Floods in Wake Of Typhoon Ida Devastate Japan

Tokyo—Floods following in the wake of the worst typhoon to strike Japan in 24 years piled up casualties and damage yesterday in the picturesque peninsula resort area south of Tokyo.

Officials said as many as 1,600 persons were feared dead in the 100-mile-an-hour storm and the floods that followed it. There were no known American casualties. Record 16 to 20-inch rains in some areas left as many as 400,000 persons homeless.

Twenty-nine of Japan's 46 prefectures (provinces) were hit by Typhoon Ida which

reached gusts of 160 miles an hour in its violent path across the Tokyo-Yokohama area yesterday. The area affected ran from central Japan north to Hokkaido.

Worst-hit area appeared to be the Izu peninsula some 50 miles southwest of Tokyo.

Police officials said the raging floods which inundated the area killed as many as 1,400 persons.

Casualties in other areas of Japan, including Tokyo, mounted to 1551 dead and 78 missing.

Shipping failures prevented an accurate picture of the devastation at Izu.

A waterproof corrugated shipping box has been developed in which produce can be packed in the field and afterwards washed in the container.

FURTHER REDUCTIONS!



FINAL 2 DAYS
Definitely ENDS **SEPT. 30th**

PRE-INVENTORY CLEARANCE

HONEST VALUES at a LARGE HONEST Discount

HELP YOURSELF TO SAVINGS WHILE YOU HELP US CLEAR THESE ITEMS BY SEPTEMBER 30TH

Living Room

1—Modern Beige Sofa Reg. \$339.50 **NOW \$219.50**

1—Beige Chair & Ottoman Reg. \$239.50 **NOW \$159.50**

1—Foam Seat Barrell Chair Reg. \$89.95 **NOW \$29.95**

1—Blue Tweed Lounge Chair—Reg. \$109.50 **NOW \$69.95**

1—Coral Tweed Occasional Chair—Reg. \$69.95 **NOW \$29.95**

1—2-piece Beige Sectional Reg. \$559.50 **NOW \$359.50**

Occasional

15 ONLY—LAMPS 1/3 to 1/2 OFF reg. price

1—Modern Lamp Table Reg. \$49.95 **NOW \$9.95**

Bedroom

1—4-pc. Maple Suite Reg. \$443.85 **NOW \$299.50**

1—5-pc. Modern Walnut Suite—Reg. \$622.40 **NOW \$399.50**

1—5-pc. Modern Sandlewood Suite—Reg. \$547.40 **NOW \$399.50**

1—3-pc. Oak Bed Room Suite—Reg. \$319.00 **NOW \$249.50**

1—Oak Bunk Bed Reg. \$109.50 **NOW \$79.95**

1—Walnut Provincial Bed Reg. \$89.95 **NOW \$39.95**

1—Maple Bookcase Bed Reg. \$74.95 **NOW \$39.95**

1—Maple Trundle Bed Reg. \$89.95 **NOW \$59.95**

1—6-pc. Maple Jr. Dining Room Suite—Reg. \$409.75 **NOW \$299.50**

1—Mocha Walnut 8-piece Dining Room Suite Reg. \$619.00 **NOW \$419.50**

Set of 3 Tables, 1 Cocktail and 2 Step (walnut with formica tops) Reg. \$119.50 **NOW \$59.95**

2—Heywood-Wakefield Birch Lamp Tables Reg. \$59.95 each **NOW \$59.95 pair**

1—8-pc. French Provincial Suite—Reg. \$656.00 **NOW \$399.50**

1—8-pc. Maple Suite Reg. \$548.00 **NOW \$419.50**

1—6-pc. Cherrywood Suite Reg. \$293.00 **NOW \$129.50**

1—6-pc. Maple Jr. Dining Room Suite—Reg. \$409.75 **NOW \$299.50**

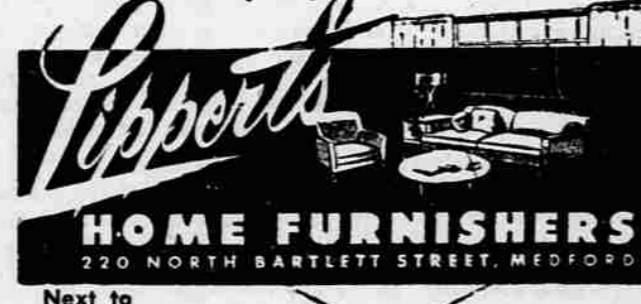
1—Mocha Walnut 8-piece Dining Room Suite Reg. \$619.00 **NOW \$419.50**

A Few BEDSPREADS left at 1/3 OFF Regular Prices

NOT GOING OUT OF BUSINESS! NOT A TRUSTEE SALE! This is a Pre-Inventory Clearance of Items We've Had Too Long.

For Furnishings with a Sense of Style, Always Shop

HONEST Mark Downs Many More Items Not Listed Here!



24 Disease Cases Reported Last Week

A total of 24 communicable diseases were reported to the Jackson county department of health last week, according to Dr. A. Erin Merkel, public health physician.

There were five cases of influenza in Phoenix, and six cases of mumps with four in Medford and two in Ashland. Other cases reported included pneumonia, Medford and Ashland, 1 each; German measles, Medford 2; measles, Ashland 1; chicken pox, Medford 1, Ashland 2; trench mouth, Ashland 3; strep throat, Talent 1; and infectious mononucleosis, Ashland 1.

While various Republican nominees took widely differing positions, the GOP state platforms emphasized neutrality, in contrast, the Democratic platforms, in all six states, expressly or by implication, opposed right-to-work laws.

The statutes, already in force in 18 states, outlaw union shop contracts and other labor-management agreements requiring employees to belong to unions to hold their jobs.

California, Colorado, Idaho, Kansas, Ohio and Washington will vote Nov. 4 whether to adopt such laws. In all cases, union leaders are fighting against the measures.

Injunction Issued Against Shell, Co-op

Portland—A temporary restraining order against Shell Oil Co. and Grange Cooperative Wholesale was granted to Pacific Supply Cooperative of Walla Walla, Judge Alfred P. Dobson in circuit court here.

Judge Dobson set a deadline of next Friday at 2 p.m. for the defendants to show cause why the injunction should not be made permanent.

The order restrains Shell Oil and the GCW from inducing local units of Pacific from breaching their supply purchase contracts with the huge cooperative.

Judge Bolt to Rule On Request by Beck

Washington—U. S. District Judge George H. Bolt was in the nation's capital on Friday where he will sit on the federal bench until early November.

Judge Bolt left Tacoma without levying a decision on a request Wednesday by former Teamster President Dave Beck asking that his Nov. 10 trial on income tax evasion charges be indefinitely postponed because of the publicity he has received. Beck charged in his affidavit that because of the publicity he could not receive a fair and impartial trial before any jury.

It was indicated that Bolt's decision on the Beck action will be mailed to his Tacoma office and delivered next week.

Personality Change Improves Posture

Iowa City, Iowa—Persons with round shoulders or other such defects may have to change their personalities as well as their physical stances to develop a better posture.

According to Pro. Eleanor Metheny of the University of Southern California, you stand as you "feel."

Your habitual posture seems comfortable to you because it expresses how you feel, Dr. Metheny said. This "feeling" for posture comes from the same source that gives you a sensation of pleasure as you swing a golf club or take a swimming stroke, she said.

Fort Frontenac was built in 1673 on the site of the present city of Kingston, Ont.

THINKING OF BUYING A PORTABLE TYPEWRITER?

Keep These Things in Mind

- **GUARANTEE?** We give a full year with all new parts.
- **VALUE OF MACHINES 5 YEARS LATER?** Smith-Corona and Underwood hold their value BEST!
- **PARTS AND REPAIRS** Will they be available at all times and places? Smith-Corona or Underwood parts and service available anywhere.
- **PRICES AND TERMS? . . . CHECK OURS!**

C & E BUSINESS MACHINES
CHAPMAN & ELDER
218 South Central — SP 3-4895



"IMPERIAL" LAUNDRY TWINS

SAVE \$50.00 On the pair

LAUNDROMAT \$269.95
Reg. \$289.95 — Save \$20.00

Matching DRYER \$199.95
Reg. \$229.95 — Save \$30.00

Models L-112 & D-112

IMAGINE! This "Aristocrat 30" WESTINGHOUSE RANGE

WAS \$219.95 — SAVE \$30.00

Yours for ONLY . . . \$189.95

A real value winner — high style appearance with top-flight performance. All surface and oven heating units are Westinghouse PLUG-OUT design, rotary controls give 5 marked heats and your choice of 1001 between marked settings. Same big Miracle Sealed Oven as in most expensive models.

SEE THIS FINE VALUE NOW!

Model CL-30

Westinghouse EASY TERMS

Trowbridge & Flynn Electric Co.

214 West Main Street Phone SP 3-6241