

## Population Hike Makes Coast Area Meat Importer

Corvallis—Prospects for expanding Oregon's livestock and poultry industries to fill local demands for meat are under study by Oregon State college agricultural experiment station.

West Coast population increases, coupled with higher standards of living, have turned coastal states into a meat-importing area, reports Dr. Gordon R. Sifton, OSC agricultural economist heading the new project.

A large percentage of the pork and broiler meat eaten in Oregon is shipped in from outside the western region. Increased cattle feeding in Oregon during recent years is bringing supplies of beef closer to local demands, the economist explains.

Greatly expanded feed grain production in Oregon during the past five years may be the key to more livestock and poultry grown for local markets, believe state agricultural leaders.

The OSC study is expected to run for two or three years. Results will be public in a form designed to help farmers decide whether it is economically sound for them to go into the livestock business or to expand present livestock operations.

Long-range economic opportunity for various types of livestock enterprises on Oregon farms will be studied. Alternative livestock programs will examine such information as investment required, risk, and amounts and types of feeds required.

Relationships in past years between local feed grain supplies, livestock numbers, and

# Farm and Garden

## Storage Regulations In Effect July 25

Salem—Regulations governing the operation, licensing and maintenance of bonded public warehouses in Oregon were put into effect July 25 by the state department of agriculture.

The final order modifies the department's original proposals on marking and identification of grain and storage facilities, maintenance of quality and quantity of grain and maintenance of grounds and physical plant.

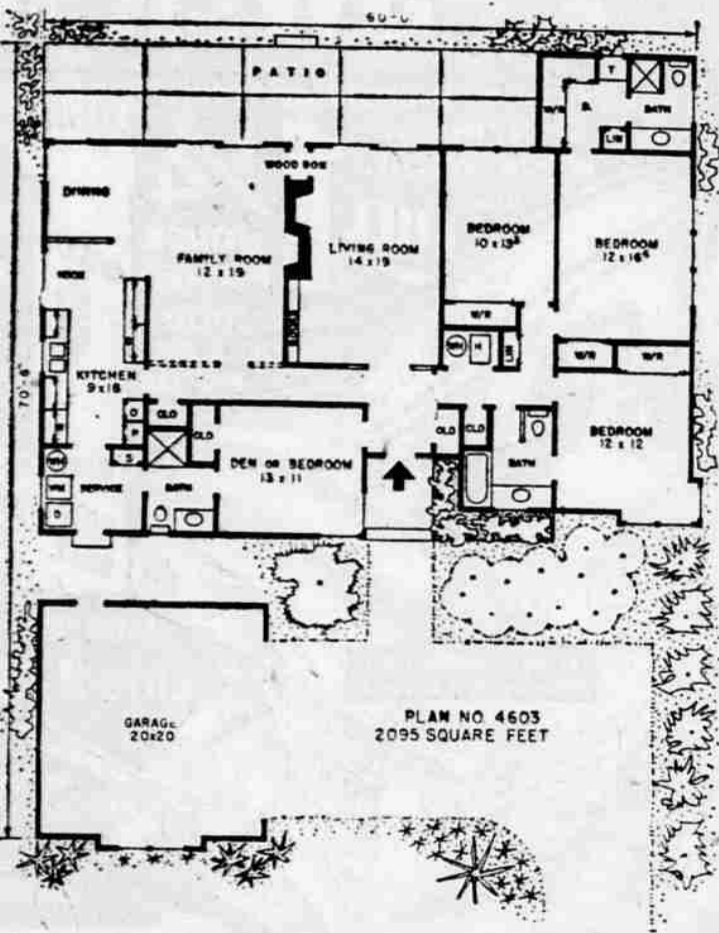
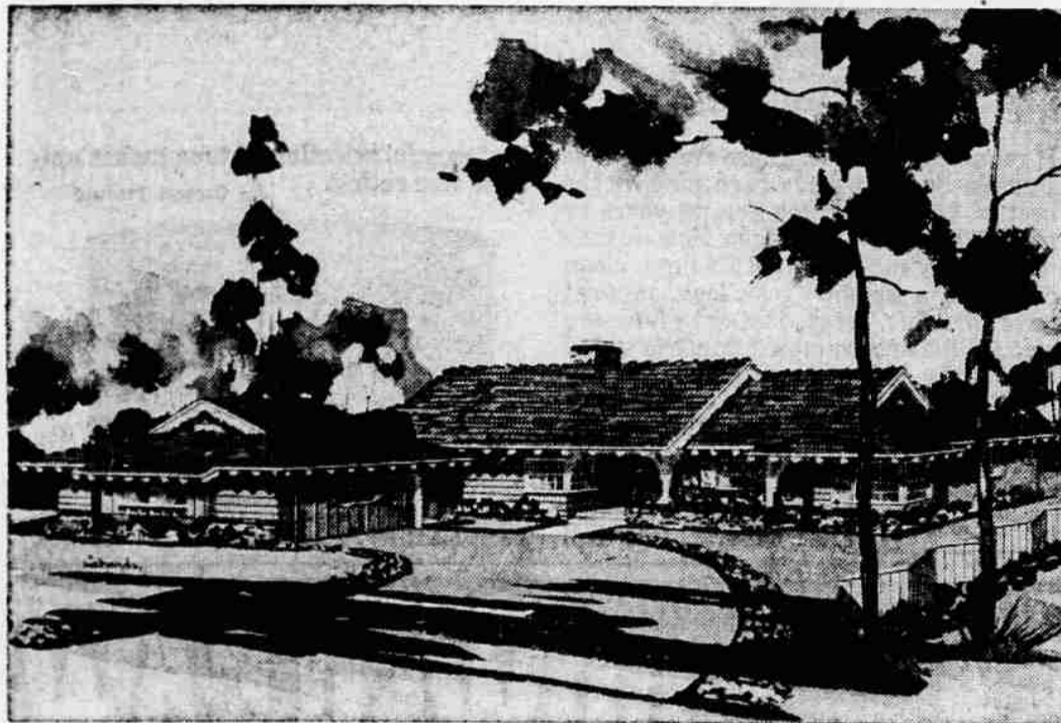
The new regulations require that storage facilities must be adequate to protect commodities from the elements, rodents, birds and injurious vermin. Windows and other openings used for ventilation must be permanently screened.

Warehouse interiors must be kept free of all rodents and birds and reasonably free of dust and live infestations of injurious insects. Breeding

prices will be of major importance in the study, Sifton explains.

Oregon farms produced an average of 425,000 tons of barley, oats, and corn per year from 1949 to 1953. By 1956, production of these feed grains had increased to 767,000 tons. Barley prices in Oregon fell from \$34.58 per ton during the 1949 to 53 period to \$39.58 in 1957.

The project will analyze business agreements, marketing patterns, and other economic trends that could influence the course of Oregon's livestock and poultry industry.



## This Week's 'Home for Living' Plan

By HIAWATHA ESTES  
"We have a large family—by today's standards—and want a home that offers both family unit and individual privacy."

To meet these specifications, this 2,095 square foot plan has the living room and family room to the broad rear terrace—a place where the family can relax, entertain, even dine outdoors in warm weather. In colder seasons this wall of glass offers a wide view of the rear garden and play yard.

In both the living room and family room the twin fireplaces extend into attractive walls of used brick. Wide bookshelves are located in the living room, while a wood box opens to either the living or family rooms.

For a more open plan, the wall (shown with a dotted

line) between the family room and hall could be omitted during construction, if desired. The dining alcove, actually an extension of the family room, is divided by a planter-topped half-wall room from the eating area in the kitchen.

Built-in appliances and a pantry in the kitchen, home laundry equipment and extra storage in the service area make up the efficient work center. The three-quarter bath opens to both the service and den.

Only a step across the breezeway from the service entrance is a side door to the double garage, for sheltered passage in bad weather.

Three family bedrooms open from the quiet hall. To complete the master bedroom suite, a spacious wardrobe-dressing room leads to the private three-quarter bath

while an additional wardrobe has been provided in the room itself. The den would make an ideal fourth bedroom for a teenage member of the family. Partitioned fixtures are luxury features of the family bath.

A water heater has been placed in the forced air heater closet and another located in the service for more efficient hot water distribution.

A cedar shake room, used brick veneer and band-sawn trimmed gables add color and charm to the rustic exterior.

Complete working drawing of the above plan can be obtained at a cost of \$2.50 for the first set and \$5 for each additional set, when ordered at the same time. This plan will be available for a period of four months from this date. Please allow two weeks for delivery. If the above home does not entirely meet with your satisfaction a new home plan book, 'Homes for Living,' may be purchased for \$1. Send all orders for either plans for books to Hiawatha Estes, P. O. Box 401-7, Northridge, Calif.

## Six-Months Report Given by State On Stock Diseases

Salem—The state department of agriculture's latest animal disease report shows that 1671 cases of brucellosis were reported during the first six months of 1958.

Other cattle diseases reported during this period include 177 cases of anaplasmosis, 51 cases of leptospirosis, 43 cases of bacillary hemoglobinuria, 17 cases of blackleg, ten cases of tuberculosis and one case of mucous disease.

In addition many cases of hemorrhagic septicemia and infectious keratitis were diagnosed in Oregon cattle.

In sheep, many cases of ovine ecthyma and infectious keratitis led the list, followed by 41 cases of back disease and 14 cases of bacillary hemoglobinuria.

Swine were hit hardest by erysipelas, influenza and enteritis. Two cases of leptospirosis and one case of hog cholera were reported during the six-months period.

Three horses had encephalomyelitis (sleeping sickness).

Poultry diseases reported include 31 cases of chronic respiratory disease, six cases of erysipelas and 17 cases of salmonellosis. Considerable cases of infectious bronchitis were diagnosed in poultry, and an outbreak of ornithosis occurred in one turkey flock.

Dr. K. J. Peterson, state veterinarian, says the compilation on communicable diseases is from reports filed by private, state and federal veterinarians.

## Swine Conference Set for November

Leaders of all segments of the swine industry are planning a National Swine Conference for this fall at Purdue University at Lafayette, Ind. It is tentatively scheduled for Nov. 14 and 15, it was announced.

Preliminary plans for the conference were made at a meeting July 28 at Chicago, called by the National Swine Growers Council.

Attending the meeting were representatives of producers, land-grant colleges, marketing agencies, the veterinary medical profession, feed manufacturers, general farm organizations, the meat packing industry and meat research agencies.

Nearly all groups, associations and allied interests involved in the producing, marketing and processing of swine have pledged their support for this initial National Swine Conference.

The conference, as outlined at the group planning meeting, will include discussions by authorities from colleges and industry on selected swine problems, to be followed by open committee workshops to develop recommendations on research and other action.

Leaders, in promoting the conference idea, declared that "There is a need for genuine leadership in bringing about united industry-wide action on the problems of the swine industry."

## Predator Beetles To Fight Aphid

Corvallis—Eight shipments of tiny "predator" beetles have been brought to the Northwest from Europe in an attempt to find control or checks for the balsam woolly aphid that is threatening the true fir stands of Oregon and Washington.

The beetles feed upon the aphids—originally from Europe also—and have given partial control of the damaging pests in some spots there. They do not eat other insects and are not harmful in any way, according to Dr. Julius Rudinsky, Oregon State college forest entomologist.

OSC and the Pacific Northwest forest and range experiment station, Portland, are cooperating on the project. Canadian entomologists studying control programs in Europe arranged for the shipments.

The aphid now is in epidemic stage on Pacific silver fir and subalpine fir in western Oregon and Washington. More than a half-million acres of trees are infested.

The true firs include silver, subalpine, grand, noble, white, Shasta red fir, and others, but not Douglas fir. Noble and Shasta red fir are least affected and appear to have some degree of resistance to the aphids.

# --- CHIT CHAT ---

By JOE G. COWLEY  
Mail Tribune Farm Editor

Wednesday we visited the 4-H pre-fair at the Elbert Bigham place on Bigham rd. at Eagle Point. It's a traditional affair and draws luncheon guests from miles around to relieve tables groaning with sandwiches, salads and cakes.

Visitors lined up as large, man-sized ham and chicken sandwiches were flipped onto paper plates. Cool, tasty mounds of potato salad and cole slaw followed. Then came the crowning touch of large wedges of thick-frosted cakes. Steaming black coffee served country style from large enamel pitchers poured in continuing black streams into paper cups.

The moss-covered tables proved the event is of long standing. White butcher-type paper covered the tables and blankets the benches. In the background hogs grunted and dairy and beef cattle stirred restlessly in the heat. Over 100 4-H members of all ages painstakingly brushed down and combed the coats of their animals while preparing for the final events.

The bright-eyed, active youngsters with their sleek, well-cared-for livestock proved again that a large chunk of this county's future lies with agriculture.

On the way back our companions stopped their car to give us a good look at some "bottle trees." It seems these are reported to be the only "bottle trees" in existence. Following a visit to a local tavern some of the residents tie a string and a stone to the neck of beer bottles, then throw them up in the trees. The bottles hang there, glistening in the sun just as if they sprouted from the branches.

The storm which worked havoc with farms and orchards in the Wagner creek area didn't do much damage to the agronomy station at Talent, according to Harold White, superintendent. The station just caught the fringe of the storm, White said. Most of the corn there was harvested.

An experimental plot of sweet corn on the Clarence Holdridge farm in the Wagner Creek area was hit, White said. This experiment will have to be wiped off the slate and started over again, he said. It was a variety trial. Experimenters were working on 19-20 varieties of corn which may be suitable for southern Oregon.

The corn you now have on your table is largely local corn. Quite a little acreage of sweet corn is raised here. Some of it is marketed locally. A large percentage is trucked out to the coast, to northern California and east of the mountains.

Those people involved in the Talent irrigation project and other heavy construction aren't the only ones anxiously awaiting the vote results by the operating engineers on the general contractors' package offer. Water development at the Hanley property of the Southern Oregon branch experiment station is also delayed pending the outcome of this strike.

Drive south on Highway 99 and you will notice by the National Guard armory a trim looking tree-shaded park complete with picnic tables and electric trees. This makes a cool rest stop for hot and weary tourists. The Kiwanis club and others who helped develop it are to be commended. This is only the start—we hope! At the same time it must be remembered that it was the Jackson county fair board which pioneered the idea. It donated the land and originally tried to get the state highway commission to take over its development five long years ago!

Remember last summer and early fall when frozen vegetables and fruits were up for big sales? This season it may be different. According to word from Elvera Horrell, extension agricultural economist, prices of most canned and frozen vegetables are likely to average slightly to moderately above last season.

Reason? "Total stocks of processed vegetables at the beginning of the 1958-59 marketing season were below last year's heavy stocks. At the same time they are well above average. All of the decrease was accounted for by the 15 per cent fewer frozen vegetables on hand," the economist explained.

Those of you who thirst for ice-cold watermelon on these hot summer days will be happy to know that extension economists predict late summer watermelon production will be 19 per cent larger than 1957 production and 43 per cent above average.

We like Boysenberry and blackberry pie so were sorry to learn that the recent high temperatures west of the Cascades damaged some of the remaining Boysenberry and blackberry crops, according to extension economists. The raspberry season is over in Oregon and reports show nearly 10 million pounds of red raspberries and 8½ million pounds of black raspberries were delivered to processors. Deliveries toward the end of the Boysenberry season total about 4½ million pounds.

Those planning to can peaches can expect slightly higher prices this year. The peach crop in this area is expected to be light. We haven't heard from the Yakima area yet. Prices are expected to be higher in California—a major peach producer. An agreement between canners and the association controlling a considerable tonnage of regular and Fay Elbertas has settled on \$47.50 a ton, roadside, 2½ inch minimum. Last season's price is reported as \$45.

## New Device Used For Terramycin

New York—An improved automatic device for adding Terramycin in correct amounts to poultry drinking water offers flock owners a better way to save birds and fight disease. The unit is constructed to hook directly into the main water supply line and will automatically portion out the right amount of terramycin as the birds drink. The new dispenser, made up of an aluminum dispensing bottle, connecting head, complete with stand, is easily installed to permit continuous treatment.

**2x4-8'**

**SPECIAL PRICE**

**\$10. PER M**

**Bargain Grade**

at

**CHENEY STUD MILL**

**Central Point**

## Four Picked as Champions by Antelope 4-H Pre-Fair Judges

Eagle Point—Four champions were named as a result of the Antelope 4-H pre-fair held at the Elbert Bigham ranch Wednesday.

Named as champions were Willie Debrick, Central Point, swine showmanship; Susan Wright, Oak Grove, second; Charles Badcock, Evans Valley, third; and Sharon Suhr, Grants Pass, fourth.

Beginners—Robert Strawhe, Ruch, first; Ronald Martinson, Eagle Point, second; Clint Gibson, Central Point, third; and John Anderson, Evans Valley, fourth.

The pair were named champions following the morning session of judging and exhibiting. Approximately 150 4-H members, their families and visitors were present at the luncheon served on the farm.

The various divisions and the results included: **Swine Showmanship** Senior—Betty Higday, Antelope, first, and Bill Hubbard, Antelope, second. Intermediate—Willie Debrick, Central Point, first; Don Higday, Antelope, second; Clint Gibson, Central Point, third, and Mike Higday, Antelope, fourth.

Beginners—Lewis Barker, Ruch, first; Wayne Debrick, Central Point, second; Judy

Frink, Central Point, third; and John Anderson, Evans Valley, fourth.

**Sheep Showmanship** Senior—Susan Wright, Oak Grove, first; Craig Wright, Oak Grove, second; Charles Badcock, Evans Valley, third; and Sharon Suhr, Grants Pass, fourth.

Beginners—Robert Strawhe, Ruch, first; Ronald Martinson, Eagle Point, second; Clint Gibson, Central Point, third;

and Everett Adamson, Eagle Point, fourth.

Beginners (Class No. 2)—Michael Blanchet, Reese Creek, first; Douglas Moore, Central Point, second; Leah Mae Deter, Ruch, third; and Carol Deter, Ruch, fourth.

**Beef Showmanship** Senior—David Woolfolk, Antelope, first; Judy Bradshaw, Antelope, second; Patsy Charley, Central Point, third; and Bill Anhorn, Central Point, fourth.

Intermediate—Ronnie Anderson, Antelope, first; Linda Gibson, Westside club, second; Mike Reed, Antelope, third; and Ricky Anderson, Antelope club, fourth.

Beginners—John Hughes, Phoenix, first; Candice Gail, Rogue River, second; David Callaway, Reese Creek, third; and Mike Blanchet, Reese Creek, fourth.

**Beef Fitting** Senior—Judy Bradshaw, first; Alice Woolfolk, second; Ann Higday, third; and Fredy Jossey, fourth.

Intermediate—Ronnie Anderson, first; Mike Reed, second; Linda Gibson, third; and Ricky Anderson, fourth.

Beginnings—David Callaway, first; Ray Bever, second and Glenn Fry, third.

**Dairy Showmanship** Senior—Carolyn Ties, Antelope club, second; Judy Bradshaw, Antelope, third; and Romelle Fossen, Ruch, fourth.

Intermediate—Steve Geren, Antelope, first; Mary Ann Cantrill, Ruch, second; Georgia Hubbard, Antelope club, third; and Dennis Cornutt, Gold Hill, fourth.

Beginners—Sue Gettling, Grants Pass, first; Mike Blanchet, Reese Creek, second; Renae Johnson, Phoenix, third; and Paulette Anderson, Antelope, fourth.

Mixed—Karen Josy Antelope, first; Gary Fossen, Ruch, second; Zane Strickland, Rogue River, third; and Daryl Zapell, Talent, fourth.

Livestock judging contest—Betty Kerr, Sis-Q club, first, 348.3 points; Ronald Anderson, Antelope, second, 336.9; Jan Calloway, Reese Creek, third, 335.6; and David Woolfolk, Antelope club, 335.4.

## Former Administrator Becomes Inspector

Salem—Ben Davidson, former administrator of the Oregon Potato commission, rejoined the state department of agriculture July 29 as a shipping point inspector.

Davidson was with the department's shipping point inspection service in Redmond for 11 years before he joined the potato commission in 1947.

He will work out of the Salem headquarters.

**BRILL**

**METAL WORKS**

Commercial — Industrial  
Residential Sheet Metal Work  
Stainless, Galvanized  
and Copper Fabrication  
**2287 West Main**  
PHONE 5P 2-4440

# GET THE STRAGGLERS

with  
**KELTHANE**  
... CHECKMATE FOR MITES

The most economical and effective way to keep mites in check is with a thorough spray application of KELTHANE—before the props go up. This program will normally keep mite populations low for the rest of the season. KELTHANE can be used close to harvest on all fruits. And for post-harvest mite control on cherries, remember to spray with KELTHANE.

Chemicals for Agriculture

**ROHM & HAAS**  
**COMPANY**

WASHINGTON SQUARE, PHILADELPHIA 5, PA.

Representatives in principal foreign countries

KELTHANE is a trade-mark, Reg. U.S. Pat. Off. and in principal foreign countries.