

Recreation Area Development Progressing



POND CONTRAST SHOWN—Development of cover around ponds in the Rogue Valley Game Management area on Rogue river is illustrated here. Pond in picture with vehicle has been flooded for the first year and vegetation is sparse. The tall growth in the other photo demonstrates the good cover resulting after a pond is well established.



STUDIES PHEASANTS IN FIELD—Charles Shepard, game commission field agent in charge of the Rogue Management area, peers over field of vetch with binoculars. He is spotting pheasants using the food and cover of the area. These game birds may be hunted on the tract in season.

Game Management Area Along Rogue State Administered

By DICK JEWETT
Mail Tribune Sports Editor

While city and county planners ponder the possibility of recreational facilities on City of Medford property along Rogue river, development of an adjacent area is quietly progressing.

This tract is the Rogue Valley Game Management area administered by the Oregon State Game commission. Developed over the past four years, it provides a variety of recreational opportunities and wildlife food and cover.

Consisting of 1,860 acres, the tract has land on both sides of the river in the area where the Camp White military bridge once crossed the stream. Including the mouth of Little Butte creek, the property affords much fishing frontage with some good riffles. Catfishing is possible in water impoundments and waterfowl and upland game birds may be hunted in season.

Picnicking, swimming, and bathing, recreational camping and rock hunting are other uses of the game commission property. Boy Scouts and YMCA groups have utilized the land for day camps.

A trip to the area on a warm, sunny week end will reveal its popularity. Its attractiveness to anglers was demonstrated on the opening week end of the season and on Memorial day when fishermen dotted the river banks. Deep potholes in Little Butte creek are swimming spots.

No Transient Camping
No transient camping or use of the property as a temporary homesite is allowed but prospective recreational campers may obtain permission by calling at the headquarters on Gregory rd. It is thereby possible for tourists to camp and make the management land a base for a few days fishing along Rogue river.

The game commission tract is popular with rock hounds. Charles Shepard, field agent in charge of the area, has pointed out that the commission looks with favor on this "exploration" of the land. He mentioned that the best rocks are picked up after winter storms.

On the south side of the river, Rogue Valley Game Management area lies generally between Table Rock and Agate rds. It lies east of City of Medford property. Some 400 acres are on the north side of the river in the vicinity of the former military bridge site.

Acquires Land
Shepard explained that the game commission acquired 1,700 acres from the General Services administration of the federal government in 1954. An additional 160 acres, the old Brophy ranch, used as the headquarters, was purchased to firm up water control of the north and south forks of Whetstone creek. Added cover and protection for wildlife was also gained from the transaction.

Approximately 135 acres are under cultivation with grains. Another 100 acres are in permanent pasture. There are other fields which can be put into cultivation when bird population warrants more feed.

Some 20 ponds on the management land are of desirable value from a water table standpoint. They provide water for animals and help increase cover. Three-fourths of the impoundments sustain some fishing pressure. Catfish mainly are in the ponds. An additional six impoundments have been constructed and three of these will be fishing ponds.

Help Spread Water
Shepard, who has had the main hand in the area's development, has pointed out that the ponds help spread water over the land and raise water level to sustain plant and animal life. Also, the type of soil and nearness of hardpan to the surface make the area an ideal catch basin for fall and winter rains and an excellent attraction for waterfowl in winter months.

Shepard stressed that it is a combination of food, water and cover manipulation which governs success or failure of the area from a bird standpoint. Native wood ducks and mallards are "taking hold" on the tract, according to Shepard. The tract supports a lot of pheasants and doves. Valley quail are in good supply. For the benefit of hunters the area is also stocked with game farm-raised pheasants. Twenty-six bob white quail also have been brought to the area recently.

Open to Public
The management land is open to the public the year around for recreational use, but, naturally, to protect the game birds, shooting is restricted to the open seasons. Jackson county is off the recognized flyway for migrating waterfowl but the game property does get some fairly good flocks of birds on the tail ends of storms. By establishing a series of ponds and by scattering food plots, the game commission intends to



HEADQUARTERS RANCH—This scene shows the headquarters property. Pond in the foreground is stocked with catfish. Ponds in the background are particularly popular before the opening of the trout season on the Rogue. Cattle are shown grazing back of pond.

4-H CLUB NEWS

Nimble Thimbells
The Nimble Thimbells Sewing and Knitting club recently gave their mothers a tea in the Central Point Grange hall. About 50 mothers and daughters attended. After the business meeting, games were conducted by Linda Johnson and Kathy Frederick. Refreshments were served after the games.

A meeting was held at Kristy Chamberlain's home on Old Stage rd. last month. We discussed what we had done and what we would take to preface. After the meeting, games were played out on the lawn while refreshments were being prepared by Mrs. Chamberlain.

The Central Point preface was held late last month in the Crater cafeteria. Among girls from the club who took honors were Judy Frink, first; Carolee Kuest, second; Kathy Thompson, third. In Just Sew Girls first was won by Carol Roach, Shirley Roach, Gail Fisher and Cheryl Hammill; reds, Kristy Chamberlain, Rosemary Rempert, Kathy Rempert and Ruth Daniels; whites, Susan Englund and Teri Davis.

In the Sew It's Fun Girls, first were won by all the girls that exhibited—Judy Frink, Kathy Thompson, Linda Johnson, Donna Debrick, and Kathy Frederick. In the Charmingly Yours, Elaine Young won blue, and in the Teen Wise clothing Carolee Kuest won red, and Colleen Franek won white.

Carol Kuest, President

Kapri Kids Goat Club

The last two Goat club meetings we have been going around to the different club members' homes to see their goat and the places they keep them.

We first went to Mrs. Lindstrom's and saw her goats and barns, then we went to Richardson's and saw their goats and then to Glidden's. There we saw their goats and had our meeting and were served refreshments. After that we went to Norris' and saw their goats.

The second week's meeting we met at Jahn's. There we had our business meeting. We discussed further plans for the fair and decided we would attend as many prefaces as we could. Next week we will attend one.

We saw Jahn's goats and also had refreshments, then we went to Issi's and saw their goats.

Frank Issi, Reporter

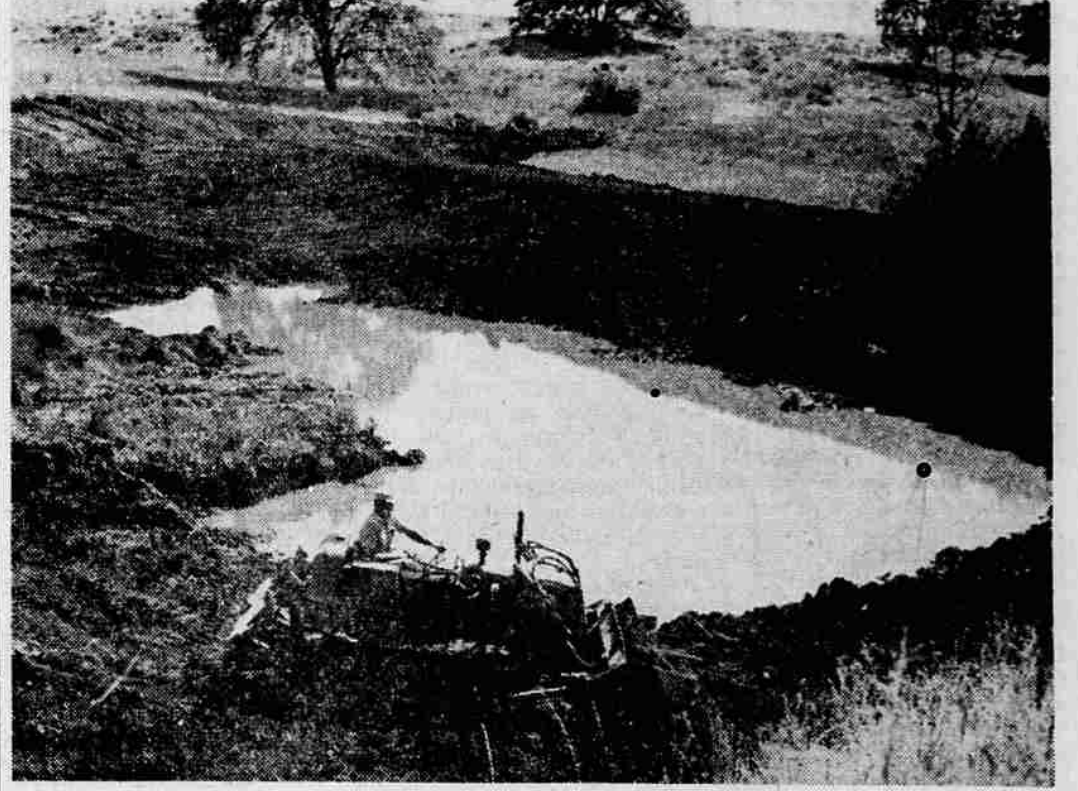
Central Point Flower Club

The Central Point Flower club, the Daffy-Dills, held a meeting at the C. W. Anhorn home on June 10 to discuss the flower show the Garden club was having on June 11.

Cheryl Swanson served refreshments. Entries and awards at the flower show are Patty McCue, Floribunda rose; Judy Frink and Dorna Mose, arrangement of red flowers for Father's day; Cheryl Swanson, composition illustrating favorite hymn; Elaine Young and Patty McCue, woodland scene; Patty McCue, arrangement of garden flowers; Judy Frink, bird poster; all blue ribbon awards.

On June 25, we each made a flower arrangement to be judged at the Home Economics preface in Central Point. Mrs. B. Gordon was the judge and she placed us as follows: Cheryl Swanson, Patty McCue and Judy Frink received blue ribbons; Dorna Mose, a red ribbon, and Elaine Young, white.

Judy Frink, Reporter



POND CONSTRUCTED—A water impoundment program to sustain and expand plant and animal wildlife. Water supply is the key to development and success of the area from a bird standpoint will be governed by the manipulation of food, cover and water. Bill Knips is doing the work here.

4-H Club News

S and R Sewing club
The S and R Sewing club met at the home of our leader July 8 with a work meeting in the morning for those who could come.

Everyone brought their lunch after which a business meeting was called to order by President Susan Carroll. Each filled out a form to indicate a desire to enter the contests or do a demonstration. The meeting was turned over to Suzanne Palm, who told about her trip to summer school at Corvallis and the classes which she attended.

The girls asked questions which Suzanne answered. The girls decided to apply for summer school scholarships next year. Eleven girls were present.

Celia Putman, Reporter

Howard Bake-n-Stitchers

The Howard Bake-n-Stitchers held their meeting at Linda Chisum's home. The lesson was on sewing. The next meeting was sewing at Linda Chisum's on July 11.

Carol Millard, Reporter

The picturesque town hall of The Hague, capital of the Netherlands, was built in 1865.

WHAT'S THE SECRET?

Stockholm—(UPI)—Twice-defeated United States presidential candidate Adlai Stevenson turned to thrice-elected Socialist Premier Tage Erlander at a state banquet and asked:

"What is your secret for getting elected so many times?" There was no record of Erlander's reply.

FIRES EXTINGUISHED

Ashland—Two fires were extinguished by the Ashland fire department Thursday afternoon. The trucks were called at 2:55 p.m. to a small grass fire at Fifth and A st. At 3:23 p.m. trucks were called to a trash fire at 165 Meade st. No damage resulted from either blaze, the department reported.

Study Shows Color May Aid Emotional Illness

A recent Veterans Administration study indicates that color may be used as an aid in treating emotional illness. S. T. Brannock, officer in charge of the Medford Veterans administration office said today.

Extensive research at the Veterans administration center in Los Angeles suggests color therapy may be an important addition to present treatment for conditions such as anxiety states, depression, insomnia, high blood pressure, and nervous tension, Brannock said.

The 18-month project, exploring effects of projecting lights of different colors on several dozen normal persons, was headed by Dr. Robert Gerard, clinical psychologist.

Long Suspended
The physical and emotional impact of color long has been suspected both in industry and in medicine.

Brannock said the research results indicate blue may act as a relaxant and tranquilizer for anxious or tense individuals, while red, on the other hand, tends to disturb such people.

Even though the red and blue lights selected for the experiments were of identical brightness and radiant energy, Dr. Gerard, in charge of the research, reported that blood pressure, respiration rate, number of eye-blinks, and muscle tension were significantly lower during blue than during red illumination.

Brain Measurements
Brain wave measurements also showed significantly less arousal of the brain during blue illumination, Brannock said.

The differences between red and blue effects were particularly marked in more anxious and tense individuals. Intermediary levels were obtained with white light.

Brannock said since the study was made on normal people, further research will be made to investigate the effectiveness of color therapy on various groups of patients, including patients in mental hospitals.

Eligible Candidate Visits Rotary Club

Miss Carolyn Clogston, Medford student at the University of Oregon who is a candidate eligible to receive the Rotary Foundation Fellowship award from district 511, was introduced to the local Rotary club this week.

Miss Clogston was introduced by Lester D. Harris, principal of Medford High school. She is majoring in foreign languages. Successful candidates for the Rotary Fellowship are given the opportunity to continue their graduate studies for one year at a college or university in a country other than their own.

William Patton, manager of the Oregon Shakespearean Festival, Ashland, discussed the festival, and the national recognition it has received. Entertainment was provided by the "Waits," Arlieta Knowles, Jame Baker and Lyman Pruitt under the direction of W. Bernard Windt.

It has been calculated that the human body contains 26,500,000,000,000 cells.

Membership Fee Increase Slated

Membership fees for the Medford Multiple Listing Service, Inc., which was started here two years ago, will be increased Aug. 1, officials of the service have announced.

Membership fees will be increased to \$100 from \$25, and fees for associate members will be increased from \$10 to \$25. There will be no change in annual dues for members, and annual dues for associate members will be \$25, officials said.

Officials noted that since the service was started here, it has continued to grow and provide better service to the public. The service plans a revised set of by-laws in the near future which will be available to all members.

Green Fir Prices Show Increase

Sales of green fir dimensions showed an increase during the past week, according to lumber news services. Crow's Lumber price index went up 6 cents in the past two weeks, the rise caused entirely by strength in green Douglas fir. Kiln-dried fir prices and Western Pine region prices brought their average down, the news service said.

Random Lengths, weekly lumber market letter from Eugene, said the state's lumber market was steady last week with scattered price increases noted in some items. It reported that sales of green fir dimension were brisk at the mill level.