

Sandwell Finds Pulp, Paper Mill Feasible

Site at Grants Pass Suggested in Report

A pulp and paper industry development in the Rogue River valley appears very feasible in light of a recent study made by a Seattle, Wash., research company.

The proposed mill would produce approximately 51,000 tons per year each of kraft paper and linerboard at a site near Grants Pass. Making the development a reality, however, depends on several conditions, including raising an estimated \$30 million to finance it, and state legislation permitting industrial use of the Rogue river.

The Seattle firm, Sandwell and Company, Incorporated, concludes that adequate transportation facilities, labor force, raw materials, and power are available in this area, and a favorable market exists in the country, to make the proposition financially successful.

Authorized by the Oregon Development commission, the Jackson County Chamber of Commerce, and the Grants Pass and Josephine County Chamber of Commerce, the study encompasses Jackson and Josephine counties, which have a combined area of approximately 4,400 square miles and a total population of about 100,000 persons.

Included in the area are approximately 2.5 million acres of forest land, of which 90 per cent is commercial. The report notes that 70 per cent of the live saw timber in the area is Douglas fir, with most of the rest made up of other softwood species such as true firs, ponderosa and sugar pine, and minor quantities of western hemlock and western red cedar.

The estimated annual net growth on saw timber trees on commercial forest land in the valley is 330 million board feet measure, according to the report.

This is not, however, a measure of the full productivity of the land because certain areas are not currently stocked, other areas have seedling and sapling stands which have as yet no measurable growth, and still other areas contain old-growth stands on which the net growth rate is much less than it would be on young thrifty stands, the research company reports.

Possible Potential
A figure of 450 million board feet measure, based on forest service figures dating back to 1948, is advanced by the researchers as a possible potential annual growth rate for the study area. However, they report that the latter figure is conservative and that a new survey would show the potential growth rate to be in excess of 700 million board feet measure.

In recent years, the report continues, the average annual cut of live saw timber in the study area has been approximately 900 million board feet measure. This is well over the net growth and the potential growth in the area but it constitutes good forest management, according to the report, because it means the harvest of mature and over-mature timber before it becomes unmerchantable.

The study proposes that any plant established in the area should at first rely on mill residue because it is presently the cheapest pulpwood. However, it points out, resulting increased pulpwood requirements would eventually force the price up so that it would become more economical to employ pulpwood from other sources, such as logging residue, forest thinning and farm woodlots.

Low-Cost, Open-Air Oxidation Lagoons Subject of Study

Corvallis—Possibilities for using low-cost, open-air waste oxidation lagoons for sewage disposal in Western Oregon will be studied during the next two years by the Oregon State college engineering experiment station in cooperation with the state sanitary authority and the city of Corvallis.

The lagoons, inexpensive to build and operate, are being widely used in the Midwest and southwest by small communities and industries which are unable to afford sewage treatment plants. Other larger communities are using them to expand existing facilities. Reductions in sewage disposal costs of from \$10 to \$20 per capita have been reported.

Results Favorable
Results with the lagoons in other sections of the country have been favorable but the OSC study will be the first made in this type climate.

Fred J. Burgess, assistant professor of civil engineering, will be project leader. Fred Merryfield and Warren C. Westgarth of the same department will also work on the project and Gerald Whitney, Corvallis graduate student, will study the lagoon in its first year of operation as his graduate thesis project.

A two-acre lagoon with varying depths to three feet will be constructed at the Corvallis sewage treatment plant for the experiment. Treatment of both raw sewage and primary sewage effluents will be studied.

Other phases of the experiment will include study of the amounts of wastes that can be handled; survival in the lagoon of organisms and other bacteria associated with potential health hazards; prevention of odor; seasonal problems, and feasibility of using the lagoons for treatment of colored food processing wastes, such as red beets, that upset the operation of sewage plants.

The state sanitary authority has allocated \$5,135 for construction of facilities and will pay part of the operating costs. Corvallis will furnish the land, sewage, utilities and some technical assistance under leadership of the OSC engineers.

12 Smokejumpers Reach Half Way Mark in Training

Cave Junction — The half way mark in the training program for the 12 new smokejumpers at the Siskiyou Aerial Project was the first training jump made from an 2,000 foot altitude over Seat's field Wednesday.

This was the first of the seven practice jumps required before a man is qualified to jump at a fire. His first training parachute jump is the culmination of more than two weeks of the most exacting training which includes daily calisthenics, orientation, guard school and days of parachute preparation.

Qualified Applicants
Smoke jumper candidates are selected from the most qualified applicants received each year, carefully screened according to the following guides: must be between ages 18 and 28; weight between 130 and 190 pounds; height between 5 foot 5 with 6 foot 3 inches maximum; must possess good hearing, eyesight and be in sound physical health capable of performing arduous duties; must have one season of at least three months of fire suppression work or one season of woods experience with fire suppression training.

A half hour of calisthenics everyday is given to the entire personnel, experienced men as well as trainees. This conditioning is designed to strengthen back, leg and arm muscles, develop muscular coordination and to provide practice in parachute landing techniques. The training is conducted at the Illinois Valley Airport under the direction of Jim Allen, an experienced parachute instructor.

After five days of guard school and orientation, the trainees are ready for tower jumps. The tower is constructed with platforms on two levels, the first being about 14 feet high and the second is 24 feet from the ground. This tower jumping familiarizes the men with the feel of being dropped from mid-air and of being stopped short in the fall.

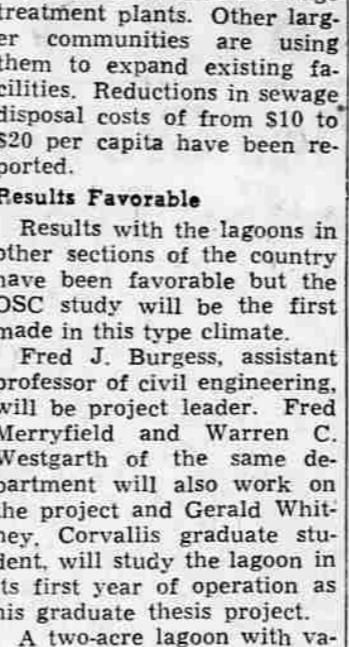
Tempo Picks Up
In the second week of training, the tempo picks up and tree climbing sessions are added to the classes. Instructions in tree climbing will begin with two hour classes and be stepped up to as high as four hours in one day. A total of ten hours of tree climbing is given during the program. The last practice jump is made in timber.

Along with the tree climbing instructions in "let downs" are added. This is to prepare the smokejumper against the possibility of landing in a tree top when jumping at a fire.

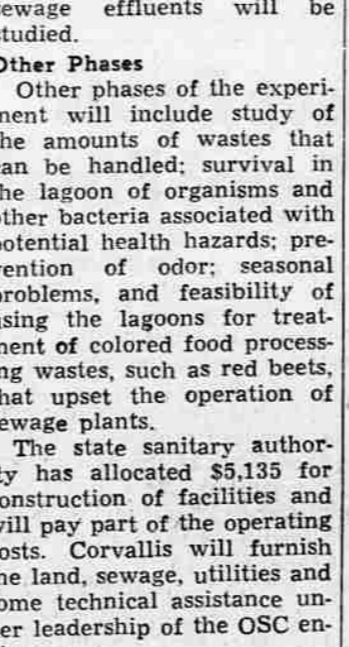
In the last stages of the training program, the men are drilled in woodsmanship, small and large fire suppression, crew action, first aid and safety practices.

HOUSE CLEANING FINISHED AT CAMP BY MEDFORD LIONS

Spring "house cleaning" was recently completed at Low Echo, Girl Scout camp at Lake of the Woods, by members of the Medford Lions club.



CARPENTRY WORK—Tony Capello (left) and Jim Dziarmaga rebuild a porch on one of the buildings at the Girl Scout camp at Lake of the Woods during the recent work day at the camp by members of Medford Lions club.



BOAT DOCK—Andy Anderson (left) and Dr. Robert L. Harland, Medford Lions club members, repair the boat dock at the Girl Scout camp at Lake of the Woods recently during a work party of the club members.

Revised Bill on Ferrochrome Still In Preparation

Cave Junction — A report from the representatives of the Cal-Ore Chrome Producers association who have been in Washington since May 19, reveals the work done and still to be done on behalf of the chrome miners.

Bruce Manley, Medford attorney, and president of the association, is still in Washington attempting to expedite the preparation of the revised bill on ferrochrome co-op plan for presentation in the House.

The framework for the bill was developed by Joe Holman, Manley and Hollis Dole. They have altered and expanded Dole's original suggestions made in Washington in March when he appeared as an industry witness. At that time, Dole made a proposal for a ferrochrome plant using newly mined domestic ores to maintain chrome mining on the West Coast.

Original Plan
The original plan was based on a feasibility study which the department of geology and mineral industries and the Oregon department of planning and development had made by Ivan Block and Associates of Portland.

The revised plan assumes that the chrome producers will form a co-op group which will become a sound legal corporate entity along the established plans approved for such ventures. It will require an act of Congress which will provide for the government to buy a reasonable amount of ferrochrome from the co-op over the period of the next five years.

It suggests that the total amount of the purchase be not less than \$25 million. Such a purchase over this period of time would guarantee a market and would provide a credit background for the co-op through normal banking channels for immediate operations.

More Money
It will take no more money to handle this plan than Senator Murray's adaptation bill calling for a bonus payment of \$46 per ton and it has the advantage of giving the taxpayer something of value for his money. It also permits actual long-range planning and assures a degree of permanence which neither Secretary of Interior Seaton's stabilization plan nor Murray's adaptation does. It also permits

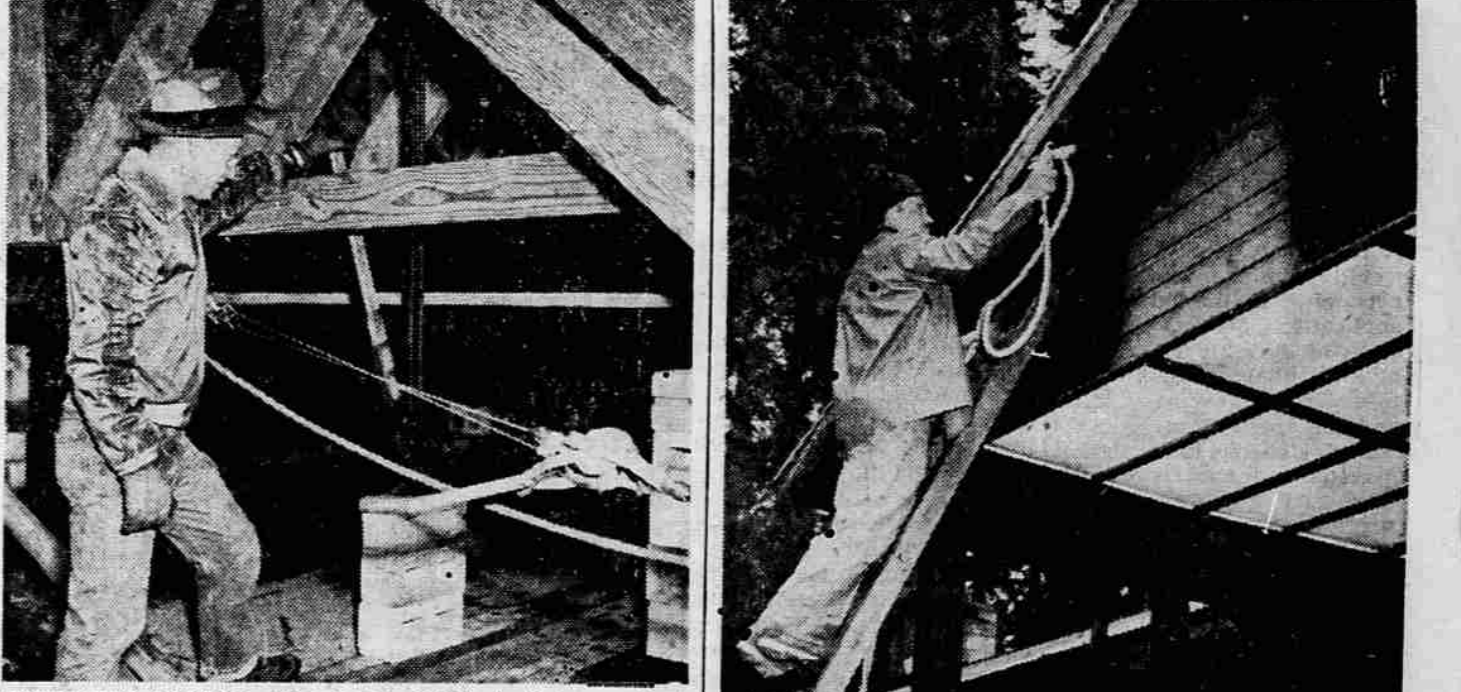
HOUSE CLEANING FINISHED AT CAMP BY MEDFORD LIONS



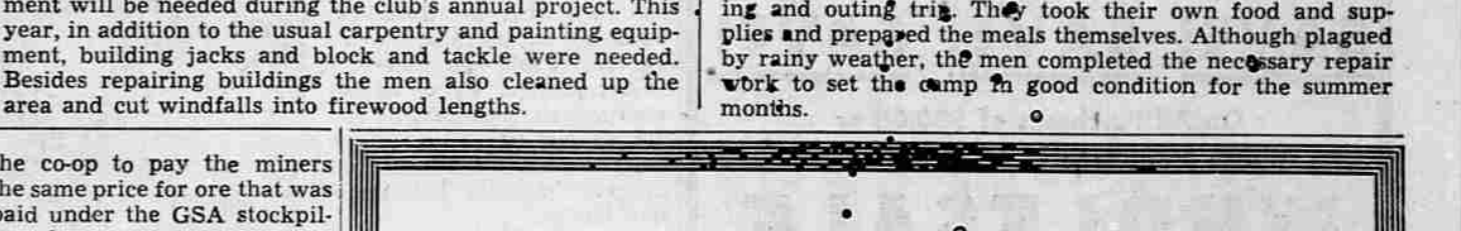
CARPENTRY WORK—Tony Capello (left) and Jim Dziarmaga rebuild a porch on one of the buildings at the Girl Scout camp at Lake of the Woods during the recent work day at the camp by members of Medford Lions club.



BOAT DOCK—Andy Anderson (left) and Dr. Robert L. Harland, Medford Lions club members, repair the boat dock at the Girl Scout camp at Lake of the Woods recently during a work party of the club members.



SHELTERS RAISED—Heavy snowfall last winter crushed several of the sleeping shelters at the Girl Scout camp at Lake of the Woods. Above Allen Jewett, one of the party of Medford Lions club members who renovated the camp for summer occupancy, helps jack up one of the fallen shelters. Prior to the work party each year, a scouting party of club members go into the camp over the snow to check conditions and plan the work needed to be done. The scouting party also determines what tools and equipment will be needed during the club's annual project. This year, in addition to the usual carpentry and painting equipment, building jacks and block and tackle were needed. Besides repairing buildings the men also cleaned up the area and cut windfalls into firewood lengths.



PAINTING — Tom Eslinger, project chairman of the Medford Lions club of the work days at Girl Scout camp at Lake of the Woods, sprays paint one of the buildings. The 17 men who worked several days at the camp getting it ready for occupancy used the event as a camping and outing trip. They took their own food and supplies and prepared the meals themselves. Although plagued by rainy weather, the men completed the necessary repair work to set the camp in good condition for the summer months.

Confidentially Yours: E-ZONE Hearing Secret

Men and women hear again with nothing in either ear through thrilling Sonotone research discovery. Only YOU will know your E-Zone secret of fanstastic hearing aid completely concealed in stylish glasses. Yet you use both ears (just as normal people do).

*E-Zone: Everything worn at EYE-EAR level, nothing worn anywhere else.

SONOTONE

C. R. ADAMSON, Manager 839 East Jackson—Phone SP 2-5904

the co-op to pay the miners the same price for ore that was paid under the GSA stockpiling plan.

At the present time a bill is being prepared on the ferrochrome plan for presentation to the House. It was found more desirable to go through the House as other bills presented by Senators Morse and Neuberger met with considerable resistance in the Senate interior Committee as well as in the Department of Interior.

Sen. Clair Engle of California has been asked to present the bill within the next week or ten days and will call for hearings on it in the House Interior and Insular Affairs committee immediately thereafter.

West Germany's shipyards launched 323 ships with a total tonnage of about 1,100,000 tons in 1957.

Poison Oak?
Try a Bottle of ZEMACOL
You must be satisfied or your money cheerfully refunded. Get a bottle today at WESTERN THRIFT

Finest Modern Facilities

Conger-Morris continually strive to provide the finest of facilities. Here, to make yours a beautiful Memorial, you will find the

- Orchid, Gold Green, Deep Blue
- Private Business Offices
- Arrangement Rooms
- Ballroom
- Family Room
- Members Chapel

Conger-Morris FUNERAL DIRECTORS
WEST MAIN AT SIXTH

"Your TV Weatherman" KBE-TV Monday thru Friday, 5:00 p.m.

ASHLAND MORTUARY
4th and C Streets, Ashland

Member National Selected Morticians by Invitation