

**Missing Yacht
Thespian Found
Drifting at Sea**

Tokyo—(UPI)—A Japanese coast guard vessel found the missing Los Angeles yacht "Thespian" drifting helplessly in the east China Sea off Korea today and began towing her to southwestern Japan.

Coast guard headquarters at Moji said the Thespian, with director-magician John Calvert and four other persons aboard, should reach Hakata port by noon Friday.

Capture Feared

The sleek, white, 112-foot yacht was feared missing since last Friday, June 20, when it failed to show up at Hakata. There was even speculation that it had been seized by Chinese Communists after it set out from Keelung on north-eastern Formosa ten days ago.

The Japanese patrol boat Isuzu sighted the Thespian in the east China Sea about 20 miles off Cheji Island near Korea's southeastern coast. Aboard were Calvert; his mother-in-law, Mrs. Conrad Lowe; Mr. and Mrs. Joseph Iverson, owners of a Chatsworth, Calif. movie ranch; and Army SP3C Thomas E. Jones, on leave from his station on Formosa.

**New Drug Aids
In Mental Cases**

San Francisco—(UPI)—Two California doctors are using a potent drug that quickly releases long repressed memories and unconscious emotional conflicts.

The doctors said the drug, LSD-25, works in a few moments and dramatically speeds the treatment of mental disease. They said it does not cure mental disease or a neurosis but "must be used within the framework of conventional psychotherapy."

The researchers are doctors Sidney Cohen and Betty Grover Eisner of the Veterans Administration neuro-psychiatric hospital in Los Angeles. They told of their work to the American Medical Association.

The drug was tried out on 22 patients. It cost about a dollar a treatment.

"A patient often re-experienced repressed events with such vividness and force that they were described as having been relived," they said. "At the same time, he could witness these incidents with some detachment."

Under standard sessions of psychoanalysis, a patient sometimes takes thousands of hours to recall repressed memories.

**Veteran Actor
Has High Fever**

New York—(UPI)—Veteran actor Alfred Lunt was in New York hospital today for a check-up. He had a high fever Wednesday night which caused him to miss the evening performance of "The Visit."

Lunt, 65, had stayed at the theater after his matinee performance Wednesday to rest for the evening show as is his custom. He was taken to the hospital shortly before the 8:30 p.m. curtain when he complained of feeling feverish.

He currently is co-starring with his wife, Lynn Fontanne, in "The Visit." His role Wednesday night was played by his understudy, John Wise.

The hospital said no information on Lunt's condition would be released until later in the day.

**Western Churches
Said Gaining Strength**

Portland—(UPI)—The pastor of the National Presbyterian church in Washington, D.C. where President Eisenhower worshipped, said Wednesday night the church of the western world was gaining in number and strength.

Dr. Edward L. R. Elson spoke to a crowd of more than 3000 persons at a rally at the Public Auditorium.

He said that if this country is to assume world leadership, "America must become a great bastion of spiritual power."

LOADED PIE

Knoxville, Tenn.—(UPI)—The pie on Mrs. Vermell Hudson's kitchen stove was really loaded. Police, raiding her home, dug through the crust and found a bottle of whiskey. Mrs. Hudson protested in court Wednesday that she did not know who threw in this extra ingredient. The judge, believing she did it herself, fined her \$25.

The U. S. accounts for more than 60 per cent of the world's oil consumption outside the Iron Curtain.

TIME for VEGETABLES

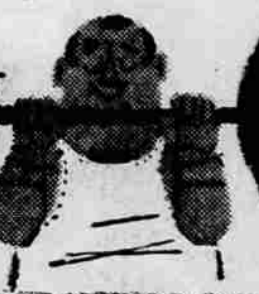


All Produce Guaranteed!

Piggly Wiggly

MIGHTY GOOD VALUES!

HIGH QUALITY AT LOW PRICES

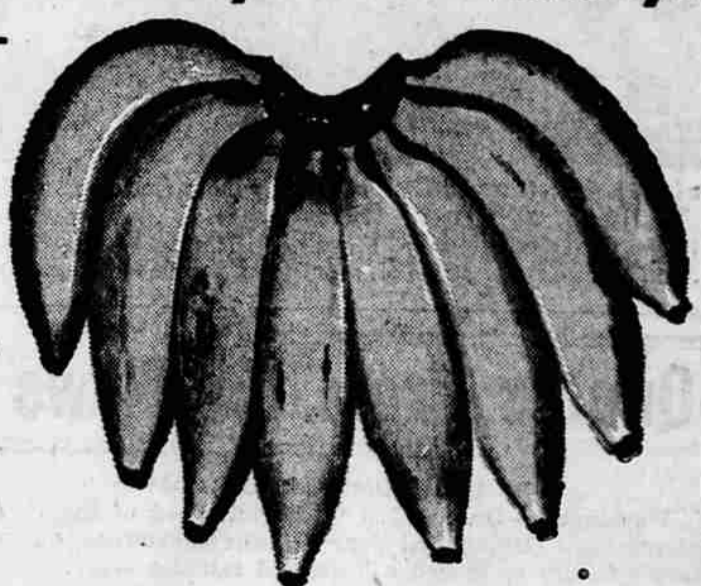


PLUS GREEN STAMPS

Prices Good Friday and Saturday!

CRISP, GREEN
CELERY
19¢ bunch

FIRM - RIPE
BANANAS
2 lbs. 25¢



TOMATOES Large Red Ripe **19¢** lb.

Seedless GRAPES **25¢** lb.

PEACHES Red Haven **2 lbs. 29¢**

No. 2 1/2 Tin GOLD HILL

Sliced Elberta PEACHES

Packed in Medford

4 FOR 89¢

VAN CAMP'S

TUNA

Chunk Style—1/2 Flat Tin

4 FOR 89¢

DUNDEE—No. 303 TINS

APPLE SAUCE

4 FOR 49¢

PIGGLY WIGGLY CHOICE MEATS

PICNICS

ARMOUR STAR TRULY A GOOD VALUE

35¢ lb.



VELVEETA 2 LB. LOAF **89¢**

SWEET PICKLES HEINZ FULL QUART BOTTLE **49¢**

PLYMOUTH

Margarine

REG. 2 lbs. 45c

6 LBS 1⁰⁰

REG. 3 for 29c—WAG

DOG FOOD

12 tins 1⁰⁰

Family Size—HUNT'S

CATSUP

Large 20-oz. Bottle

2 FOR 39¢

SLICED BOLOGNA

49¢ lb.

Country Style PORK SAUSAGE

59¢ lb.

COFFEE HILLS BROS. 1 LB. TIN **89¢**—2 LB. TIN **\$1⁷⁷**

NESTLE'S SEMI-SWEET **CHOCOLATE MORSELS** 12-ounce Pkg. **49¢**

U.S.D.A Choice Center Cut Chuck

ROASTS

69¢ lb.

J.S.D.A. CHOICE SHORT

RIBS

39¢ lb.

PIGGLY WIGGLY

FRESH **Ground Beef** **3 LBS 1⁵⁹**

STEWART AT KING STS. • Open Every Day Until 9 p.m. • Free Parking • STEWART AT KING STS.