

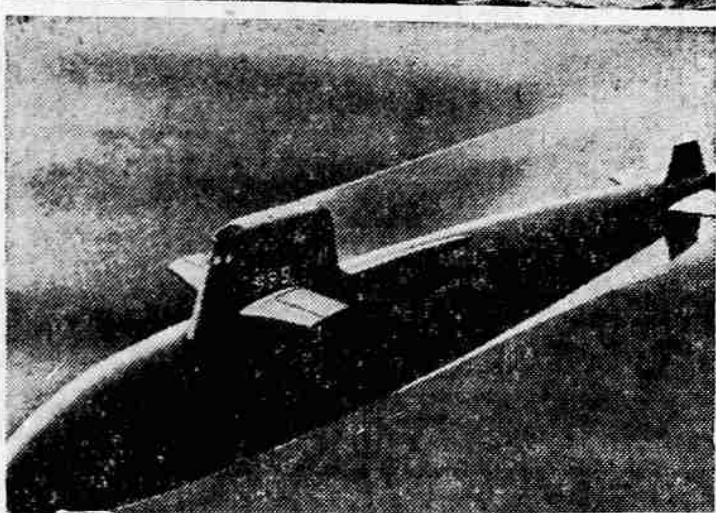
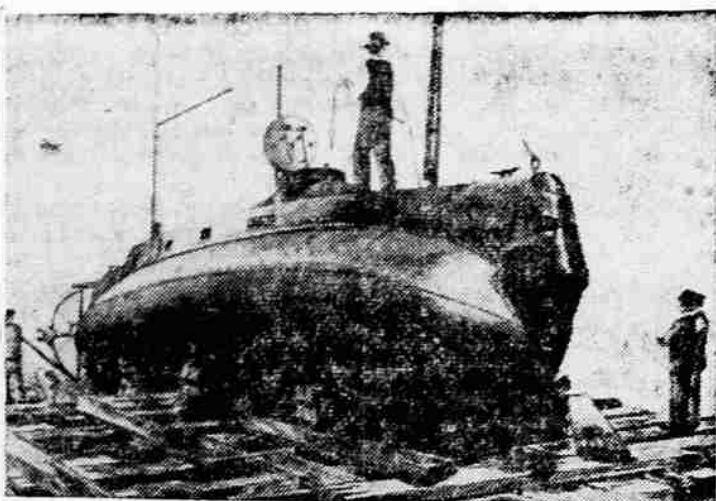
6.8 Per Cent Rise In Enrollments at Colleges Expected

Portland — A Forecast of a 6.8 per cent rise in enrollment next fall at the eight campuses controlled by the State Board of Higher Education was made at a meeting of the Board here this week. This would bring enrollment at the tax-supported campuses to 21,560. The figures, broken down, predicted 8400 at Oregon State, 6100 at Oregon; 3500 at Portland State; 935 at Oregon College; 975 at Southern Oregon; 720 at Eastern Oregon; 582 at the Medical School and 348 at the Dental School.

The 1958-59 operational budget was placed at \$33,945,000, including \$24,192,000 for instruction and general purposes and \$9,753,000 for statewide public services.

Budget Deficiency
Chancellor John R. Richards said the new budget would boost salaries for only 133 teachers. He said these raises were accounted for by savings resulting from staff turnovers. Lack of money to add enough teachers was pointed out as a major deficiency in the budget.

Dr. O. Meredith Wilson, president of the University of Oregon, disclosed plans to acquire about 20 acres at the western edge of Eugene for future married student housing.



THE FIRST AND THE LATEST—The U. S. Navy Submarine Service is taking the opportunity of its 58th birthday to look into its past and into its future. The 54-foot USS Holland (top) was the first sub the Navy had. At bottom is an artist's conception of the USS Skipjack, the submarine of the future. The Skipjack combines the full features of the whale-shaped Albacore and the proven nuclear engine of the Nautilus. (Official U. S. Navy Photo)

117 S. Central

Phone SP 3-7301

9:30 to 5:30, Mondays 'til 9

WHEN ALL AMERICA SHOPS AND SAVES

WARD'S WEEK

SALE ENDS SATURDAY, APRIL 26

**EVERY WATER HEATER—
SALE
PRICED**

SALE ENDS SATURDAY!

**42 Gal. Electric
79⁸⁸**

Reg. 89.95

ELECTRIC HEATERS
Fully automatic, U.L. appr. Non-rust galvanized steel tank. 5 yr. guar.

52-gal. Galv., Reg. 102.95
now 89.88

Glass-lined—10 yr. Guarantee
30-gal., Best, Reg. 92.95
now 82.88

40-gal., Best, Reg. 109.95
94.88

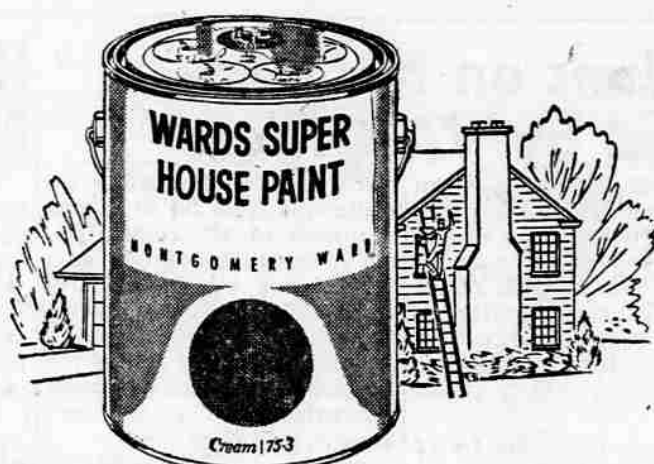
50-gal., Best, Reg. 124.95
109.88

40-gal., Hi-Recovery,
Reg. 119.95, now 99.88

50-gal., Hi-Recovery,
Reg. 134.95, now 114.88

Extra \$20 Bonus Allowance on Hi-Recovery Models

Sale! Certified Paint



Save 1.70 Wards Best Linseed Oil Base Paint

4.09 PER GALLON IN ONE OR FIVE GAL. CAN. REG. 5.79

CHOICE OF WHITE OR ELEVEN LOVELY COLORS



Wardflex Wall Paint

per gal. **4.22**

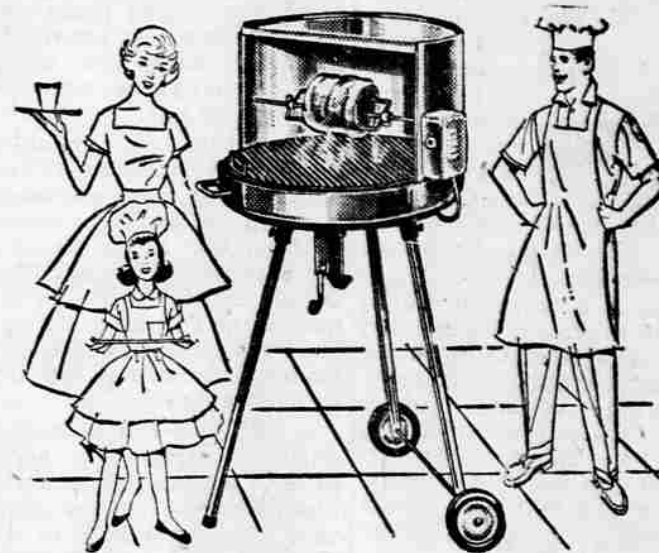
Dries in 1-hr! Leaves no paint odor! 72 colors. Easy to clean!

\$6.59 Thixotropic

gal. **5.33**

"Jelled" Satin Enamel needs no thinning, stirring. Kitchen, bath. 1.98 qt. 1.68 TREDPRUF porch-floor finish. Use indoor, outdoors. QUART 1.28 GALLON 4.48

REG. 1.29 THINNER
99¢ gal.



Don't compare this barbecue with cheaper, skimpily made outfits!

24" Coppertone bowl, hood. Chromed grill adjusts with crank. U.L. approved motor, polished legs.

17⁸⁸



Reg. 51.95 New Coppertone finish

46⁸⁸

Stainless steel reflector in hood! Storage shelf. 8" wheels, adjustable fire pan. U.L. app. motor.

SALE 10-LB. BAG CHARCOAL

78¢

Fast - starting, clean - burning! Handy briquet size! Buy several!

From Holland
—a wonderful chocolate drink flavor



Borden's new Instant Dutch

Only drink of its kind with extra vitamins B₁, B₂, D, Iron!



Borden's new Instant Dutch is the most delicious summer drink ever.

Mixes instantly in **HOT** or **COLD** milk!



Scientist Alarmed By Overconfidence In Lung Cancer Link

BY DELOS SMITH
United Press Science Editor
New York — A world-renowned scientist has spoken out in alarm against "a spirit of overconfidence" which is causing scientists and scientific organizations to believe cigarette smoking has been proved to be a cause of lung cancer beyond quibble or doubt.



Delos Smith

The so-called "proof" is not proof at all, according to Sir Ronald Fisher, professor of genetics at Cambridge University and until recently visiting professor at Michigan State University, East Lansing. The "proof" is statistical and Sir Ronald's renown is in statistics. He is often called "the father of modern statistics."

The alarming thing about this "overconfidence," he continued, is that it blocks scientific research which could either verify or destroy the "proof," and other scientific studies that could really find out why lung cancer rates have increased so much during the past 50 years.

Had Detrimental Effect

"The worst effect of that overconfidence, so far, is that it seems to have held back the various teams of workers," he said. "They are well supplied with money—the British Medical Research Council is not stinting money on cancer research and the American Cancer Society is obviously exceedingly well supplied with money."

"And yet, I think nothing but overconfidence that they had found the solution, that could have prevented them from following up more of the other lines of inquiry which are much needed."

He pointed to one facet of the British Hill and Doll statistical studies upon which some of the case against cigarette smoking is based. In their very first study, those statisticians asked both cancer patients and patients with other diseases, "Do you inhale?" Surprisingly, there were fewer inhalers among the former than the latter.

On the face of it, you'd think inhalers would be more prone to lung cancer than non-inhalers — if cigarette smoking and lung cancer are truly associated. "So," continued Sir Ronald. "Our evidence about inhaling is embarrassing and difficult. It would look as though, if one could make the inquiry by comparing people who smoke the same number of cigarettes, there would be a negative association between cancer and

inhaling. It seems to me that the world ought to know the answer to that question.

Another inquiry he thought it was urgent for science to make, was the part the hereditary make-up of the individual (or lack of it) to lung cancer. The statistical studies suggested that these genetic differences exist, but the suggestions haven't been followed up.

He also was impressed by "the very striking fact that at the same level of cigarette smoking, dwellers in towns have considerably more lung cancers than dwellers in the country." The Hill and Hill reports, as well as the American Hammond and Horn reports, showed these differences, yet "I don't know any extensive piece of research which has been set on foot to get to the bottom of that important difference."

Sir Ronald set forth his views in Michigan State University's "Centennial Review of Arts and Science."

Major Crimes Set All-Time Record

Washington — The FBI reported today that major crimes in the United States hit an all-time high last year. FBI Director J. Edgar Hoover said there were an estimated 2,796,400 major crimes in 1957 — one every 11.3 seconds. The figure represented an increase of 233,250 over 1956.

The FBI's Uniform Crime Report for the nation's police departments showed:

— Persons under 18 accounted for 47.2 per cent of the crimes of murder, manslaughter, rape, robbery, aggravated assault, burglary, larceny and auto theft.

— Arrest of persons under 18 increased 16 per cent in cities under 25,000 and 8.1 per cent in cities of 25,000 or more.

Sonotone Manager Gets Commendation

Charles R. Adamson, manager of the Medford office of the Sonotone corporation, has received a special commendation from the president of the firm marking his 20th year with the company.

He is one of three district men with the firm more than 20 years. The Medford Sonotone office is located at 839 East Jackson st.

Adamson said the hearing aid has progressed from ear trumpets to a one-half ounce unit which fits in the ear. This unit requires no cord bridge or separate button, he noted.

BUY NOW! PAY CONVENIENTLY BY THE MONTH!



FREE!
16-pc. Melmac plastic set for 4, reg. 8.95

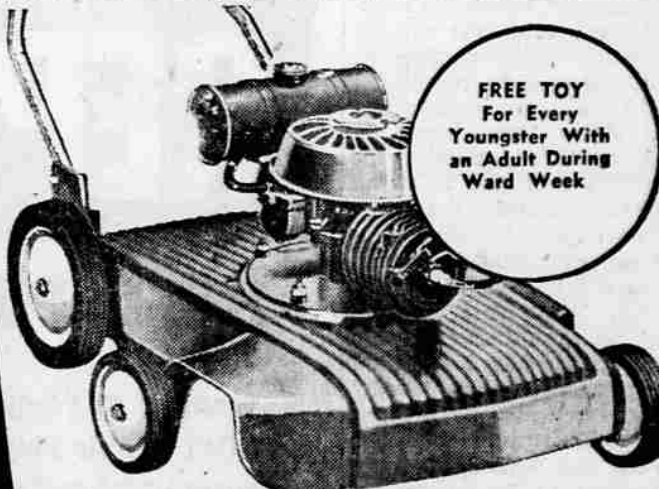
Free Melmac ware with usual 59.95 66-pc. set imported china for 8

Cottillon and Rose Chintz shown—just 2 of lovely patterns available with free offer! All first quality, translucent; all open stock. 4 extra cups. **39⁹⁵**
\$4 DOWN



Reg. \$112 white 3 pc. bath set choice of 4 1/2 or 5-ft. steel tub \$69

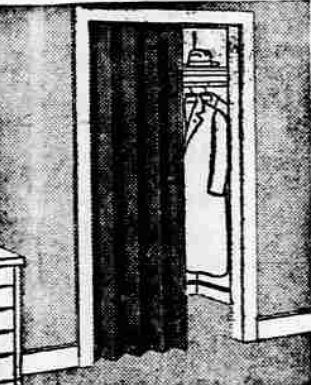
As low as \$5 a month, on terms. Set includes stain-resistant vitreous china lavatory and toilet; steel tub. Better Quality, 126.50, now \$99 LESS TRIM



FREE TOY For Every Youngster With an Adult During Ward Week

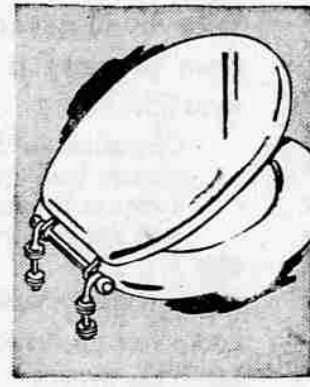
18" Rotary Mower with 2.2 H.P. Engine. Lightweight, easy to push

Check these features! Adjustable cutting height, front discharge. Easy storing handle. Positioned wheels for close side trim. See it today! **44⁸⁸**
\$5 DOWN



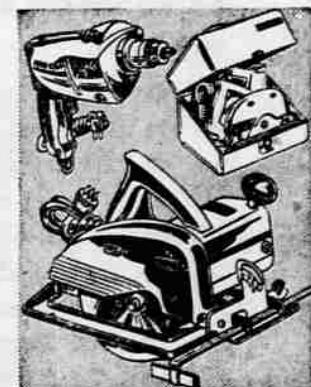
Sale! Esquire folding door
30-IN. WIDTH **7.44**

Wards Esquire economy door saves space, has many uses. Single-thickness plastic fabric.



4.95 enameled wood toilet seat
NOW **3.33**

Pressure-molded wood and plastic, solid surface. Choice of 5 gleaming enam. colors, and white.



Saw, drill, and case combination
Regularly \$60.85 **42⁸⁸**

You save \$17! Powerful 6" saw, a 1/4" double reduction gear drill, and steel carrying case.



1 1/2-in. Plastic pipe
Finest made... Dupont's "Alathon 25". 100 lbs. pressure at 73°F. **8c** PER FOOT



Wards waste disposer
For cleaner kitchens. Surgical steel cutting parts... fast, quiet. **4888**
Reg. 54.95



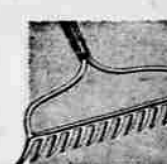
Reg. 12.95 garden barrow
Lightweight, square nose for easy handling. Oilite bearing. **8.44**
4 CU. FOOT



26.98 Plastic Tile Kit
Choice of 18 colors in permanent plastic. Trim, mosaic, cleaner included. **1988**



Reg. 6c Non Metallic Cable
12/2, lightweight, flexible. Resists decay. Reg. 5c-ft. 14-2 3c **3 1/2¢** ft.



14-tooth bow rake
A gardening must! 2 1/4" teeth have strength and spring. **1.66**
5" HANDLE

WARDS YOUR STORE FOR TOP QUALITY AT LOW PRICES

REVIVAL
APRIL 20 thru 27 - 7:30 p.m.
FIRST SOUTHERN BAPTIST CHURCH
794 Lozier Lane—Medford, Ore.

Rev. John Goss Evangelist
Maynard Hadley Musical Director

NURSERY OPEN — Inspiration, Song, Fellowship