



Diamond Salesman Weisfield's Head

Harry L. Potter, diamond salesman for Weisfield's Jewelers in Medford, has been named manager of the store, replacing John Nuich, who resigned.

Nuich has accepted the position of manager of Andy's Jewelers. He said the move was made because his family's enjoyment of the Rogue valley and because of the new opportunity given by Alton Anderson, owner of the firm.

Nuich has lived in Medford two and one-half years and has 12 years' experience in the retail jewelry business.

Potter, who has lived here with his family the past one and one-half years, was transferred from the Eugene Weisfield store.

Bermuda Race To Start June 14

The 21st biennial ocean race to Bermuda will start from Newport, R.I., June 14, with what is expected to be the biggest fleet ever to participate in this 635-mile "Queen of Blue Water Races," according to Daniel D. Strohmeier, Scarsdale, N. Y., chairman of the Ocean Race Committee of the sponsoring Cruising Club of America.

It is anticipated that the 1958 Bermuda Race entry list will easily top the record of 87 which started the last event two years ago. That "thrash to the Onion Patch," as the race is colorfully called, was won by the 38-foot yawl Finisterre, owned by Carleton Mitchell, Annapolis, Mr. Finisterre, typical of the modern "fat duck" type of racing yawls, is expected to be on hand this year to defend her title.

Conditions of the race, which is co-sponsored by the Royal Bermuda Yacht Club, will not be changed much from those prevalent in 1956, Strohmeier said, although the committee will probably tighten several of the safety requirements.

The fleet, which may top 100 sailing craft, will be divided into four classes based upon handicap ratings calculated with the complex rating rule of the Cruising Club of America. The larger boats will fall into Class A while the smallest will be in Class D.

The American Boatbuilding Corp., has indicated that seven new fiber glass yawls of the 40-foot Vitesse class built this year in its East Greenwich, R.I., yards, will probably be entered in the event.

Other entries will probably include such former Bermuda Trophy winners as race committee chairman Strohmeier's 39-foot Malay, 1954 victor, William S. Moore's Argyle, from Oyster Bay, N.Y., which won in 1950 and Howard Fuller's Gesture, hailing from New London, Conn., which won in 1946.

Clues Sought To Identify Woman

Burlingame, Calif. — (AP) — Police hoped today that an examination of dental charts might turn up a clue to the identity of a light re-haired woman whose body was found in a clump of weeds near a lover's lane.

The body, clad only in a black and white tweed coat, was found by a group of children playing in a wooded area near the Skyline Boulevard.

Coroner Paul Jensen said the woman probably had been dead about a year. He said a normal autopsy would be almost impossible.

"It certainly looks like murder," Jensen said.

The badly decomposed body was taken to the county morgue in San Mateo.

Jensen said the woman was white, about 5 feet 2 inches, 110 to 120 pounds, with straight, tinted red hair, high cheek bones and narrow set eyes.

EXTRA!
Top Values in FINE FOODS
at PIGGLY WIGGLY

Locally Packed — Gold Hill
 ELBERTA
PEACHES
 Halves Packed in Heavy Syrup
 No. 2 1/2 TIN
4 for 85¢
 Case of 24 . 4.98

EXTRA · VALUE · EXTRA
 DUNDEE CUT
GREEN BEANS
 REG. 16c
3 for 39¢

LIBBY'S — 12-OZ. TIN
Corned Beef
 REGULAR 49c
2 for 85¢

PLYMOUTH
MARGARINE
5 lbs. 1⁰⁰

KRISPY CRACKERS SUNSHINE — 1-LB. PKG. **29¢**

CUP CUSTARD COOKIES SUNSHINE — 1-LB. PKG. **49¢**

Chocolate Covered MINTS SUNSHINE — 10-OZ. PKG. **39¢**

BONNIE
Dog Food
12 PACK 1³⁵

M. J. B.
COFFEE
 1 LB. TIN **92¢**
 2 LB. TIN **\$1⁸³**

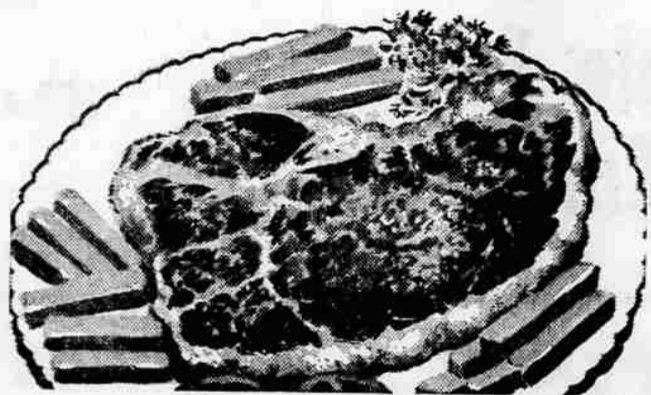
ZEE BATHROOM
TISSUE 4 ROLL FAMILY PACK **35¢**
 ZEE HOUSEHOLD
PAPER TOWELS Giant Size **29¢**
 ZEE HEAVY
WAX PAPER 100 Ft. Roll **2 for 45¢**
 ZEE—80 COUNT
PAPER NAPKINS **3 for 35¢**
 ZEE—PKG. 20's
LUNCH BAGS **2 for 25¢**

NALLEY'S—24 OZ. JAR
BANQUET DILLS
33¢

HI-C—46 OZ. TIN
ORANGE DRINK
4 for 1⁰⁰

PIGGLY WIGGLY Guaranteed Meats

U.S.D.A. CHOICE
 GRAIN FED
BEEF STEAKS



Round Steak FULL CUT lb. **89¢**

T-Bone Steaks lb. **1¹⁰**

SIRLOIN TOP — BONELESS lb. **1³⁹**

KING OF STEAKS
Beef Tenderloin lb. **1⁸⁹**

Genuine Spring
Leg 'o Lamb
89¢ lb.

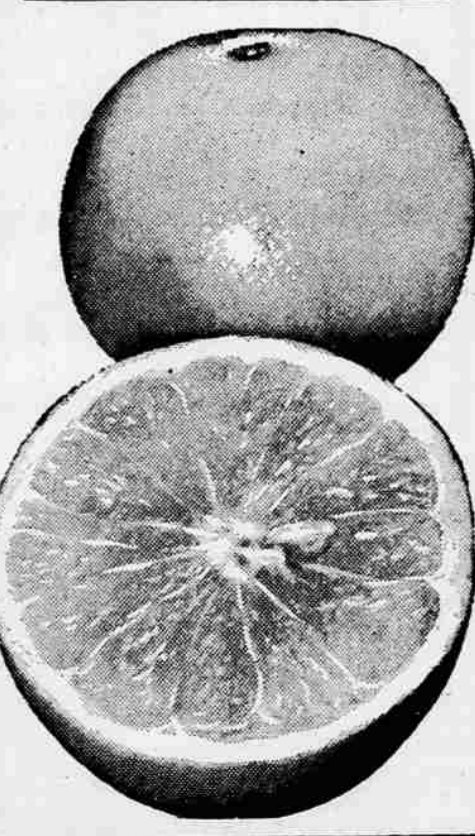
Armour Star
Franks
 1-lb. Cello **59¢**

MOCK Chicken Legs
79¢ lb.

ARMOUR STAR THICK SLICED
BACON 2 lb. pkg. **1³⁹**

sun-packed **PRODUCE** specials!

RED RIPE — SLICING
Tomatoes
29¢ lb.



EXTRA FANCY — LARGE
ASPARAGUS
2 LBS 25¢

Other Fine Produce Buys at Piggly Wiggly:
 • New Peas
 • New Potatoes
 • Egg Plant
 • Fresh Pineapple
 • Fresh Mushrooms
 • Cantaloupe
 • Local Rhubarb

ALL PRODUCE GUARANTEED FRESH!

MEDIUM SIZE — COACHELLA VALLEY PINK
GRAPEFRUIT 6 FOR **35¢**

LEAF LETTUCE
 ROMAINE LETTUCE
 WATERCRESS
 SPRING SALAD SPECIAL
2 lb 25¢

CRISP — GOLDEN
CARROTS 1-LB. CELLO PACK **2 FOR 19¢**

NEW, GREEN CALIF.
CABBAGE lb. **6¢**

PIGGLY WIGGLY

STEWART AT KING STS. • Open Every Day Until 9 p.m. • Free Parking • STEWART AT KING STS.