

Controlled Atmosphere May Be Solution to Quality Problem

Controlled atmosphere storage may be the most logical solution to the problem of maintaining the quality of D'Anjou pears in storage and to meet any late season foreign competition, according to Professor Henry Hartman, horticulturist with Oregon State college.

As it is now, the professor told the audience at the annual pear-meeting here, the quality of the pears after March 15 in storage cannot be guaranteed.

Competition comes from a number of foreign sources. One of those presenting the most serious threat is Argentina. Since their seasons are the reverse of ours their fresh pears hit the peak of the quality in late March and April. The main problem in Argentina has been lack of cold storage. However, the country now has a half a million box capacity and cold storage facilities are now under construction to provide a total capacity of 1,188,000 boxes, the professor said.

Consider Angles

"We cannot rush into this controlled atmosphere storage pell mell," Professor Hartman said. "A number of angles must be considered."

A common practice in this type of storage is to line the packing house room with sheet metal to provide an airtight storage, Hartman explained. However, this costly method may be replaced with a plastic material.

"We don't have all the angles or the exact procedure worked out. It takes about five years to be sure of recommendations for the carbon dioxide content for this type of storage," he added. "We still don't know what the final recommendations will be even though we have been working on this type of thing a little over three years."

Not Sit Idle

"Meanwhile, I do think we have to go into this form of storage in self-defense," the professor commented. "While we are waiting for the final recommendations to be worked out we should not sit idle. We should push all experiments along this line. A pilot plant also is needed so the costs can be figured out for the adoption of this type of storage on a commercial basis."

The professor indicated the present experiment being conducted at Root Brothers pack-

ing plant here is a step in the right direction. Meanwhile, pear storage facilities should be constructed so they can be converted to atmospheric storage."

The professor pointed out that the pear industry should not expect to see the same striking results from the new type of storage as experienced in the eastern apple industry. There the marketability of the MacIntosh apple was greatly increased by prolonging the shelf life of the fruit and maintaining a high level of quality late in the season.

Drainage Problem

Marvin Shearer, irrigation specialist, Oregon State college, told the audience of growers and shippers, "Most of you have a long ways to go in applying water efficiently. The drainage problem you now have is very small compared with what you are going to have."

Shearer said something can be done about it. Proper irrigation also depends on how a neighbor uses water. Naturally, Shearer said, a grower must first become aware of what the problem means to him financially before he starts to do something about it.

Shearer related how dry and wet plot experiments were set up and the results from each. The wet plot resulted in 26 per cent increase in the dry matter and 43 per cent increase in the amount of water in the fruit, he said.

Reports Good Control

L. G. Gentner, entomologist at the Southern Oregon branch experiment station, reported good control of San Jose scale in the dormant period with a combination of either lime sulphur and oil or Poly Sulphide compound and oil emulsion. Parathion applied at the rate of one pound per 100 gallons of water also give good control of scale in the pink stage or later.

San Jose scale consists of a tiny circular blackish to grayish scale found on the wood, the entomologist explained. Underneath the insect remains stationary and continues to suck the sap from the branches to devitalize the tree and kill some of the smaller branches. This means a loss of fruit. The young may settle on the fruit and cause red spots which also may cause it to be culled.

The young appear about the

first part of June. Lately in this area another brood has appeared about the last of September up to the middle of October.

Disease Abundant

This tree disease has been abundant recently because the natural enemies have apparently disappeared. This is mainly the parasitic wasp which lays eggs in the scale.

A delayed dormant application of a combination of lime sulphur or Poly Sulphide compound and oil has given good control of the psylla adults and killed most of the nymphs as they were crawling, Gentner stated.

He also pointed out that the wet plot in 1932 showed a 30 per cent increase in volume of it and 1936 showed a 32 per cent increase in fruit volume. Of course, these experimental results depended on the type of weather—hot or cold—and good root development.

Shearer suggested growers smooth their orchards so water will not stand in pockets. Use of cross ditches is valuable to proper drainage, he said. There is no such thing as partially wetting the soil, he added.

Pear Blight

C. B. Cory, county horticultural agent, discussed pear blight and its control.

The blight has become a problem in this area during the last two years, he commented. During the winter it lives in cankers. Oozing of the sap or sugar from the cankers in the spring draws ants, beetles and flies who spread it through the tree.

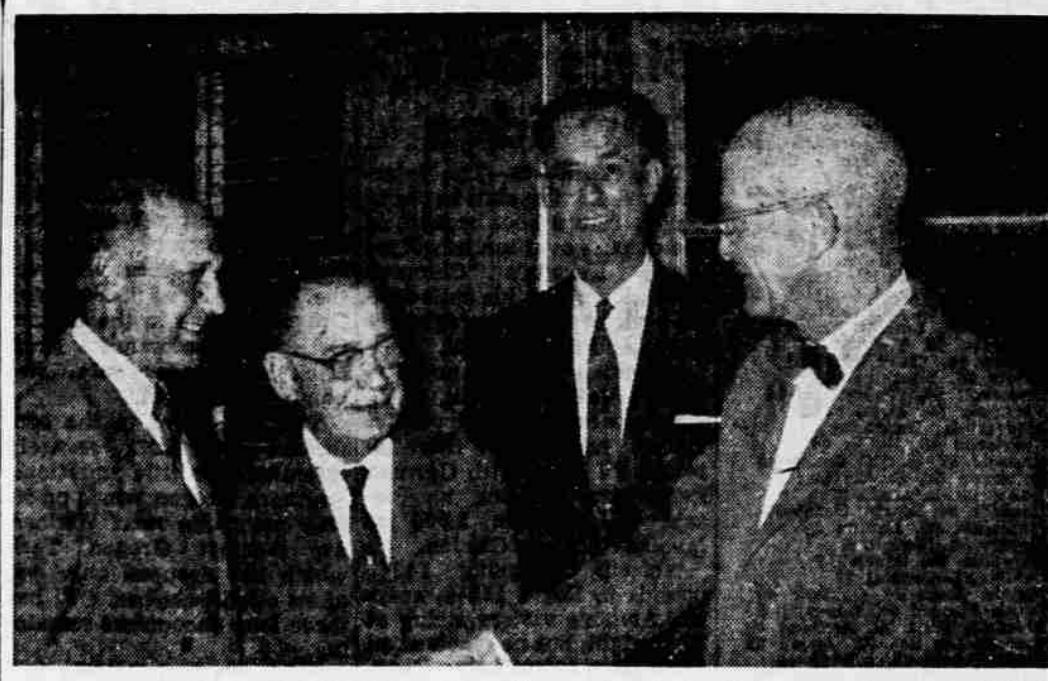
Bees spread it from blossom to blossom. However, after they go back to their hive they will not bring it back out again.

First thing to do is to cut the hold-over cankers before the trees go into bloom, the horticulturist advised.

A hundred per cent of the continued infection results from short cuts, Cory said. Bacteria in about 50 per cent of the small cankers winter over.

A solution of streptomycene and copper should be applied to the trees in spray form when 30 per cent of the blossoms are open, he said. Spray should be applied again when the blossoms are in full bloom. Also, trees should be sprayed again if there are any late clutches of blossoms.

Comparatively little of the



CONGRATULATIONS GIVEN — Harold Holmes (left) president of Medford Pear Shippers, congratulates Prof. Henry Hartman, Oregon State college horticulturist, while Lyle Kinney, president of the Jack-

son County Fruit Growers league, and Shelby Tuttle, manager of Southern Oregon Sales, add their congratulations. The award was presented by Tuttle.

son County Fruit Growers league, and Shelby Tuttle, manager of Southern Oregon Sales, add their congratulations. The award was presented by Tuttle.

son County Fruit Growers league, and Shelby Tuttle, manager of Southern Oregon Sales, add their congratulations. The award was presented by Tuttle.

son County Fruit Growers league, and Shelby Tuttle, manager of Southern Oregon Sales, add their congratulations. The award was presented by Tuttle.

Assessors Have Meeting On Commission Rules

Salem—An advisory committee of county assessors met with the State Tax Commission valuation division here Friday to talk over commission regulations.

Chief Valuation Engineer Harry Loggan said the assessors had some complaints about the commission's log valuation regulations, especially in eastern Oregon.

Some eastern Oregon assessors feel that log values should be lowered about \$5 from last year due to the decline in the lumber market. The commission has ordered the log values kept up.

Loggan said there might be some appeals from the log regulations which were mailed out last week.

The advisory committee suggested that the state's three tax commissioners should meet with county assessors at least once a year to iron out differences of opinion.

Loggan said some minor changes in log regulations suggested by the advisory committee would be studied.

Present for the meeting were John Gault, Harney county assessor and president of the County Assessor's

association; Ray Schumacher, Jackson county assessor; Bob Klein, Lincoln county; Fred Muhs, Yamhill; Glen Horn, Jefferson; Clair Balzer, Sherman; and John Koopman, Malheur.

Dental Equipment Ready For Clinic

Equipment for the new dental clinic in the county courthouse has arrived and will be installed in a room which was vacated last week, Dr. Billy Blackstone, Kiwanis club dental clinic chairman, has announced.

The clinic will open about March 1 and will operate on a permanent basis during the school for needy youngsters. School nurses will determine youngsters eligible.

Income from the Kiwanis Kapers on Feb. 26, 27 and 28 and March 1 will be used to finance the countywide clinic. Dentists in the county will serve without fee for the project.

Nathan Hale was executed as a spy by the British, on Sept. 22, 1776.

DYKE'S
Are
Moving
from 227 E. 6th

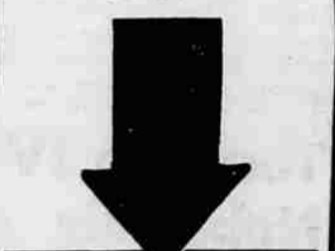


Must
Reduced Stock
by

1 1/2

We believe we can give better service and continue our policy of offering the best floorcovering values in the valley by consolidating our stocks. However, our location at 1228 N. Riverside is not large enough to handle our present inventories.

CLOSING OUT
15 ROLLS
of quality
Broadloom Carpet
at
Greatly Reduced Prices!



ALL WOOL WILTONS
Reg. 11.95 - 13.95
Close Out at Just
\$9.95 Sq. Yd.

AXMINSTERS
Reg. 7.95 to 9.95
Close Out at Just
\$6.95 Sq. Yd.

Tuft Woven WOOLS
Reg. 9.95 to 12.95
Close Out at just
\$6.95 sq. yd.

Stain Proof AVISCO
Reg. 6.95
Close Out
\$4.95 sq. yd.

★ **ROLL ENDS**
★ **REMNANTS**
★ **THROW RUGS**

Have **SHARP** Pencil
... Will Figure!

Terms to Fit
Your Budget
DYKE'S FLOORCOVERING
227 E. 6th

Jorgensen's URGE YOU TO ...
MAKE THAT "DATE" NOW!

Another Big...
KIWANIS SHOW
Medford Senior High
Feb. 26, 27, 28 - March 1

Show starts 7:30 p.m.
Wednesday—Starts at
8:15 p.m. Thursday,
Friday, Saturday

2 FULL HOURS
OF DELIGHTFUL
COMEDY!
MUSIC!

BEST ACTS
TOP TALENT

It's a—
BENEFIT SHOW!

Combine BOTH enjoyment and a helping hand to the Medford Kiwanis Club's new Dental Clinic! Tickets NOW ON SALE from any member of the Kiwanis Club... Get YOURS right NOW!

KIWANIS KAPERS

JORGENSEN'S *Fiesta* ICE CREAM

... and Don't Forget That Tasty
AFTER SHOW TREAT—

NEW LOW PRICE!

WESTINGHOUSE COMBINATION WASHER-DRYER



NOW ONLY \$399.95

ONLY \$3.00 A WEEK AFTER A SMALL DOWN PAYMENT

- THIS COMBINATION HAS EVERY DELUXE FEATURE!**
- Washes Cleaner! Revolving Agitator gets clothes cleaner, rinses better, cleans itself. The identical Revolving Agitator used in every Westinghouse washer made.
 - Faster Drying! Direct Air Flow Drying dries clothes faster, fluffier, thriftier. Saves current because it dries faster.
 - WEIGHING DOOR
 - WATER SAVER
 - FLEXIBLE CONTROL
 - DOOR SAFETY SWITCH
 - AUTOMATIC DRY DIAL
 - DAMP SETTINGS FOR IRONING
 - SAVES SPACE—32" WIDE
 - DRIES FASTER—SAVES MONEY

TRANSMISSION GUARANTEED 5 YEARS

YOU CAN BE SURE... IF IT'S **Westinghouse**

Trowbridge & Flynn Elec. Co.
214 West Main Street Phone SP 3-6241