

Bumble Bees Said Harmed by Sprays; Pollinators Protected in This Area

Bumble bees are now disappearing in Oregon because of widespread use of chemical sprays, according to Dr. W. P. Stephen, entomologist and bee specialist at Oregon State college.

These large colorful bees were once among the state's leading crop pollinators, Stephen said.

Dr. Stephen said he has found bumble bees all but gone from intensive farming areas where sprays are used constantly to check destructive pests.

Referring to this area, Clifford B. Cordy, county horticulturist, said, "We have more native bees around now than we used to have. The types of sprays now being used generally kill only the bees who get into them. He does not carry them back into the nests where other bees may be killed, Cordy explained.

Phosphate Materials
Dr. L. G. Gentner, entomologist at the Southern Oregon Experiment station, said sprays using organic phosphate materials are usually applied after the cover crops in the orchards blossom and go to seed. As little of the organic phosphate materials as possible, which are most injurious to bees, are used in the spraying programs, Gentner said.

These bumble bees do help with pollinating seed crops and are valuable in setting alfalfa seed, the entomologist said. Sprayers covering these crops try to do their spraying early in the morning and late in the evening when few bees are flying.

Explaining the difference between the bumble bee and the honey bee, Gentner said the bumble bee is larger, the size of a thumbnail and covered with hair. Unlike the smaller honey bees they live in nests in the ground. Their young are fed with pollen, instead of stored-up honey.

According to Dr. Stephen, some bumble bees still remain along the coast and in other sections of open land where their ground nests are not exposed to sprays. In those areas, they are particularly useful as pollinators of cranberries, blueberries, and red clover. They are more effective than honey bees on red clover and blueberries and honey bees do not like the cool, wet conditions under which cranberries grow.

While the decline of the bumble bee can't be helped or halted, it can be "lamented," Stephen said, and every attempt made to check indiscriminate spraying that uselessly kill off wild bees. Honey bees are protected by moving them in and out of spray areas, he noted.

Technical Bulletin
Stephen recently published a technical bulletin on bumble bees of Western America and has been given a \$9,500 grant by the National Science Foundation to continue work for another three years. He plans eventually to compile data on bumble bees of the world.

The thing that makes some bumble bees particularly effective as pollinators is their long tongues, Stephen said. The three-jointed tongue is sometimes as long as the bee's body and twice as long as the tongue of the honey bee.

Twenty-four species of bumble bees are found in Oregon. Deserted mice nests are favorite homes for the bees and the big build-up in bees this year may mean more bumble bees next summer.

New Booklet Ready On Tree Planting

Corvallis — Advantages of putting marginal cropland into forest plantings under the Soil Bank program are explained in a new booklet just published by Oregon State college extension service in cooperation with the Oregon state board of forestry and the U.S. forest service.

Copies of the booklet, "Planting Trees Under Conservation Reserve," may be obtained from local county extension offices or the OSC bulletin clerk, Corvallis.

Deadline for putting land under a conservation reserve contract for 1958 is April 15, said Charles Ross, OSC farm forestry specialist. Ross authored the booklet with Carl Hawkes, forest service forester.

Stephen believes. All but new queen bumble bees die with the first frost each fall. The queen overwinters and builds the colony.

Bumble bees vary greatly in behavior and color. Some are vicious, others docile. Unlike the honey bee, the bumble bee can sting more than once. In Oregon, they are mostly yellow and black.

Beef Balloting To Get Review

Salem — Mailed ballots in the beef commission referendum are expected to pour into the state department of agriculture immediately after Feb. 10, Director of Agriculture Robert J. Steward said today. More than 4,000 producers who registered prior to Jan. 21 are eligible to vote.

To be counted, ballots must be postmarked to the department at Salem by Feb. 24, or be deposited by that date in an official ballot box in the office of any Oregon county extension agent, he said.

Because of the wide interest and broad coverage of this referendum, and the heavy vote expected, Steward said arrangements have been made with two prominent Oregonians to serve as a reviewing board for the ballots cast.

One of these is David O'Hara, who retired last year after more than 40 years as head of the elections division for the state of Oregon. The other is E. R. Jackman, Oregon State college range specialist for many years, with wide acquaintance throughout Oregon's cattle industry.

All votes will be cast in sealed ballot envelopes which will be opened and tabulated only at the department headquarters in Salem, Steward said. The reviewing board will check all votes cast upon the close of the referendum period.

NO CAN

Beacon Falls, Conn. — A homeowner, tired of dogs foraging in his garbage can, padlocked the top. He reported later that a canine made off with the whole can.

Joint Conference Slated For Heads Of Food Groups

Salem — At the suggestion of leaders of several of the commodity commissions in Oregon, Director Robert J. Steward of the state department of agriculture has called a joint meeting of all chairmen and administrators for Tuesday, Feb. 18, in Salem.

Steward said the commission administrators are selecting topics which will be discussed at this first joint session, and are drawing up the agenda for the meeting. He said so far he has been advised by one of the larger commissions that it would like to see a discussion on four topics.

Public Relations
Two of these are public relations and titling to the state. Another subject suggested by this administrator is the effect of the term "commission" as a name for commodity marketing organizations. There is a growing sentiment that this term does not clearly identify the commodity groups as being engaged completely in self-help programs for their respective industries.

The fourth discussion topic suggested is the routine clerical and office services which a 1957 law authorizes the state department of agriculture to provide the smaller commissions upon their request. Other topics will be offered for the agenda.

Steward says those who have suggested this joint session are hopeful that if the Feb. 18 meeting proves a success, the commodity groups may arrange to meet together once every three months on a continuing basis to discuss their mutual problems.

Fryer Offices Set For Ag Building

Salem — Temporary offices for the Oregon Fryer commission will be with the State Department of Agriculture at the Agriculture building in Salem. At its Jan. 31 meeting, the commission voted to take temporary advantage of a 1957 law that stipulates commodity commissions may utilize the facilities and services of the state department of agriculture.

A \$55,000 budget for commission operations in the next 18 months was established at the same meeting. The bulk of the money will be spent on promotion, according to the chairman, B. J. Rogers of Springfield.

In its first administrative order, the commission established a March 1 assessment date and made a change in the original rate to differentiate between live and dressed birds.

Chairman Rogers indicated the commission would be interested in hearing from candidates for executive secretary before its next meeting in Salem on Feb. 20, although no final decision has been reached on the creation of a full-time position.

Short Course in Insect Control Set

Corvallis — An intensive short course in damage, detection, behavior and control of forest insects and diseases will be held March 19 to 21 at Oregon State college.

The Northwest Forest Pest Action council and the OSC school of forestry are sponsors. The three-day course will cover the Douglas fir beetle, silver fir beetle, mountain and western pine beetles, engravers, wood borers, spruce budworm and other major defoliators, sucking and cone-seed insects, root and heart decay, foliage and stem diseases.

Other topics will include surveys, general control methods, deterioration of killed timber, and general management problems.

Tonnage Said Higher In Fertilizer Sales

Salem — Oregon farmers used a little more fertilizer in 1957 than in any other year on state records.

Tonnage reports made to the state department of agriculture show 183,719 tons were sold, or 701 tons more than in 1956, the previous high year.

GRAIN MOVEMENT

Salem — More than 9 percent of 4.5 million bushels of wheat unloaded in Portland during January contained smut and more than 23 percent contained foul dockage. This shows up in the monthly report of the state department of agriculture's division of grain inspection. Exports from Portland totaled 3.5 million bushels, mostly wheat, and were down from a year earlier.

--- CHIT CHAT ---

By JOE COWLEY
Mail Tribune Farm Editor

Effective use of commodity commissions to promote consumption of Oregon products by Oregonians and others, forms the big hope for both Oregon agriculture and additional community payrolls, indicated Bob Steward, director of Oregon's department of agriculture. An important meeting will be held in Salem on Feb. 18 with the heads of all the commodity commissions, he told those attending the annual Jackson County Stockmen's association meeting in Central Point Tuesday. At this meeting the various commission representatives will find out where they can agree and work together to develop a joint program.

"We are letting other areas get the value of processing Oregon raw materials," Steward said. "This particularly applies to feeder cattle and lambs. During 1956 we sent out of the state 335,000 head of cattle. Major buyer of Oregon feeder stock was California at 100,000 head."

Steward said he would like to see the feeder operation retained here and the finished product shipped out. Oregon now has a surplus of forage and cereal crops which could be utilized, he pointed out. This state now produces and has available half the total meat products for its own population, the agricultural director said.

Steward said if the state can only "hang tough" the time will come when a large population will consume everything produced here. The period from 1945 to 1957 has registered a 27 per cent increase in population for the Pacific Northwest, he said. However, with this increase of population, there has been a 30 per cent decrease in dairy cattle, a 41 per cent cut-back in hogs and 21 per cent drop in the number of sheep raised.

"Meanwhile, we have to tool up for expanding requirements of the increasing state population," Steward said. "Helping with this advance planning is Julius Jensen and his newly created state planning and development office."

By June 30, 28 of a total of 36 Oregon counties will be certified brucellosis-free, according to Steward. By June 30, 1959, the whole state will be so certified, he added. This program has two main goals: (1) control and eradication of brucellosis, and (2) free movement of female cattle between counties and states, the secretary of agriculture said.

Ted Hyde, of the Oregon State Cattleman's association, who is plugging for the beef commission, told us there is bound to be a switch in eastern Oregon in favor of the proposed commission. So far from that area there has been loud-voiced opposition against the idea. Hyde said in any movement there is always a well-organized group of "aginners." He said he believes strongly the great majority of the beefland people are for the commission.

Hyde said the need for such a commission to promote the sale of beef is underlined by the report that beef now is starting to back up in the cold storage lockers. The present period of high beef prices could make the beefmen overly complacent, he added.

Incidentally, Hyde created quite a few chuckles with the sign on his briefcase. The large red and white sticker reads, "Lamb's my meat." Ted explained that this was the only cattlemen to form a commission to put out their stickers, he said.

Speaking of eating, we have long maintained the farmer and his family eat with better sense than city people. One thing they do, mainly because of the nature of their work, is to get up early enough to eat a good breakfast. The wife, Little Diminuty, argues only in the "olden days" did the wife get up to fix her husband a good breakfast. Now, with both the wife and husband working, the husband gets up and does the cooking, she says.

She may be right. But out of curiosity, we would like to know how you feel. Send us a post-card or letter addressed to this column and tell us whether or not a good breakfast prepared by the wife is or is not necessary to the health and welfare of the family.

If you go to the county courthouse looking for the ASC office you will find it moved to the third floor of the annex. A room has been especially arranged there. It used to be on the first floor of the main courthouse building not far from the county extension office. Don't forget Feb. 20 is the last day to sign up for the acreage reserve program. April 15 is the deadline for the conservation reserve sign-up.

Those putting their cattle on forest range lands in this area just missed getting an ear-tagging program, according to an announcement by state forest service officials here. Harold Brown told cattlemen at the Central Point meeting it was decided to give the cattlemen another year before every animal on government range is tagged to prevent putting too many animals on that grass. This problem is not new and has been going on for 50 years or more, we understand. Siskiyou summit, particularly, shows signs of over-grazing.

To ease this problem, some rehabilitation work has been started. A small project is now underway in the Silver Fork basin, just down from Jackson gap.

The idea now is to rotate cattle from one piece of range to the next. The rancher gets more beef from the grass and the forest range lands are protected. The only excellent section of pasture now in this once lush grassland is a 20 acre meadow consisting of two grass patches and is called Phantom meadows. The turfed hair grass on it proves it is in excellent shape.

The Jackson County Stockmen's association starts the year with a new slate of officers elected during the Tuesday meeting—Burton Bradshaw, president; Armon Richter, vice president, Don Nichols, treasurer, and County Extension Agent W. B. Tucker, secretary.

A number of people have been plugging for a cooperative here along the lines of the Eugene Fruit Growers association. A survey was made two years ago to see if there was enough acreage in fruits and vegetables to support such an industry. It was learned there was not. Now it is hoped with the coming of the Talent project and other similar projects for reclaiming land more acreage will be planted to fruits and vegetables to make such a co-op economically possible.

Copies Mailed To More Than 2500 Meat Dealers

Salem — Copies of Oregon's standard of identity for hamburger have been mailed to more than 2500 licensed retail meat dealers throughout the state. The state department of agriculture will begin analyzing hamburger samples for composition immediately.

The administrative order, signed by O. K. Beals, chief of the department's division of foods and dairies, weights and measures, gives labeling requirements for ground beef or hamburger, plus the permitted composition of the product.

Retail meat dealers are ordering new labels to fill the requirements described in the order. He said, "The regulations is now in effect and we are expecting compliance."

In answer to questions received by the department concerning the order, Beals states:

1. Hamburger purchased by restaurants and other eating places must meet the composition standard and the labeling requirements.

2. Any ground beef product must contain only the standard ingredients and should be labeled as either "hamburger" or "ground beef." This includes ground beef molded into a particular shape and given a trade name.

3. Labels on hamburger packages should not be torn off at the point of sale; they are for the consumer's information. (This practice is followed in some stores for accounting purposes.)

4. Only when the product is made entirely from a certain part of the beef carcass it is permissible to have additional information on the label. For example, "ground beef made from ground round" is legal; "lean ground beef" is not.

The average American eats more than 160 pounds of meat a year.

Farm and Garden



A LOT OF BULL—John Bohnert, standing at the halter, and Don Bradshaw post for this picture at the recent Red Bluff bull sale. This excellent animal was sold to Bob Fisher of Medford. The two men of Seven Oaks ranch in this area were among a large number of Jackson county people who attended the famous sale. This sale was used to bring prime bulls into the area.

Spray Men Get New Certificates Following Course

Salem — Certificates were awarded to 45 of Oregon's licensed agricultural chemical applicators who attended the seventh annual short course Jan. 27-31 at Corvallis. Conference sponsors were the college and the state department of agriculture.

It is more desirable for farmers, home owners and foresters to follow a regular program for controlling rodents rather than "spot" controls which are usually applied when it is too late, declared L. W. Kuhn. He is biologist with the fish and game department, state experiment station at OSC.

Kuhn stressed that proper timing and coverage of the complete area are two of the most important things to remember in rodent control.

Dr. Ralph R. Sullivan, state board of health, told the group Oregon has a good record in use of agricultural pesticides, as far as preventable incidents are concerned.

Periodic Blood Tests
He warned, "Don't drop your guard when using agricultural pesticides." Applicators who use organic phosphorus compounds consistently in spraying should have periodic blood tests, he warned. The public health official also cautioned sprayers to be extremely careful when using chemicals that fall into the chlorinated hydrocarbon group.

George Moose of Salem, ragweed control supervisor for the state department of agriculture, reported nearly 4700 acres of ragweed-infested areas were treated during 1957. He added that the plan for 1958 includes educational work with farm and youth groups during the winter. In the spring suspected areas of infestation will be surveyed, Moose added, and actual control work will probably start in late June or early July.

At the Jan. 29 meeting of Ground Sprayers, Inc., Ted Glass of Eugene was appointed president and Ray Collier of Portland, vice president. Gordon Jones of Portland was elected to the board of directors.

Oregon Farm Prices Show January Gain
Corvallis—Oregon farmers started the new year with prices at the highest level since last April, according to Mrs. Elvera Horrell, extension agricultural economist at Oregon State college.

Prices received by farmers in the state rose nearly 2 percent from mid-December to mid-January. Mrs. Horrell found in studying reports from the U.S. department of agriculture. As a result, prices now stand at the same level as a year ago.

Particular agricultural research problems.

Over 110,000 Inspections Made By Foods Division

Salem—More than 110,000 inspections and tests for the protection of consumers, sellers and buyers were made last year by the division of foods and dairies, weights and measures, state department of agriculture. This is shown in the annual statistical summary of O. K. Beals, division chief.

Nearly 500 more inspections, or a total of 4,132, were made of dairy farms during 1957 than in 1956. Slight decreases show up in inspections of dairy distributors and manufacturing plants due to fewer operators in this field.

Nearly 2,000 samples of ice cream and other frozen desserts were tested, compared with 1,758 tests made in 1956. In spite of a decrease of 26 in total number of fluid milk dairies, the 10,409 fluid milk samples analyzed in the department laboratories are an increase over a year ago.

Pipeline Milk
The impact of the farm milk tank and pipeline milk on dairies shows up in few sediment tests recorded in the last few years. In 1957, for example, the 21,858 sedi-

ment tests of all milk and cream were less than 30 percent of the checks necessary on this phase of milk quality control five years ago.

In the weights and measures area, 25,620 packages of foodstuffs were checked for accurate weight — 4,000 more than in 1956.

Oregon's gas pump numbers continue to increase, as is reflected by the fact 1,000 more pumps were checked in 1957 than the year earlier. Weights and measures inspectors tested 10,164 pumps for accuracy. Nearly 3,200 fuel oil meters were checked—also a substantial increase over the previous year's figure.

Among food establishments at which sanitation inspections were made were: food markets, 144; meat markets, 476; locker plants, 908; bakeries, 648; processing plants, 16; carbonated beverage plants, 145.

The report shows a substantial increase in the number of economic poisons sampled for laboratory analyses but a slight drop in inspections and sampling of feeds and fertilizers.

Research Laboratories Set Up By Department

Washington — The Agriculture Department has set up two special pioneering research laboratories, has obtained charters for three more, and plans to establish additional units of basic research.

These special groups, organized around outstanding scientists, are being established in various divisions of the Agricultural Research Service (ARS). Their basic function is "to explore the scientific unknown beyond the present limits of knowledge."

The two special groups in full operation are the pioneering laboratory for mineral nutrition, in the soil and water conservation research division, and the pioneering laboratory for plant physiology, in the crops research divisions. Both are located at Beltsville, Md., the department's research center.

Charters have been approved for three additional laboratories, also at Beltsville. They are for blood antigen research, in the animal husbandry research division, and for insect pathology and physiology, in the entomology research division. Pioneering research groups in a number of other ARS divisions still are in the planning stage.

Two Experts Named
Dr. Sterling B. Hendricks and Dr. Harry A. Borthwick already have been selected to conduct that research project now underway.

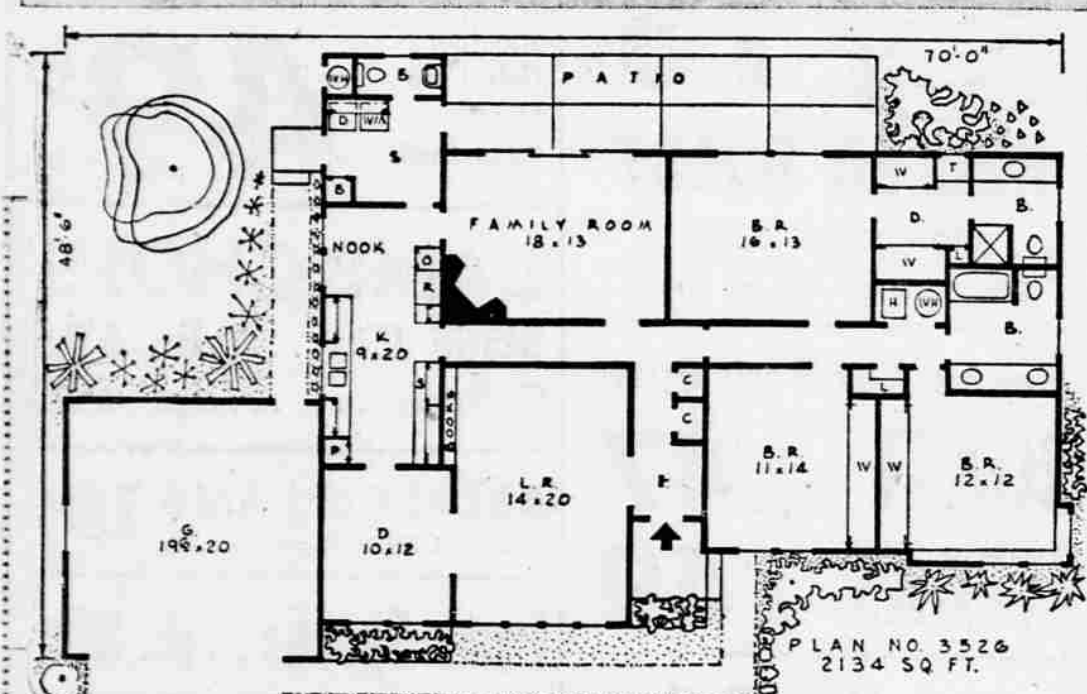
Hendricks is chief chemist of the laboratory for mineral nutrition. He and his associates will work toward developing a better understanding of processes related to the mineral nutrition of plants. At the outset, their research will involve studies of how plants accumulate inorganic ions and how these ions function inside plants.

Borthwick is assigned to the laboratory for plant physiology. He is the co-discoverer with Hendricks of the fact that light-sensitive pigments control flowering, seed germination, and other behavior of many plants that exhibit the phenomenon known as photoperiodism. He and his associates will seek clearer understanding of how plants are influenced by such factors in their environment as light, temperature, and chemical substances.

Dr. Byron T. Shaw, ARS administrator, said the pioneering research units are to be established only in subject-matter fields for which research funds have been authorized and in which it can be expected that new basic findings will substantially advance agricultural science.

Shaw emphasized that the new groups will do only a part of the basic research undertaken by ARS. The regular research divisions will continue to plan and to carry out fundamental investigations aimed at supplying new scientific facts and principles recognized as needed to solve

This Week's Town, Country House



By HIAWATHA ESTES

The rugged shake roof and stone veneer of this 2134 square foot home makes it appear to have "grown" from its natural setting. Hewn beams protrude from the gables and a unique design is incorporated in the garage door. The wide expanses of glass and functional interior plan mark this home as completely modern.

Destined for popularity is the family room, with a big fireplace in one corner. On the opposite wall triple glass doors slide open for easy transition between indoors and outdoors. A door also opens to the patio from the service area, making it easy to serve meals outdoors when the weather is warm.

The outer service entrance is only a step from the rear door of the garage, and the half-bath is handy to the work area, patio and play yard.

An expanse of windows lights the big front living room. Book shelves are built-in and double doors open to unite the living room and separate dining room for parties and social gatherings.

Although the fireplace is shown in the family room, it could be relocated in the living room during construction—or, if you wished, fireplaces could be built in both of these rooms.

A separate bath and dressing room with double wardrobes are part of the master bedroom suite. Twelve-foot wardrobes are welcome features of both the other bedrooms.

Two water heaters supply the bathrooms and kitchen with plenty of instant hot water. Closets along the hall, a pantry, broom closet and storage rack in the double garage provide ample storage room.

A forced air heater keeps this home at the desired temperature the year around.

The kitchen opens onto the dining room, family room, service area and hall. Yet, there is more than ample cabinet space, built-ins and an extra large breakfast nook has been provided.

Complete working drawings of the above plan can be obtained at a cost of \$7.50 for the first set and \$5 for each additional set, when ordered at the same time. This plan will be available for a period of four months from this date. Please order at once. Plans for TOWN and COUNTRY HOMES may be purchased for \$1. Send all orders for either plans or books to: Hiawatha Estes, P. O. Box 404-T, Northridge, Calif.