

ifference in Safeway HAMS!

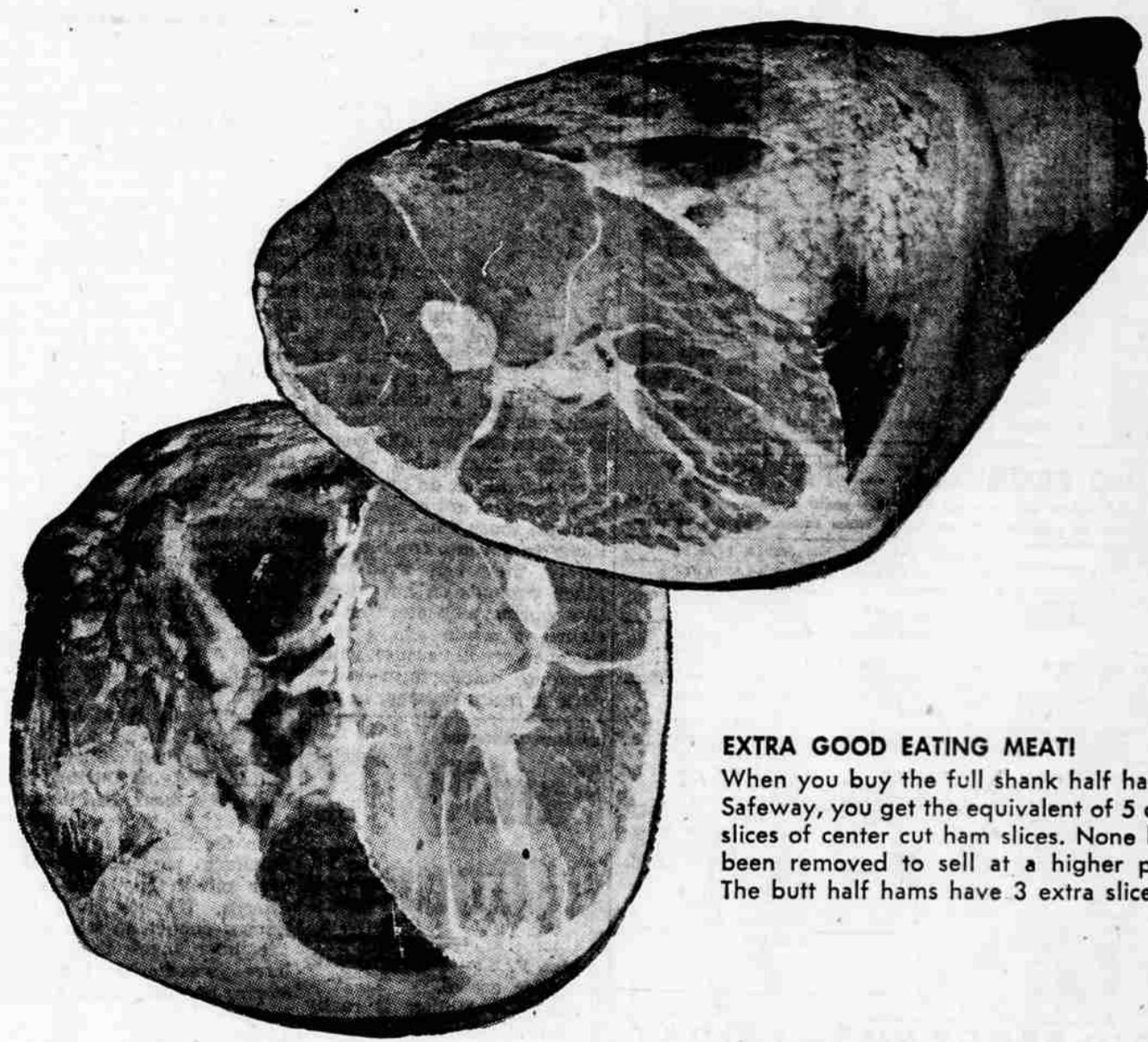
All the good eating meat that belongs on ham is left on at Safeway . . . No center slices removed from full half hams . . . Another way we help to LOWER YOUR TOTAL FOOD BILL!

Smoked Ham

Agar brand finest Eastern hams, 12 to 16 pound average. Every one guaranteed to please you 100 per cent. Short shank, defatted and tenderized . . . YOUR best meat value this week at Safeway.

Whole Ham or Shank Half

lb. **55¢**



EXTRA GOOD EATING MEAT!
When you buy the full shank half ham at Safeway, you get the equivalent of 5 extra slices of center cut ham slices. None have been removed to sell at a higher price. The butt half hams have 3 extra slices.

BUTT HALF HAM

Deep smoked full half with more good meat

lb. **59¢**

SHANK END PIECE

Plenty of good slicing ham on this fine cut

lb. **45¢**

BUTT END PIECE

Center slices removed, 4 to 6 pound size

lb. **53¢**

HAM SLICES

Center cut smoked slices for broiling or frying—delicious!

lb. **89¢**

SLICED BACON

Swift's premium with that sweet smoked flavor

lb. **69¢**

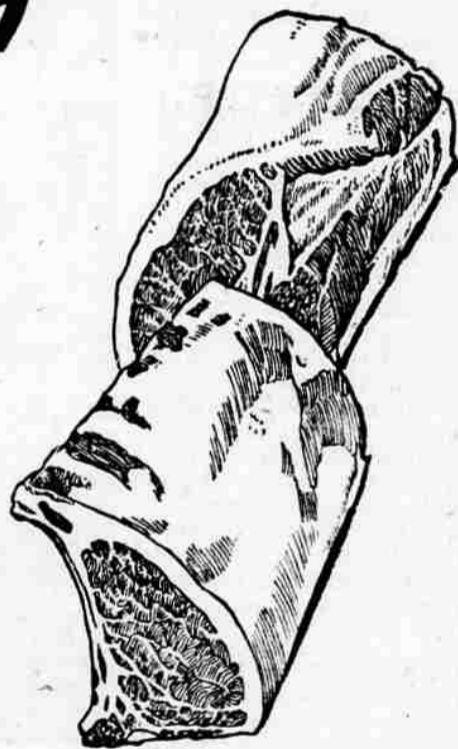
Another fine meat value this weekend at Safeway

Pork Loins

lb. **55¢**

These are the finest pork loins we've seen in many a day—medium size, trimmed of excess bone and fat to give you more good eating meat, and just look at this special price!

Whole or Half Loins



RIB ROAST

Pork Loin end 3 to 3½ lb. size

lb. **49¢**

LOIN ROAST

Loin end cut 3 to 3½ lb. size

lb. **53¢**

PORK CHOPS

Center cuts rib or loin

lb. **79¢**

PORK ROAST

Fresh picnic style,, 6 to 8 lbs.

lb. **39¢**

More Safeway Meat Values!

- Pork Roast** Blade cut round bone lb. **49¢**
- Pork Steak** Shoulder pieces lb. **49¢**
- Fresh Fryers** Pan-ready cut up lb. **55¢**
- Whole Fryers** Fresh drawn 2 to 3-lb. lb. **49¢**
- Rib Roast** "U.S. CHOICE" beef standing, aged lb. **89¢**
- Chuck Roast** "U.S. CHOICE" beef blade cut lb. **55¢**
- Veal Steak** or beef. Manor House, breaded 8-oz. **53¢**
- Pork Steak** Manor House, breaded 8-oz. pkg. **53¢**

Busy Baker Carload Sale . . .

Cookies

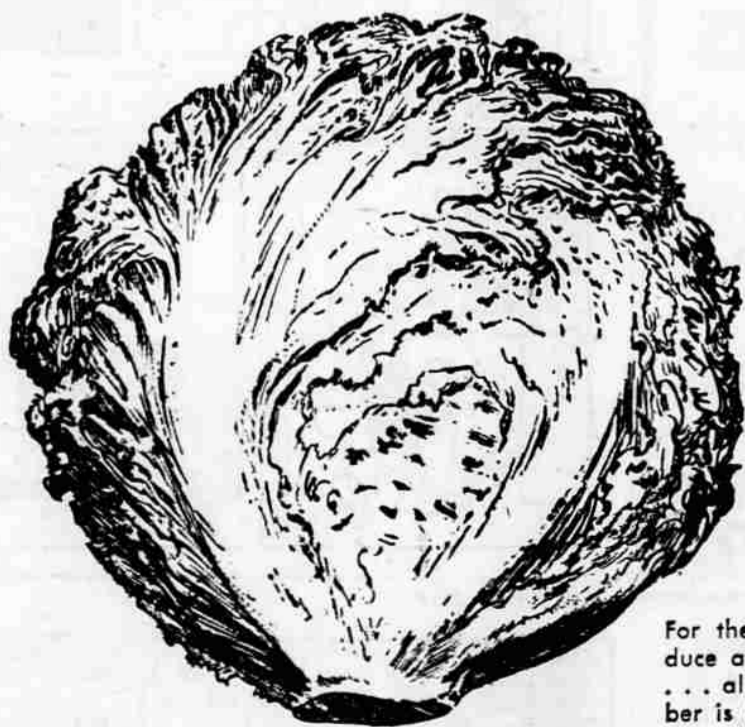
- Chocolate Eclairs
- Fig Bars
- Waffle Cremes
- Butterscotch Nut Puff
- Vanilla and Sugar Wafers
- Mixed Cookies
- Animal Crackers

Your Choice

Pkg. **25¢**

- Chopped Beef** Wilson 12-oz. tin **39¢**
- Bradley Pies** Frozen 8" apple **39¢**
- Minced Clams** Sea Trader 7½-oz. tin **29¢**
- Raisins** Vine Crest, seedless 2 lbs. **49¢**
- Dried Apples** Glenview 8-oz. pkg. **33¢**
- Paradise Wines** Half gallon **\$1.49**
- Gallo Wines** Fifth **69¢**
- Floor Wax** Liquid Vinyl 10c off, quart **88¢**
- Floor Wax** Liquid Vinyl 20c off, half gallon **\$1.49**
- Wisk** Laundry detergent 10c off, quart **73¢**
- Wisk** Laundry detergent 23c off, half gallon **\$1.32**

For the finest in produce . . . all you need to remember is Safeway!



For the finest, freshest produce at everyday low prices . . . all you need to remember is Safeway.

Crisp Lettuce

2 heads for **29¢**

Here is the kind of lettuce, you'll agree, that delights salad lovers. It's the crispest, most crackling lettuce we've had all season. Come and see for yourself . . . you'll find you can't resist this perfect lettuce, nor this attractive low, low price.

GRAPEFRUIT

Texas ruby reds, sweet and juicy with thin slices

5-lb. cello **59¢**

AVOCADOS

Frerte variety, med. size with a rich nutty flavor.

3 for **29¢**

POTATOES

U.S. No. 2 grade Oregon Russets—a fine value now at Safeway.

50-lb. bag **98¢**

ROME APPLES

Extra fancy, large size Lb. 10c.

10 lbs. **99¢**

DELICIOUS APPLES

Extra fancy

23-lb. box **\$1.98**

Prices effective through Saturday, February 1, at Safeway in Medford



SAFEWAY