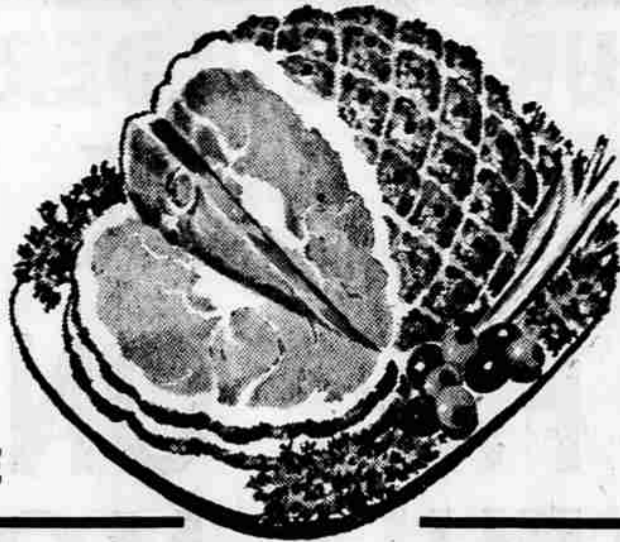


IF YOU'RE NOT SHOPPING AT THE GROCETERIA YOU'RE PAYING TOO MUCH

Medford Meat Co. TASTY BRAND
TENDERIZED - SMALL SIZE

HAM 53¢ lb.



"Have Knife, Will Cut" SHANK HALF or WHOLE

ROBERTSON FRESH MADE

TAMALES 23¢ FOR **245¢**

SWIFT PREMIUM BRAND SEALED CELLO WRAPPED

DRIED BEEF 33¢ lb. Enough to Serve 4

U.S. GRADED CHOICE STEER

PRIME RIB ROAST 79¢ lb. Aged to Perfection Cut Short Chime Removed

FRESH CAUGHT—DEEP WATER PACIFIC

RED SNAPPER FILLET 27¢ lb.

SWIFT PREMIUM BRAND—SEALED CELLO WRAPPED

SKINLESS FRANKS 49¢ lb.



VALLEY PACKING CO. CASCADE MEATS

WHOLE HOG PURE PORK

Sausage

Taste Before You Buy DEMONSTRATION FRI. & SAT.

69¢ lb.

YOUNG TENDER—MEATY CENTER CUT SHOULDER

PORK ROAST 39¢ lb.

Swift Premium Brand — SHORT SHANK

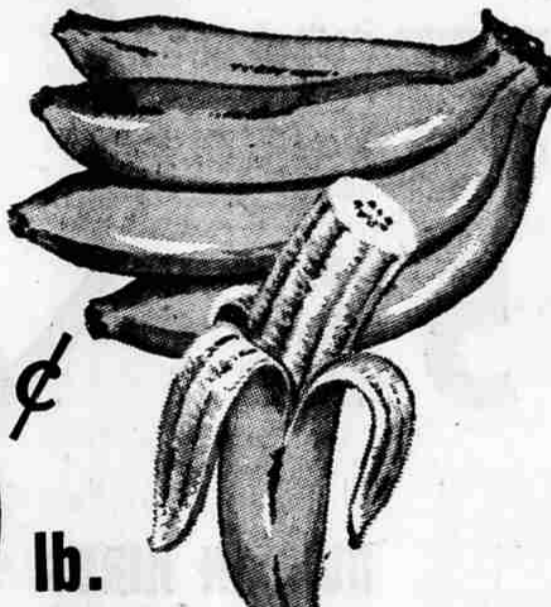
FULLY COOKED HAM 59¢ lb. Shank Half or Whole

Meat prices in this ad good through Saturday, Jan. 25, 1958

LIVE BETTER for LESS with
Groceteria Fresh Produce

GOLDEN BUTTER SMOOTH

BANANAS 13¢ lb.



SAVORY TROPICAL FLAVOR

Pre-packaged by nature for lunch box or home

WHY NOT HAVE A BANANA and APPLE SALAD

YOUR CHOICE —

EXTRA FANCY YAKIMA RED DELICIOUS

FANCY YAKIMA GOLDEN DELICIOUS

EXTRA FANCY YAKIMA WINE-SAPS

TRAY PACK YAKIMA ROME BEAUTIES

2 lbs. FOR 25¢

For salads, baking, or just good munching.

Put a Touch of Spring On Your Table with These Sunshine Specials!

FANCY CHERRY **RHUBARB 29¢** lbs

TENDER TASTY **MUSTARD GREENS 15¢** 2 Large Bunches

NEW RED **POTATOES 29¢** 3 lbs.

NEW GARDEN **PEAS 45¢** 2 lbs.

FANCY LOCAL **D'ANJOU PEARS 15¢** lb.

TOP QUALITY **AVOCADOS, Ripe, Ready to Serve**



SITTING IN WHEEL CHAIR, Mrs. Dewey Huston, 35, her husband and two sons, prepares to enter luncheon meeting in New York where she was named National Polio Mother. They are from Bellingham, Wash. (International)

Tree Farm Program Get Three Million Acres During 1957

Washington—The industry-sponsored Tree Farm program of growing timber as a crop on taxpaying lands gained 3,399,700 acres in 1957, reaching a total of 44,947,917 acres in 45 states.

The acreage increase, which reflects steady growth of the 17-year-old private enterprise plan to assure the nation an everlasting wood supply, was announced by C. A. Gillett, managing director of American Forest Products Industries, which sponsors the American Tree Farm System.

The year-end figures showed 11,163 certified tree farmers, including individual landowners and forest industries themselves.

Oregon Total Florida, first state to pass the 4 million-acre mark in certified Tree Farms, maintained leadership with 4,519,798 acres. Other leaders include Georgia, 3,909,193 acres; Oregon, 3,861,832 acres; Alabama, 3,832,694 acres; Washington, 3,775,916 acres; Texas, 3,630,695 acres and Arkansas, 3,422,667 acres.

Mississippi continued to lead in the number of Tree Farms enrolled with 1,177. Texas dedicated its 1,000th Tree Farm in November.

Oklahoma became the 45th state to activate the Tree Farm movement. With formal launching next spring, Delaware will become the 46th Tree Farm state.

"Industry's Tree Farm movement is a fountain of prosperity which flows into every avenue of the nation's economy," said J. C. McClellan, AFPI's chief forester and assistant managing director. "Not only does tree farming provide the wood Americans need for more than 5,000 every-day items, but it means jobs for thousands of workers; better food and cover for wildlife; greater opportunities for forest recreation; also watershed protection and soil conservation."

Holt, of Creswell, Ore., will be awarded the medal by the Ministry of Health and Social Affairs in recognition of his "humanitarian devotion" to the welfare of Korean mothers.

The decoration will be awarded as Holt is preparing to take a new group of some 85 orphans to their new homes in America. It will be presented during a surprise ceremony.

It is being awarded as an indirect result of a United Press story on Holt's activities in finding homes for Korean orphans in the U. S.

The story, written by U.P. staff correspondent Bill Force said that Holt had given most of his modest fortune and endangered his health to carry on the program.

Holt suffered a heart attack during a trip back to the United States last year with a plane load of Korean children.

The newest group, who range in age from three weeks to 14, will leave Seoul Wednesday by chartered Korean National Airlines plane for San Francisco. Most of them will go to homes in California and Oregon.

OSC Official Sees Good Timber Market

Corvallis — An optimistic long-range market outlook for Douglas fir timber has been reported by Gary Sander, Oregon State college forest products marketing specialist.

Sander said demand for timber may increase by 25 to 40 per cent by 1975, according to a recent estimate by the U. S. department of agriculture. The estimate may prove to be too conservative, however, if population increases are greater than now anticipated, the department's forest service noted.

Using the more conservative population estimates, Sander said demand for timber is expected to outrun supply within a few decades, particularly for preferred softwood species such as Douglas fir and for high quality timber.

Salem — Public Utility Commissioner Howard Morgan said that Pacific Power and Light Company plans to extend its competitive rate areas into rural districts south, east and west of The Dalles have been suspended for a period of not more than six months.

Businessmen Asked To Cooperate in Curbing Bad Checks

A plea for cooperation of businessmen in doing what they can to curb individuals who pass fraudulent checks was made yesterday by William H. Williams, federal bureau of investigation agent.

Williams, special agent in charge of the Portland office of the FBI, addressed Medford Kiwanis club, concerning law enforcement against writers of spurious checks.

He brought out that law enforcement authorities would not have the record they have today if it had not been for cooperation of merchants. At the same time he said there are businessmen at fault because of unwillingness to sign complaints or testify. The FBI man added that there are too many who want to use law enforcement as a collection agency.

Handled by Check Mentioning the greatest percentage of financial transactions today are handled by check, Williams said that "no good" checks present a problem not only because of the investigation required but because persons who have passed them are affected just like narcotics addicts.

The FBI agent spoke of the amateurs who operate locally and of the advanced or professional operators who travel from state to state and make their living by passing checks. Williams pointed out that many "professionals" have had experiences in trades and use these in their operations. He remarked that country clubs, where fraudulent check passers may obtain cards in locker rooms, serve to afford credentials for false identity.

The speaker told of the fraudulent check file and laboratory of the FBI in Washington, D.C., and means of tracing writers of bad checks by handwriting, type of paper and type of violation. He said also that markings made by individual check writing devices differ like fingerprints. Williams stated that some spurious check passers have such salesmanship ability that they would make good livings if they chose to follow legitimate occupations.

Law enforcement against crime costs more than \$2 billion per year Williams reported to Kiwanians. That amounts to \$1.29 per person. He said that for every dollar which goes to a church, 12 go to combat crime. One out of 16 homes are affected by crime annually Williams said, adding that 60 per cent of the persons arrested and fingerprinted last year had previous crime records.

Williams said the Medford police department is recognized as one of the best in the state and added that law enforcement officers in other communities look to Medford Chief Charles Champin for advice and counsel.

Several publications available on request describe previous work on particle products at the state laboratory, Burrows said.

Particle boards offer an advantageous outlet for mill residues in Oregon. Eight plants now are producing, and another will be in production soon.

Portland — Federal District Judge Gus J. Solomon Wednesday ordered a judgment of acquittal for Robert F. Middleton, Redding, Calif., and William S. Ingram, Oakland, Calif., two lumber brokers named as defendants in the Bailey Lumber Company fraud case.

Judge Solomon said the two should be released as defendants on the basis of insufficient evidence to convict on mail fraud charges. The trial started here Tuesday for Richard G. Bailey, Mrs. Laurel Macy, a bookkeeper for the now defunct Bailey firm, Norman Eggiman, an accountant, and the two brokers who were dismissed as defendants Wednesday.

The firm is accused of using false invoices and bills of lading to bilk banks out of some \$260,000.

Acquittal Ordered In Lumber Fraud

Portland — Federal District Judge Gus J. Solomon Wednesday ordered a judgment of acquittal for Robert F. Middleton, Redding, Calif., and William S. Ingram, Oakland, Calif., two lumber brokers named as defendants in the Bailey Lumber Company fraud case.

Judge Solomon said the two should be released as defendants on the basis of insufficient evidence to convict on mail fraud charges. The trial started here Tuesday for Richard G. Bailey, Mrs. Laurel Macy, a bookkeeper for the now defunct Bailey firm, Norman Eggiman, an accountant, and the two brokers who were dismissed as defendants Wednesday.

The firm is accused of using false invoices and bills of lading to bilk banks out of some \$260,000.

George Wesley Thomas, illegal possession of intoxicating beverages, \$20.
Sydney Oscar Thoreson, illegal possession of intoxicating beverages, \$20.
Harold Clyde Beddingfield, over-load, \$12.50.
Circuit Court of Betty Jane Worden vs. Joseph Worden, divorce complaint.

Friskies KIBBLED
A Complete Dog Food

the only Kibbled with **6 FLAVORS, 6 COLORS!**

meat, liver, milk, fish, vegetable, chicken

• only Kibbled that's slow-baked for quicker mixing with liquids.

• only Kibbled that's kennel-tested for complete nutrition.

Buy Friskies Kibbled today—it's another complete dog food from Armaton

HERTZ
RENT-A-CAR SYSTEM LICENSEE

Daily's U-Drive
Medford Airport