

CRASHING INTO rear end of passenger-mail express, Chicago & Northwestern suburban train kills one person, injures 70, near Cary, Ill. (International Soundphoto)

Stomach Worms Costly To Livestock; Extension Agent Explains Symptoms

Money is the chief diet of livestock parasites. They may be in your bank roll now, according to Earl Jossy, Jackson county extension agent.

Dead animals, reduced gains and ruined hides account for a rather large slice of livestock income every year.

Stomach worms are the most common of the internal parasites, and the most costly. All cattle and sheep carry some worms. Young animals and animals weakened through sickness or malnutrition have less resistance and the number of worms increase to a degree which causes the animal to lose weight, and if not checked, can cause death. Stomach worms come in considerable variety of sizes and shapes. Some are large enough to be seen, while others can only be seen under a microscope. These parasites live in the fourth stomach of sheep and cattle, attached to the walls of the stomach. They suck blood, produce poisons, impair digestion, and lay eggs. The eggs pass out with the feces and hatch into larvae which crawl up on blades of grass where they are eaten by grazing animals and the cycle is started over again.

Symptoms of stomach worms are a persistent diarrhea showing gas bubbles, manure matted on the tail, loss of weight even though eating well, and sometimes a swelling under the jaw as though the animal were holding a bottle in its mouth.

Prevention is the best medicine for worms. First, separate or sell all seriously infected animals from the herd. Rotate pastures on a 24-day interval, or longer if practical. Feed a salt and Phenothiazine (nine parts salt to 1 part PTZ.) Treatment for worms is rather severe and weak animals sometime die as a result.

If animals are showing symptoms of worms, take a sample of feces to a veterinarian and have it analyzed for worms. He will recommend treatment.

Animals in fairly good health can be drenched with Phenothiazine according to directions on the bottle. This should usually be repeated in 21 days. Phenothiazine given to young animals can cause eye trouble, particularly on bright sunny days. It is therefore wise to dose on cloudy days or late in the afternoon. Horses, and calves under three months of age, should not be treated with Phenothiazine.

Agriculture Department Lists 28 Cattle Stolen

Salem — The December estray bulletin of the state department of agriculture lists 28 head of cattle lost, strayed or stolen from Oregon owners.

Largest loss was incurred by a Douglas county rancher, who reported nine white face cows and 13 white face calves missing from the Black Rock area out of the Umpqua National Forest.

Elaine Soule Emotionally Dull, Psychiatrist Says

Redwood City, Calif. — A psychiatrist believes Elaine Soule is emotionally dull, cold and indifferent—in short, that she has all the symptoms of schizophrenia.

This was the picture Dr. Walter A. Rapaport painted of the 20-year-old defendant Wednesday while testifying as a defense witness in Miss Soule's murder trial.

And it was possible that Superior Judge Frank Blum might strike his testimony from the record when court reconvened this morning. The prosecution claimed it was beyond the scope of the present trial.

Miss Soule, a honey-haired typist from Freeport, N.Y., is accused of killing her pretty roommate, Catherine Marie Elvins, 19, of Seattle, last July.

The prosecution says she did it for money — a \$160 check that Miss Elvins' parents had sent for her schooling. But Miss Soule said on Tuesday she "just didn't know" what caused her to kill.

Other Testimony

Rapaport, superintendent and medical director of Agnew State hospital, took the stand after an earlier defense witness, Dr. William W. Anderson, a neurologist, said Miss Soule suffers from "psychomotor epilepsy." Anderson indicated that girl could quite possibly have beaten Miss Elvins with a flatiron and stabbed her with an ice pick without remembering having done so.

Rapaport said he had given Miss Soule four examinations, mental, physical and neurological in San Mateo county jail, where she has been held since the killing on July 24.

SHIP EXPERT DIES

West Haven, Conn. — Joseph Wheeler Appleton, 57, an expert on historic ships and ships models, died Tuesday at veterans hospital. Appleton was a former curator of the marine collection of the Museum of the City of New York.

JESSE REPORTS THEFT

Ridgewood, N. J. — The custodian of the Methodist Church here Wednesday reported the theft of \$75 from the church safe. The custodian is Jesse James.

Deferred Sentence For Puyallup Girl

Tacoma — Janet Passmore, 16, Puyallup, who attempted to spring her boy friend from the Pierce county jail at gunpoint Oct. 15, was given a three-year deferred sentence Wednesday on second-degree assault charges.

Judge Bartlett Runnel handed down the sentence, providing she serve more than a year at the House of the Good Shepherd in Seattle.

Runnel also hit out at the state's lack of an intermediate, correctional institution for teen-aged girls. He said he was reluctant to send Miss Passmore to the state penitentiary and into the company of hardened women criminals.

BOGUS BIBLE CHECK

Baltimore, Md. — Joseph Gilbert was under a three-year sentence to the Maryland House of Correction today for writing bogus checks, one of them to purchase a bible.

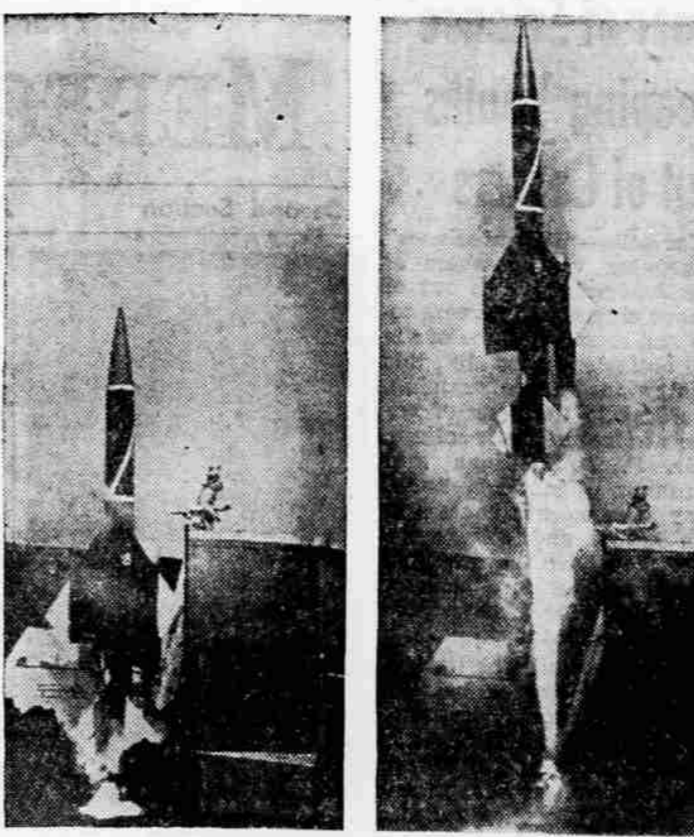
condition influenced deteriorously her capabilities to premeditate in a rational manner."

Defense Attorney G. Brooks Ice asked on what Rapaport based his opinions.

"I base them on the fact that Miss Soule is emotionally dull, cold, indifferent and has an inability to sustain a line of replies when she receives suggestions contrary to previous statements," Rapaport said.

District Attorney Keith Sorenson asked: "Isn't it true that these are the symptoms of Schizophrenia?"

Rapaport nodded.



MORE MISSILES ORDERED—These two test firing photos of the new Bomarc missile were released in concurrence with announcement that the Air Force has awarded the Boeing Airplane Co. in Seattle an order for approximately 100 more of the supersonic, defensive missiles. The long-range missile can be equipped with either a conventional or nuclear warhead.

Bucket of Bucks Dance At Camp White Tonight

Square dancers will dance so that others may walk when the annual Bucket of Bucks dance is held at the Square Corral at Camp White tonight. Dancing will start at 8:30 p.m. and admission will be by donation to the "Bucket of Bucks."

The dance is sponsored by the Rogue Valley Square

DIES IN PIG RESCUE

Manila — Mrs. Feliciano Moulik, 50, was killed today when she ran in front of an onrushing train to save her newly purchased pig. The pig was saved.

Dance Callers Association and callers will be Doug Fosbury, Kenneth Hood, Ray Hagemann and Doug Decker. Other callers will participate, it was stated.

Alaska Airlines Pilot Dies in Crash

Juneau, Alaska — Fred Sheldon, 37, Alaska Coastal Airlines pilot, was killed Wednesday when his single-engine seaplane crashed in a creek bed in the mountains of Chicago Island, about 50 miles west of here.

Two men, identified only as Mr. Johnson of Tenakee and Mr. Short of Baranof, were injured in the crash.

EX-CORRESPONDENT DIES

Bristol, England — Percy S. Bullen, 90, correspondent in the United States from 1904 to 1934, died here Monday. Bullen stopped in New York on his way to cover the Russo-Japanese war and stayed. He was a former president of the Association of Foreign Correspondents in the United States and recipient of the University of Missouri's first medal for foreign correspondents.

Why settle for less?

enjoy the good taste of COKE

Drink Coca-Cola

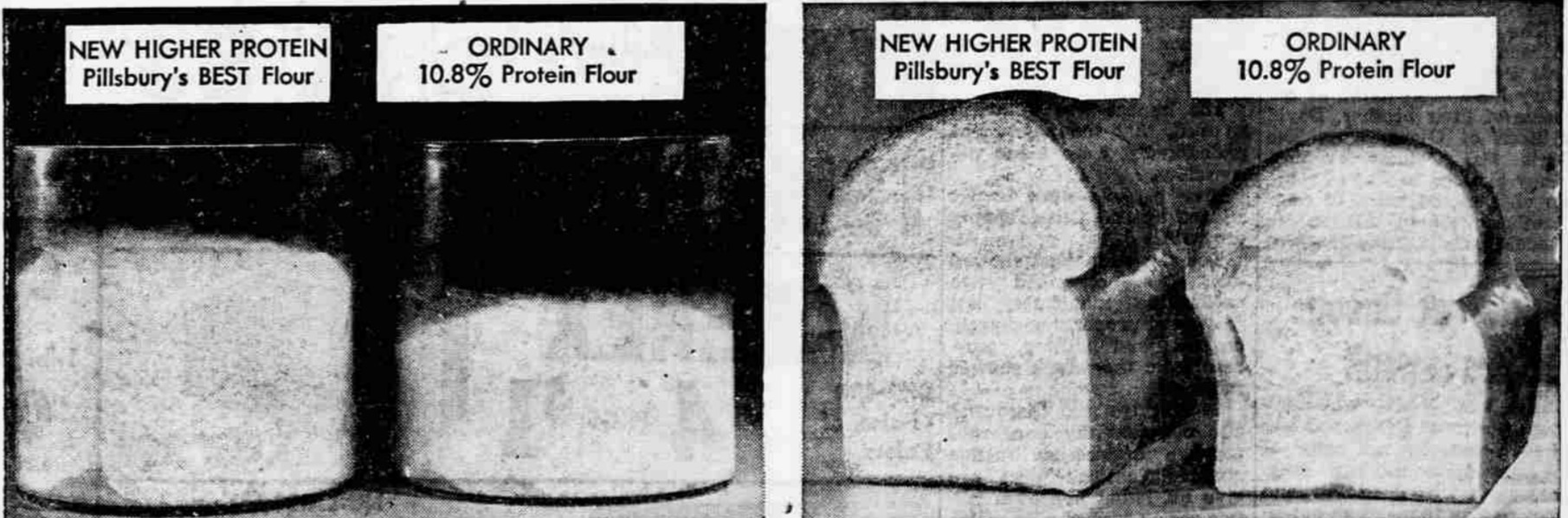
SIGN OF GOOD TASTE

Bottled under authority of The Coca-Cola Company by COCA-COLA BOTTLING COMPANY OF MEDFORD

Greatest bread-baking improvement in years... from Pillsbury's BEST Flour

New...Thirstier Flour makes livelier, faster-rising dough for better bread!

See the difference the higher-protein wheat in new Pillsbury's BEST Flour can make in your baking!



You can see it as the dough rises: This is an unretouched laboratory picture comparing dough made with the new Pillsbury's BEST Flour and dependable Red Star Yeast vs. dough made with ordinary 10.8% protein flour. Quite a difference! Prove this in your own kitchen. We guarantee you'll see a difference.

You can see it in the bread... see how the new flour makes a loaf that actually bakes up about one inch higher. Bread and rolls made with this new Pillsbury's BEST Flour come out of the oven even-textured on the inside and golden-crust on the outside. It makes your favorite bread even better. Get a sack this week.

Try new Pillsbury's BEST with your own favorite bread recipe

OR... use Ann Pillsbury's recipe on the back of the sack.

OR... for something a little different, try the Grand National Prize-winning recipe, County Fair Egg Bread by Mrs. Phillip Carlson, St. Helens, Oregon.

Bake with this guarantee:

Compare new Pillsbury's BEST with any other flour for baking bread. If it doesn't give you better, higher bread and rolls, mail the empty bag with price stamp and letter of explanation to Pillsbury Mills, Inc., Box 416, Minneapolis, Minnesota. We will mail you double what you paid for the flour.

COUNTY FAIR EGG BREAD adapted by Ann Pillsbury

BAKE at 375°: 15 to 21 minutes for rolls, 35 to 40 minutes for loaves.

Soften..... 2 cakes compressed Red Star Yeast in 1/2 cup lukewarm water, in large (4-qt.) mixing bowl.

Combine..... 1/2 cup sugar, 1/2 cup shortening, 4 teaspoons salt and 2 cups hot scalded milk. Stir until shortening is melted. Add 1/2 cup cold water. Cool to lukewarm.

Stir in..... 4 beaten eggs and the softened yeast.

Add gradually..... 9 to 10 cups sifted Pillsbury's BEST Enriched Flour to form a stiff dough.

Knead..... on lightly-floured surface until smooth and satiny, 5 to 7 minutes. (To knead, fold dough over on itself and push it lightly with palms of hands. Repeat this process rhythmically, turning dough one quarter way around each time.) Place in greased bowl and cover.

Let rise..... in warm place 65° to 90° F.) until light and doubled in size, 1 1/2 to 2 hours.

Punch down..... dough by plunging fist into center. Fold edges toward center, turn upside down in bowl and cover. Let rise 30 minutes.

Divide..... dough into three parts, two parts into rolls 1 1/2 to 2 inches in diameter (about 24 rolls). Place on greased baking sheets and let rise in warm place until light and doubled in size, about 45 minutes.

Shape..... remaining dough into 3 small loaves; place in greased 9 x 5 x 3-inch pan. Let rise in warm place until light and doubled in size, about 1 1/2 hours.

Bake..... in moderate oven (375°) until golden brown: 15 to 20 minutes for rolls, 35 to 40 minutes for loaves. Brush with butter while hot.



YOU GET A CLEANER WASH WITH CLOROX



Whitest and Brightest!

When you add Clorox to your washday suds, you're adding extra cleanliness to your wash. White cotton, linen, nylon and rayon come out extra white... color-fast cotton and linen come out extra bright. Clorox does a better job of bleaching and stain removing than any other type of laundering product. That's why the cleanest wash you can get is a wash that's Clorox-clean!

Safest for F

Clorox adds extra health protection, too! For Clorox is a more efficient germ killer than any other bleach... any other laundering product! It's a good health habit to disinfect your wash with Clorox every time!



New Pillsbury's BEST Flour in the specially marked 25 or 50 lb. sacks will give you better bread and rolls...or we'll pay DOUBLE YOUR MONEY BACK