

SPORTS

Martinez Choice Over Gil Turner

New York — Vince Martinez is favored at 7-5 to beat Gil Turner Wednesday night at the Philadelphia arena in their 12-round welterweight elimination, which features this week's boxing schedule.

This nationally televised ABC bout between counter-puncher Martinez of Paterson, N.J., and aggressive Turner of Philadelphia is the second in an elimination series for the vacant welterweight crown. Cuban Isaac Logart beat Mexican Gaspar Ortega in the first.

Turner, 27, forces the pace and throws the most leather, but Martinez, 28, is the smarter fighter and harder puncher. Turner's 25 knockouts in his 55-15-1 record were achieved largely by wearing down his opponents. Martinez's 30 kayos on his 58-5-0 list were largely the result of blasting.

Johnson-Whitehurst

Friday night's nationally televised and broadcast NBC 10-rounder brings together Harold Johnson, top light heavyweight contender, and heavyweight Bert Whitehurst at the Syracuse, N.Y., auditorium.

Johnson of Philadelphia, who usually weighs about 178 pounds, is a top-favorite at 3-1 over Whitehurst of Baltimore, a 190-pounder. Johnson is the slicker boxer and harder hitter.

Without benefit of TV, featherweight champion Willie Pep meets lightweight Tommy Tibbs at Boston to-night in an attractive 10-rounder. Rapid-fire Tibbs is a slight favorite at 6-5.

The postponed non-title fight between light heavyweight champion Archie Moore and Luis Ignacio of Brazil is scheduled for Friday night at Sao Paulo, Brazil.

The week's boxing schedule includes:

Tuesday—Boston—Willie Pep vs. Tommy Tibbs and Randy Sandy vs. Eddie Andrews; London—Orlando Zuleta vs. Willie Towel; San Bernardino, Calif.—Jimmy Lester vs. Herman Duncan; Sacramento, Calif.—Jackie Trillano vs. Frankie Salas; Richmond, Calif.—Jackie Torne vs. Ernie Cab; Chicago—Chuck Adams vs. Eddie Perkins.

Wednesday—Philadelphia Arena—Vince Martinez vs. Gil Turner.

Thursday—Los Angeles—Ernesto Parra vs. Lauro Salas; Portland, Ore.—Phil Moye vs. Jimmy Martinez; Revere, Mass.—Jackson Brown vs. Guy Laconte.

Friday—Syracuse, N.Y.—Auditorium—Harold Johnson vs. Bert Whitehurst; San Diego, Calif.—Frankie Daniels vs. Monroe Betteff; Sao Paulo, Brazil—Archie Moore vs. Luis Ignacio, non-title.

Saturday—Hollywood, Calif.—Boots Monroe vs. Kid Trapunto.

Portlander Asks NCAA Approval for Plastic Glove for Back of Hand

Portland — Frederick C. Iverson, North Bend, Ore., designer, said today he plans to ask the NCAA to approve a soft leather, plastic-covered glove he has designed to protect the back of football players' hands.

Iverson said the glove was used last season by Iowa with approval of Big 10 officials. It weighs three ounces.

He said he got the idea for the glove several years ago after his son, Richard, lost the use of a thumb because of a cleat-injury.

The Oregon School Activities association said it could not use the glove because it had been ruled out by the National Federation of High School Athletics in Chicago.

Oden Hawes, OSAA assistant secretary, said it also was decided at the National High School Alliance convention in Lexington, Ky., that high schools were not ready for that type of equipment.

Iowa team officials said the gloves proved very satisfactory.

CARDS SIGN DICKINSON BEARS SIGN DICKINSON

Hattiesburg, Miss. — Richard Bo Dickinson, junior halfback of Mississippi Southern college who was selected in the National Football league player draft a year ago by the Chicago Bears, has signed to play for the Bears next season.

PROCHASKA JOINS CARDS

Chicago — Roy Prochaska, who was head coach Frank Ivy's chief assistant with the Edmonton Eskimos in Canadian professional football, has joined the staff Ivy is building in his new role as coach of the Chicago Cardinals.

McCANN REJOINS KNICKS

New York — Brendan McCann, former St. Bonaventure player who had been farmed out to the minor leagues, has been recalled by the New York Knicks of the National Basketball assn., and will join the team in Cincinnati for tonight's game against the Royals.

County Deaths Show Increase Over 1956, Report Reveals

Statistics released by the Jackson county public health office for 1957 show 631 deaths in the county during the year, an increase of 27 from 1956.

Heart and circulation trouble was the main cause of death during the year with 377, an increase of 45 more than the previous year.

Last year there were 1,367 births in Jackson county of which 708 were males and 659 females. This is a decrease of 88 births from 1956. Of the births, 18 were born at home and one in a doctor's office. The others were born in hospitals. Two hundred nine of the births were registered in the Ashland district.

Other Causes

Causes of death during the year were, in addition to heart and circulation problems, cancer and tumors, 93; accident and violence, 54; respiratory system, 38; early infancy, 21; digestive system, 18; genito-urinary system, 10; natural causes, 7; infectious diseases, brain tumor, and senility, two each; and diseases of the bone, childbirth, diseases of nutrition and endocrine system, and alcoholism, one each. Two deaths were undetermined, according to the health office.

There were no deaths during the past year by tuberculosis, reports show. One death was attributed to this cause in 1956.

Deaths in the county according to age groups show that the largest number, 309, were in the 70 and older group with 142 deaths in the 60 to 69 year category. Twenty-eight deaths were infants under one year of age, with seven deaths for children one to four years of age, with eight deaths from five years through nineteen, for the year.

Death Rate

The death rate for 1957 was 8.9 per 1,000 population compared to 9.4 one year ago.

Grange Notes

Lake Creek Grange

Lake Creek Grange had four visitors from Eagle Point Grange. Pomona Master Bob Bitterling and his wife, and Mr. and Mrs. Jones. Bitterling spoke on the hope of Camp White becoming a veterans center. The hospital facilities are available and our Grange is in favor of the project.

Ira Woolfolk reported that the date for registering to be eligible to vote on the Oregon Beef commission that has been extended to Jan. 21. Mrs. Bob Bitterling announced that Pomona Grange will be held on Jan. 25 at Roxy Ann Grange hall.

Our Grange is asking members to save their coffee bands to eventually get an electric percolator. The coffee maker is entirely free when the required amount of bands has been collected. Carl Ribblet contributed an electric heater to be used on the piano; our hall becomes quite damp during the winter months.

The birthday of Mrs. Ozie Burrell was honored at the January meeting. A cake baked and decorated by Mrs. Faye Burrell was cut by the honored member. She received a gift from the members, too. Lecturer Betty Bradshaw asked each to give a New Year's resolution. She also prepared a game using the numbers from 1 to 9, which all enjoyed.

The next meeting of Lake Creek Grange will be held on Feb. 14 at 8:30 p.m. Members are asked to bring sandwiches.

Butte Falls Grange

Officers of the Butte Falls Grange will be installed at the regular social night meeting, Jan. 18 at the high school auditorium.

Cards and dancing will follow the installation, which will begin at 7:30 p.m.

Every one is invited and asked to bring sandwiches.

Central Point Grange

The regular meeting of the Central Point Grange will be held Friday, Jan. 17, at 8 p.m. in the Grange hall in Central Point. Worthy Master Otto Niedermeyer would like a good attendance as there is a matter or two of important business that will be considered.

The lecturer's program will be a demonstration and talk on "The Use of Native Material from Forest, Field, and Garden for Home and Hall Winter Arrangements and Decorations," to be presented by Mrs. R. N. Kay and Mrs. L. C. Gordon of the Central Point Garden club. They also will have a collection of weeds with identification on the display table.

Members on the serving committee for this meeting are Mr. and Mrs. Gaston Floux, Mr. and Mrs. Harry Dunn, and Mr. and Mrs. Lloyd Hammond.

Boeing Receives Bomarc Contract

Washington — The Air Force Monday placed a multi-million dollar order with Boeing Airplane Co., Seattle, for 100 Bomarc air defense guided missiles.

Boeing announced the contract and said it also included the complicated ground equipment that will be needed to arm two bases for the long-range pilotless interceptor missile.

The Air Force has indicated that its first Bomarc will be deployed at Dow Air Force Base, Maine; McGuire Air Force Base, N. J.; Otis Air Force Base, Mass., and Suffolk County Air Force Base, Long Island, N. Y.

The Bomarc travels more than 1,500 miles an hour. It has been officially said that it can knock down a target more than 100 miles from its launching site. But it is believed to have a range of 250 miles.

Boeing did not give the dollar value of the contract, saying that awaited further negotiations.

Portland Council Elects Secretary

Portland — Ed Whelan, 32, Monday night was elected secretary-treasurer of the Portland Central Labor Council over Gust Anderson by a margin of 16 votes.

In an election Dec. 9 Anderson had defeated Whelan 131 to 121. The vote Monday night was 172 to 156.

George Meany, AFL-CIO president, ordered a new election after ousted Teamster delegates voted in the earlier one.

Anderson, 70, had held the position for 35 years. Whelan will take office next Monday night as secretary-treasurer of the merged Multnomah County Labor Council and the CIO Industrial Union Council.

The job has been paying \$6500 a year.

Grain Elevator Destroyed by Fire

Pomeroy, Wash. — A fire destroyed a grain elevator of the Pomeroy Grain Growers, Inc., here Monday and the tons of wheat stored in the elevator were expected to smolder for several days.

Claude Buchett, manager of the corporation, said the fire started about noon and was under control in about an hour. It was believed the fire began in the basement of the building but the exact cause was not determined.

Buchett said the elevator was valued at \$154,000 and probably was a total loss. The elevator contained wheat valued at about \$250,000 and it was heavily damaged.

4-H CLUB NEWS

Griffin Creek Dairy Club

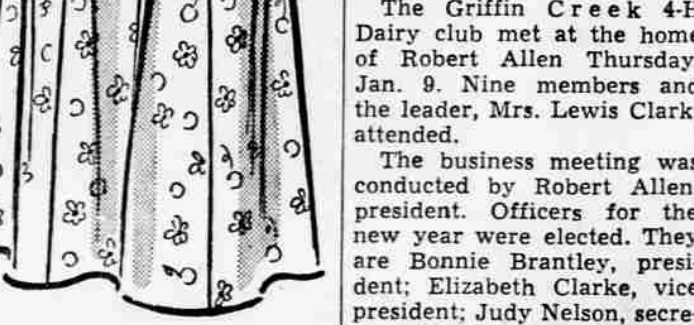
The Griffin Creek 4-H Dairy club met at the home of Robert Allen Thursday, Jan. 9. Nine members and the leader, Mrs. Lewis Clark, attended.

The business meeting was conducted by Robert Allen, president. Officers for the new year were elected. They are Bonnie Brantley, president; Elizabeth Clarke, vice president; Judy Nelson, secretary; Martha Anne Goodwin, song and game leader; Robert Allen, reporter. Registration forms for the coming year were filled out.

After a period of games, refreshments were served by the host.

The next meeting will be held Feb. 6 at the Goodwin home.

Wonder-Dress



9230 14 1/2-24 1/2 by Marian Martin

Half-size wonder dress. Easy on the eyes, easy to slip into and sew-easiest of spring. Look at the diagram. Printed Pattern proportioned for short, fuller figures—no alteration worries.

Printed Pattern 9230: Half Sizes 14 1/2, 16 1/2, 18 1/2, 20 1/2, 22 1/2, 24 1/2. Size 16 1/2 requires 3 3/8 yards 35-inch fabric.

Printed directions on each pattern part. Easier, accurate. Send FIFTY CENTS (coins) for this pattern—add 5 cents for each pattern for 1st-class mailing. Send to Marian Martin, care of Medford Mail Tribune, Pattern Dept., 232 West 18th St., New York 11, N. Y. Print plainly NAME, ADDRESS with SIZE and STYLE NUMBER

Rocky Reach Dam Financing Secured

Wenatchee, Wash. — The financing of Rocky Reach dam was successfully concluded Monday when the Chelan County Public Utility District received the money from the sale of \$250 million worth of revenue bonds.

Work on the project, located on the Columbia river near here, can now continue without interruption of the PUD said.

Delivery of the money was held up while the bonds were printed and signed by the investment firms which had committed themselves to furnish the needed funds. More than a week was required to sign the bonds.

Safecrackers Get \$19,545 at Portland

Portland — Police said today that safecrackers got away with \$19,545 worth of government bonds and \$440 in cash in a burglary at the Grant High pharmacy here.

The burglary was discovered Monday. The treasury department told proprietor Curran L. McFadden it would replace the stolen bonds which were the property of McFadden and his family. The burglars also took three watches and about eight dozen candy bars.

Former Police Chief At Portland Dies

Portland — James Fleming, 62, Portland police chief in 1948, died Monday in Balboa, Calif., while visiting a son.

Fleming, who served 30 years with the police bureau, rose from patrolman to chief and had a record of never having been reprimanded by a commanding officer.

McLEOD Mooreheads Return Home

By CAROLINE L. HARDING

McLeod — Mr. and Mrs. Charlie Moorehead who spent the holidays with relatives in San Francisco have returned home.

A surprise party was given Mrs. Ray Gillespie at her home Wednesday evening, the occasion being her birthday. Those present were Mr. and Mrs. Bud Chandler, Mr. and Mrs. Carl Richardson, Mr. and Mrs. Roy Vaughn and Ray, Bud and Don Gillespie.

Mrs. Minnie Easten has gone to Arizona to visit friends for a couple of weeks after which she will go to Pasadena, Calif., to visit her son and family and return home in the spring.

Winter VACATIONING in California? VISIT SANTA CRUZ

Santa Cruz... California's famous summer playground... is now a favorite winter vacation spot, too! Smart winter vacationists discover the refreshing tempo of an historic past, thrill to Santa Cruz' warm winter days, bright skies, winter gardens in bloom, myriad sports... golf at its best! Verdant hills and valleys, giant redwoods march beside the Pacific Coast's most beautiful seascapes!

WINTER VACATION COSTS ARE LOWER IN SANTA CRUZ!

Fine highways approach from all California points. FREE full-color literature will tell you more.

Today... Write for the SANTA CRUZ Story!

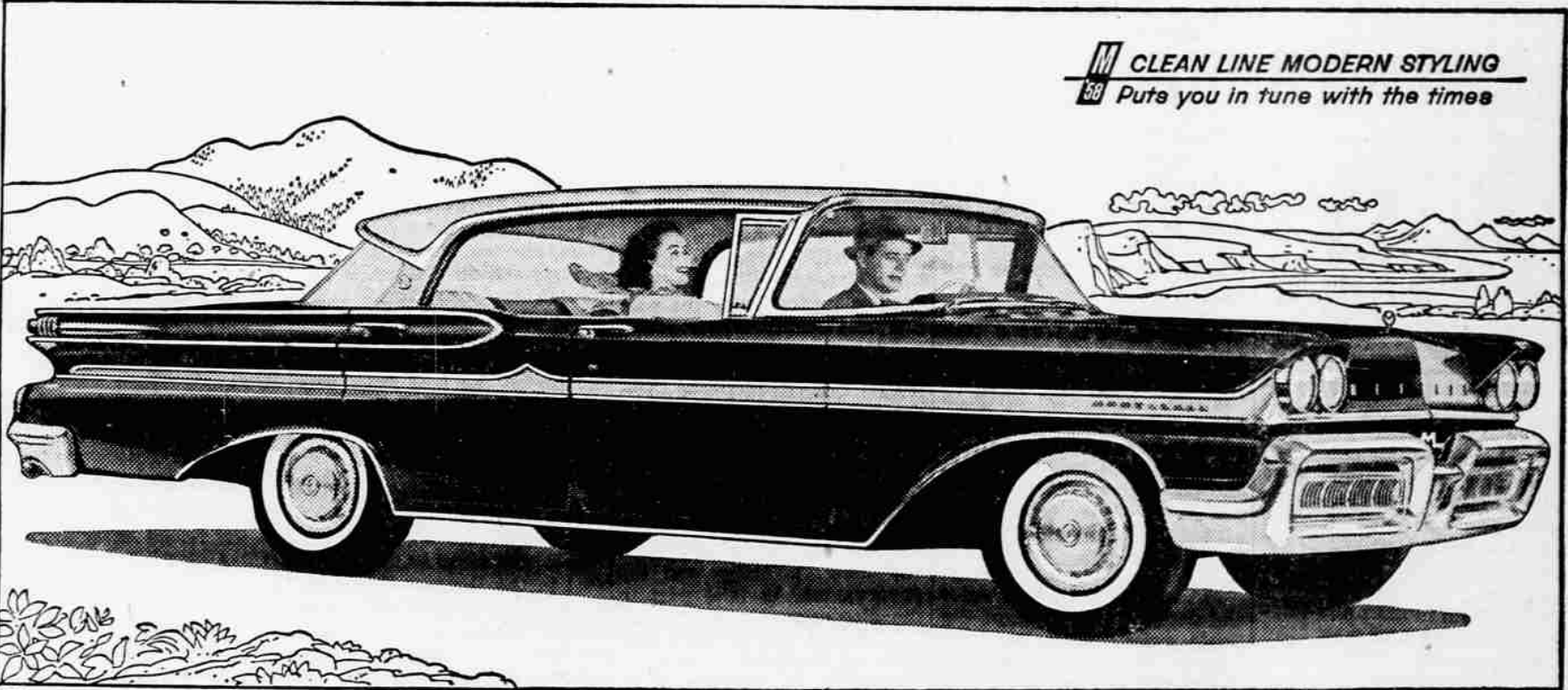
Santa Cruz Chamber of Commerce Dept. 0.7 Civic Auditorium, Santa Cruz, Calif. Please send full-color literature describing Santa Cruz vacation attractions.

Name _____ Address _____ City & State _____

PLAZA HOTEL "Shoppingly Located" Broadway at Washington In Down Town PORTLAND C. V. Cooley, Mgr. For the Budget Traveler * Single With Bath \$4.00 * Low Double Rate * New Family Rate Plan American Hotel Association Credit Cards Honored

1958 PERFORMANCE CHAMPION

Mercury outperforms every car in America—regardless of price. Mercury's new money-saving Marauder V-8 engines bring you more power—FROM LESS GAS.



CLEAN LINE MODERN STYLING Puts you in tune with the times

PROOF! MORE POWER PER POUND THAN ANY OTHER CAR

HIGHEST-PRICED FIELD				MEDIUM-PRICED FIELD			
MAKE	WEIGHT	HP	HP PER 1000 LBS.	MAKE	WEIGHT	HP	HP PER 1000 LBS.
CAR C	4675	310	66.31	CAR B	4201	300	71.41
CAR I	4590	345	75.16	CAR CH	4195	345	82.24
CAR L	4842	375	77.45	CAR D	3690	295	79.95
LOW-PRICED FIELD				CAR DS	3930	305	77.61
MAKE	WEIGHT	HP	HP PER 1000 LBS.	CAR E	4230	345	81.56
CAR C	3489	185	53.02	CAR O	4106	305	74.28
CAR F	3526	265	75.16	CAR P	3940	285	72.34
CAR P	3455	225	66.12	CAR S	3395	195	66.27
CAR R	3347	215	64.24	BIG M 4333 360 83.08			

BASED ON 4-DOOR MODELS WITH HIGHEST STANDARD HORSEPOWER-TO-WEIGHT RATIO

NEW! HIGHEST HORSEPOWER IN THE FIELD!

By the most important yardstick of a car's performance—power-per-pound—Mercury has no equal. It outclasses every full-sized car in America.

In actual horsepower, Mercury not only leads its field with 360 hp, but surpasses all cars except one—and that one costs almost \$1,000 more.

NEW ECONOMY! MORE POWER FROM LESS GAS!

Mercury's championship performance is the result of a completely new family of money-saving Marauder V-8 engines—one for each series of cars. 312 hp for the Montreys, 330 hp for the Montclairs, and 360 hp for the Park Lanes. These engines are of a revolutionary new Cool-Power design. Power and fuel once lost to heat and friction are put to work for you. You get more power from less gas.

SPECIAL TO OWNERS OF THE "LOW-PRICED 3"

Why settle for less than the Performance Champion? Mercury prices start below many models of smaller, far less powerful cars!

Take 10 minutes to Test Drive the '58 MERCURY Performance Champion

SEE THE MERCURY DEALER IN YOUR COMMUNITY

Buy At **Builders Supply**

QUALITY BLOCKS
Bricks, Flues, Drain Tile
727
W. McAndrews Ph. SP 2-4107