

## Passenger Asset To Driver, Magaine Says

Chicago — **MP** — The backseat driver has been maligned too long, according to an insurance company publication.

An article in Home & Highway magazine says a passenger can be an asset to a driver.

But driver and passenger should work as a team, the magazine added, with the passenger assuming the role of "co-pilot" to point out dangers not easily seen from behind the wheel.

The driver should be in charge, the article said, but should assign certain duties to the passenger. On cross-country trips, for example, the passenger can do the map reading and read the route signs, leaving the driver to concentrate on the road. When changing lanes, the "co-pilot" can help the driver by covering blind spots on the right.

But the magazine offered this advice to backseat drivers:

"Be specific about dangers you see. If you just yell, 'Look out!' you only startle the driver without giving him any idea of what he has to avoid."

And don't nag or distract the man at the wheel with needless advice.

## Blacksmith Not Worried About Horses Leaving

Sebewaing, Mich. — **MP** — A 68-year-old blacksmith who has been in the business almost 50 years and has never shod a horse says he is not the least bit concerned that his trade faces near extinction because Dobbin is passe.

"In fact, I don't like horses," Frank H. Kaatz said.

He operates one of the last of the blacksmith shops in Michigan but considers himself a marine blacksmith because he concentrates on fashioning ice spuds, fish spears, gaff hooks and anchors.

## Dog Visits Home, But Not With Its Owner

Detroit — **MP** — Margaret Boone grimaced when a mud-covered dog followed a guest into her home.

But she decided a good hostess should extend hospitality to the pet of a guest, even when the dog bounced onto her sofa.

When the guest, Mrs. Mary DeMeulenaere, started to leave without the dog, Miss Boone asked:

"Aren't you forgetting your dog?"

"My dog?" replied Mrs. DeMeulenaere. "I thought it belonged to you. It was gnawing on a bone on your front porch when I got here."



SWEEEPING THROUGH CANYON, San Gabriel Mountain fire burns 18,000 acres of valuable watershed near Los Angeles, threatens many communities. (International)

## Zoo Director Says Feeding Don't Hurt

Chicago — **MP** — The director of suburban Brookfield Zoo disagrees with the theory that public feeding of zoo animals results in an unbalanced diet which may harm their health.

Robert Bean believes visitors to zoos are missing a privilege if they've never tossed peanuts, popcorn and the like to zoo animals.

"Wild animals don't founder on food. They know when to stop."

Bean said that since the Brookfield Zoo opened in 1934, he has never known any of its animals to have become sick from over-eating food offered by the public.

However, he agrees that there are certain times when animals do need special diets and, on these occasions, the animals are placed behind glass and the public asked not to feed them. The public generally is "wonderfully cooperative," Bean said.

Most zoo animals like a hand-out, Bean said. "Bears seem to be natural beggars," he added. "They put on quite a show."

The Winnipeg river, within Manitoba to Lake Winnipeg, has a total drop of 271 feet and it is a major source of hydroelectric power in that area.

The Alps mountain range extends through parts of the five countries of central Europe, mostly in Switzerland.

## German Buyer Goes On Bicycle Tour

Cleveland — **MP** — Walter A. Hamann, who left Germany on a globe-girding bicycle tour to study merchandising methods, said he found worthwhile new ideas "only in Canada and the United States."

Hamann, 36, is a buyer and group-manager for a German department store chain. He began his tour two years ago and has cycled 26,000 miles. He expects to keep traveling for another 18 months.

"I'm particularly impressed here by your services to keep the customer happy and comfortable," he said.

"The Germany people are so conservative that they still want clerks to serve them," the merchandiser said. He explained that big neighborhood shopping centers "wouldn't suit Germany because our cities aren't spread out, like yours."

Starting out with \$500, Hamann has kept his traveling fund virtually intact by selling dispatches to a German newspaper and by working in a Colombo mineral water factory and in Singapore and Sydney department stores.

His travels have taken him through Germany, Austria, Yugoslavia, Greece, Turkey, Syria, Jordan, Iraq, Iran West and East, Pakistan, India, Burma, Thailand, Malaya, New Zealand, Fiji and Hawaii.

## Boat Operators May Get \$2 Million Back

Chicago — **MP** — The nation's boating operators will have a chance to collect as much as \$2,500,000 in refunded fuel tax money from the government this year.

The estimate was made by the Outboard Boating Club of America, a national association of boating enthusiasts and manufacturers and sellers of marine equipment.

The association estimated that about 250 million gallons of gasoline were consumed from July 1, 1956, through June, 1957.

It was pointed out to members that the highway revenue act of 1956 boosted federal excise taxes on gasoline from two to three cents a gallon, with the increase earmarked to help finance the new federal highway program.

However, the bill provided that the one-cent increase was refundable if the fuel was used otherwise than in a highway vehicle. This includes gasoline used by motorboats, the OBC said.

Camels are essentially animals of the arid deserts and have a great aversion to water, only with difficulty being persuaded to cross even the smallest stream.

The panda is a member of the raccoon family. The word "panda" is said to be a corruption of the native Nepalese name when means "bamboo eater."

Thursday, November 22, 1957

WEDFORD (OREGON) MAIL TRIBUNE

## Nuclear Power Group Not Known Among Local People

Chicago — **MP** — Not many persons have heard of the Nuclear Power Group, Inc., or, for that matter of Grundy County. Yet, this group in a relatively obscure Illinois county is making history in one of the most exciting adventures ever undertaken in the field of peacetime atomic science.

Grundy County lies some 50 miles southwest of Chicago. Here, eight companies, including utilities providing electric service in 12 of the 48 states, have banded together to form a cooperative enterprise known as Nuclear Power Group, Inc.

Their purpose is to build the largest all-nuclear plant in this country, the Dresden Nuclear Power Station.

Dresden, which is now under construction, will occupy a 950-acre site at a point where the Kankakee and Des Plaines Rivers join to become the mighty Illinois.

At its completion late in 1960, Dresden will harness and put into action atomic energy to add 180,000 kilowatts to northern Illinois' reservoir of electricity.

Main contributor to the Dresden project is Commonwealth Edison Co., which will pay 30 millions of the 45-million-dollar contract price plus site and overhead costs.

Although Commonwealth Edison will own and operate the full-scale nuclear power plant, all members of Nuclear Power Group are participating in its design, planning and construction.

Dresden's makeup is something from a science-fiction magazine. Although the turbine room is like that of most power plants, the reactor will be enclosed in a sphere-type steel building 190 feet in diameter.

Engineers say a conventional coal-fired generating plant the size of Dresden would burn about 1,700 tons of coal a day, or about 600,000 tons a year. Yet, a 60-ton core loading of slightly enriched uranium is expected to last six years.

In other words, Dresden eventually will use 10 tons of uranium fuel a year to do the work of more than 600,000 tons of coal, or about 10,000 carloads.

To make the project even more interesting to taxpayers, Dresden is being paid for entirely by private funds. No government subsidy is involved.

world's population, the United States produces about half of the world's energy and industrial output—a major reason why we enjoy the highest standard of living the world has ever known.

"Abundant electricity has been the lifeblood of this phenomenal achievement, and the demand for more power is ever increasing."

"By 1975, it's estimated that the United States will be using nearly four times as much electricity as today."

Thus—Dresden.

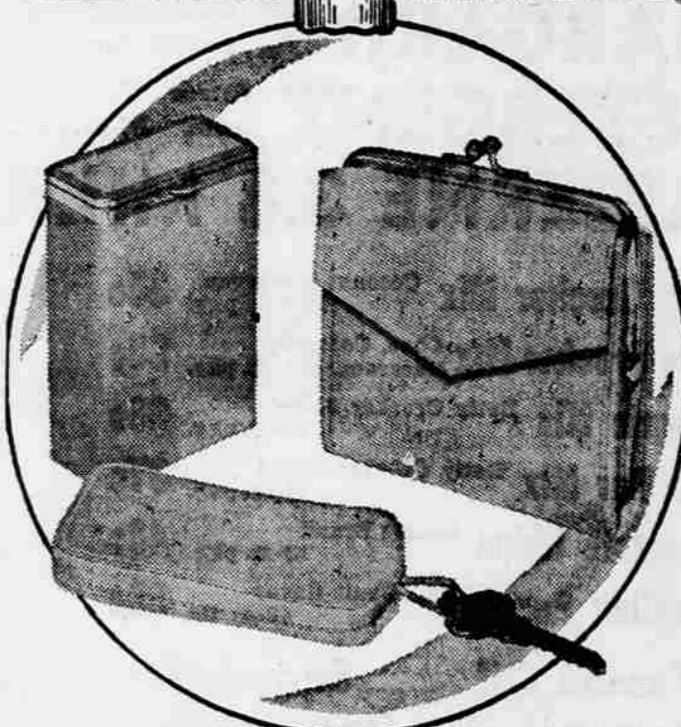
Cork trees live 300 to 400 years and may be stripped every 10 years or so. The best commercial varieties of cork are obtained when the trees are 40 to 50 years old.

for a merrier christmas

give

PRINCESS GARDNER

PERSIAN PRINCESS MATCHED ACCESSORIES



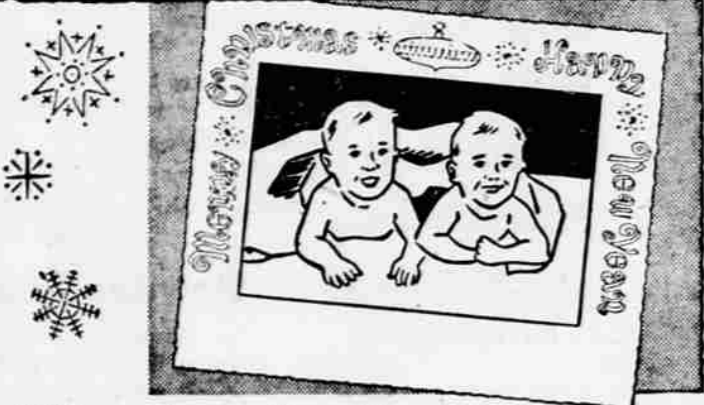
Gahna Cowhide... gleam studded! Christmas white and popular colors.

The Continental French Purse. Roomy, leather-lined coin purse. Pick-A-Bill slot. Charge-Plate pocket. Removable photo-card case. . . . \$5.00  
Cigarette Case, adjustable for king or regular size. . . . \$3.95  
Key Card, Zipper closing. . . . \$2.95

Not Shown:  
The Registrar Billfold. Removable photo-card case with Add-A-Pass bar for adding more windows. . . . \$5.00  
The Continental Clutch. For handbag, or as an evening purse. \$5.95  
The Demoiselle... miniature French Purse. Just right for small handbags. . . . \$3.95  
The Eye Glass Case. . . . \$2.95  
The Cigarette Lighter. . . . \$2.50

Get your money's worth for your money... Get PRINCESS GARDNER MATCHED ACCESSORIES

Swem's BOOKS • GIFTS • RECORDS 217 EAST MAIN • MEDFORD, ORE.



This year personalize with Photo-Greeting Cards

Start with the negative from a favorite snapshot. Then pick from the many designs available in the new BIG-picture 3X style. Prices are moderate. Order early and avoid the last-minute rush.

• We Give S&H Green Stamps •  
**ANDERS PHOTO SHOP**

232 East Main Phone SP 2-5646



**COOKS DINNER IN SECONDS!**

Entertaining is a snap with the Electronic Range. It even puts on a floor show itself. Guests like to watch it perform when frozen foods and meats thaw in minutes instead of hours. YOUR WHOLE COOKING ROUTINE IS TURNED AROUND. Now you set the table first, then cook the food. You make the salad before baking the potatoes... and it means minutes in the kitchen instead of hours. Those unexpected guests are no problem. This is particularly true with a freezer in the family. Frozen cake

thawed and heated in seconds tastes fresh as the day it was baked. Microwaves create heat in food. The only heat produced is in the food. The air in the oven, the oven itself, and the utensils remain at room temperature, except the small amount of heat picked up from the food or when using the browning unit. JUST STUDY THE COOKING TIME LISTED AT THE BOTTOM OF THE BLOCK IN THIS ILLUSTRATION. HOW DOES YOUR PRESENT TIME COMPARE?

**The BIG Y APPLIANCE is PROUD to PRESENT The Westinghouse "SPEED of LIGHT" Electronic Oven**

**DEMONSTRATION**

Friday, Saturday and Sunday

**Come Have Lunch With Us! Daily 9 A.M. to 9 P.M.**

Taste the Difference—Tomorrow's Cooking Today

**HERE'S What Speed of Light Means:**

- BAKED APPLE — 1 minute 30 seconds
- CORN Roasted in the husk — 3 minutes
- CAKE — 3 minutes
- 5 lb. ROLLED ROAST — 30 minutes
- 3 1/2 lb. ROAST CHICKEN — 15 minutes
- 16 lb. TURKEY — 90 minutes
- Fresh Frozen BROCCOLI — 4 1/2 minutes

**SEE IT—TRY IT!**  
You'll Be Amazed!

**BIG Y APPLIANCE DEPT.**

North Pacific Highway

In the BIG Y SHOPPING CENTER

Phone SP 3-3052