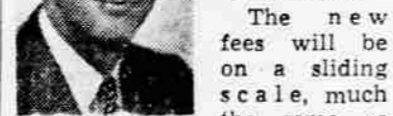




EXAMINING WRECKAGE of Pan American Clipper are Inspectors Leon Cuddeback (left) and Earl Mitchell of Civil Aeronautics Board, who hope to find a clue in San Francisco inquiry to disaster which cost 44 lives. (International)

Higher Grazing Fees On BLM Lands Slated To Start January 1

By A. ROBERT SMITH
Mail-Tribune Correspondent
Washington — Higher grazing fees for public lands will be charged starting Jan. 1 by the Bureau of Land Management, Interior Secretary Fred A. Seaton announced Monday.



A. Robert Smith

The new fees will be on a sliding scale, much the same as charged by the U.S. Forest Service, based upon the average livestock prices at western markets for the preceding year.

The present fee charged by BLM is 15 cents a month per head of cattle, 15 cents for five sheep or goats and 30 cents per horse. Current livestock price trends indicate fees will be higher next year under the new formula, said Seaton, but no charges were indicated specifically for the new year.

New Directive
This decision will implement a directive sent out just a week ago by the Budget Bureau to all federal agencies to have them

increase a variety of federal fees to bring them more into line with the service rendered to private citizens and commercial interests. The bureau pointed out that BLM grazing fees were well below those charged by the Forest Service, the Bureau of Indian Affairs and by private landowners.

The bureau pointed out that in southern Oregon, where BLM charged 15 cents, Forest Service was charging 44 cents and Indian bureau \$1.38. Presumably the higher level of fees next year will approximate those of the Forest Service, since BLM plans to adopt the livestock price formula used by the Forest Service.

Seaton explained that the new sliding-scale formula will be based on price information furnished by the department of agriculture. Fees will be changed only when price fluctuations force them at least two cents up or down, he said.

Change Deferred
Seaton said originally the higher fees were scheduled to take effect the first of this year but he deferred approving them when the drought hit many western cattlemen. The new fees will affect some 30,000 stockmen who graze some 12,000,000 head of livestock on approximately 170,000,000 acres of range in the western states.

Under the new system, fees will be subject to change annually. It will be up to the head of BLM to set the new fees each year. The new formula has been approved by the National Advisory Board Council for grazing.

Local Man Donates Model Railroad

Approximately \$3,000 worth of model railroad equipment was shipped yesterday to Boys' Town in Nebraska as a Christmas gift from Joseph E. Taylor, 214 North Peach st., Medford, inquires revealed.

Taylor said the equipment is constructed to scale and includes 28 model locomotives, 94 coaches, a number of freight cars and passenger cars. The large gift package will also include 450 lengths of track in 12-inch sections, tunnels, bridges and automatic switches. A consolidated Freightways truck will pick the equipment up at Taylor's house.

Taylor said he belongs to a local model railroad club and this is equipment he has at home. He and five other club members have a model railroad layout in a large barn on the Walt Lewis place on the Phoenix Jacksonville highway. Taylor said. The 4,000 feet of track takes up about the entire second story of the barn, he added. The club has been constructing the layout for three years and aren't done yet, the model railroad fan said.

Taylor said he wrote the Catholic institution and received a letter saying the present would undoubtedly be the best one received. Taylor said he "just happened to think of the idea."

Miss Roberts Wins Speech Contest

Miss Sharon Roberts, St. Mary's High school junior, daughter of Mr. and Mrs. Lloyd O. Roberts, 633 South Holly st., was winner of the local run off in the Voice of Democracy contest sponsored by the Medford Junior Chamber of Commerce.

Subject for the speeches given Saturday, Nov. 23, at television station KBES-TV was "I Speak for Democracy."

Miss Roberts was one of four high school students who participated in the Saturday speak-off. Winners of various high schools in contests held previously were Lynn Hales, Medford High school senior, Miss Sheree Skipworth, Phoenix High school junior, and Miss Marjorie Edens, Jacksonville High school senior.

Miss Roberts will enter the district contest to be held in Ashland Nov. 26. Winner of that contest will enter the state competition.

Miss Roberts, who plans a career in music, hopes to attend Maryhurst college following graduation. At St. Mary's High school she is president of the national honor society, Durocher chapter, treasurer of her class, unit leader of the Sodality of Our Lady, co-editor of the school paper, "The Marion," member of the Marion choir and choralets, and a charter member of Horizon club. She also won first prize in a St. Mary's high school baking contest and first prize in the music division of the Disabled American Veteran's amateur contest in 1956.

Robert E. Lee was made a Confederate general June 14, 1861.

At the Grange

Gold Hill Grange
Gold Hill Grange met in regular session, Thursday, Nov. 21. Outstanding event of the meeting was the draping of the charter for departed member, E. C. Fiene.

Mr. and Mrs. Fiene were charter members of the Grange, and were very active in the work of the order until they moved away a few years ago to Banning, Calif. The sympathy of the Grangers and friends goes out to Sister Fiene, in her bereavement.

Supreme Court to Look Into Refusal Power

Washington — The Supreme Court agreed today to look into the State Department's power to refuse passports to citizens.

The court accepted for review an appeal by artist Rockwell Kent, Eusable Forks, N. Y., and one by psychiatrist Walter Briebl, Los Angeles. Both were denied passports by Secretary of State John Foster Dulles because they refused to sign a non-Communist affidavit.

During a recent typhoon in the Philippines area, a total rainfall of about 88 inches was recorded in four days.

Mobil
Distributor
"OIL TO BURN"
Let Us Fill Your Tank Now
Medford Fuel Co.
Tel. SP. 2-2111 • Court & McAndrews
WE GIVE 5¢ GREEN STAMPS

Rock Threatens 10 Homes in Canada

Prince Rupert, B. C. — Thousands of tons of rock that destroyed three homes and took seven lives here Friday were today threatening another 10 homes in the area.

Royal Canadian Mounted Police ordered families to evacuate the homes while bulldozers, cranes and power saws attempted to clear a mass of rubble.

The bodies of six of the seven dead were still unrecovered. Two children were dug out of the rubble Saturday, one dead. The survivor was an 18-month-old girl, reported in fair condition.

All communications with this city of 10,500 were cut off until Sunday afternoon. Some tele-

phone and telegraph facilities have been restored and details of the rockslide started filtering out.

Oswego Man Killed in Sunday Night Crash

Portland — A 42-year-old Oswego man, Dennis J. Lund, was killed Sunday night when his car skidded 122 feet on wet pavement and smashed into a girder on the Hawthorne bridge. He was dead on arrival at a Portland hospital.

Lund, a representative of the American Distilling Co., was Portland's 40th traffic death of 1957, as compared with 36 at this time last year.

SEE IT NOW!

**"Speed of Light"
Electronic Cooking
by WESTINGHOUSE**

BIG Y APPLIANCE DEPT.

In the Big Y Shopping Center

Ph. SP 3-3052

For
holiday cheer

**OLD
HERMITAGE**

in handsome
holiday dress

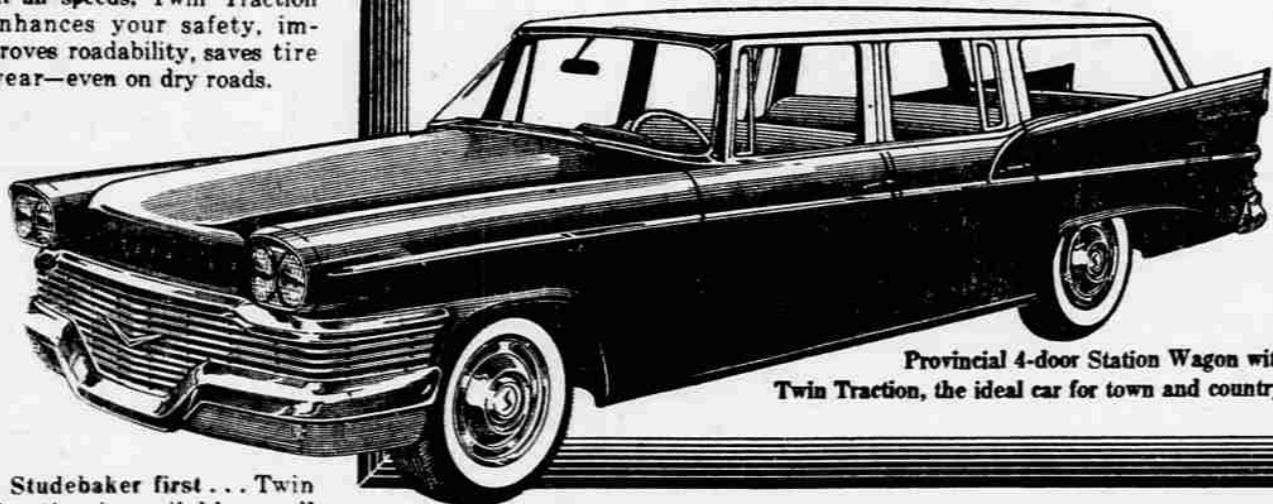
Glittering and gay... wrapped
and ready to go right under the tree,
let Old Hermitage solve all your
gift problems for you!



You get a truly new and eye-opening driving experience with exclusive Twin Traction. One drive will show you why! On slippery, muddy or sandy roads, Twin Traction automatically directs power to the rear wheel with best traction — powers you through with sure-footed stability.

At all speeds, Twin Traction enhances your safety, improves roadability, saves tire wear—even on dry roads.

Power your way through snow, ice, mud or sand... with
TWIN TRACTION
on the 1958 Studebakers and Packards



Provincial 4-door Station Wagon with Twin Traction, the ideal car for town and country.

A Studebaker first... Twin Traction is available on all Studebaker and Packard cars. Such advanced engineering combined with beautiful, Hawk-inspired styling makes the new '58 Studebakers and Packards the most desirable cars on the road. Guest-drive one, today!



Studebaker-Packard CORPORATION

Where pride of Workmanship comes first!

'DE' LEIGH MOTORS 134 So. Riverside, Medford, Oregon



6
YEARS OLD

HOLIDAY GIFT CARTONS
AVAILABLE AFTER DECEMBER 1st

THE OLD HERMITAGE COMPANY, BOONVILLE, KENTUCKY • DISTRIBUTED BY NATIONAL DISTILLERS PRODUCTS COMPANY • 86 PROOF