

Brewster Testifies In Larceny Trial Of Dave Beck Jr.

Seattle — Frank W. Brewster, chairman of the Western Conference of Teamsters, took the witness stand in the grand larceny trial of Dave Beck Jr., Saturday.

Beck Jr., son of outgoing Teamsters President Dave Beck, is accused of selling a 1953, as well as a 1951, Cadillac, belonging to the Teamsters Union and pocketing the money.

Called as a witness for the state, Brewster, who also was President of Joint Council 28, Local 174, and the Joint Council Building association, identified several books as financial records of Joint Council 28. Then, court was recessed for the lunch hour.

Brewster followed Donald McDonald on a 10-day western conference bookkeeper, to the stand.

Under direct examination, McDonald testified that his ledgers showing cash receipts for sales of union assets contained no record involving the sale of a 1953 Cadillac.

McDonald said that if the cars had been sold in a proper manner the books would show it. Beck allegedly sold the automobiles in 1954 and 1955.

Prior to McDonald's appearance Richard L. Stines, an assistant bank manager, identified a signature card signed by Beck. Stines initiated a check for \$1,850 which was cashed by Beck on Oct. 8, 1954. The state is attempting to prove that this check was one issued in payment for the 1951 Cadillac.

French Head Seeks Vote Of Confidence

Paris — Premier Felix Gaillard, in office only 11 days, called Saturday for a vote of confidence in the National Assembly on his emergency economic program. The vote will be taken Tuesday.

Gaillard's demand wound up an all-night session by the Assembly. The economic debate was interrupted Friday to permit Gaillard to read a statement criticizing Anglo-American arms shipments to Tunisia.

The United States also came under criticism from former premier Pierre Mendes-France in the financial debate.

Mendes-France said the taxes sought by the Gaillard government would not take care of France's financial troubles.



MARSHALL L. FERG Named Field Executive

Former Medford Man Named to Scout Post

Marshall L. Ferguson, former Medford resident, has been appointed new Boy Scout field executive in the Grays Harbor area, replacing Homer Paulson, who recently resigned.

Ferguson, former assistant scoutmaster and scoutmaster in Medford, lives in Aberdeen, Wash., with his wife and two daughters. He graduated from Medford High school in 1949 and attended Southern Oregon college.

Ferguson entered the Marine corps in 1950, and was in the service three years. He graduated from the national training school for scout executives in New Jersey in July.

He is the son of Mr. and Mrs. L. E. Ferguson, 1736 Stewart ave., Medford.

Art Will Be Shown In Vancouver, B. C.

Vancouver — An exhibition of 40 paintings by California painters will be shown at the University of British Columbia Art Gallery Nov. 19 to Dec. 14.

During the past year California painters' works have been exhibited in Brazil, New York and Canada.

Among painters represented in the UBC exhibition, which is being circulated by the Smithsonian Institution, are John Paul Jones, Richard Diebenkorn, Ynez Johnston and Lundy Siegrist.

The snapping turtle can feed only under water and unlike most other turtles, cannot draw its head or tail into its shell.

New Charge Plates Being Mailed by Medford Stores

Approximately 9,400 Charge Plates are being mailed out to active charge account customers of 11 Medford establishments, it was announced Friday.

Purpose of the small metal plates is to facilitate and speed up handling of charge accounts in the various Medford establishments belonging to the Charge Plate group, it was explained. The customer will hand the sales girl or attendant the small plate when a purchase is charged. Then, it will be placed in the "imprinter" and the name and address of the customer automatically stamped on the sales slip.

Stores Listed

Stores belonging to the group are Barker's clothing store, Brainerd's photographers, Burelson's ladies ready to wear store, Central Rexal drug company, Home Appliance company, Hubbard Brothers hardware, Rath's, Swem's book and gift store, Mann's department store, N-Way cleaners and Quality market.

"We feel this new system will be a convenience to the customer charging the purchase and to the store manager and personnel," said Bill Moffat, assistant manager of Mann's and chairman of the Charge Plate group in Medford. "It eliminates any mistakes in name spelling and addresses and speeds up handling the purchase."

Moffat explained that a number of stores in cities the size of Medford are now using the Charge Plate system with considerable success. These cities include Roseburg and Eugene, he said.

Those active charge customers who do not receive their plates by Monday or Tuesday should contact the member store of which they are a customer, Moffat said. The new plates may be used in all the member stores with the approval of the management, he added.

The chopped-off look of the ocean sunfish has given it the nickname of "headfish" since it appears to have no body at all.



WHEELING AND DEALING—Donald S. Gleason, Seattle representative for Prescolite Manufacturing corporation sits in his decorator-styled "mobile lighting show-room" now making its debut in the Medford area. Setting for the novel showroom is the rear of a converted Volkswagen ambulance. Volkswagen cars and trucks are handled locally by Morse Motors, 1201 North Riverside ave.

Court Records

MUNICIPAL COURT

DeWanna Cecil McCoy, defective equipment, \$2.50.

Joseph Edwin Owens, defective equipment, \$5.

Bianche Estelle Frisbie, violation of basic rule, \$10.

Carl McKinley Dallas Jr., violation of basic rule, \$10; disobeyed traffic signal, \$5.

Tommy Carlyle Natwick, 235 North Ivy st., disorderly conduct, \$100.

Lyle Melvin Russell, violation of basic rule, \$10.

Una Baker Inch, violation of basic rule, \$10.

Vivian Anders Anders, violation of basic rule, \$10.

David Edward Porter, 328 North Riverside ave., driving under the influence of intoxicating liquor, \$100 and 20 days in jail.

Harold Cory Sexton, disobeyed signal, \$5.

Duane Israel Hutchins, disobeyed traffic signal, \$5.

Lee H. Smith, no tail lights, \$5.

Donald Winston Haycraft, wrong way on a one-way street, \$10.

Vance Phillip Shugart, disobeyed traffic signal, \$5.

DISTRICT COURT

William Henry Dahl, no tail light, \$5.

Harry J. Palmer, overload, \$270.

Lucille Mae Ober, failure to stop at stop sign, \$5.

Gary LaVelle Guss, racing on a public highway, \$30.

Paul Sheldon Mollette, failure to dim lights, \$15.

Clyde Orville Bentley, failure to stop at stop sign, \$10, bail.

Robert Dale Warta, no warning device, \$10, bail.

Jack Leroy Wincont, overweight, \$15; operating motor vehicle while license suspended, \$55.

Sidney Anderson, drunk on public highway, \$30, bail.

Waldo Sharold Chapman, overweight, \$15.

MARRIAGE LICENSE APPLICATIONS

Jack Ronald Guntter, 309 Scenic dr., Medford, and Betty Irene Bushnell, 6050 Highway 99, Ashland.

Ray McDaniel, Ashland, and Mary Hazel Perry McCoy, 586 E. st., Ashland.

Thirty Rebels Die In Cuban Battle

Havana, Cuba — Thirty rebels were killed Thursday in the largest clash in six months between the Cuban Army and the forces of Fidel Castro, an Army communique said Saturday.

The communique said the battle took place near a new sugar mill at the hamlet of Ojo Del Agua in eastern Cuba's Oriente province.

The government forces suffered only four wounded, the communique said.

The Castro rebels have been burning sugar cane fields in an attempt to cripple the Cuban economy and crush the government of President Fulgencio Batista.

Crews Race Clock In Saving Homes On Seattle Crater

Seattle — City engineers raced the clock Saturday in an effort to save homes perched near the rim of a giant crater carved by a sewer line cave-in.

Repair crews worked on an around-the-clock basis to build a by-pass line around the 1600 block of Ravenna Boulevard

where 10 homes have been evacuated. Roy W. Morse, city engineer, said if the by-pass line goes into operation before the cave-in widens "there is a good chance of saving the houses."

"We can't do anything except watch it," he said. "There's a real danger of triggering more caving with any jarring. We could lose two or three homes right away."

The cave-in had opened up an awesome pit 60 feet deep and

about 200 feet long and 10 feet wide. It swallowed a 25-foot chestnut tree and a light standard, and has eaten away at the sandy soil to within eight feet of houses on either side of the street.



BEEF ON TIME!

Fill Your Locker or Freezer On Our Easy Payment Plan
BEEF AND PORK ON APPROVED CREDIT

Take Advantage of

Wholesale Prices

1/2 Beef ... 39¢ lb.

Hind 1/4 49c lb. - Front 1/4 34c lb.

1/2 BEEF and \$100.00
1/2 PORK.....

We Have
Plenty of
Lockers Available

Locker Rental May Be
Included in Payment
Plan

WILSON-
McCABE

Refrigerating Co.
SP 3-3300
Corner 4th & Fir

Chrystal Meat Market

Corner 4th & Fir

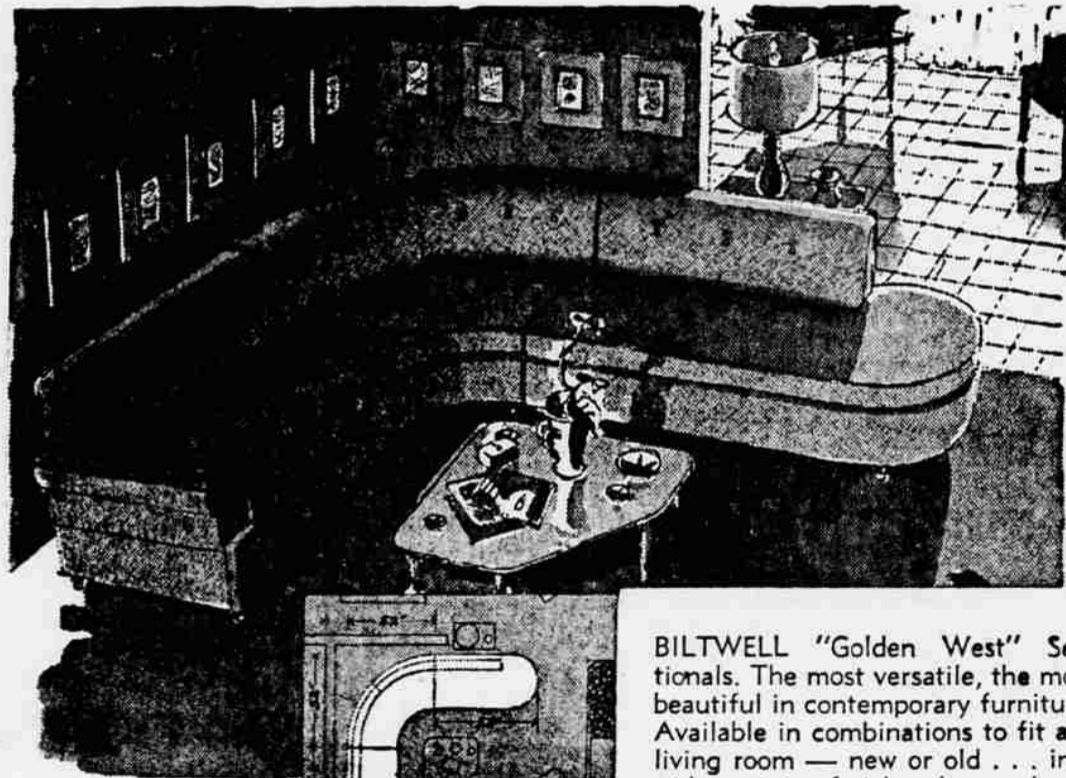
Phone SP 2-7315

Ready! Gifts of Furniture

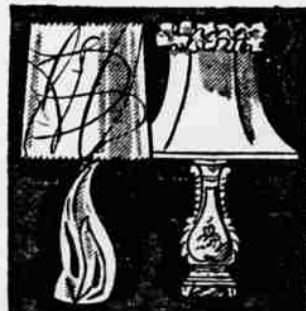
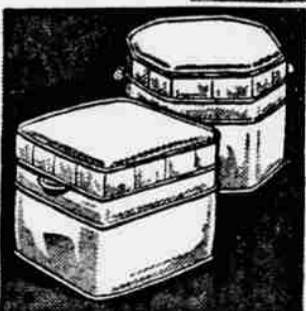
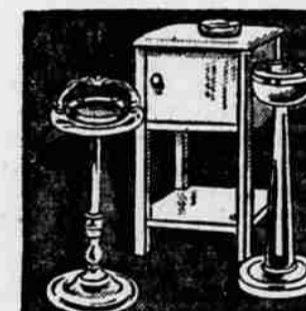
AWAIT WISE CHOOSING

every name on your list...every home will say 'welcome' to gifts like these

NOW at HERNDOBLER'S

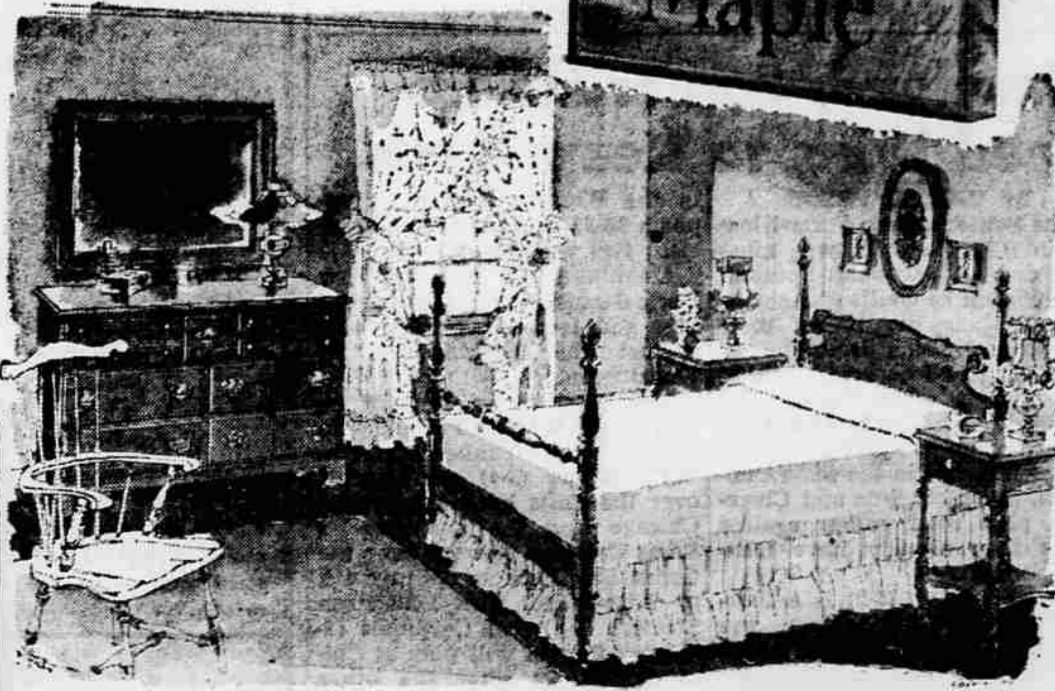


BILTWELL "Golden West" Sectionals. The most versatile, the most beautiful in contemporary furniture. Available in combinations to fit any living room — new or old... in a wide variety of rich colors and new decorator cover-fabrics.



Evenings
By
Appointments

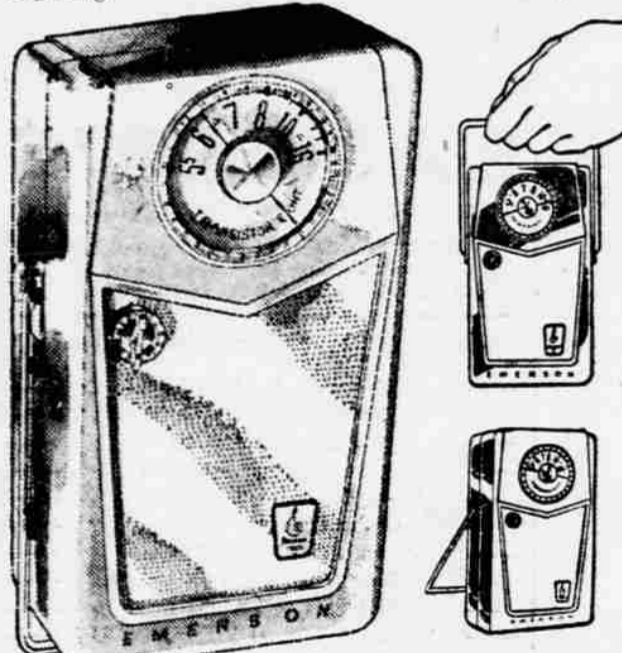
Here's a new look at least 150 years old. Never aging, always new, always lovely — that's the beauty of true colonial styling. And, in Flint Ridge Colonial Maple, that's what you get. Treat your bedroom to these gracious pieces of beautifully finished, heirloom quality maple.



NOW! AT WEISFIELD'S '888' 8 TRANSISTOR

Emerson PORTABLE POCKET RADIO

WORLD'S FIRST 8-TRANSISTOR POCKET RADIO AT THIS LOW PRICE 48.00



HI-FI TONE... PLAYS WHERE OTHERS FAIL!

- Costs LESS Than 5-Transistor Radios!
- Instant "Warm Up"—No Waiting!

Take it out to the ball games... it's so compact you won't even know it's along... yet so packed with power it actually plays where other radios fail to receive! Guaranteed "Neverbreak" case 4" wide, 6 1/2" high, 1 1/2" deep, with handsome gold-finish speaker. See it today!

PAY ONLY \$1 A WEEK

WEISFIELD'S THE WEST'S LARGEST CREDIT Jewelers

122 E. Main St. — Medford — Phone SP 3-5348
Store Hours: 9:30 a.m. to 5:30 p.m. — Open Mondays 'til 9 p.m.

Stop in our Maple department and browse. Take your time and really observe the quality of all our maple furniture. We take pride in handling the very finest lines available... make your holiday plans now to enhance the beauty of your home with Maple.

PHONE MU 5-8771

HERNDOBLER'S fine furniture

125 EAST MAIN ST. MEDFORD, OREGON