

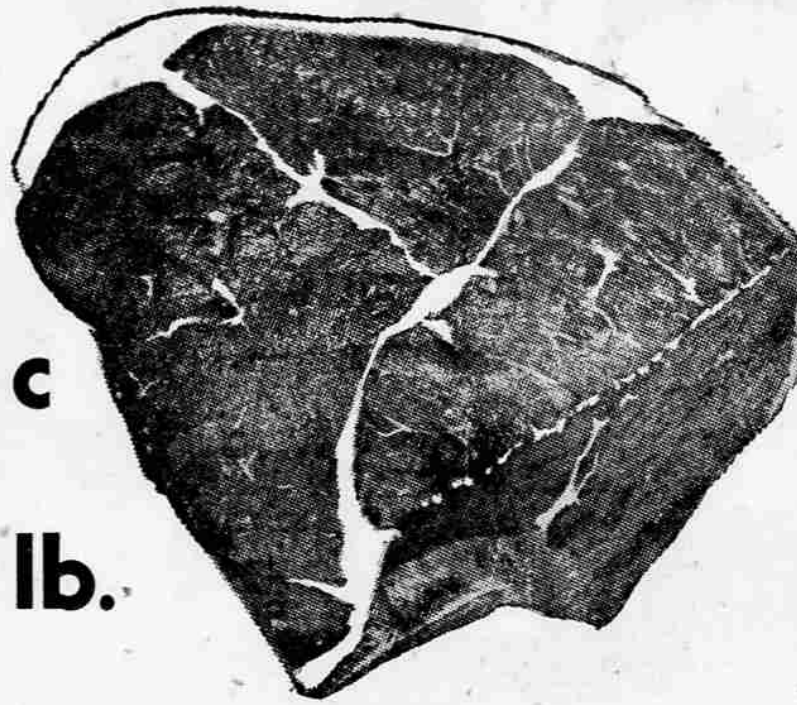
IF YOU'RE NOT SHOPPING AT THE GROCETERIA YOU'RE PAYING TOO MUCH

U.S. Graded Choice Steer

Aged to Perfection

RUMP ROAST **87^c** lb.

Boned and Rolled
No Waste to Buy



Young, Tender, Fresh Cut, Lean Meaty

SPARE RIBS **49^c** lb

Armour's Star Brand. Sealed Cello Wrapped. Enough to serve 4 persons.

DRIED BEEF **29^c** pkg.

Swift Premium Brand. Sealed Cello Wrapped

SKINLESS FRANKS **47^c** lb

Swift Premium Brand. Fresh Pack. New Type Skinless

LINK SAUSAGE **53^c** lb

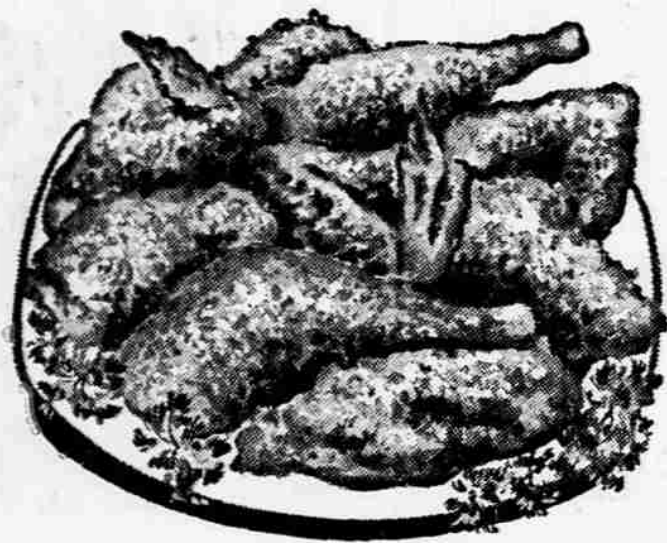
U. S. Graded Choice Steer. Cut short—waste removed.

PRIME RIB ROAST **79^c** lb

Lean—Tender—Rib Cut

PORK CHOPS **69^c** lb

Whole Pork Loins
Cut in Chops 49c lb.



FRYING CHICKEN

Extra-Fancy . . . Large Meaty Type
REPEAT SPECIAL — SORRY WE RAN OUT LAST WEEK

CUT UP PAN READY—39^c lb.

37^c lb.

Meat Prices in this Ad Good Through Saturday, Oct. 12, 1957

● Groceteria Fresh Produce Helps You Live Better For Less ●

FANCY PACK

Celery Hearts

Keep a pack handy for salads, cooking, snacks. It is tender and sweet.

19^c Pkg.

FANCY GRADE

Newtown and/or Ortley Apples

5

Pound Plio Bag

39^c

Enjoy Home Made Apple Pie or Sauce. Made from this fine fruit.

PACKAGE CARROTS

Top Quality. Brittle tender. Good any way you serve 'em. Package 1-lb. or over

10^c Pkg.

EXTRA FANCY YAKIMA

Double Red DELICIOUS

2 lbs. 29^c

The Pinnacle of Apple Eating Pleasure

Sweet Bell PEPPERS

Try Stuffed Peppers For Dinner Tonite

2 Pounds 25^c

BRUSSEL SPROUTS

Adds Variety To Your Meals

2 Pounds 25^c

FOR THOSE COOKIES AND CAKES WE HAVE
New Crop CALIFORNIA DATES **2 -LB. 59^c** PACK

WALNUTS **39^c** Pound
ROASTED PEANUTS **39^c** Pound

At Least Six Deaths Blamed on Asian Flu As Disease Continues

By UNITED PRESS
Health officials today determined the exact cause of death. The disease continued to rage through the South. Louisiana health authorities reported 300,000 flu cases since July 14 and a total of 51 deaths blamed on influenza and complications. But the outbreak there was believed to be on the decline.
An Asian flu outbreak in Kentucky hit an estimated 1,000 persons and forced the closing of all schools in Trigg county on the Tennessee state line.
Other Schools Hit
Other flu outbreaks struck football teams at Moravian, Lafayette, Montclair, N.J., State Teachers College and Rutgers University. The Lafayette-Delaware and Moravian-Juanita football games this week end were cancelled.
Flu also hit a number of collegiate football camps, including the University of Notre Dame at South Bend, Ind., where three first stringers and a reserve were sidelined and four other players were restricted to light workouts in preparation for the Army game Saturday.
Other flu outbreaks struck football teams at Moravian, Lafayette, Montclair, N.J., State Teachers College and Rutgers University. The Lafayette-Delaware and Moravian-Juanita football games this week end were cancelled.

Ralph Weise New District Ranger at Butte Falls Post

Ralph Weise, district ranger Summit district, Mt. Hood National forest, has been promoted and transferred to the Butte Falls district, Rogue River National forest, effective Oct. 20, according to Lloyd R. Olson and Carroll E. Brown, supervisors respectively for the Mt. Hood and Rogue River National forests.
Weise has been district ranger on the Summit district, which includes the Timberline area, since April, 1953. His first employment with the forest service was as a fire prevention guard on the Summit district in 1946 and 1947.
He graduated from Oregon State college in 1948 with a degree in forest management. He received his permanent appointment on the Clackamas River district, Mt. Hood forest, in 1948. The next year he was transferred to the Glacier district of the Mt. Baker National forest, where he served as a recreation guard and district assistant.
Promoted, Transferred
In 1952 he was promoted again and transferred to the Mt. Adams ranger district of the Gifford Pinchot National forest as assistant ranger, where he served until he was promoted to district ranger on the Summit district in April, 1953.
Weise received avalanche training at Alta, Utah, in 1950. He was in the armed services from 1941 to 1945, serving in the ski troops. He also was a member of the Air Force, performing dog team rescue work in northern Canada and Labrador.
Weise replaces Britt Ash on the Butte Falls district, who left Aug. 26 for Ketchikan, Alaska, Brown said.
Weise is a member of the Society of American Foresters, the Wyeast climbers, the National Ski patrol and the Mt. Hood Lions club. He is also an active radio ham.
Ralph, his wife Eleanor, and two children, Ralph Jr. and Pamela, expect to report at Butte Falls about Oct. 21.

Washington — President Eisenhower personally apologized to Finance Minister K. A. Gbedemah of Ghana today for the refusal of a Dover, Del., restaurant to serve him Monday because he is a Negro.
The incident prompted Eisenhower to have Gbedemah come to the White House for breakfast with him this morning. Vice President Richard M. Nixon, who visited Gbedemah's home during his tour of Ghana last March, also was present at the breakfast.
Gbedemah later told reporters that Eisenhower expressed an apology for the restaurant incident.
"He (Eisenhower) was a little worried that it happened," Gbedemah said. "But to think that he invited me to breakfast made up for all that I went through the other day."

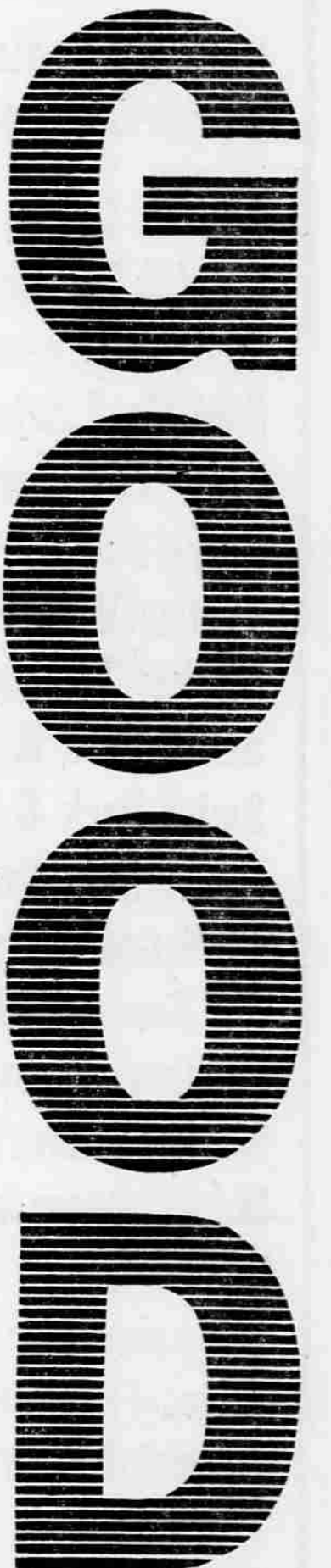
Jet Trainer Crash Fatal To Two Men

Silver City, Iowa — Two Air Force officers on a training mission from Laughlin Air Force Base, Del Rio, Tex., were killed Wednesday night when their T33 jet trainer crashed in flames near here.
Officers at Offutt AFB, Omaha, Neb., identified the dead as Capt. Leslie L. Lundberg, 36, San Bernardino, Calif., the pilot, and Maj. Dan E. Baker, 40, Wenatchee, Wash. Both men were married. Lundberg had two children and Baker a daughter. They had been living at Del Rio.
The burning wreckage was spotted by Bill Berry, Crescent, Iowa, who was piloting a private plane to nearby Omaha. He circled the scene until highway patrolmen arrived at the wreckage.
Officials at Offutt AFB at Omaha said the jet was attempting an instrument landing when it went down.

Membership Meeting Of Safety Council Set
The October membership meeting of the Medford Safety Council will be held Friday, Oct. 11, at noon in the Jackson hotel.
A budget report and appointment of a nominating committee for the annual election of officers will be conducted by Council President Aubrey Loper. Committee reports on special safety projects will be given.
EX-CHAIRMAN DIES
Bayport, N.Y. — Julius Liebmann, 89, former president and board chairman of Liebmann Breweries, Inc., died Tuesday.

Ballot Title Approved For Portland Election

Portland — The city council Wednesday approved a ballot title for a proposal to change the government here to a city manager plan, clearing the way for an initiative campaign to put the issue before voters next May.
A total of 27,807 valid signatures is needed by Feb. 24 to put the issue on the ballot.
REDS EXPLORE ANTARCTIC
London — Twenty-seven Russians are headed into the snow-covered Antarctic to set up a 1,000-mile expedition to waste on a scientific base near the South Magnetic Pole, Moscow Radio said today.



... so good it's remarkable



Early Times is so good that Kentuckians themselves overwhelmingly choose it over all other straight whiskies. Try Early Times yourself today.

KENTUCKY STRAIGHT BOURBON WHISKY
EARLY TIMES DISTILLERY COMPANY,
LOUISVILLE 1, KENTUCKY • 86 PROOF.

Actually YOUR BAKING DEPENDS ON THIS

It's the BALANCE of ingredients in baking powder that governs its leavening action. Only when these are scientifically balanced can you be sure of uniform action in the rising bowl plus that final, balanced rise to light and fluffy texture in the oven.
Guaranteed by Good Housekeeping
CLABBER GIRL
NOW EXCLUSIVELY KNOWN AS THE BAKING POWDER WITH THE BALANCED DOUBLE ACTION