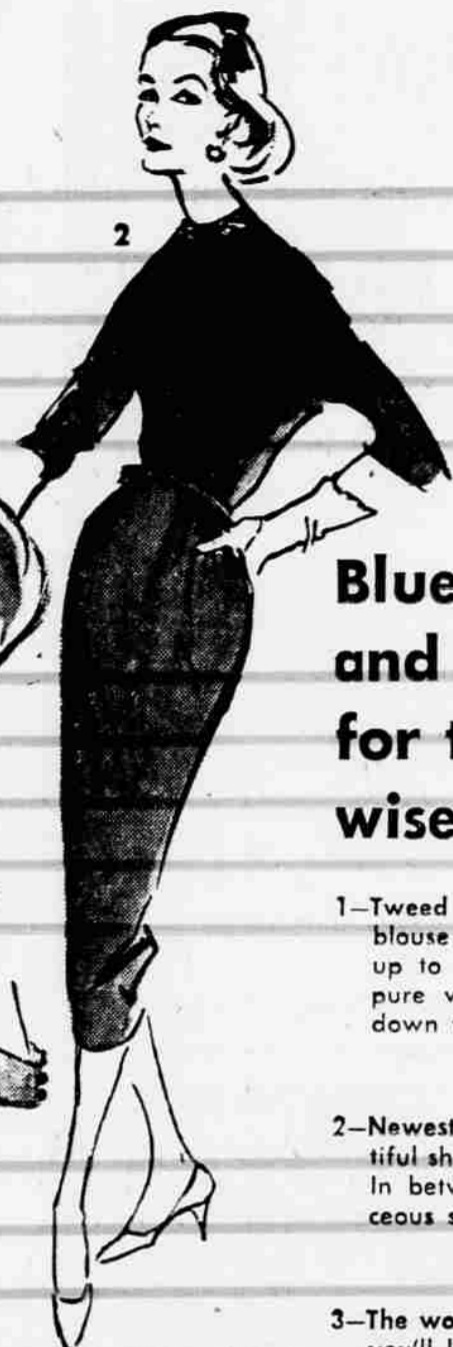


BUY, BUY, BLUES BUY, BUY, BLUES

Fall fashion calls the tune
Blue in all the keys from
Navy in the bass to
Powder in the treble



**Blues in R&K
and Puritan
for the fashion
wise women . . .**

1—Tweed a la mode . . . The mode being the overblouse look. R&K designs it in two parts that add up to a chic town dress. Beautifully tailored of pure wool tweed, the overblouse curves gently down to meet a narrowing skirt. **25.00**

2—Newest news, the crepe dress. R&K gives it beautiful shape from jewel neckline to narrow hemline. In between, a tuck-molded bodice and a curvaceous skirt. In Sapphire Blue. **25.00**

3—The wonderful side-wrap. Our new R&K is a dress you'll live in. Tailored with great shape; its lined skirt, a deep, side wrapping affair that walks with ease yet stands so slim. Sizes 10-18. **25.00**

4—The wonderful two piece theater suit, of Martin's crush resistant velvet. With the tapered easy line, of the season's newest styles. A compliment to the wearer. In Sapphire Blue. Sizes, reg. 12-20; half 12½-22½. **17.98**

**Men on the
way up are wear-
ing Blues this
season . . .
From Michaels-Stern**

1—Here's the one suit a smart man is never without. When one wears out he immediately supplements his wardrobe with another. Why? Because, New Yorker Flannels take you so many places, so nicely! This softly finished, richly textured fabric is ideal for town or country wear in the new shades of blue. **67.50**

2—For your day at the office and your night-on-the-town a Courier Cloth suit is equally correct. Its clean and classic styling gives you the confidence that comes from being properly attired. **69.50**



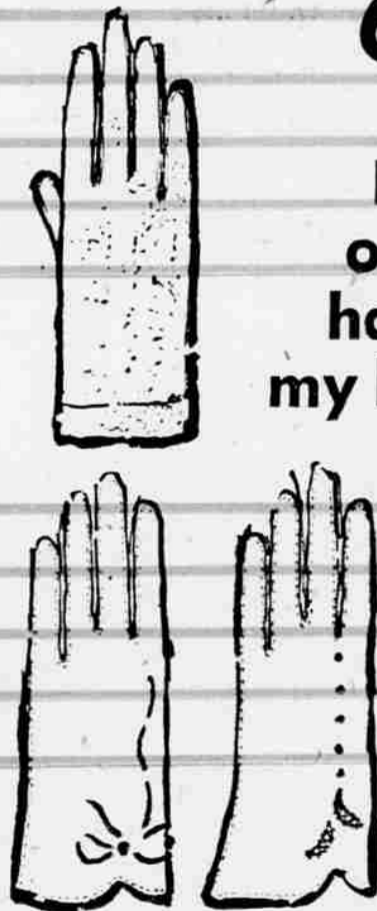
**BEAUTIFUL
BLUE
under it all . . .**

The beautiful blue slips of taffeta with lace trim and cut-away hems. The fashion wise dress color all the way from head to toe under and outer.

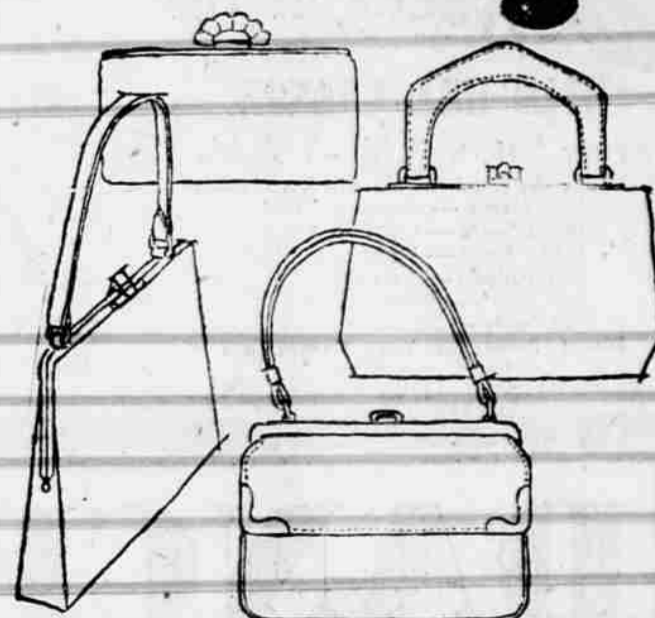
at 3.00



**BLUE
on the
hand of
my lady . . .**



Hand stitched of wonderful washable fabrics. The finishing touches for your new blue wardrobe. In 4½ to 6 button lengths. **1.98 to 3.75**



**NAVY BLUE
in handbags**

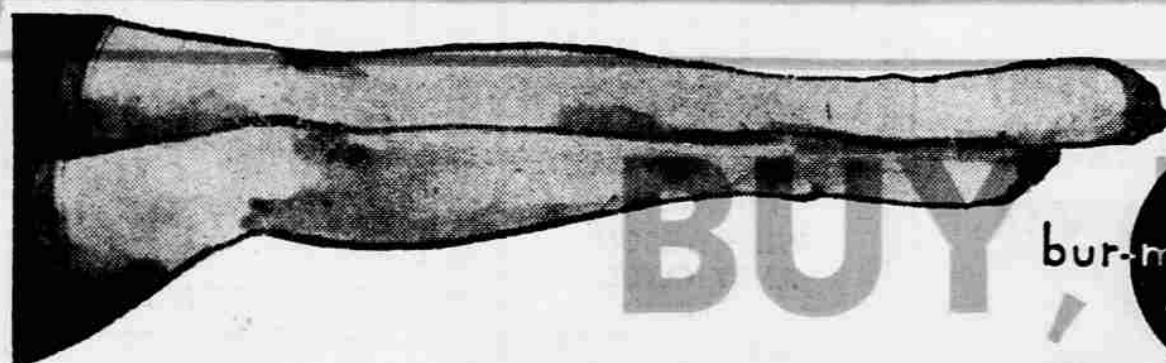
Your handbag holds your valuables, and it holds the attention of your audience as well. The smooth luxury of leather or plastic's practical stylishness, are a distinct asset to any wardrobe

2.98 - 22.98

**BLUE SMOKE . . .
nylon hosiery**

By Cameo, a shade to wear with your blue costumes or if you prefer gray. In sheers, seamless and stretch with seams.

1.35 - 1.65



bur-mil **Cameo**

**BLUE for the
fashion wise feet**

In blue suede or leather, styled in the taste of fashion. Medium or high heels. One of the important colors of the season blue!

9.98 to 15.98



BUY, BUY, BLUES

Marr's
MEDFORD