



SUMMER STUDENTS—Five students who graduated from Southern Oregon college in June are attending summer session at Mexico City college, Mexico. Left to right are Dick Simonson, Medford; Mr. and Mrs. Robert Casebeer, Riddle; and Mr. and Mrs. James Kennett, Bandon. Simonson is employed in the circulation department of the Medford Mail Tribune. The five will return home later this month.

Legend Does Not Explain Why Cepheus Placed in Sky

By **FAY BENTLEY**
 "There are exceptions to every rule," people often say and this seems to hold true in mythology as well as in real life situations. When Jupiter, king of the gods, placed a character in the heavens it was usually to honor some outstanding performance. But King Cepheus, ruler of the kingdom of Ethiopia, seems to be "the exception that proves the rule."

Just why he was honored by being given a place in the starry skies, legend does not explain. In stories he is depicted as a good king, but no deeds of heroism are attributed to his name. His claim to renown rests upon the foolish action of his wife, Cassiopeia, who by vain boasting placed the entire country of Ethiopia in danger of destruction.

The constellation, Cepheus the King, has been known from an early period in spite of the fact that it is a group of rather dim stars. It has been mentioned in the most ancient records of the Babylonians and Egyptians.

Identify Constellations
 Some religious groups, who like to identify the constellations with incidents and characters from the Bible, see in Cepheus a representation of King Solomon. To the Chinese it was The Loner Throne of the Five Emperors. The Egyptians often pictured Cepheus as Cheops, who built the Great Pyramid.

Cepheus can claim the distinction of being nearer to Polaris or the North Star than any other constellation except of course the Little Dipper of which Polaris is a part. Also, being so close (apparently) to the North Star it never sets but constantly encircles Polaris and is visible on any clear night throughout the year.

Other circum-polar star groups, in addition to the Little Dipper and Cepheus, are the

Great Bear of which the Big Dipper is a part, Cassiopeia's Chair, and Draco the Dragon. These constellations are located in the northern heavens and, to observers in the northern hemisphere, appear to move in a huge circle from east to west around the North Star as the earth turns on its axis from west to east. The North Star seems to stand still.

Cycle Repeated
 Constellations not so far north as these circum-polar groups rise in the east, travel across the heavens for approximately six months and finally disappear beneath the western horizon. After six more months the cycle is repeated.

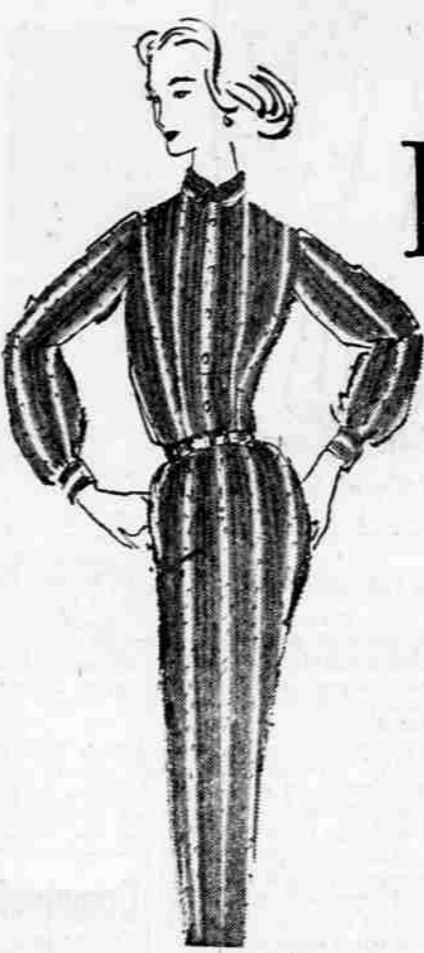
Auriga and Perseus are two star groups that are too far south of the North Star to be visible during the entire year, but still far enough north to be above the horizon more than six months out of 12.

Cepheus the King is a rather dim constellation composed of five stars. It is shaped somewhat like a kite but to most people it seems to resemble a church steeple. Four stars are so placed as to form a rectangle and the fifth star completes the likeness to a steeple.

To find Cepheus, begin with the Pointers or the two stars in the Big Dipper opposite the handle. Trace a line from the upper Pointer to the upper Pointer and extend this imaginary line to the North Star. Continue this straight line beyond Polaris for about half the distance from the Pointers to the North Star and you will reach the star which forms the point of the "church steeple."

By 9 p.m. Cepheus will be very high in the northeastern sky with the point of the "steeple" downward. This is an excellent time to locate this star picture, but it may be found any time of the year on any clear night by tracing an imaginary line from the Pointers to Polaris and then on to the point of the "steeple."

EVERYTHING FOR BACK-TO-SCHOOL



L'Aiglon

from **Mann's** MEDFORD

"... this year I'm going to make the honor role and the best dressed list..." in my L'Aiglon from Mann's.

L'Aiglon presents for your school and date wear the shirt dresses with the straight and narrow look. Above, cotton shagbank stripes with buttoned-down collars, leather contour belt. In green, brown, and blue. Misses sizes. Lower, Cotton plaid with cuffed three quarter sleeves. Brown, blue, and grey. In misses sizes.

17⁹⁵



Remember We're Open From 9:30 a.m. Until 9:00 p.m. on Mondays

Don't Miss . . . **SHAKESPEARE** Nightly throughout Aug. in Ashland. Phone MU 9-5111

that grabb girl on the campus



California tailored by Graff. Wonderful for your campus wear. In rayon linen that's washable, color fast and crease resistant too. Action back pleats. In luscious colors. Sizes 32-40 **3⁹⁸**

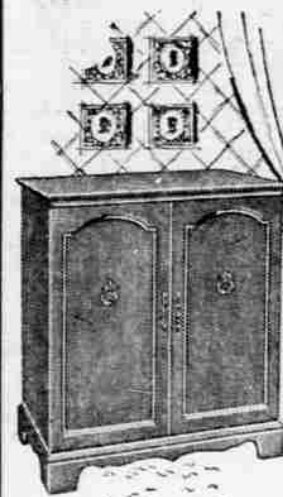
new ball hats

In lush velours. Two from our lavish variety of velour in young-head clinging shapes. Have yours in raven black or in vibrant woodland colors.



Velours **10⁹⁵ & 16⁹⁵**

Magnificent High Fidelity in fine furniture



Excitingly New—the High Fidelity LOOK as well as Magnificent Magnavox High Fidelity Sound. . . Functional furniture that eliminates all the old inconveniences of lids and drawers PLUS a faithfulness of sound such as you've never heard before.

PURUCKER PIANO HOUSE
 "Southern Oregon's High Fidelity Center"
 111 No. Central Ph. SP 2-5702

Youth Kills Mother's 45-Year-Old Friend

Santa Monica, Calif. —A 19-year-old youth has confessed to shooting to death his mother's sweetheart, a 45-year-old advertising executive, as the victim slept in a beach motel.

Charles L. Guy, son of Mrs. Nina James Angus, 37, confessed to the shooting Friday. His mother, who identified herself as a one-time Dunn, N.C., attorney and was booked in the murder, was released.

The youth told police he shot Guy F. Roberts, representative of the Morrell company, with a shotgun early Thursday morning.

Mrs. Angus said she had been living with Roberts and they planned to be married. The son resided with William Miles, 49, cocktail bar pianist with whom Mrs. Angus had lived for several years before moving in with Roberts about a month ago.

WITNESSES ARRESTED
 San Juan —The Dominican Republic has arrested five more members of the Jehovah's Witnesses religious sect, bringing to 50 the number being held at Salcedo Fortress in Ciudad Trujillo, Roy Brandt of Beatrice, Neb., a leader of the sect, said today. Brandt, who was one of 10 American missionaries deported to Puerto Rico from the Dominican Republic last week, said the new prisoners included one woman.

LUGGAGE

ESPECIALLY

SELECTED

FOR BACK-TO-SCHOOL

RELIABLE LUGGAGE

Train Case reg. 17.50
 21" Weekender reg. 17.50
 26" Pullman reg. 25.00
 Wardrobe reg. 25.00
 in grey and blue.

11⁹⁹

17⁹⁹

POSTER BROS.

2 Suits reg. 20.00 . . . **15⁹⁹**
 Companion reg. 17.50 . . . **13⁹⁹**
 in ginger and sun-tan.



Use Our Convenient Layaway



• see page 16 for Jantzen 1/3 off SALE

Mann's MEDFORD

JIM'S MEATS 838 West McAndrews Phone SP 3-1666

ALL MEATS ARE INSPECTED

TOP QUALITY LOCKER MEATS

CHOICE BEEF — Cut and Double Wrapped

Half or Whole BEEF	41¢ lb.	Front QUARTER	37¢ lb.
Hind QUARTER	51¢ lb.	Family Budget ORDER, 24 lbs.	\$10.00