

Man Devises Accurate Method To Catch Thief

San Antonio, Tex.—There are more ways than one to skin a cat, as pointed out by Carlos Rosales, chief of the Bexar district attorney's office complaint section.

Rosales tells of a Mexican laborer who came to him to report the theft of \$70. The man said he left his wallet in the rest room of the camp where some 15 families live.

When he discovered he had forgotten it, the man said he went back but the wallet, containing \$70 was gone.

Rosales told him it would be virtually impossible to find the wallet among the 15 families.

The complainant told Rosales, "I tell police. Maybe I do something about it myself." He left.

Rosales said the man wrote

a note and placed it in the rest room where he lost his purse. It read:

"I know you stole my money. It was worth it. I've been dating your wife."

He waited patiently, and within four hours his wife called, "Come quick, Juan is beating up Maria."

The complainant gathered with the rest of his neighbors and watched Juan beat up his wife.

Finally, Rosales says, Juan looked up at the complainant and said "You're the — who's been dating my wife."

"And you're the — who stole my \$70," the man retorted.

Rosales says, "Sure enough, he was the man. Juan had the note in his pocket, and agreed to repay the money if the complainant wouldn't file charges against him."

4 BIG FREE PARKING LOTS IN BACK OF STORE **GROCETERIA** SIXTH AND GRAPE STREETS OPEN 7 DAYS A WEEK UNTIL 9 P.M.

FOOD SAVINGS are in the bag!

If You're Not Trading At The Groceteria You're Paying Too Much!

DUNCAN HINES CAKE MIX COMBINATION PACK

1 Package Devils Food
1 Package Yellow
or
1 Package Devils Food
1 Package White

49^c

Regular 66c Value



OUT OF THE WOODS

Piney "Historyland..."

Last summer a picture postcard came from S. H. Holbrook that showed pine woods, four mighty Clydesdale logging horses and a towering sleigh-load of whitepine logs. It was a summer scene, with no ice. The logs, in fact, were a prize showpiece of "Historyland," at Hayward, Wisconsin.

Last March a logger and gentleman of the old school, Mr. S. Miller of LaConner, Wash., favored me with copies of the Sawyer County Historical Review, published at Hayward. They were issues of March, 1954, and March, 1955. The first one featured a picture and description of "the largest load of logs ever hauled out."

The publication set off a Great Debate that spread over the Lake States and at last became a running flight, open to all

comers, in the Detroit News. Pictures of old-time sleigh-loads of logs were sent in from far and near. All included handsome horses and whiskered men.

144 Tons...

Old Pinetop Tom Nester submitted a photograph of a load of logs harvested in his family's Michigan holdings of 1893. Even in a newspaper photograph these logs appear as the pick of a crop, like the load of white pine clears that became the sensation of the Columbia Exposition at Chicago in the same year.

The logs on the Nester sled averaged 18 feet in length and were piled 33 feet and three inches from the iced road. They looked to be on bunks 12 feet wide—the Michigan standard. Weight was 144 tons. Two horses were hooked to the sleigh. The load scaled 36,055 board feet.

Logs from the Nester forests in 1893 were sleighed to the Ontonagon River and then rafted to a railroad landing. Loaded on flatcars, they were wheeled to Chicago, where they were converted into timbers and lumber for use in the construction of the World's Fair.

"Lee's Load..."

Lee Hammond was the Wisconsin champion pinetop logger whose biggest sleigh was photographed in 1909. A print was entered in the Detroit News debate by R. W. Reiser, who declared that the Hammond sleigh, with four powerful horses hooked up, was from the pine woods of Sawyer County, Wisconsin—now home of "Historyland."

An inset photograph of the face of Lee Hammond gave me to cogitate. There, surely, was a logger of the old school, one who would have been much respected by Jigger Jones. A truly splendid feature of the strong but kindly countenance of Hammond is a mustache of the most effulgent walrus design. It cascades down from jaw line to chin level, then sweeps backward in two surging streams, upward and on, each in a big bend.

The news story tells that Lee Hammond logged 40,000,000 feet at Lost Lake, Wisconsin, in the winter of 1894-1895, and that history records no larger footage for one winter's logging by a one-man outfit.

Maybe we should get a loggers' "Historyland" started in these parts. Let's inquire around about it. Hmm?

Governors, Federal Officials Suggest States' Program

Hersey, Pa.—A group of governors and federal officials tentatively recommended on Saturday that the states take over all or parts of five programs now handled by the federal government.

This was the first concrete result of a study suggested by President Eisenhower on how to return to the states some of the vast powers now exercised by Washington.

The group tentatively agreed that the president's idea should first be tried in the fields of vocational education, disaster relief, the school lunch program, water pollution, and supplemental old age assistance programs.

Abandoning Taxes

In return for the states taking on all or parts of these jobs, the group said, the federal government should consider abandoning to the states a number of excise taxes and allowing the states to take a greater share of gift and inheritance tax collections.

The purpose would be to give the states additional revenue with which to finance their new burdens.

The excise taxes which the federal government might surrender would include those on local telephone calls, theater admissions, cabarets, club dues, coin-operated amusement devices, safety deposit boxes, and bowling alleys.

The group, which has been studying the problem of federal-state relations for the past two days, consists of six governors representing the National Governor's conference and a committee named by Eisenhower. Secretary of the Treasury Robert B. Anderson spoke for the group in announcing its "areas of agreement" at a news conference.

Memoranda Designed

Anderson said the staff of the joint state-federal committee was instructed to draw up memoranda designed to implement the tentative agreement. These staff papers will be discussed at the next meeting, not yet set.

Anderson said the six governors who attended also took a position against federal aid for school construction, except for that now provided for impacted areas.

Most of the governors expressed the feeling the federal government should not engage in school construction programs, and we on the federal side have agreed that we who are on the committee and our colleagues in the administration would develop a position which we would discuss later," Anderson said.

AGA VISITS FOLLOWERS

Karachi, Pakistan.—The new Aga Khan left here Friday night for Bombay, India, after a six-day visit with his Ismaili followers here and in East Pakistan. The young prince told the Moslem sect it should lay great stress on the industrialization of the Communist-infested East Pakistan.

comers, in the Detroit News. Pictures of old-time sleigh-loads of logs were sent in from far and near. All included handsome horses and whiskered men.

144 Tons...

Old Pinetop Tom Nester submitted a photograph of a load of logs harvested in his family's Michigan holdings of 1893. Even in a newspaper photograph these logs appear as the pick of a crop, like the load of white pine clears that became the sensation of the Columbia Exposition at Chicago in the same year.

The logs on the Nester sled averaged 18 feet in length and were piled 33 feet and three inches from the iced road. They looked to be on bunks 12 feet wide—the Michigan standard. Weight was 144 tons. Two horses were hooked to the sleigh. The load scaled 36,055 board feet.

Logs from the Nester forests in 1893 were sleighed to the Ontonagon River and then rafted to a railroad landing. Loaded on flatcars, they were wheeled to Chicago, where they were converted into timbers and lumber for use in the construction of the World's Fair.

"Lee's Load..."

Lee Hammond was the Wisconsin champion pinetop logger whose biggest sleigh was photographed in 1909. A print was entered in the Detroit News debate by R. W. Reiser, who declared that the Hammond sleigh, with four powerful horses hooked up, was from the pine woods of Sawyer County, Wisconsin—now home of "Historyland."

An inset photograph of the face of Lee Hammond gave me to cogitate. There, surely, was a logger of the old school, one who would have been much respected by Jigger Jones. A truly splendid feature of the strong but kindly countenance of Hammond is a mustache of the most effulgent walrus design. It cascades down from jaw line to chin level, then sweeps backward in two surging streams, upward and on, each in a big bend.

The news story tells that Lee Hammond logged 40,000,000 feet at Lost Lake, Wisconsin, in the winter of 1894-1895, and that history records no larger footage for one winter's logging by a one-man outfit.

Maybe we should get a loggers' "Historyland" started in these parts. Let's inquire around about it. Hmm?

Washington.—The public health service announced Saturday plans for a nation-wide battle against an expected fall and winter Asian flu epidemic.

Starting next month, it will call on Americans in populous areas to roll up their sleeves and take the new Asian flu vaccine.

At the same time it will help set up emergency medical plans for dealing with mass outbreaks which could stall the business life and essential services of whole communities.

Six private drug firms have started producing the newly developed vaccine. By mid-September, when "flu weather" begins in some northern U.S. areas, about eight million one-cc doses will be ready. The military services already have contracted for half of these.

Louis Mayer Admitted To Stanford Hospital

San Francisco.—Doctors disclosed Saturday movie magnate Louis B. Mayer was hospitalized here for treatment of anemia, but his condition was not serious.

Dr. Arthur L. Bloomfield said the 72-year-old Mayer checked into Stanford University hospital last Tuesday, complaining of a "tired feeling." Tests disclosed he was suffering from anemia—a deficiency of red corpuscles in the blood—and he received two blood transfusions.

Bloomfield said Mayer was feeling "very well" and would be released from the hospital "within a week."

MAXWELL HOUSE INSTANT

COFFEE

BLUE PLATE BROKEN

SHRIMP

For Easy To Fix Shrimp Salad

BONFIRE BRAND

SALMON

For Salmon Loaf or Salads

DEL MONTE

PEACHES

EARLY CALIFORNIA

STUFFED OLIVES

Regular \$1 29
6-Ounce Jar \$1 43 Size

Buffet Size Can 39^c

One Pound Can 49^c

Big 2 1/2 Size Can Halves or Slices 29^c

5-Ounce Glass 49^c

Time To Can Peaches Now

Complete Assortment of Fruit Jars and Freezing Supplies

Groceteria Home Purity Bakery Suggestions

SWEET ROLLS

For a tasty breakfast
YOUR CHOICE OF 6 VARIETIES

6 For 39^c

FUDGE SQUARES or PRINCESS SQUARES

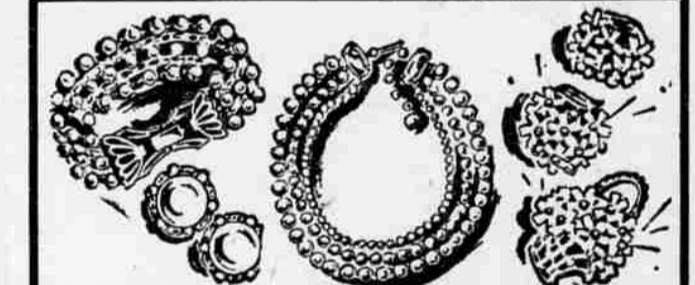
For the Lunchbox or Midmorning Snacks

6 For 29^c

EXTRA LEAN — FRESH MADE COUNTRY STYLE SAUSAGE

45^c Lb.

2 Pounds 89^c



CLOSE-OUT SUMMER COSTUME JEWELRY

Necklaces or Earrings—Regular 98¢

2 For \$1 00 Plus Tax

FRESH MADE LEAN GROUND CHUCK

65^c Lb.

2 Pounds \$1 25

for a SUNNY SMILE

Bright, clean, healthy teeth!

KOLMOYER KOLMOYER

GIANT TUBES 2 69¢

Occident FLOUR For Miracle Baking

25 lb. CLOTH BAG \$2 31

Tonite Save Time and Work for Mom

SERVE THESE I-X-L MASTERPIECES

I-X-L CHILI CON CARNE
I-X-L LASAGNE
I-X-L RAVIOLIS

Family Size — 40 ounce can

CHOICE EACH— 49^c