

Arizona Farmers Able To Repay Only Small Part of Project Cost

San Francisco — A former official of the Federal Budget Bureau testified late Tuesday in the Colorado river suit Arizona farmers could repay only one-fifth of 1 per cent of the cost of constructing the \$462,935,000 Central Arizona project.

The witness, R. L. Cochran, testified for California on the economic features of California and Arizona water projects at issue in the "states rights" fight over the valuable Colorado river water.

Arizona counsel Mark Wilmer argued against the admission of Cochran's testimony for nearly an hour, asserting that the evidence would be based on "equity" rather than law.

mer's argument with the assertion that Arizona's entire claim for a greater share of irrigation water was based on alleged need rather than on grounds of strict legal right.

Supreme Court Master Simon H. Rifkind heard arguments pro and con in Federal District Court, then ruled Cochran's testimony was admissible.

The former budget official offered a report on the Central Arizona project which outlined the construction costs and the fees farmers served by the irrigation system would pay. He said Arizona farmers would pay only \$475 per acre-foot for their

water which would barely defray operating and maintenance costs of the project.

Wilmer Unsuccessful

In his unsuccessful argument Wilmer asked that Rifkind limit testimony to that which bears directly on a legal interpretation of the Colorado River compact.

"Under the Boulder Canyon Project act, and contracts, Arizona has a definite right to certain amounts of water," he said, "and we are asking this court to quiet title to that amount."

Ely said he wanted it clarified whether Arizona was relying on strict law in its claim to Colorado river water or whether it was basing the claim on wider "rights."

Although Arizona lost the fight to exclude Cochran's testimony, earlier it stopped California's attempt to introduce into the record arguments before the Arizona legislature leading up to the 1928 ratification of the Colorado River compact.

Judge Sustains Williams Demurrer

Portland — A demurrer against an indictment returned by the Multnomah county grand jury against Brad Williams, Oregon Journal reporter, has been sustained by Presiding Circuit Judge Charles W. Redding.

However, the court gave the attorney general permission to re-submit the case.

The indictment involved charged that Williams had aided former District Attorney William M. Langley in obtaining a search warrant which led to the raid on the home of Raymond F. Clark in May of last year, in which deputy sheriffs obtained tape recordings.

Judge Redding held that the indictment was faulty in that there was no charge that Williams acted in harmony with Langley to obtain the search warrant.

Ship Machinists To Veto Contract

San Francisco — Machinists employed at Pacific Coast shipyards served notice Tuesday they will not accept the new master contract.

The contract had received the approval of most of the 10,000 Pacific Coast shipyard workers. Twelve unions had taken part in the negotiations.

It was not known immediately whether the refusal of the machinists to accept the new pact would keep it from going into effect.

Tom Temple, Portland spokesman for the shipyard machinists, said his union would not be bound by the new contract. He called a meeting in Seattle Thursday for representatives from Northwest Pacific ports to discuss further moves.

Negotiations for shipyard machinists are separate from those conducted by striking San Francisco Bay Area machinists with the California Metal Trades association.

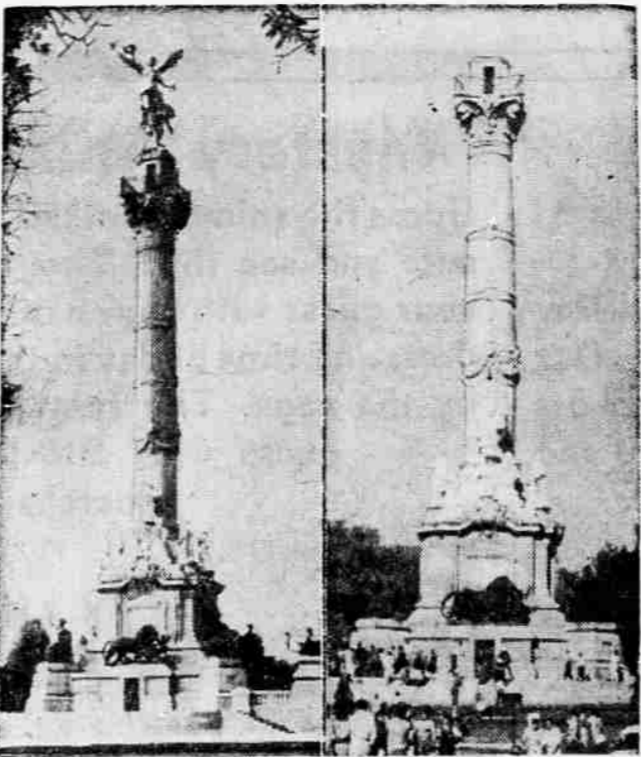
Expectant Mother Injured in Crash

White Salmon, Wash. — Mrs. Patsy Jo Vorce, 21, Bingen, Wash., an expectant mother, was injured critically Tuesday night when her car went out of control on a curve and crashed into a rock wall two miles east of Bingen.

She was brought to a local hospital suffering from head and internal injuries and a broken right leg.

Oregon state police sped three points of blood from The Dalles to Bingen from where White Salmon police took it to the hospital.

Mrs. Vorce was alone in the car.



FALLEN ANGEL—This is a view of Mexico City's famed Independence Pillar, in the Paseo de la Reforma, as it was (left) before the death-dealing earthquake which rocked the city. The tremor toppled the figure of an angel that surmounted the 90-foot-high marble column (right). Many feared the fall of the gilt and bronze figure as an omen of further ill fortune.

Most of Nation Sees No Immediate End To Cool Canadian Air

By UNITED PRESS

Shirtsleeve weather was on the way back to the plains states today, but the rest of the nation saw no signs the brisk sojourn of Canadian air was at an end.

While a warming trend developed in the central plains, a mass of cool Pacific air crept in and covered a large strip extending

Khrushchev Greeted Factory Workers On Visit To Berlin

Berlin — Communist boss Nikita Khrushchev arrived here today to begin a seven-day visit that may result in the conclusion of a separate peace perpetuating the division of conquered Germany.

The Red leader was accompanied by Deputy Premier Anastas Mikoyan, Foreign Minister Andrei Gromyko and Deputy Foreign Trade Minister I. Kuznetsov. Premier Nikolai Bulganin, who usually has accompanied Khrushchev on such jaunts in the past, stayed home.

The Red regime here marshaled government employees and factory workers by the thousand and marched them to the railroad station in formation to welcome the Russian visitors.

Waves to Workers

Hundreds of Communist troops, security agents and police were massed around the station.

Khrushchev waved and beamed at the parading workers, then planted a kiss on the cheek of Deputy Premier Walter Ulbricht, the hated Stalinist leader of Red Germany.

One of the main purposes of the Soviet visit is believed to be to bolster the unpopular Ulbricht regime, which has come under increasing attack because of its loyalty to the principles of the late Josef Stalin.

Outside the station, Khrushchev and Mikoyan patted children on the heads and slapped the backs of Communist officials. Both men were wreathed in smiles.

The ingratiating behavior of the Russians drew no cheers and only scattered applause from the German crowd.

117 SO. CENTRAL PHONE SP 2-6241

WARDS
AJNTGOMERY WARD

TONIGHT

5 to 9 Specials!

WEDNESDAY NIGHT SPECIAL!

Reg. 79c, 98c

'ASSORTED YARDAGE

SPECIAL PRICE **44c** TONIGHT ONLY

SOLID COLOR COTTONS, SILKY-SHEEN PONGEE RAYON SHANTUNG AND DACRON-RAYON LINEN.

YARDAGE DEPT.—MAIN FLOOR

WEDNESDAY NIGHT SPECIAL!

Were 1.98, 2.98

GIRLS' DRESSES SKIRTS, BLOUSES

SPECIAL PRICE **99c** TONIGHT ONLY

WIDE SELECTIONS OF STYLES, COLORS, FABRICS. WERE 9.98 TO 12.98. COATS, TOPPERS. 4.99

CHILDREN'S DEPT.—MAIN FLOOR

WEDNESDAY NIGHT SPECIAL!

Reg. 1.98, 2.98

BOYS' SPORT SHIRTS

SPECIAL PRICE **97c** TONIGHT ONLY

CHOOSE FROM SHORT OR LONG SLEEVE STYLES. MANY COLORS, PATTERNS, FABRICS. SIZES 6 TO 14.

CLOSE-OUT MEN'S SPORT SHIRTS 97c

BOYS', MEN'S CLOTHING DEPT.—MAIN FLOOR

WEDNESDAY NIGHT SPECIAL!

Reg. 18c

RUBBER TILE

SPECIAL PRICE **11c** TONIGHT ONLY

9x9 INCH SIZE. CHOICE OF MARBLIZED COLORS. LUSTROUS, SATINY FINISH—CLEANS IN A JIFFY.

FURNITURE DEPT.—SECOND FLOOR

WEDNESDAY NIGHT SPECIAL!

Reg. 43.95

HAWTHORNE BIKE

SPECIAL PRICE **35.88** TONIGHT ONLY

BOYS OR GIRLS 20-IN. AND 24-IN. MODELS, BALLOON TIRES, NEW DEPARTURE BRAKES.

SPORTING GOODS—BASEMENT

WEDNESDAY NIGHT EXTRA!

Reg. 1.00

LAUNDRY BASKET

SPECIAL PRICE **55c** TONIGHT ONLY

CONVENIENT, EASY TO CARRY ROUND SHAPE. ALL BAMBOO CONSTRUCTION. REINFORCED TOP.

HOUSEWARES—BASEMENT

High Hells Canyon Fight To Continue

Klamath Falls — The fight for a high federal dam in Hells Canyon will continue, the state AFL-CIO convention was told Tuesday.

J. T. Marr, executive secretary treasurer of the State Labor Council and president of the National Hells Canyon Association, told delegates that the issue is not dead despite its defeat by the House Interior Committee.

Marr said his association has hopes that one or two anti-Hells Canyon members of the committee would change their votes.

Idaho Power Company has federal permits for three low-head dams in the canyon.

Eisenhowers Invited To Oregon Vacation

Washington — Sen. Richard L. Neuberger (D-Ore.) said today he had invited President and Mrs. Eisenhower to spend a future vacation on the Oregon coast.

Neuberger said that inasmuch as Eisenhower had chosen Newport, R.I., for a vacation this summer "it is my strong hope that you will consider a respite from your great responsibilities somewhere on the Oregon shore while you are our president."

Neuberger said in his letter that "partisan considerations would be entirely forgotten" in a welcome by Oregonians.

The Oregon senator said the Oregon coastline "is one of the most magnificent anywhere in the world."

Adventists Announce Pastoral Changes

Gladstone, Ore. — Pastoral changes in the Oregon Conference of Seventh-day Adventists were announced today by President L. E. Biggs.

He said the Bend and Madras districts would be consolidated into one. Churches to be included in the new Bend district will be Bend, Madras, Prineville, Redmond and Sisters.

Elder Preston Smith, pastor of the Klamath Falls church, will move to the White Salmon, Wash., district. Elder R. J. Kegley Jr. will move to Klamath Falls from the Bend district.

Elder L. W. Cornforth, pastor of the Oceanlake district, will move to the Battle Ground, Wash., church and Elder Paul Gordon, previously at White Salmon, will become pastor of the Oceanlake district.

Car-Train Crash Kills Eugene Woman

Eugene — Mrs. Della Dull, 78, of Eugene, died Tuesday night as the car in which she was riding collided with a slow-moving train here. There were no marks to indicate injury and authorities said she may have died of a heart attack. They said an autopsy would be held.

H. E. Maynard of Eugene, driver of the car, told authorities that he had stopped at a stop sign about 20 feet from the crossing. He did not see the oncoming train, and drove into the center of the locomotive. His car was dragged about 90 feet.

Mrs. Dull was dead when she was examined by a doctor. She was the mother of Dr. Paul A. Dull, professor in the political science and history department of University of Oregon.

Maybe Shark Was Calling Ocean Friends

West Loos, England — Several persons in this Cornwall coastal village were unable to use the local outdoor telephone booth Tuesday.

It was occupied by a five-foot shark.

Authorities had no explanation but speculated it was left there by an absent-minded fisherman.

Pacific Northwest Natural Gas Line Merger Requested

Washington — El Paso Natural Gas Company today asked the Federal Power Commission for permission to merge the Pacific Northwest Pipeline Corp. into its system.

Pacific also filed a petition requesting the merger.

The merger would give El Paso an 8,900-mile natural gas pipeline net stretching west from Texas to California and north to the Pacific Northwest and Western Canada.

El Paso pointed out it already owns 99.8 per cent of Pacific's common stock.

In a separate application, Pacific asked for permission to hike its natural gas rates by \$5,500,000 a year to reflect higher operating costs.

Better Service

In its merger application, El Paso said combining the firms would provide better and more economical service for customers of both companies through a "single, integrated company."

It also said it needed to tap the big "proved and potential gas reserves" of Pacific in Western Canada and the Rockies to meet the "extensive demands" of California for natural gas.

It said it planned to deliver in the near future an additional 500 million cubic feet of gas per day to California. This must come largely from reserves in Western Canada and the Rocky Mountain states.

Pacific, with its 2,125-mile system, now serves New Mexico, Colorado, Utah, Wyoming, Idaho, Oregon and Washington. Its principal market is the Pacific Northwest.

El Paso's 6,700-mile system stretches from West Texas to California.

Wood Scraper 49c

Keen-edged tool that takes off paint, varnish or shellac in a jiffy. See it—TODAY!

Aluminum Ladders 8.59 to 23.40

We have aluminum step stools, single ladders, extension ladders & step ladders in a full range of sizes and prices—See them today!

Painter's Pal . . . 39c

For painting hard-to-reach check rails, around door and window frames and other narrow surfaces.

Lustré Enamel \$2.85 qt.

Flows on freely. Dries in 3 to 4 hours to a satiny surface like baked enamel. Perfect for kitchens, bathrooms, all wood work.

OFFICIAL CONFESSION — Florida convict Donald Wedler, 23, signs a 3½-page confession stating that he beat Marilyn Sheppard to death in Cleveland in July, 1954. Confession in hand, attorneys left immediately for Ohio to try to win a new trial for Dr. Samuel Sheppard, who is serving a life sentence for the slaying.

PAINT and SUPPLIES

SO EASY TO USE... SO ECONOMICAL TO BUY!

If you're planning a "Paint Up Project" for the near future... plan to visit ACME HARDWARE this week! Right now we're featuring especially-low prices on ALL of the top quality Paints, Supplies and Accessories you'll need for "professional-looking" results. These nationally-advertised products are not only easy to use and long-lasting... but they're **ECONOMICAL TO BUY**, in the bargain! So, jot down your painting needs right away... then come fill them at ACME HARDWARE today!

Genuine KEMTONE PAINT ROLLER 1.59

Can be used for oil or water base paints. Covers fast. Ideal for ceilings. Simple to operate.

PAINT BRUSHES 49¢ to 3.38

Best for rugged duty... best for trim. Nylon bristles—tapered for streak-free work. "Fibreglass" to hold more paint. Easy-to-clean. Priced as low as 49¢.

WOOD SCRAPER 49¢

Keen-edged tool that takes off paint, varnish or shellac in a jiffy. See it—TODAY!

Aluminum Ladders 8.59 to 23.40

We have aluminum step stools, single ladders, extension ladders & step ladders in a full range of sizes and prices—See them today!

PAINTER'S PAL . . . 39¢

For painting hard-to-reach check rails, around door and window frames and other narrow surfaces.

Lustré Enamel \$2.85 qt.

Flows on freely. Dries in 3 to 4 hours to a satiny surface like baked enamel. Perfect for kitchens, bathrooms, all wood work.

PAINT TRAY & ROLLER SET \$1.69

This fine set consists of a 3-qt. metal tray—with a handy clamp for ladder... and a 7-inch Dynal covered, rust-resistant roller. Even a novice can do a "professional-looking" job with this low-cost outfit!

Paint Thinner 33¢ up

Fine quality thinner and cleaner comes in 3 sizes. Thins paints, varnish, enamel. Cleans brushes, hands, etc. From 49¢ per quart!

Deluxe Wall Paint \$2.15 qt.

Even an amateur can give walls and woodwork a uniform coat of color... with this velvet-smooth paint!

OUTSIDE WHITE PAINT \$4.98 per gal.

Resists war; will last for years! Adds extra life to buildings; improves property values and looks good.

Tony Manno's ACME HARDWARE CO.

QUALITY AT LOWER PRICES

SPECIALISTS IN HOMEWARES!

Free Parking ... Free Delivery