

★ PIGGLY WIGGLY ★ PIGGLY WIGGLY ★ PIGGLY WIGGLY ★

# X-TRA VALUE WEEK!

**EXTRA SAVINGS**

**BIG TOP PEANUT BUTTER**  
12-oz. Jar **39¢**

**LARGE 2½ TIN MEDFORD PURPLE PLUMS**  
5 FOR **89¢**

CHET'S FROZEN  
**Meat Pies**  
CHICKEN — TURKEY  
BEEF  
2 For **49¢**

STARKIST CHUNK STYLE  
**TUNA**  
½ FLAT TIN  
4 For **\$1.00**

Prices Effective Friday & Saturday at Both Stores... Stewart at King... 528 S. Riverside

MINUTE MAID  
**FROZEN Lemonade**  
Pink or Regular  
12-oz. Tin  
5 FOR **\$1.00**

BCYD'S  
**Coffee**  
Regular or Drip  
1 lb. can **95¢**  
2 lb. can **1.89**

HUDSON HOUSE  
**Tomatoes**  
SOLID PACK  
Large 2½ Tin  
4 FOR **\$1.00**

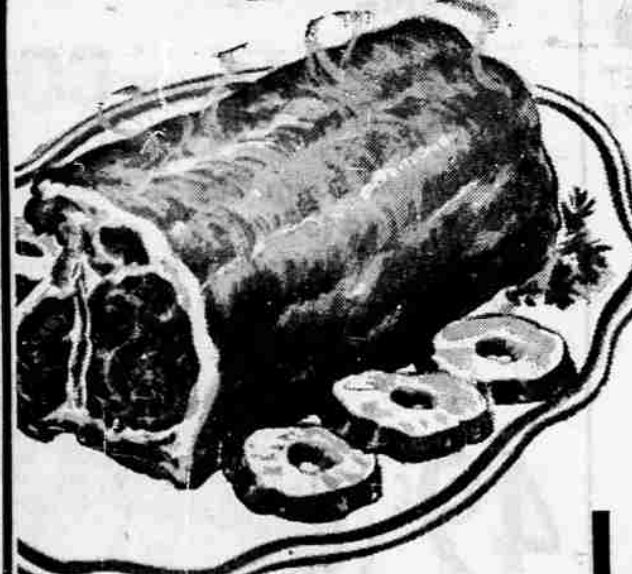
BONNIE  
**DOG FOOD**  
12 Pack Carton  
**\$1.35**

**NABISCO VANILLA WAFERS** 7¼-oz. Package **25¢**  
**NABISCO CAMEO CREME SANDWICH COOKIES** 8¼-oz. Pkg. **27¢**  
**STEINFIELD'S DILL PICKLES** 56-oz. Jar **55¢**  
**BONNEVILLE SWEET PICKLES** 22-oz. Jar **35¢**

DROMEDARY  
**CAKE MIXES**  
Devils Food  
Yellow  
Honey 'n' Spice  
White  
Pound  
4 FOR **\$1.00**

**FRESH PICKED**

**X-TRA VALUE WEEK**  
mean **EXTRA CASH Savings**  
**LOW LOW PRICES plus**  
S. & N. GREEN STAMPS



**PORK LOIN**  
WHOLE LOIN OR HALF lb. **59¢**

Loin Roast Lb. **59¢**

Country Ribs Lb. **49¢**

CENTER CUT Pork Chops Lb. **79¢**

SWIFT'S PREMIUM  
**STUFFED TURKEYS**  
12 to 14 Pounds  
No Fuss—Just Put in Oven Frozen  
**53¢** lb

**GROUND BEEF FRESH** 3 LBS **\$1.25**

**MILK FED VEAL**

- Shoulder Roast . . . lb. **49¢**
- Rib Chops . . . . . lb. **79¢**
- Loin Chops . . . . . lb. **89¢**
- Veal Round . . . . . lb. **98¢**
- Breast of Veal . . . lb. **29¢**



45 JUMBO SIZE VINE RIPE  
**CANTALOUPE**  
ea. **10¢**

Large Slicing Size Vine Ripe  
**TOMATOES**  
**15¢** lb

**TOMATOES** Small Salad Size Vine Ripe **10¢** lb

Crisp—Sweet—Long Shank  
**CELERY** 2 b u n **25¢**

LARGE SOLID HEADS  
**LETTUCE** 2 f o r **25¢**

LONG—GREEN—LOCAL  
**CUCUMBERS** Ea. **5¢**

PICKLING ONIONS — RED BELL PEPPERS — GARLIC — FRESH DILL — PLUMS — ICE COLD WATERMELON  
PEACHES — APRICOTS — LOCAL CORN — NEW YAMS — BLUEBERRIES — STRAWBERRIES

STEWART AT KING STS. • Open Every Day Until 9 p.m. • Lots of Free Parking • 528 S. RIVERSIDE