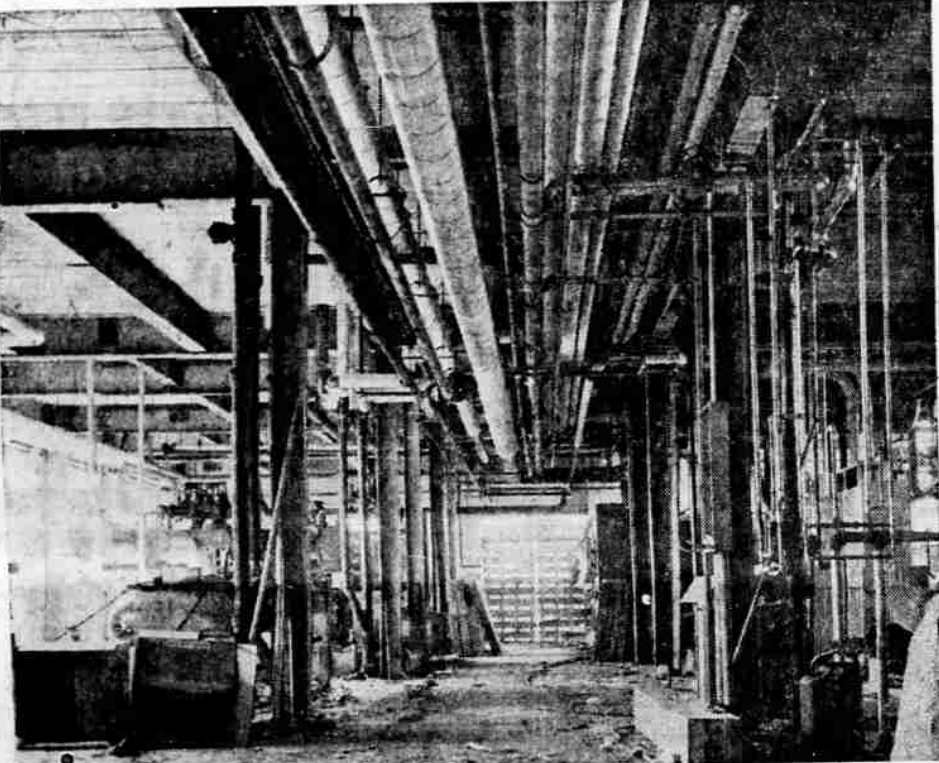


# New Hospital May Be Completed in Early Spring



**GUIDED TOUR** — W. R. McCormick (hand in hat), clerk of the works for construction at Rogue Valley Memorial hospital, conducted a tour of members of the board of directors of the Jackson County Chamber of Commerce, through the big building last week. To the left is Otto J. Frohnmayer, of the hospital board. County Judge Rodney

Keating (hands in pocket) and County Commissioner Ralph James (in business suit) were among those on the tour. McCormick is pointing out the elaborate system of air ducts which will ventilate the hospital. They are insulated with fiber-glass sheets covered with aluminum foil, bonded tightly to the ducts.



**MAZE OF PIPES** — The view above, taken in the north wing basement of the Rogue Valley Memorial hospital, which houses the bulk of the mechanical equipment, shows graphically the maze of pipes which are one reason why hospital costs are higher than for other

buildings. They carry water, steam, oxygen, air, sewage, and some of them are vacuum pipes for specialized hospital use. Boilers are at right in distance, and emergency generator at left.

## Delays Have Been Made Up, Chamber Directors Told

The \$2½ million Rogue Valley Memorial hospital, construction of which is well along, will be completed in late winter or early spring of 1938 if the present building pace can be maintained.

Directors of the Jackson County Chamber of Commerce and others interested in the hospital toured the partly-finished structure last week, and were told that delays caused originally by slow steel deliveries and other reasons, have now largely been made up. The first "target date" for completion is in January.

Conducting the tour was W. R. McCormick, Seattle, who is clerk of the works for the construction. Also along were Otto Frohnmayer, of the hospital board, Alfred S. V. Carpenter, one of the major contributors, and nearly 20 others, including the three members of the county court.

**Funds Are Donated**  
The hospital situated on a 20-acre site at Murphy rd. and Barnett rd., is being built with funds donated by local people, supplemented by federal Hill-Burton hospital construction funds, and a Ford foundation grant. When completed, it will have beds for 80 patients, as compared to the 55 beds now available at Community hospital, which it will replace.

But the 80-bed figure is an initial total. The new structure is designed to be expanded as needs increase, and the ultimate size will accommodate up to 150 beds, plus outpatients coming there for treatment.

The "core area" including the basic mechanical, service and administrative facilities, is somewhat larger than would be needed for an 80-bed structure, and was designed with the idea of ultimate expansion in mind.

**Constructed of Masonry**  
The hospital is being constructed of masonry — mostly pre-formed concrete building blocks — on a heavy steel framework.

The building is now at a mid-point in construction. Only on one floor have room partitions been installed, and on the other floors it is a maze of pipes, wires, ducts and other appurtenances which will be covered when the ceilings are installed and the partitions put up.

The tour started in the basement of the four-floor structure, with the mechanical and service departments. A half-million dollars is going into mechanical devices at the hospital, and three-fifths of them are in the basement. They include generators, boilers, heat exchangers, fans, ducts and other contrivances in an array to baffle the layman.

**Included in Basement**  
The basement includes not only the technical contrivances, but also an autopsy room, locker room, incinerator, storage space, laundry kitchen and cafeteria. It is at ground level most of the way around, and below ground level at parts of the sloping surroundings. Paved parking and service areas are planned outside, together with landscaping.

The main entrance is in the center of the gently-angled east and west wings of the three-winged building. The foyer will contain the information and telephone desk, a memorial court where the names of donors to the hospital will be displayed, and the entrance to the shop which will be operated by members of the auxiliary. Here refreshments, magazines and newspapers, gifts, candy and other items will be available.

The auxiliary also will have its own room in the same wing, where members can hold meetings and work on their projects.

The rest of the east wing on the main floor is devoted principally to administrative offices and a conference room. The west wing will include the ambulance entrance, emergency surgery and fracture rooms, and the outpatient area, including x-ray, treatment and conference rooms. One of the two elevator shafts is pierced at the rear at this level, to admit patients arriving in ambulances so they will not have to go through the foyer.

The north wing of the main floor includes a non-denominational chapel and a ministers' consulting room, directors' room, doctors' entrance room, nurses lounge and locker room and other service rooms.

**Second Floor**  
The second floor is devoted almost exclusively to rooms for patients, with both single and multiple bed capacities. In the center over the main entrance, is a solarium with a view to the Siskiyou to the south. In a pinch, it could be used as an eight-bed ward. All rooms are equipped with their own toilet and lavatory facilities, piped oxygen. TV outlets, nurses call bells, optional air conditioning outlets, as well as the usual hospital room facilities.

The top floor is devoted to surgery, obstetrics and maternity areas. There are two major surgeries, all to be finished in glazed light-green tile and all with the most modern anti-explosion devices and surgical facilities. There also will be a cystosurgery and an oral surgery.

The surgery lights, as well as other key lights and electrical devices throughout the building, will be connected with the stand-by generator, which will go on automatically within a few seconds in case of power failure.

**Maternity Facilities**  
The west wing of the top floor includes delivery rooms, labor rooms, and the nursery, while the east wing is for maternity bed patients.

On the flat roof, a "penthouse" will house the elevator machinery, as well as other equipment including ventilation and air conditioning fans.

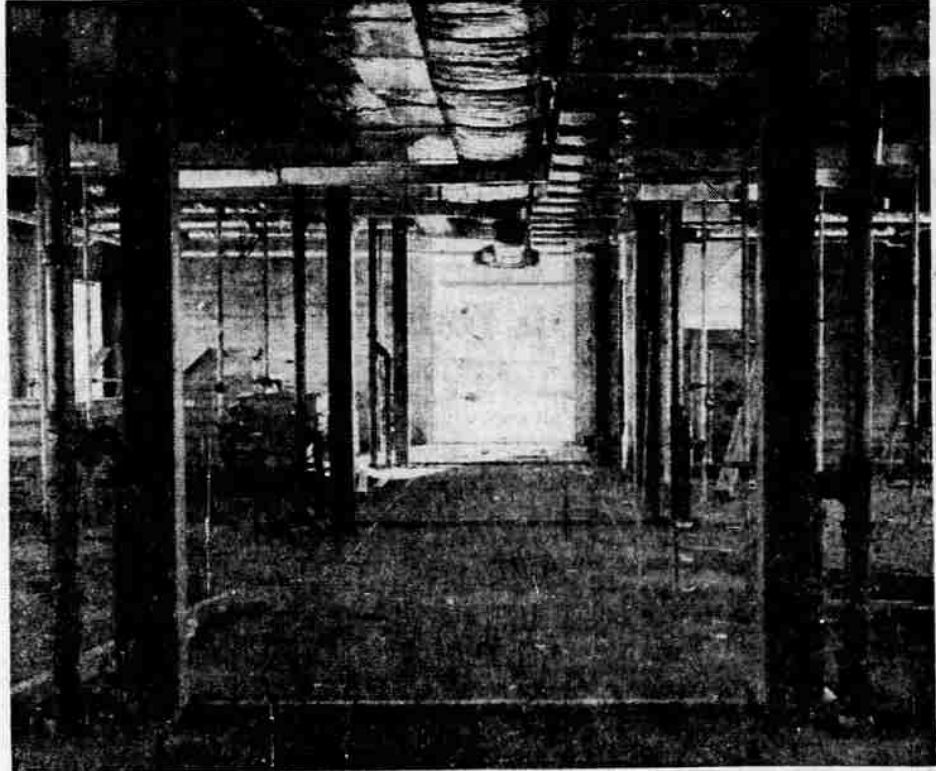
Plans for the hospital got under way several years ago, when it became evident that Community hospital could not much longer continue to meet its demands safely. A survey of hospital needs and potentialities was conducted by the chamber of commerce, and revealed both need and demand for the new structure, both from the medical profession and from the public.

**Drive for Funds**  
A drive for funds was conducted and was successful, with some 4,000 persons contributing amounts which ranged from a few dollars up to major donations of several hundreds of thousands of dollars. Rogers and Butler, New York architects, planned the building and construction started last year.

Supporters of the hospital are confident that it will be a major attraction to Medford, and will go far to make this the most important medical center between Eugene and Sacramento. Together with Sacred Heart hospital, it should be more than adequate for the short-term future, although they also foresee the day when Rogue Valley Memorial hospital will have to expand to its maximum 150-bed capacity.

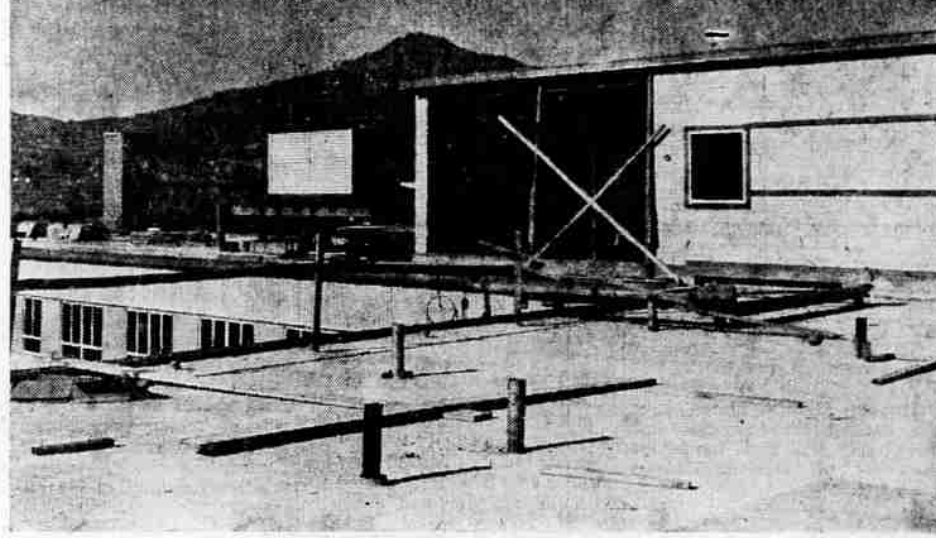
Muskegon, Mich. — Two sets of barking dogs had Muskegon police up a tree Friday. Patrolman Bernard Langlois answered a woman's complaint of a barking dog only to find two sets of howling mutts in the same area. Langlois asked the woman to make a survey to determine which dogs were loudest before seeking further action.

Luzon is the largest and richest island in the Philippines chain.



**EXPANDABLE WING** — Above is a view looking toward the end of the west wing on the third floor of the new Rogue Valley Memorial hospital, showing how the floors look at their present stage of construction. This view is down what will be the corridor. The opening at the end will be windowed in, but

in the future, if the hospital is expanded, the wing can simply be lengthened, and the big opening will provide an uninterrupted corridor. Metal window frames can be seen at the left, and air ducts above. The latter will be covered by the lowered false ceiling.



**"PENTHOUSE" VIEW** — Roxy Ann Buttle looks behind the hospital in the picture above, made from the roof. At extreme left

is a smoke vent; in the center a cooling air intake, and at right the building which will house the elevator machinery.

## Inmate Terrorizes Washington Family

Medical Lake, Wash. — An inmate of Eastern State hospital was back at the institution here Friday after escaping Thursday night and terrorizing a family for about an hour.

Spokane County sheriff's officers said Harold Tutor, a rural resident in the area, told them that a man wearing hospital clothes knocked at his door and asked for a drink of water Thursday night. Tutor said that after he and his wife questioned the man, the escapee admitted he was from the hospital but told them he would kill for his freedom.

The escapee was identified as Elwood Chase, 34, of Yakima. Tutor said he and the escapee began struggling but Chase meekly sat down after Tutor fired a shotgun at the floor near the man's feet.

Mrs. Tutor drove to the Medical Lake marshal's office to get help while her husband held Chase at gunpoint.

Hospital Superintendent Dr. G. Lee Sandritter said Chase escaped from a dinner line and was not missed until the men were returned to their ward. He was listed as "not dangerous" when his escape was reported, officials said.

## Helicopter Leased For Smokejumpers

Cave Junction — A helicopter leased from Rick Helicopters, Inc. of California is now available for smokejumping maneuvers at the Siskiyou Aerial project here.

The project trains men for use in fighting fires by parachuting them into fire areas. It is sponsored by the forest service. The helicopter will be on five-minute standby during daylight hours for transporting smokejumpers to and from fires. It will remain here until Sept. 1.

## Stocks Almost Reach Historic High Point

**By ROBERT G. SHORIAL**  
**United Press Financial Writer**  
New York — The stock market this week found out about the old saying—"So near and yet so far away."

It was a disappointing lesson. The market has been making a valiant attempt to break through the historic highs set in April 1936. On Tuesday industrial stocks came about as close as possible to achieving that goal without actually doing so.

After moving to within less than half a point of the historic peak in their average, industrial stocks ran into resistance that drove them down irregularly the rest of the week.

**Rails Lower**  
The rails had a few moments of glory during the week but finished lower on the average. So did the utilities.

At the close on Friday more than \$1,600,000,000 had been wiped from market values. Industrials finished more than 5 points below the all-time high.

At various times during the week the market attempted to mount a new assault, but each one petered out in the face of profit-taking caution. The market put on one of its best displays of strength just before the close on Friday, sharply paring the day's earlier losses.

**Men Pleased**  
However market men were pleased by the fact that at no time this week did selling become really heavy. They also noted that the decline from the near-record highs set on Tuesday was mainly of a technical nature and that the market probably will make another test of the highs soon.

The retreat in securities prices came in the face of many good business and corporate news developments. Pivotal such as General Electric and Du Pont reported record earnings. Economists generally agreed the

outlook for the fourth quarter is bright, with the steel, auto and construction industries expected to spark an advance in industrial activity.

**New Financing**  
The U. S. Treasury's announcement on Thursday of huge new financing at the highest interest rates since the deep depression days gave food for thought and heightened the cautious attitudes which marked trading this week.

Du Pont, thanks to a strong finish on Friday, closed the week with a gain of 1¾. Schering jumped 3½ in this group on stock split rumors. Allied Chemical slipped 3½ on lower earnings. Autos were actively traded but mixed. Ford rose 1½. General Motors lost ½ and Chrysler was unchanged.

American Home Products tumbled 11½ and Merck 3¼ in the pharmaceuticals. American Telephone lost 2.

## Medford Man Cited By State Police

Robert Charles Jantzer, 27, Tenth and Pine sts., Medford, was cited by state police for violation of the basic rule Friday after his vehicle went out of control, crossed the road twice and struck a parked car on the Jacksonville-Central Point Market rd.

Police said the car failed to negotiate a turn, hit the right ditch and traveled 208 feet. It went across the road into the left ditch, continued across the road and struck the rear of a car, which was parked on the right shoulder.

The parked car was registered to Raymond Walter Hurn, 46 Summit st., Medford. There were no injuries. The accident occurred at 9:05 p.m.

## Dormitory Rates May be Raised

Portland — Chancery John R. Richards of the state system of higher education said Saturday he will propose an increase of 6½ to 7 per cent in dormitory board and room rates at state schools when the board of higher education meets here Monday.

Richards said the increases would raise the charge for board from the present \$48 per month to \$51 and room rates would go up \$5 per term. Total increase in costs per year per dormitory student would be about \$39.

The proposed increases, Richards said, would be needed to offset wage boosts granted dormitory employees. Dormitories at Oregon State college, University of Oregon, Oregon College of Education, Eastern Oregon college, and Southern Oregon college are self-supporting and receive no state appropriations.

The board will also consider at its July meeting nearly \$400,000 offered in gifts and grants for the eight state campuses and general extension division.

Oregon State college would receive \$241,600 in grants, most of it for research. University of Oregon would get \$74,900 and the Medical School \$50,000.

Election of new board officers is on the Tuesday agenda.

## Pocatello Area Strike Not Settled

Pocatello, Idaho — Federal Mediator Dan Edwards said Saturday a meeting between striking carpenters and Pocatello area contractors was recessed Friday night "with nothing definite arrived at."

Edwards said the session between the Rocky Mountain Council of Carpenters and the Southeast Idaho Contractors' Association was recessed subject to call. He said he would "try" to arrange another meeting next week.

The mediator said the two groups discussed the main points of dispute between them. He listed these points as wages, health and welfare benefits, subsistence, and the duration of a new contract.

The Southwest Idaho Contractors' association represents about 60 builders in the Pocatello area. Edwards said he was trying to arrange a mediation meeting between the carpenters and the Idaho chapter of the Associated General Contractors, which represent major heavy, commercial and highway construction contractors in southern Idaho.

About 1,800 carpenters failed to report to their jobs Wednesday morning because of the contract with their employers.

## Public Accountants Elect New Officers

The Rogue valley chapter of the Oregon Association of Public Accountants elected new officers at its last meeting in Grants Pass.

Officers chosen were William L. White, Medford, chairman; Lola Reed Roney, Grants Pass, vice chairman; and Ethel McIntyre, Medford, secretary.

An Ashland chapter member, E. G. Sommer, was elected new state vice chairman of the association at the June convention in Portland.

## Remodeled Lounge Ready at Theater

A newly remodeled and redecorated lounge at the Medford Footlighters theater will greet patrons at the summer play, "Mr. Angel," according to Mrs. Lawrence Buonocone, chairman of the project.

The play opens for a five-day run Tuesday night, July 30. It is a three act comedy with a cast of 13.

The remodeling, made possible through donations of materials and labor from business concerns and individuals, is being done by volunteer work parties.

Among donors are Jack Raapke, owner of Dempster Furniture store, William Cowling, Roy Baker, Pittsburgh Paint company and members of the carpenters' local union, including Business Manager George Potucek.

Local business and professional men who have donated time and labor on the project include Dr. Paul Dix, Robert Dickey and William Duhaime, Dr. William Blackstone, Charles Champlin, and R. L. VanSickle.

Anyone interested in volunteering for the work parties may call either Mrs. Buonocone, telephone S-3133, or Mrs. Max Wimmer, telephone S-3133-25096.

## BRINGS 'EM BACK ALIVE

Chicago — A soap box may bring you a special gift if you send it to the right place. Mrs. Evelyn Kelly sent her son with a whole soap box into the backyard Friday and he returned with something special—a foot-long alligator.

## ONLY US CHICKENS

Chicago — Police rushed to investigate an excavator's report he had found a mound of bones under a building being repaired. They discovered the building used to be a butcher shop.

**Don't Say "Hello" Say - - - "FILTER-FLO"**

## Juveniles Held for Theft of Automobile

Three juveniles, ages 14 and 15, were arrested here by state police Friday in connection with the theft of a car from Portland Thursday.

The vehicle was found abandoned on Blackwell hill. Officers said the youths, who live in Gresham and Portland, admitted taking the car and leaving it when the motor broke down.

## NAMED DIRECTOR

Astoria — Ted R. Gamble Friday was named chairman of the board of directors of the Columbia River Packers association. Also added to the board were Frank Belgrano Jr., and Wendell Wyatt.

## The BEARER ROOM

Here the bearers may assemble and receive assistance for their part in the memorial service.

**Conger-Morris**  
FUNERAL DIRECTORS  
W. MAIN AT SIXTH