

Pear Blight Infestations Serious Here This Year

Jackson county fruit growers are still anticipating an average pear crop this year, but are faced with a more serious blight problem than they have had for about 15 years.

C. B. Cordy, county horticulture agent, said most of the blight occurred during the second bloom about a month ago. Bartlett appears more extensively infected than other varieties.

growers who have exercised cultural practices for growth stimulation in their orchards to spray their trees with streptomycin. He explained that streptomycin is absorbed in tissues and is more effective than copper, which must be applied in open blossoms.

He pointed out that each infected tree has from 2 to 20 pieces of blight, and advises growers to cut out these areas right away. Since the bacteria progresses before signs of blight appear on the tree, Cordy advises cutting well below the visibly infected area.

Which reduced the quality. Pasture Grass

There is a good supply of pasture grass in the county and more corn and sudan grass are being raised now than in most years, Tucker said.

Spring seeded grain crops in dry land areas are suffering somewhat from absence of rain, Tucker commented. He said unless rain falls soon these crops "will be pretty much of a failure."

Sheep Raising Good

"Sheep raising here this year represents an unusually bright spot in agriculture," Tucker commented. He said lambs are developing well and wool prices are better than usual.

'Pretty Good' Crop, Stock Outlook Seen

The crop and livestock situations in Jackson county are looking "pretty good," according to County Agent W. B. Tucker.

Tucker said yields this year probably will not exceed average, but should come up to average. A large amount of hay is being harvested, but first cuttings contained a considerable amount of grass and weeds.

Plastic Film Shows Promise in Saving Silage Spoilage

Silage spoilage in trench and bunker type silos is responsible for considerable lost feed each year, according to Earle Jossy, county agriculture agent.

Plastic film shows considerable promise as a cover for these silos. Experimental evidence indicates that spoilage from exposure to air and water is largely eliminated.

Silos should be filled so the ensilage forms a mound above the sides of the silo to facilitate drainage, Jossy said. Large sheets of plastic are then placed over the silo and secured.

Another emergency method of saving feed has developed with the introduction of large plastic tubes. These tubes are rolled like a stocking and laid in a ring on the ground.

Black root rot is caused by about 10 different organisms and there is no known preventative or control method. Roots of infected plants turn black and leaves turn bronze-red in color.

Application of manure fertilizer on infected strawberry patches only increases the problem, the county agent pointed out.

Transplanting infected plants in fumigated soil is also a useless practice, he stated. Infected plants will carry black root rot to the new soil.

Young Plants Resistant

Most strawberry varieties are susceptible to the disease, he noted, but young plants are more tolerant than one-year-old or older plants.

When the crop has been harvested and set out new ones the following spring. Everbearers can be retained until the fall and spring crops have been harvested.

Cordy said black root rot is a serious problem in southern Oregon and this is one of few areas in which the disease has prevented commercial production of strawberries.

HEN DENIED TV OFFER

New Brunswick N. J.—A leghorn named Meggi O'Day won the Hunterdon county egg laying contest with a 22-day egg laying record and received a television offer.

At the same time, farm family living costs across the country moved up to hit a new all-time high, 3 per cent above a year ago.

Living Costs Up

At the same time, farm family living costs across the country moved up to hit a new all-time high, 3 per cent above a year ago.

While prices received by the nation's farmers were averaging a rise of about one-half of one per cent, Oregon farm prices dropped for the second consecutive month and are now at the same level as a year ago.

Oregon Prices Fail To Keep Pace With Gains Elsewhere

Corvallis—The general level of prices received by farmers across the nation moved up a bit in May and is now at the highest point since last July.

However, Oregon farm prices refused to follow the trend and dropped to the lowest point so far this year, according to Mrs. Elvera Horrell, extension agricultural economist at Oregon State college.

While prices received by the nation's farmers were averaging a rise of about one-half of one per cent, Oregon farm prices dropped for the second consecutive month and are now at the same level as a year ago.

Out of 18 major Oregon farm products that are checked monthly by U.S. department of agriculture, 11 were down in price from last year, 4 were up,

Strawberry Plants Favorite Victims For Root Disease

Strawberry plants appear to be favorite victims for black root rot, according to C. B. Cordy, county horticulture agent.

Black root rot is caused by about 10 different organisms and there is no known preventative or control method.

Application of manure fertilizer on infected strawberry patches only increases the problem, the county agent pointed out.

Transplanting infected plants in fumigated soil is also a useless practice, he stated.

When the crop has been harvested and set out new ones the following spring. Everbearers can be retained until the fall and spring crops have been harvested.

Cordy said black root rot is a serious problem in southern Oregon and this is one of few areas in which the disease has prevented commercial production of strawberries.

Brand Inspectors Examinations Due

Salem—The Oregon State Civil Service Commission has announced open-competitive examinations for the position of livestock brand inspectors with the state department of agriculture.

Any resident of the state of Oregon who meets the necessary requirements may apply. Applicants must have had two years experience in the livestock industry affording a knowledge of branding of livestock, ranch management procedures, or livestock marketing procedures.

Application forms may be obtained from the offices of the State Civil Service Commission at 102 Public Service Building, Salem, or 304 State Office Building, Portland.

Each properly registered owner-operator, renter or share landlord is entitled to vote, including a single vote for a partner ship, corporation or any other business entity.

Bentgrass Growers Referendum Stated

Salem—A Highland Bentgrass growers referendum on the proposal to create a commodity commission will be held June 24 to 28 according to the state department of agriculture.

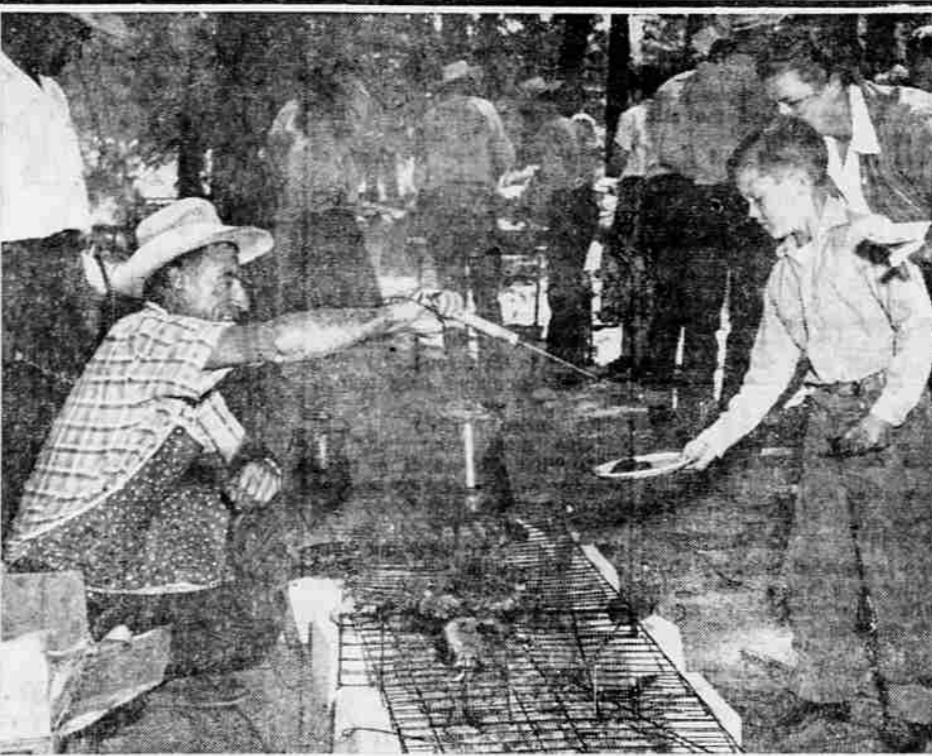
The referendum follows public hearings held during the month of April. Paul T. Rowell, chief of the division of market development, says under the 1957 amendments to the commodity commission act, any producer of Highland Bentgrass seed who registered with the department at least twenty days prior to the referendum is eligible to vote.

Each properly registered owner-operator, renter or share landlord is entitled to vote, including a single vote for a partner ship, corporation or any other business entity.

The referendum follows public hearings held during the month of April. Paul T. Rowell, chief of the division of market development, says under the 1957 amendments to the commodity commission act, any producer of Highland Bentgrass seed who registered with the department at least twenty days prior to the referendum is eligible to vote.

Each properly registered owner-operator, renter or share landlord is entitled to vote, including a single vote for a partner ship, corporation or any other business entity.

Farm and Garden



STEAK FRY—Prime sirloin steaks broiled over charcoal were the bill of fare at the annual Cal-Ore Hereford Breeder's association picnic held at the W.H.R. Nostrand ranch near McKee bridge last Sunday. Earle Jossy, county extension agent, who cooked the steaks, is shown above serving 9-year-old Ward Conger, son of Mr. and Mrs. Lewis Williams creek. Lippert showed a polled bull which he recently purchased at the Denver Live-stock show in Colorado.

Conger. The Congers own a Hereford ranch on Ross lane, Medford. Bill Bigham, as in past years, was in charge of the "cowboy" style fried potato department. About 60 people were at the picnic, and the group toured several ranches in the Applegate and Central areas.

Sixty Participate in Cal-Ore Tour

Central Point—Approximately 60 Rogue valley residents took part in the annual Cal-Ore Hereford association tour Sunday.

The group first inspected Hereford cattle at the E. N. Lippert ranch on Watergap rd. near Williams creek. Lippert showed a polled bull which he recently purchased at the Denver Live-stock show in Colorado.

From there, the group went to the W.H.R. Nostrand farm on the Upper Applegate. After inspecting the cattle, they were served lunch near the river.

After the dinner, the group drove to the R. H. Fields farm at Central Point. Assisting Fields in showing the cattle was his son-in-law, Norman Jacob, who with Mrs. Jacob and their sons drove from Malin for the show.

50 Local 4-H Club Youths in Corvallis

Fifty Jackson County 4-H club members left Monday for the annual 4-H club summer school session at Oregon State college, which will extend through June 21.

The club members have morning classes based on a variety of interests in home economics, agriculture, engineering, forestry, electricity, junior leadership, camp counseling, and others, according to Miss Marjorie Hattan and Glenn Klein, county 4-H agents.

They will have a chance to take part in assemblies so they can become acquainted with many phases of Oregon community life, such as the fairs association, Keep Oregon Green and Oregon Bankers association, whose activities.

Sports programs in swimming, soft ball, volleyball, and evening programs of music, movies and talent shows will keep them busy for the ten days' session that they will be at Corvallis, the county agents said.

Accompanying the delegation will be Mrs. Robert Rosenbaum and Mrs. H. B. Chapman, Ashland, Miss Hattan and Klein.

Virginia Martin, J. C. Penny, Nyla Murray, Antelope 4-H club; Carol Myers, Central Point 4-H club; Evelyn Niedermeyer, Phoenix 4-H club; Jeanette Nougier, Groceteria; Susie Palm, J. C. Penny; Alison Pinkham, County Fair board; Roma Shafer, Red Bluff Lumber company; Mavis Strom, U.S. National Bank (Medford Branch); Margaret Taylor, Westside extension unit; Daryl Zapell, Ashland Elks; Bill Anhorn, county fair board; Charles Babcock, county fair board.

Others Listed

Earl Bowen, county fair board; John Cox, Shady Cove grange; Norman Ditsworth, Monarch Feed and Seed; Wayne Ditsworth, Sis-Q 4-H club; Truman Elmore, Applegate 4-H club; David Foote, county fair board; James Frink, Central Point grange; Russell Frink, county fair board; Terry Gall, county fair board; Steve Geren, Upper Rogue grange.

Bobby Holt, Talent 4-H club; Gene Holt, Sis-Q 4-H club; John James, Bellevue grange; Bob Kuest, county fair board; Larry Meyer, Eagle Point grange; Gerald Reneau, Ashland Elks; James Reneau, U.S. National Bank (Ashland Branch); Gary Richardson, U.S. National Bank (Ashland Branch); Matt Rode, Groceteria; Henry Scott, Phoenix 4-H club; James Scott, county fair board; Carl Skyrman, Applegate 4-H club; Dean Sommer, Ashland Elks; and Craig Wright, Groceteria.

Bee Disease Topic Of New Circular

Corvallis—How to recognize and control diseases of bees is explained in a new circular published by the Oregon State college extension service.

When bees in an apiary become diseased, honey yields usually drop to the point where a profit is impossible, the circular points out. The major bee diseases are then described and pictures and charts are used to explain symptoms and control measures.

Diseases covered include nosema, paralysis, dysentery, American and European foulbrood, and sacbrood.

The circular, titled "Diseases of Bees—How to Recognize and Control," was written by W. P. Stephen, OSC entomologist. Oregon residents can get a copy at their county extension office or from the OSC bulletin clerk, Corvallis.

Seven 4-H Groups Participate in Trip

Seven 4-H clubs were represented at the forestry overnight trip, last week to the Four-Bit Creek forest camp at Butte Falls.

They took part in the many activities arranged for them with the assistance of Doug Finch, U.S. Forest Service, and Hank Davies, Medford Corporation.

Over 50 4-Hers and leaders took part in the treasure hunt, pacing contest, hunting fire hazards, fire safety and extinguishing contests.

The outstanding club in all events was the Antelope 4-H club, followed closely by the Southwest Medford Junior Foresters. Other clubs competing were the Sp-Q Rangers, the Gold Hill Timber Wolves, the Elk Trail Forestry Squares, Butte Falls Junior Foresters, and the Phoenix Brush Busters.

Growers To Decide Wheat Market Plan

Wheat farmers themselves will decide whether they want to use marketing quotas for their 1958 wheat crop when they vote in the referendum on June 20, according to Albert L. Straus, chairman of the Jackson County Agricultural Stabilization and Conservation committee.

Recent proclamation of marketing quotas for the 1958 crop of wheat conforms with legislative directives, the chairman explained. Under the governing legislation, the secretary of agriculture must proclaim marketing quotas for the next wheat crop when the available supply is 20 per cent or more above normal.

Over Normal Supply

The estimated supply of 1.825 million bushels available for the 1957-58 marketing year is actually 56 per cent above the normal supply of 1,170 million bushels, thus requiring a marketing quota proclamation for the 1958 wheat crop.

The quotas do not become effective, however, unless at least two-thirds of the producers voting in the referendum favor the use of the quotas. Straus explained. The outcome of the referendum will decide the level of the available price support for the 1958 crop, as well as whether quotas and penalties on "excess" wheat are used for the crop.

Highest Producing Dairy Herds Named For Jackson County

The Dairy Herd Improvement association has selected the five highest producing dairy herds in Jackson county for the month of May.

Owners of the top herds are Cloverlawn Guernsey farm, Fritz and Helen Carlson, Richard and Elizabeth Westberg, Ed Ramsay and Hubbard and Vaughn.

Cloverlawn Herd

The Cloverlawn herd consisted of 11 cow, no dry cows, producing an average of 1,159 pounds of milk and 60.1 pounds of butterfat; Carlson, 32 cows, no dry cows, producing 1,316 pounds milk, 47.2 pounds butterfat; Westberg, 28 cows, no dry cows, producing 931 pounds milk, 44.8 pounds butterfat; Ramsay, 37 cows, two dry cows, producing 960 pounds milk, 43.2 pounds butterfat; and Hubbard and Vaughn, 60 cows, six dry cows, producing 1,111 pounds milk, 43.1 pounds butterfat.

The ten top cows in the county are as follows: Other Cows: Myrth, owned by Richard and Elizabeth Westberg, 1,907 pounds milk, 103 pounds butterfat, 63 days in milk; Peggy, owned by Cloverlawn Guernsey farm, 1,497 pounds milk, 97.3 pounds butterfat, 66 days in milk; Jewel, owned by J. E. Parsons, 1,665 pounds milk, 96.6 pounds butterfat, 72 days in milk; Nina, owned by James A. Carlson, 2,269 pounds milk, 90.8 pounds butterfat, 31 days in milk.

Rolay Faye, owned by Lewis and Ruth Clark, 1,609 pounds milk, 85.3 pounds butterfat, 116 days in milk; Pet, owned by R. R. Bitterling, 1,544 pounds milk, 81.8 pounds butterfat, 86 days in milk; Cindy No. 2, owned by Lewis and Ruth Clark, 2,466 pounds milk, 81.4 pounds butterfat, 32 days in milk; Naomi, owned by Hubbard and Vaughn, 2,511 pounds milk, 80.4 pounds butterfat, 61 days in milk; Tinka, owned by James and Neola Edge, 2,161 pounds milk, 80 pounds butterfat, 60 days in milk; and Beverly, owned by Hubbard and Vaughn, 1,420 pounds milk, 78.1 pounds butterfat, 90 days in milk.

Temporary Bridge Put Over Illinois River

Cave Junction—Residents of the West Side road, cut off from Kerby when the 1955 floods tore away the old swinging bridge, will not need to take the "Long way around" any more.

A temporary bridge over the Illinois river downstream from the side of the former suspension bridge has been completed by volunteer workers. Previously a rickety span crossed the water at this point but most residents preferred to drive the some 10 miles to Kerby, just two miles from their homes, over a narrow dirt road which joins the Redwood highway south of Cave Junction.

A search is reportedly being made for a water-soluble systemic that can be assimilated by the tree and fight off infection at its source.

Francis Scott Key was not identified as the author of the Star Spangled Banner until several months after the anthem first appeared.

1957-58 marketing year is actually 56 per cent above the normal supply of 1,170 million bushels, thus requiring a marketing quota proclamation for the 1958 wheat crop.

The quotas do not become effective, however, unless at least two-thirds of the producers voting in the referendum favor the use of the quotas. Straus explained. The outcome of the referendum will decide the level of the available price support for the 1958 crop, as well as whether quotas and penalties on "excess" wheat are used for the crop.

Subject to Plenty

If approved by a two-thirds vote, farmers who exceed the farm allotment will be subject to a penalty of 45 per cent of the parity price on their excess wheat, and the support price for the 1958 wheat crop will be available for farmers who comply with their wheat allotments at a National average of \$1.78 per bushel. This represents 75 per cent of parity. If more than one-third of the wheat growers disapprove quotas, the quotas will not be in effect. However allotments will remain in effect, and farmers who comply with their wheat allotments will be eligible for support at 50 per cent of parity as directed by law, Straus pointed out.

All wheat growers are eligible to vote in the June 20 referendum who will share in the 1958 wheat crop from a farm in the commercial wheat area on which the wheat acreage to be harvested, plus any acreage to be placed in the soil bank's wheat acreage reserve, will be more than 15 acres. Eligible farmers in Jackson county may cast their ballot at the agricultural stabilization office in the court house between the hours of 8 a.m. and 7 p.m., Straus said.

All wheat growers are eligible to vote in the June 20 referendum who will share in the 1958 wheat crop from a farm in the commercial wheat area on which the wheat acreage to be harvested, plus any acreage to be placed in the soil bank's wheat acreage reserve, will be more than 15 acres. Eligible farmers in Jackson county may cast their ballot at the agricultural stabilization office in the court house between the hours of 8 a.m. and 7 p.m., Straus said.

All wheat growers are eligible to vote in the June 20 referendum who will share in the 1958 wheat crop from a farm in the commercial wheat area on which the wheat acreage to be harvested, plus any acreage to be placed in the soil bank's wheat acreage reserve, will be more than 15 acres. Eligible farmers in Jackson county may cast their ballot at the agricultural stabilization office in the court house between the hours of 8 a.m. and 7 p.m., Straus said.

All wheat growers are eligible to vote in the June 20 referendum who will share in the 1958 wheat crop from a farm in the commercial wheat area on which the wheat acreage to be harvested, plus any acreage to be placed in the soil bank's wheat acreage reserve, will be more than 15 acres. Eligible farmers in Jackson county may cast their ballot at the agricultural stabilization office in the court house between the hours of 8 a.m. and 7 p.m., Straus said.

All wheat growers are eligible to vote in the June 20 referendum who will share in the 1958 wheat crop from a farm in the commercial wheat area on which the wheat acreage to be harvested, plus any acreage to be placed in the soil bank's wheat acreage reserve, will be more than 15 acres. Eligible farmers in Jackson county may cast their ballot at the agricultural stabilization office in the court house between the hours of 8 a.m. and 7 p.m., Straus said.

Douglas County Bangs-Free Area

Salem—Douglas county is the 13th county in the state of Oregon to be certified as a Brucellosis-free area, according to the state department of agriculture.

Following completion of testing of 18,278 cattle in 2646 herds in the county by federal and state veterinarians, the area was certified May 24 as Brucellosis-free. Presentation of the certificate will be made at a later date by officials of the federal and state veterinarians' offices. Officials found 52 reactors among the cattle tested in the county for a very low 21/100ths of 1 per cent and 11 herds infected or 41/100ths of 1 per cent.

A 14th county, Umatilla, has been completely tested and is now awaiting certification. Officials have set a tentative target date for completion of the entire Brucellosis testing program in Oregon of June 30, 1959. However this date is contingent upon several factors foremost of which is the speed with which the bordering states of Nevada and California complete their programs in bordering counties where there is a heavy traffic in cattle between the states.

If the programs in these two states progress at the same rate as that in Oregon, officials feel this completion date could be reached.

If the programs in these two states progress at the same rate as that in Oregon, officials feel this completion date could be reached.

If the programs in these two states progress at the same rate as that in Oregon, officials feel this completion date could be reached.

If the programs in these two states progress at the same rate as that in Oregon, officials feel this completion date could be reached.

If the programs in these two states progress at the same rate as that in Oregon, officials feel this completion date could be reached.

If the programs in these two states progress at the same rate as that in Oregon, officials feel this completion date could be reached.

If the programs in these two states progress at the same rate as that in Oregon, officials feel this completion date could be reached.

If the programs in these two states progress at the same rate as that in Oregon, officials feel this completion date could be reached.

If the programs in these two states progress at the same rate as that in Oregon, officials feel this completion date could be reached.

If the programs in these two states progress at the same rate as that in Oregon, officials feel this completion date could be reached.

If the programs in these two states progress at the same rate as that in Oregon, officials feel this completion date could be reached.

If the programs in these two states progress at the same rate as that in Oregon, officials feel this completion date could be reached.

If the programs in these two states progress at the same rate as that in Oregon, officials feel this completion date could be reached.

If the programs in these two states progress at the same rate as that in Oregon, officials feel this completion date could be reached.

Deadly Fungus Reported on Oak

A deadly fungus has been reported developing on oak trees in many parts of the nation.

Local horticulture experts state the disease, known as oak wilt, has not been reported anywhere in the Rogue river valley.

The fungus has been found to enter through the roots or wounds in the tree, then spread in the sapwood under the bark. Oak will finally kills by clogging water-conducting capillaries. Trees cannot be immunized by inoculation and once infected, cannot be cured.

No species or variety of oak is immune to the deadly fungus, which is reported spreading from its midwestern focal point. In 30 years, the disease has spread from a few isolated stands in Minnesota, Wisconsin and Iowa to 18 states.

A search is reportedly being made for a water-soluble systemic that can be assimilated by the tree and fight off infection at its source.

Francis Scott Key was not identified as the author of the Star Spangled Banner until several months after the anthem first appeared.

Francis Scott Key was not identified as the author of the Star Spangled Banner until several months after the anthem first appeared.

Francis Scott Key was not identified as the author of the Star Spangled Banner until several months after the anthem first appeared.

Francis Scott Key was not identified as the author of the Star Spangled Banner until several months after the anthem first appeared.

Francis Scott Key was not identified as the author of the Star Spangled Banner until several months after the anthem first appeared.

Francis Scott Key was not identified as the author of the Star Spangled Banner until several months after the anthem first appeared.

Francis Scott Key was not identified as the author of the Star Spangled Banner until several months after the anthem first appeared.

Francis Scott Key was not identified as the author of the Star Spangled Banner until several months after the anthem first appeared.

Francis Scott Key was not identified as the author of the Star Spangled Banner until several months after the anthem first appeared.

BRILL
METAL WORKS
NEW LOCATION
2287 WEST MAIN
at Lozier Lane
Commercial • Industrial
Residential
Sheet Metal Work
PHONE 5P 2-4440

YOUR TRIANGLE DEALER Can Help You Get the Right Start for Your Chicks with TRIANGLE Chick Starter

This year feed for Extra Profit. Even though the season is late, your Triangle dealer can show you how you can speed up the growth of your chicks... in plenty of time for a good start in the laying house this Fall. He'll be glad to explain the improved formula of Triangle Chick Starter which now contains TMC-37 and Bifuran, plus a perfect balance of proteins, vitamins and minerals... a combination which gives you added life protection and amazingly rapid development for your chicks. Ask your dealer about it today. Mash or Pellet form.

TRIANGLE MILLING COMPANY
603-665 N. TILLAMOOK
PORTLAND, OREGON

MORTON Milling Co.
Medford, Oregon