

Southwest Lake Proves Greatest Tourist Paradise

Oklahoma City — (U.P.) — Fifty million fishermen can't be wrong, and that's part of the reason Lake Texoma, the sprawling, many-fingered body of water lying along the Texas - Oklahoma border, is America's most popular man-made lake.

More than 50 million persons have visited the lake since it was opened 13 years ago. Last year alone, 7,461,000 visitors were counted, breaking the all-time national attendance record for Army engineers' projects for the fifth straight year.

Texoma is called the "queen lake of the Southwest," and it's one of the most used and most publicized boating, fishing and vacationing spots in North America.

It is the fourth largest man-made lake. At normal elevation it covers nearly 100,000 acres. It has a winding, tortuous shoreline which varies in length from 600 to 1,250 miles, depending on the water level.

The big lake is a veritable boating empire, with an estimated 10,000 boats plying its surface each year. The boats range in size from tiny home-made fishing craft to luxurious 54-foot cruisers.

An excursion boat, the Idle Time has room for 160 passengers. The lake serves as home to more than 4,000 boats owned by sportsmen from nearby states.

The lake's best drawing card, perhaps, is its fish. One of the most productive fishing spots in the world, Texoma yields an average of 4,000,000 pounds of fish each year, 75 per cent being game fish.

Many experts say that more large mouth black bass are caught at Lake Texoma each year than out of any other body of water in the world.

Campers and picnickers find plenty of shade in the wooded area around the lake. There are many lakeside cabins, and the new \$2,000,000-plus lodge layout has drawn widespread comment.

A piano-shaped ultra-modern 106-room air-conditioned lodge has accommodations for conventions as well as tourists. A 20-room fisherman's lodge, 50 additional cabins and a swimming pool also are available.

The lake's location is a big reason why it draws visitors by the millions each year. It is in the middle of an area bounded by four large cities — Tulsa, Oklahoma City, Dallas and Fort Worth. Six million persons live within four hours driving time of the lake. It is easy to reach, by U.S. highways 77 and 69 on the north and 82 on the south. There are excellent north and south railway connections, and around the lake itself are seven air strips where private planes can land.

Despite its recreational offerings, the lake was built with a serious purpose, to tame the Red River, which for hundreds of years was a rampaging monster at flood stage. Congress authorized construction of the Denison Dam at a cost of 60 million dollars and work began in 1939. By summer of 1955 the lake had filled and the rush began. It has never stopped.

Youth, 15, Admits Firing 'Mercy' Shot

Crowley, La. — (U.P.) — Conrad Thibodeaux, 13, told a coroner's jury he accidentally shot his brother Jack, 15, in the back and then shot him again because he did not want to see him suffer.

Conrad said the gun went off accidentally while he was loading it while they were alone in their farm home. Conrad said his brother screamed and stumbled when the shot hit him in the back.

"I held the gun in my left hand and aimed it at Jack," the boy said. "I put my right hand over my eyes and pulled the trigger."

The second shot hit Jack in the head. The jury found that Jack died from two bullet wounds inflicted "at the hands" of the younger brother. No charges were filed.

Japan 'Regrets' Nuclear Explosion

Tokyo — Japan officially expressed "sincere regret" that the United States had gone ahead with its nuclear test explosion in Nevada.

It renewed its request that future tests be called off.

The Foreign Office noted in a press release that Japan had conveyed to the U. S. on April 29 "the earnest desire of the Japanese people, based upon humanitarian considerations, for the suspension of the nuclear tests."

"The U. S. government took a sympathetic attitude," it added. "The Japanese government, therefore, expresses its sincerest regret for the fact that the nuclear test was executed today."

4 BIG FREE PARKING LOT IN BACK OF OUR STORE

GROCETERIA

SIXTH AND GRAPE STREETS OPEN 7 DAYS A WEEK UNTIL 9 P.M.



PAY DAY SAVINGS

At YOUR GROCETERIA On BRANDS YOU KNOW ARE REALLY GOOD!

Make Your First of the Month Pay Check Stretch

- | | | | |
|--|-------------------|--------------|-----------------------|
| Kraft Kitchen Fresh Mayonnaise | Quart Jar | 55¢ | Save 18¢ |
| Zee Toilet Tissue | 4 Roll Pack | 29¢ | Save 6¢ |
| Boyd's Coffee | Lb. | 89¢ | Save 10¢ |
| Kleenex Facial Tissue | 400 Sheet | 29¢ | 4 For \$1.00 Save 16¢ |
| Tree Top Apple Juice | 46-oz. Can | 39¢ | 3 For \$1.00 Save 17¢ |
| Dennison Spaghetti and Meat Balls | No. 300 Can | 27¢ | 2 For 43¢ Save 11¢ |
| 3 Sisters Whole Kernel Corn | 303 Can | 2 For 29¢ | 8 For \$1.00 Save 16¢ |
| Wilamet Cut Green Beans | 303 Can | 2 For 29¢ | 8 For \$1.00 Save 16¢ |
| Mission Brand Sugar Peas | 303 Can | 2 For 29¢ | 8 For \$1.00 Save 16¢ |
| C & H Pure Cane Sugar | 10 Pound Bag | 99¢ | |
| Kotex Sanitary Napkins | Pkg. of 12 | 43¢ | 2 For 85¢ |
| Chinese Dinners Kubla Khan Combination | 89¢ | 2 For \$1.49 | Save 29¢ |
| Includes Shrimp, Chow Mein, Chicken Fried Rice | | | |
| Del Rogue Tomato Juice | 46-oz. Can | 25¢ | 3 For 69¢ Save 6¢ |
| Wheaties Cereal | Giant 12-oz. pkg. | 19¢ | Save 6¢ |

FRESH CAUGHT DEEP WATER PACIFIC RED SNAPPER FILLET **29^c** lb.

U.S. GRADED CHOICE CENTER CUT **CHUCK ROAST** **49^c** lb.

EXTRA LEAN — FRESH MADE **GROUND BEEF** **39^c** lb. **3 lbs. \$1.15**

Swift's Premium Brand Old Fashioned Smoke **Braunschweiger** **57^c** lb.

FRESH PRODUCE
Fancy Cello Pack — Salad Quality Packs weigh 1-lb. or Over

Carrots **3 PKGS 25^c**

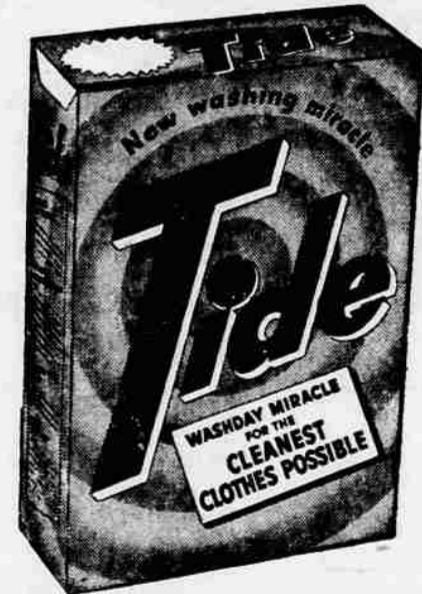
Cabbage **5^c** lb. **Celery** **10^c** lb.

CRISP, SOLID SWEET FOR SLAW OR SALAD

SNAPPY, CRISP FOR CELERY STICKS

WATERMELON Gold Cut Pieces or Warm. WE SELL NO. 1 MELONS ONLY!

For fresh local produce shop Groceteria — now in — Romaine, Red Lettuce, Salad Bowl Lettuce, Butter Lettuce, Radishes, Strawberries.



TIDE GIANT PKG. 59^c

- | | | |
|---|---------------|-----------|
| Joy Liquid Detergent | 12-oz. Can | 37¢ |
| Pink Camay | Regular Bar | 3 for 27¢ |
| Pink Camay | Bath Size Bar | 2 for 29¢ |
| Dash Detergent | 25-oz. pkg. | 37¢ |
| Lava Hand Soap | Reg. Size Bar | 12¢ |
| Cascade For Automatic Dishwashers, mfg. 10c off | | 39¢ |



FOLGERS INSTANT COFFEE 6-oz. Jar 1.45



DEL MONTE Pineapple-Grapefruit DRINK 46-oz. Can 29¢ 4 for 1.00 Save 16¢

NIAGARA STARCH 12-oz. Pkg. 21¢

LINIT STARCH 12-oz. Pkg. 16¢ 36-oz. Pkg. 43¢

MAZOLA OIL Quart 59¢

SOUPER BURGERS

A new way to enjoy hamburger



MUSHROOM BURGERS. RECIPE

Mushroom Burgers. Meat patties in mushroom sauce! Mix 1/2 cup Campbell's Cream of Mushroom Soup with 1 lb. ground beef, 1/4 cup dry bread crumbs, 2 tbs. minced onion, 1 tbs. minced parsley, 1 slightly beaten egg; shape into 8 patties. Brown in 1 tbs. butter. Blend remaining soup with 1/2 cup water; pour over patties. Cover and cook 5 min. Stir occasionally. Serve on 8 toasted buns.

Campbell's MUSHROOM SOUP 6 Cans \$1.00 **GROUND BEEF** 39¢ lb.

RELIEVE HEADACHE
PAIN...combat depression, tension

ANACIN FAST PAIN RELIEF HEADACHE, NEURALGIA, NEURITIS

3 out of 4 Doctors recommend the pain-relieving ingredients in **ANACIN**

12 TABLETS 23¢ 30 TABLETS 49¢ 50 TABLETS 69¢ 100 TABLETS 98¢

BOSCO FOR CHOCOLATE MILK OR ICE CREAM TOPPING 12-oz. Jar 37¢ 24-oz. Jar 63¢

Fluffo Shortening 3 LB. CANISTER PACK **99¢** Right Reserved to Limit Quantities

TREE TEA TREE TEA 1/2-lb. Pkg. 79¢

TREE TEA TRY TREE TEA AND SEE

TREE TEA TREE TEA 48 Bag 59¢

Crisco Shortening 1 Lb. Can 37¢ Ideal Size for Fishing Trip