

**IF YOU'RE NOT TRADING AT THE GROCETERIA YOU'RE PAYING TOO MUCH**

Good!



**EXTRA FANCY  
SMALL SIZE  
TENDERIZED  
SMOKED**

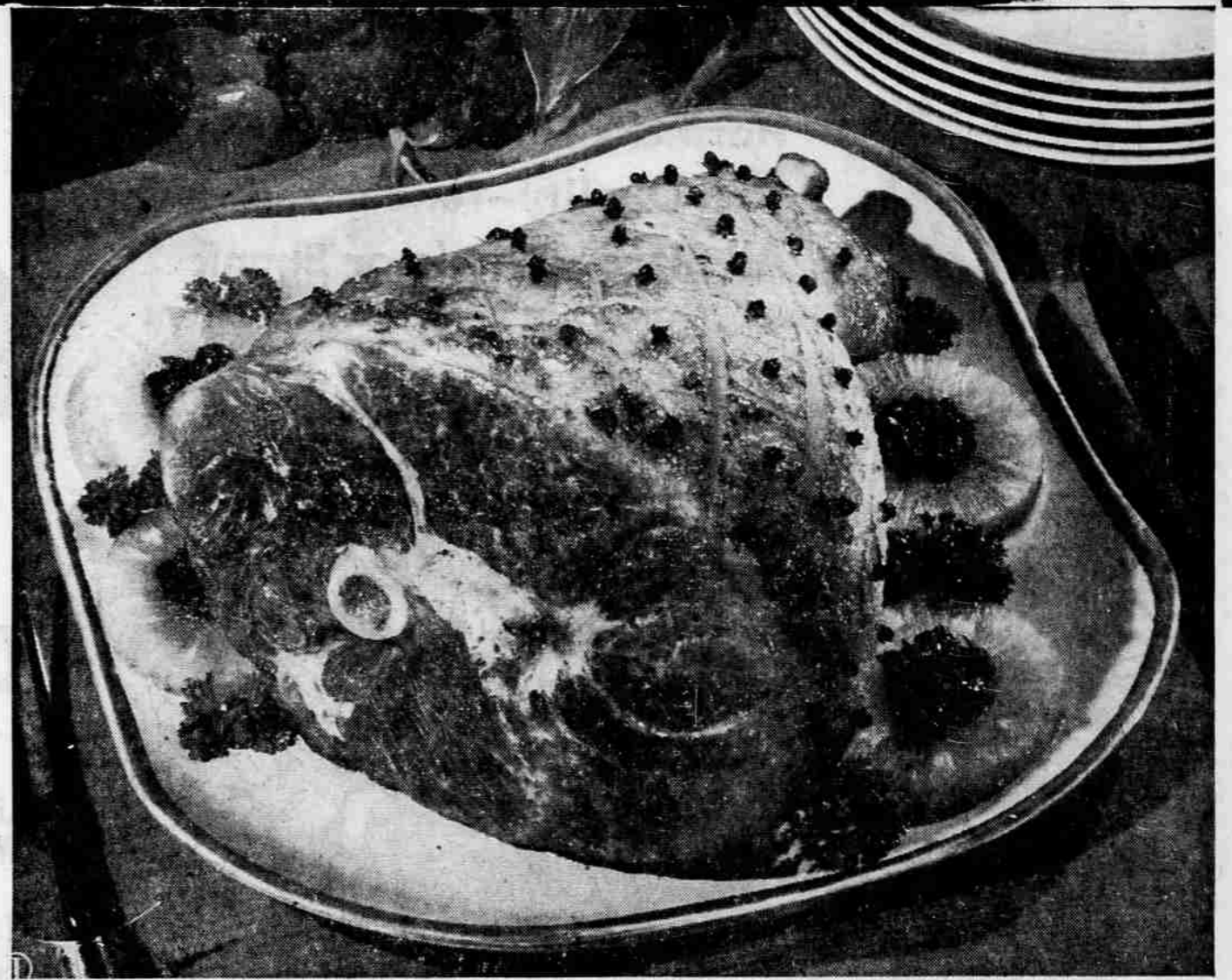
Shank  
Half or  
Whole

**HAM**

**AT THIS  
LOW PRICE**

FOR YOUR EASTER  
DINNER

**53<sup>c</sup>  
lb.**



SWIFT'S PREMIUM BRAND SHORT SHANK

**FULLY COOKED HAM 59<sup>c</sup>  
LB.**

Shank 1/2 or Whole — Ready to Eat  
No Waste in Cooking

**BAKED SHANK HALF OF HAM**

Looking for a good buy for your Easter dinner? Then keep in mind a shank half of ham. It's the most economical of all ham cuts and may be garnished as simply or elaborately as you wish for the festive meal. Modern, mild-cure hams should be baked, not boiled. To prepare a shank half of ham, place ham on a rack, fat side up, in an open pan. Add no water. Place in a 325° F. oven and bake 25 minutes per pound. Thirty minutes before the end of the baking period, take ham from oven, remove rind and score fat (cut in crisscross gashes to form diamond pattern). Stick with cloves, if desired, and spread fat with glaze. An interesting glaze is brown sugar slightly moistened with frozen orange juice (thawed and used undiluted). Or spread with jelly which has been melted and thinned with a little water. Return ham to oven to glaze.

U.S. GRADED CHOICE STEER

**Prime Rib Roast 69<sup>c</sup>  
lb**

Short Cut Chime Bone Removed

ARMOUR'S STAR BRAND—Fully Cooked Ready to Eat

**Canned Picnic \$2.49  
ea**

No Bone or Waste to Buy 4 lbs. Solid Meat

SWIFT'S PREMIUM BRAND—BROWN AND SERVE

**SAUSAGE 49<sup>c</sup>  
pkg.**

The Ideal Easter Breakfast

SWIFT'S PREMIUM BRAND

**SLICED BACON 57<sup>c</sup>  
lb**

2 POUND PKG. Thick Slices \$1.14

YOUNG TENDER—Extra Fancy, Oven Ready—Fresh Frosted

**Roasting Chickens 39<sup>c</sup>  
lb**

You May Fry Them if You Wish

FRESH CAUGHT DEEP WATER PACIFIC

**RED SNAPPER 27<sup>c</sup>  
LB.**

FILLET

We are featuring this item again this Week because we failed to have enough for all, last week.



Cascade Brand  
Foil Wrapped  
It's Fully Cooked  
Boned &  
Rolled

**HAM**

JUST HEAT  
AND EAT

**98<sup>c</sup>  
LB.**

**GROCETERIA SALADS**

Are Made Fresh Daily In Our Own Kitchen

POTATO SALAD MACARONI SALAD JELLO SALAD

PINT 39<sup>c</sup>

PINT 33<sup>c</sup>

PINT 33<sup>c</sup>

**Groceteria FRESH Produce**

LUSCIOUS RED RIPE FRESH

**STRAWBERRIES**

**2 12 OZ. CUPS 59<sup>c</sup>**

It's Short Cake Time!



FRESH HAWAIIAN  
Tangy Sweet

**PINEAPPLES Lb. 10<sup>c</sup>**

A NATURAL WITH HAM OR IN SALADS

**DELICIOUS SOCIETE  
EASTER CANDIES**



SOCIETE GUM BUNNIES 4-oz. Bag 39<sup>c</sup>  
SOCIETE MARSHMALLOW CANDIES 13-oz. Bag 39<sup>c</sup>  
SOCIETE MARSHMALLOW EGGS 12-oz. Pkg. 39<sup>c</sup>  
SOCIETE MARSHMALLOW EGGS Ass't Sizes 1 1/2-Lb. 59<sup>c</sup>  
SOCIETE JELLY BIRD EGGS Pound Pkg. 39<sup>c</sup>

We've got it! NOW IN DECORATOR CONTAINERS!  
**WHITE KING CLEANSER**  
LABEL ZIPS OFF 2 for 31<sup>c</sup>

NEW FLORIDA  
Red Potatoes 3 lbs. 25<sup>c</sup>  
FRESH Garden Peas 2 lbs. 35<sup>c</sup>

Red Yams 17<sup>c</sup> lb.  
Sweet Potatoes 17<sup>c</sup> lb.

You Will Find All Your Salad Vegetables At The Groceteria

**CLOSED  
EASTER  
SUNDAY,  
APRIL 21**

**Grade AA LARGE EGGS**

**43<sup>c</sup> DOZ. 2 DOZ. 85<sup>c</sup>**