

WE RESERVE THE RIGHT TO LIMIT QUANTITIES



LOW, LOW-PRICES

plus S.M. Green Stamps

ALWAYS A LOT OF FREE PARKING SPACE



HAPPY Easter

Magic

VALUES

LUX TOILET SOAP (Colored) Reg. Size—3 Bars **32¢**

LIFEBY SOAP Reg. Size—3 Bars **32¢**

SURE DETERGENT Gt. Size Pkg. **83¢**

Lux Flakes, Breeze Lge. Pkg. **35¢**

LUX LIQUID SOAP 12-oz. Tin **41¢**

SPRY SHORTENING 3-lb. Tin **99¢**

PACKED IN MEDFORD — 2½ TIN MEDFORD **PURPLE PLUMS** IN HEAVY SYRUP **5 CANS FOR 1<sup>00</sup>**

From Dorans' Poultry Farm **FRESH EGGS** WHITE ONLY — AA LARGE **2 DOZEN FOR 1<sup>00</sup>**

VAN CAMP'S **Pork and Beans** Large 2½ Tin **2 FOR 39¢**

ALBERS' FLAPJACK **FLOUR** 10 Lb. Bag **1<sup>19</sup>**

Open All Day EASTER

Prices Effective Fri. & Sat. Only at Both Stores! Stewart at King St. • 528 S. Riverside

Load Up for EASTER



WITH OUR FASHIONABLE FINE FOODS FOR THE FEAST

Nestles QUIK Delicious Chocolate Drink 2½-LB. TIN **89¢**  
Sweet Pickles STEINFELD'S JUMBO 1¼ QT. JAR **79¢**

U.S. CHOICE **CHUCK ROAST** **49¢** lb

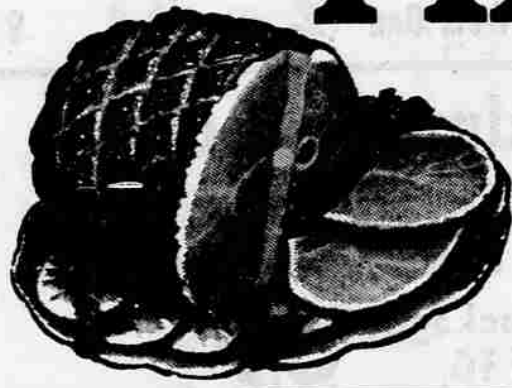
OVEN READY **Turkeys** 12 to 14-lb. Average **39¢** lb

serve **Quality MEATS**

DUBUQUE and HORMEL

**HAMS**

Whole or Shank Half



**53¢** lb.

Genuine Spring Lamb This Week!

SWIFT'S PREMIUM **Fryers** WHOLE DRAWN **39¢** lb CUT UP **49¢** lb

ARMOUR STAR **Boneless HAM** Fully Cooked **98¢** lb.



M.J.B. **COFFEE** 1-LB. TIN **99¢** 2-LB. TIN **1<sup>97</sup>** SERVED WITH FLUHRERS DUNKIES SATURDAY

BLUE BELL **Potato Chips** 6-OZ. PKG. **33¢** TRIPLE PACK **49¢** CHIPS AND CHEESE DIP DEMONSTRATION

SUNSHINE HI-HO—1-lb. pkg. **Crackers 37¢** CUP CUSTARD—11-oz. pkg. **Cookies 39¢** BUTTERSCOTCH—9-oz. pkg. **Carmels 29¢**

Piggly Wiggly Fresh Produce! **ASPARAGUS** • YOUNG • TENDER • PEAK OF THE CROP **2 lbs. 19¢** DELICIOUS — LARGE SIZE **AVOCADOS 2 FOR 39¢**

**SWEET POTATOES** A MUST WITH EASTER HAM **15¢** lb

**NEW PEAS** GARDEN FRESH **15¢** lb.

**NEW RED POTATOES** **2 lbs. 19¢**

**FRESH PINEAPPLE** DELICIOUS FLAVORING FOR YOUR EASTER HAM **25¢** EA.

CANTALOUPE — WATERMELON — SALAD MIX — WATERCRESS — SWISS CHARD — MUSHROOMS — LEAF LETTUCE — ROMAINE — ENDIVE — CRANBERRIES — RHUBARB

STEWART AT KING STS. • Open Every Day Until 9 p.m. • Lots of Free Parking • 528 S. RIVERSIDE