

# Compromise Brings Bruces Eddy Dam Closer To Authorization

BY A. ROBERT SMITH  
Mail Tribune Correspondent  
Washington — Because of a compromise arrangement worked out by Sen. Warren G. Magnuson (D-Wash.), another major multiple-purpose river project, Bruces Eddy dam, seems fairly certain to be authorized by Congress this session.

The Senate has already passed the omnibus river and harbor authorization bill which contains the project, located on a tributary of the Columbia, the Clearwater river in northern Idaho.

Despite opposition to Bruces Eddy dam from the Eisenhower administration and from Oregon's Sens. Richard L. Neuberger and Wayne Morse, the Senate approved it with little difficulty, mainly due to a clause worked out by Magnuson and his Washington state colleague, Sen. Henry M. Jackson.

Neuberger and Morse opposed the project on grounds that it would be harmful to conservation interests, mainly steelhead trout and deer and elk that feed in the area that would be flooded out by the Bruces Eddy reservoir.

Sen. Henry C. Dworshak (R-Ida.) championed the project. Freshman Sen. Frank Church (D-Idaho) at first expressed doubts about the dam for the same reasons expressed by conservationists.

The Magnuson compromise swung Church around to supporting the project and seemed to convince everyone in the Senate except the two Oregon senators. The compromise amounted to a proviso in the bill which states that no funds shall be appropriated for construction of this federal project until a fish and wildlife report has been completed to determine what conflict of interests may be involved.

Interim reports on fish and wildlife in the area are due this month, but final reports won't be complete for two years. Idaho Fish and Game Department has reported the number of trout from 1950 through 1955 averaged from 4,000 to 14,000 annually, while chinook salmon ranged from nine to 67 fish. It reported this past winter a count of some 250 elk feeding

**NEITHER DO SOME WOMEN!**  
Effingham, Ill. — (U.P.) — Mrs. John Nosbisch said her cocker spaniel, "Dodger," has learned to answer the telephone when it rings and bark into the receiver, but there's a hitch. Dodger doesn't know how to hang up.

below what would be the high water level of the reservoir, plus 12 mule deer and 55 white-tail deer.

### Against Partnership Project

Magnuson said he and Jackson were sympathetic to the concern of the conservationists, hence their proviso. But they said they were more anxious to get the dam authorized now as a federal project to offset any administration efforts to make

a "partnership" power project out of it. They said once it is authorized as a federal dam, it could not be built under any "partnership" pact with private power companies without Congress approving the deal.

Robert Merriam, assistant director of the Budget Bureau, has testified that the administration was opposed to authorizing this project until it had fully explored "the possibility of a

partnership arrangement."

Federal authorization now, Magnuson pointed out, will also prevent any private group from obtaining a license for a dam on that site from the Federal Power Commission. The FPC has granted a preliminary permit to a combine of four utilities, Pacific Power and Light, Washington Water Power, Portland General Electric and Montana Power companies, to allow

them to explore the dam site.

### Part of Cost Included

The Corps of Engineers has estimated the dam would cost \$122,650,000, but the bill only carries an authorization of \$25,000,000. It was explained that the strategy here was to include only part of the cost in order to help keep the total authorization in the omnibus bill as low as possible during the present "economy" wave that is sweep-

ing over the lawmakers.

As a federal project, the dam would have an installed capacity of 240,000 KW and create a reservoir with 1,433,000 acre-foot of usable flood control storage. It has been recommended by the Corps of Engineers to help provide additional storage in the presently uncontrolled Clearwater river before it dumps into the Snake and then the Columbia.

## Government Job Openings Reported

Openings are available in several government positions, the civil service commission has announced.

The positions include engineering aide, mathematics aide, physical science technician, management analyst and budget examiner. Salaries range from \$3,175 for beginning engineering, mathematics and physical science aides, to \$7,570 a year for

advanced management analyst and budget examiner.

The positions to be filled are located in the Washington, D.C., area. Announcements and application forms may be obtained from Chester W. Silliman, located in the Medford post office building.

### KIRBY CO.

Sales & Service  
1028 Murray, Med.  
PHONE 2-8355  
(Salesman Needed)

**Mann's**  
*Easter Parade of Values*

"Daisy Filigree" . . . Munsingwear's lilted companion lingerie . . .

**Companion Slip . . .** the slender silhouette of fashion in smooth-fitting nylon tricot elegantly detailed with Munsingwear's own daisy filigree Alencon lace. Sizes 32-42 **5<sup>95</sup>**

**The Classic Nightdress . . .** she'll be the best dressed girl in dreamland in this stately gown of nylon tricot . . . Grecian lines glorified with Alencon lace. Lace lined with chiffon-sheer nylon tricot at bodice, midriff and hemline. Sizes 32-42 **8<sup>95</sup>**

**Waltz-length Gown . . .** Gay as a Strauss waltz . . . with pertly piped oval neckline and saucy bows — in carefree nylon tricot kissed at the bodice and hem with Daisy Filigree lace. **8<sup>95</sup>** Sizes 32-38

## polished cottons 10.98

Easy-care, drip-dry fabrics in pretty "dress-up" prints — scoop necks or high collars — short sleeves or sleeveless — full or sheath skirts — a wonderful array of high fashion dresses at one low price! Sizes 8-20 . . .

## linen suits . . .

Colors: beige, navy or white. Sizes: 10 to 16 . . .

**16.98**

Crisp, sharp, precise! Fitted or box style in these fresh little suits. Just imagine — fully lined jackets at this tiny price! ¾ sleeves and ultra-expensive detailing. See these.

## easter coats

Sheerest beauty in wools — exciting tweeds and worsteds in an exciting bevy of styles and colors to carry you into summer. Some are millium lined, all are beautifully detailed & styled in sizes 6-16 . . .

**39.95**

## Spray Cologne

for Easter . . .



Now! An exciting new adventure in fragrance . . . spray colognes . . . so easy to use, one touch makes the most of each delightful drop . . .

by Giro  
by Shulton

See other Easter gift fragrances by such famous makers as Elizabeth Arden, Lanvin, Chanel, Schiaparelli, Dorothy Gray and many more . . .



### ✓ Check these terrific WEDNESDAY

#### ✓ 2 pc. LINEN DRESSES

Box suit styles or sleeveless blouse and full skirt—both styles in newest shades. 10-18.

• reg. 7.00 value . . . **6.**

#### ✓ MEN'S SPORT SHIRTS

Long sleeved cottons, rayons and corduroys — famous makes, broken sizes. S-M-L-XL.

• reg. to 7.95 values **4<sup>88</sup>**

#### ✓ COTTON PERCALE PRINTS

Fine percale in colorfast prints of spring — all 36" wide. Save 10c on each yard.

• reg. 39¢ yd. . . . **29<sup>c</sup>**

#### ✓ UTILITY GLOVES

Protects hands while doing garden and household chores. Save almost 1/2!

• reg. 1.39 pr. . . . **99<sup>c</sup>**

#### ✓ 5 pc. DINNERWARE SET

Two lovely patterns — place setting includes dinner, luncheon and salad plate, cup and saucer. Open stock . . .

• reg. 2.99 set . . . **2<sup>39</sup>**

#### ✓ LADIES' PEDAL PUSHERS

White duck with new Ivy League styling. Sizes 10-18.

• reg. 4.00 pr. . . . **3.**

#### ✓ MEN'S SUMMER ROBE

Crisp, washable seersucker—so easy to care for and wear. Sizes small and medium.

• reg. 10.98 value . . . **6<sup>88</sup>**

#### ✓ CANNON BEDSPREAD

Beautiful, practical Carlyle pattern — twins or fulls fitted style . . .

• reg. 10.98 . . . **7<sup>99</sup>**

#### ✓ BOYS' GABARDINE SLACKS

Smart styles for little boys' sizes 2-6, in easy care gab. fabric charcoal, blue, brown. Save 1.50 each!

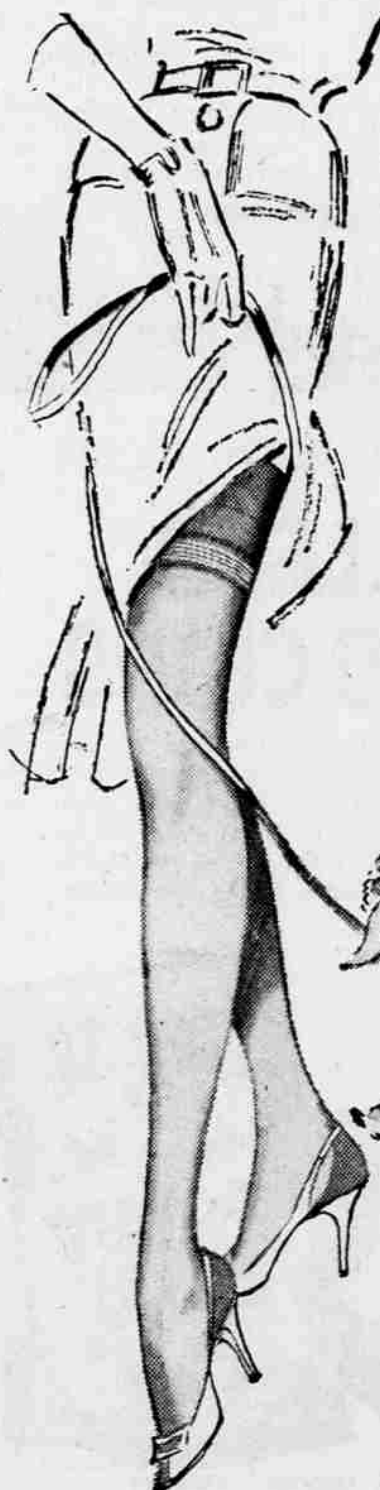
• reg. 3.99 value . . . **2<sup>50</sup>**

#### ✓ SHEER NYLON HOSE

Fabulous 60 gauge, 15 denier, good spring shades. Full fashioned, very slightly irregular . . .

• if reg. 1.35 pr. . . . **79<sup>c</sup>**

• these items on sale tomorrow only . . . don't miss them!



A gambler at heart—  
Archer's

## Lambkin...

Here's one of the sweetest, gentlest, most wearable greys ever to shade a stocking. Slightly demure with a most appealing blush—Lambkin's exciting nature comes to light with Spring's new greys—navy—all the blues, lilac tones and black.

## Archer

*Stockings for Lady Women*

**7<sup>65</sup>** the pair

In famous-for-fit Archer styles . . . sculptured full fashioned . . . carefree seamless. Perfected in your individual leg size: Trim for the Petite, Tween for the Average, Taper for the Stately.