

IF YOU'RE NOT TRADING AT THE GROCETERIA YOU'RE PAYING TOO MUCH!

SWIFT PREMIUM BRAND—FRESH DRESSED LARGE PLUMP

FRYING CHICKEN

Tender Grown
PAN READY

47^c
lb.

VALLEY PACKING CO. CASCADE BRAND—OLD FASHIONED

JUMBO FRANKS 3 POUND BAG **89^c**

YOUNG—TENDER—SMALL SIZE—FRESH

SPARE RIBS **47^c**
lb.

SWIFT BROOKFIELD BRAND—COOKING, MELTING or SANDWICH

CHEESE It's Delicious **2** POUND LOAF **73^c**

LIGHTHOUSE BRAND—FRESH PACK PACIFIC

OYSTERS **49^c**
PINT

YOUNG, TENDER, LEAN—SMALL SIZE

PORK LOIN RIB 1/2 or WHOLE We Will Cut in Chops For You **55^c**
lb.

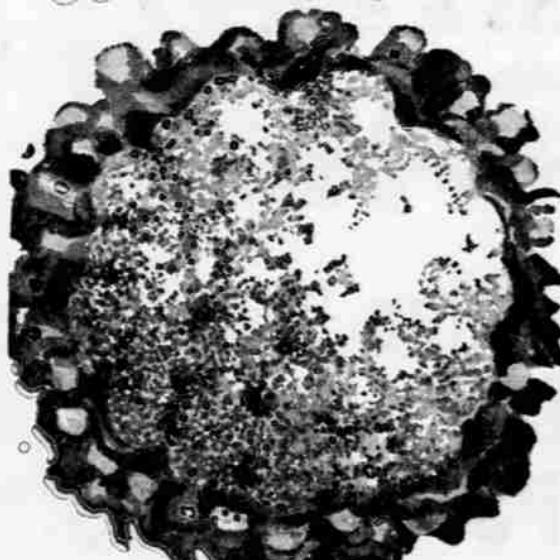
SWIFT'S PREMIUM BRAND

HAM FULLY COOKED, TABLE READY—SMOKED **63^c**
lb.
SHANK HALF or WHOLE

Meat Prices in This Ad Good Through Saturday, March 23

GROCETERIA FRESH PRODUCE

SNOBOY Prewrapped Vacuum Cooled



Cauliflower **13^c**
lb.
Retains the garden fresh flavor.
CREAMY WHITE TIGHT CLUSTERS

Texas Ruby Red GRAPEFRUIT 6 for 35^c
56 Size 12 FOR 69^c
Extra Heavy with Sweet Juice Eat Plenty and Keep a Slim Waistline

FRESH SPRING BEETS **10^c**
Bunch
SWEET AND TENDER—LOW IN CALORIES

FRESH LOCAL RED BIRD SPINACH For Salads, For Cooking **19^c** Pkg.
SUNKIST LEMONS Peps up those Lenten Meals **29^c** Doz.

RITZ CHEESE NBC **31^c**
8-oz. Pkg.

Orange Juice Minute Maid Frozen 6-oz. can 21c **6 for 100** Save 21c
Zee Toilet Tissue 4 Roll Pkg. **29^c** Save 6c
Spaghetti Franco American 15-oz. Can **2 for 25^c** Save 5c
Holiday Margarine **5 lbs. 1⁰⁰**
Skippy Dog Food **12 Cans 1⁰⁰** Save 8c
Hershey INSTANT MIX Chocolate 1-lb. Can **39^c** Save 6c
Choc'late Bars Nestles King Size **39^c—3 for 1⁰⁰** Save 17c

Snack Dip

SOUP CREAM 1/2 Pint **30^c**
LIPTON ONION SOUP MIX **18^c**
Both For **48^c**

Recipes for these easy to make snacks

CALIFORNIA DIP
1 pkg. Lipton Onion Soup Mix
1 qt. Commercial Sour Cream

PHILADELPHIA SPREAD
1 (1-oz.) pkg. Cream Cheese
1 pkg. Lipton Onion Soup Mix
1/2 pt. Commercial Sour Cream

Stir Lipton Onion Soup Mix just as it comes from the package into Sour Cream and blend thoroughly. Use as dip for potato chips, crackers or melba toast.

Allow Cream Cheese to soften. Stir in Lipton Onion Soup Mix just as it comes from the package and Sour Cream. Blend well. Use as a spread for crackers, melba toast or your favorite wafers.

Quantities of sour cream in above recipes may be varied to suit individual taste. This mixture is perishable and should be covered and stored in the refrigerator until served. Leftovers should not be used unless kept under refrigeration.

LIPTON PEA SOUP 2 pkgs. **29^c**
LIPTON NOODLE SOUP 3 pkgs. **39^c**

NALLEY'S Potato Chips
Freshest and Best—3 Sizes
25^c—39^c—59^c

SF Port Director Doubts Job Given Through Teamsters

San Francisco—(U.P.)—Charles Tait says he is sure that his appointment as San Francisco port director is the result of his more than 35 years of experience in shipping rather than through the "influence" of the Teamsters Union.

Tait made this statement Wednesday at a press conference in which he commented on testimony given in Washington by West Coast Teamster boss Frank Brewster.

Contributions Denied
Brewster told Senate investigators that he interceded with Gov. Goodwin J. Knight to get the \$18,000 a year post for his friend, Tait, a former Seattle stevedoring firm executive.

Brewster also said his union had contributed to Knight's campaign.

Knight promptly issued denials to Brewster's testimony. Through his secretary, he said: "We have no record of any financial contributions by the Teamsters' Union to any of my campaigns. All labor activity in my behalf was handled by groups within labor itself."

"The appointment of the port director of San Francisco was made by the Board of Harbor Commissioners and I had nothing to do with it."

Study of Withholding State Taxes Tackled By Taxation Group

Salem—(U.P.)—Study of a more realistic method of withholding state taxes got underway here yesterday at a hearing before the House Taxation Committee on House bills 8 and 234.

House bill 8, sponsored by Rep. William Frenfell Jr., Portland Democrat, provides for withholding state income taxes according to a system of graduated salary brackets.

House bill 234, drawn up by the State Tax Commission, provides for withholding on either a straight percentage basis or on a bracket basis. It follows federal withholding law.

Should consider Employee
Tom Scanlon, representative of the Oregon State Labor Council, told the committee that in setting up realistic withholding, first consideration should be given to the employee. He favored a graduated system rather than a percentage system as being more accurate.

However, he said that if taxes were withheld on a percentage basis, the percentages should be set on the side of overwithholding rather than with underwithholding.

Fraternity Bill Tabled
Frenfell said that under his bill large periodic payments of taxes would be avoided.

David J. Wied, Jefferson farmer, told the group that withholding on a bracket basis for farm laborers, particularly berry and bean pickers, would be extremely difficult. He said the present withholding of straight percentages was better.

Railroad Representative Bruce Pickett said he favored House bill 234 because it would give an employer his choice as to the easiest method of withholding.

Six Measures Passed
The taxation committee passed favorably on six relatively minor tax measures and tabled three others.

One of the tabled bills would exempt fraternities and sororities from payment of personal property taxes.

Another tabled bill would have set up tax conservation and supervision commissions in all Oregon counties. Committee members felt the state was not ready for such legislation until a thorough study could be made.

Around Hollywood

Hollywood (U.P.)—Shades of gray hairs, but Luana Patten, the little girl of "Song of the South," has followed Natalie Wood into the ranks of the grown-up film beauties.

Like Natalie, Luana was a child star who dropped out of sight for a few years during that all-knees-and-elbows stage. She had starred in Walt Disney's "Song of the South" with Bobby Driscoll (who recently applied for a marriage license), "Fun and Fancy Free," "So Dear to My Heart" and other movies.

This season Luana made her comeback in a Universal-International teen-age musical, "Rock Pretty Baby," and Disney brought her back to his studio for "Johnny Tremain."

Young Kathryn Grayson
Luana, 18, has big blue eyes and a tiny waist. She wears her long, blonde hair in a pony tail. She looks like a young Kathryn Grayson or Wanda Hendrix. And she is one ex-movie moppet, who does not regret having worked during the years when other children were going to school and helping mother with the dishes.

"I did a few television shows and then decided to get some education during the awkward age," she said. "Yes, you miss a lot when you're a child actress. It's a strain on a child to work. You don't lead a normal life. You don't play with the kids in the backyard after school and so forth."

Experienced Traveler
"But I feel it's all been made up to me," she continued. "I've been more places and seen more things right now than 90 per cent of so-called normal 18-year-olds. You miss less as a kid star than if you work in pictures during high-school years. Then you don't get to go to dances and football games."

After graduation from Long Beach High school, Luana moved from her home in that city to live in Hollywood near the movie studios. However, Luana soon moved back home to live with her parents.

"I just didn't like living alone in Hollywood," the shy, sweet-faced actress said. "But I'm on my own when I work. Before my mother and a social worker always were with me and mother took care of everything. Now I do it all."

Classroom TV in Oregon Assured By \$200,000 Grant

Eugene—(U.P.)—Oregon's first experimental classroom project in television teaching was assured today following announcement by the State Board of Higher Education of receipt of a \$200,000 grant from the Ford Foundation.

Chancellor John R. Richards said the grant would make it possible to start classroom television on three state campuses next September. The campuses are Oregon State, Oregon and Oregon College of Education.

Live Telecasts
Course work will originate at Oregon and Oregon State and live telecasts will be received by classes at the two schools as well as OCE.

The courses will be beamed on channel 7. The board has authorized award of contracts for a tower and station to activate channel 7 at Corvallis, with work expected to start before May 1.

Dr. Richards said it is intended that kinescopes of the lectures will be made available to other state supported schools.

Courses Scheduled
Dr. D. Glenn Starlin, head of the Oregon speech department, is head of the intercampus TV experiment.

Courses definitely scheduled so far are history of the U. S. and general chemistry. The history course will originate at Oregon and be taught by Dr. Wendell H. Stephenson. The chemistry course will be beamed from OSC with Drs. W. H. Slabaugh and M. B. Williams teaching.

Queen Mary Sails Despite Strikers

London—(U.P.)—The Royal Navy eased the liner Queen Mary out to sea today in defiance of warnings by striking shipyard workers and tugboatmen that the action would spread their walkout.

Union leaders sailed around the Cunard Line's luxury ship in launches as Admiralty tugs nosed it out of its berth and set it on its way to New York.

The union men shouted that the strike situation would become "very complicated" if the Navy tugs helped the liner. The tug crews ignored them.

Southampton tugboatmen went on strike Wednesday in sympathy with 200,000 shipyard workers who walked out Saturday and the tug crews refused to handle the Queen Mary.

Industrial sources said the Navy's action could spark a tugboatmen's strike throughout the nation and cripple the shipping industry.

This brought more gloom to government quarters here where Labor Minister Iain MacLeod has been trying all week to avert a strike of 2.5 million engineering workers.

Newsweek, Time To Raise Magazine Prices

New York—(U.P.)—Newsweek and Time magazines announced Wednesday they will raise their single copy prices from 20 to 25 cents because of rising paper and production costs.

The Newsweek increase takes effect with the April 1 issue which will go on the newsstands next week. Time will raise its price with the April 15 issue.

New Process Saves Fluoridation Money

Washington—(U.P.)—The National Institute of Dental Research has reported to Congress that a new process can save cities money on fluoridation of their drinking water to reduce tooth decay.

The new process uses a common chemical, fluorspar, in place of more costly fluoride compounds.

Dr. Francis A. Arnold Jr., institute director, told a House Appropriations Subcommittee that Baltimore, for example, could save \$54,000 a year by using the new process.

"Comparable savings could be obtained in other cities, depending upon the nature and size of their water systems," he said.

He said the new process had been proved practical in field tests.

SP Planting Trees In Haystack Burn

Owen H. Thomas, Medford, has been awarded a contract to plant about 40,000 three-year-old Douglas fir and Jeffrey pine seedlings on Southern Pacific timberland in northern California, the company has announced.

The planting will be done on a portion of private timberland destroyed in the Haystack fire in September, 1955. Location of planting is in the Barkhouse creek area in Siskiyou county and covers about 2,900 acres, company officials said.

Because of the limited supply of trees available, planting at this time will be on only 55 acres, Kermit Cuff, chief forester for SP, said. A total of 150,000 acres was affected by the burn. Cuff pointed out, but only 2,900 acres was denuded of timber, most of which was beyond natural reforestation.

Court Records

MUNICIPAL COURT
Donna L. Raymond, Rice, drunk in public, \$10.
Helen Louise Stacy, drunk in public, \$10.
Herman Cecil McGivney, drunk in public, 10 day sentence in city jail to be suspended upon payment of \$10 fine.
Mary Sue Monteith, failure to stop at stop sign, \$5.
Laurel Elmer Krause, failure to stop at red light, \$5.
Don M. Chavis, violation of basic rule, \$10.
Charles Edward Murray Jr., violation of basic rule, \$10.
Douglas Lee Reynolds, failure to stop at red light, no license driver permit, \$10.
Tommy Joe Merton, violation of basic rule, \$10.
Charles Russell Williams, violation of basic rule, \$10.
Vance Lewis Vincent, violation of basic rule, \$15.
John H. Loyd, displayed expired operators license, \$5.
Elvin Lynn Pierce, failure to stop at red light, \$5.
William W. Prouty, failure to stop at red light, \$5.
Rosario Mancuso, violation of basic rule, \$10.
Muriel Lorraine Burns, failure to stop at red light, \$5.
Arthur Vernon Hardy, failure to stop at red light, \$5.
Kenneth Ryder Severson, failure to stop at red light, \$5.
George W. Kelington, violation of basic rule, \$10.
William Lee Evans, violation of basic rule, \$10.
William A. Grossman, improper right turn, \$5.
D. Myron Johnson, violation of basic rule, \$10.

DISTRICT COURT
Gerald Keith Anderson, one license plate, \$10, bail forfeited.
Bob G. Stumbo, violation of basic rule, \$17.50, bail forfeited.
Rodney Arnold Perry, overload, \$53.
Lloyd Joseph Myrnest, overload, \$101.
Orin Wesley, violation of license plate, \$10, bail forfeited.
Orval Kermit White, vagrancy, \$30.
Gerald Richard Fanger, improper muffler, \$10, bail forfeited.
Carl Samuel Robbins, overload, \$10.
Harold Eugene McGrath, overweight, \$10.
Kenneth Wayne Shockley, driving without lights, \$5.
Louis Mary Lamoureux, drunk on public highway, \$15.

CIRCUIT COURT
Patricia Jane Gundlach vs. Jack Byron Gundlach, divorce complaint.
Betty Ann Esterton vs. Jay W. Esterton, divorce complaint.

HERTZ
RENT-A-CAR SYSTEM LICENSEE

Daily's U-Drive
Medford Airport

4-H CLUB NEWS

TRS Sewing Club
The TRS Sewing club met March 19, 1957, at the home of Mrs. Myers. It was the first meeting for some time because of so many members being sick. We made needle cases as our first project. We played games. The refreshments were served by Anita Pierce.

Barbara Penninger, Reporter