

Contributors to Heart Fund Drive Receive Thanks

By LAWRENCE S. HORTON
Medford Heart Chairman

Robert W. Ruhl and the Mail Tribune deserve special recognition for their financial and publicity support of the 1957 Heart Fund Educational and Fund Raising campaign conducted during February. Many other people have recognized the worthiness of research for heart diseases and made it possible for the Medford area contributions to exceed those in 1956 by nearly 50 per cent. The total is expected to reach \$5,000 for Jackson county for 1957.

Other support of the Heart Fund came from a special gifts committee composed of Glenn Jackson, vice president and sales manager of the California Oregon Power company; G. W. Kelington, president of Jackson County Bar association; Dr. Oscar Heyerman, director of the Oregon Heart association; and Dr. Duane Nelson, president of the Southern Oregon Dental association.

Heart Sunday was conducted under the direction of Margaret Heigel and her force of volunteer ladies who braved a deluge of wet weather and wind to call on nearly every home in Medford Feb. 24. Despite rain and mud, citizens of Medford greeted these workers with contributions that exceeded the previous year by several hundred dollars. It is wonderful to be able to thank each of the more than 300 volunteers for their participation.

Other support of the solicitation portion of the campaign came from Harry Marshall, Medford real estate salesman; Wayne Struble, architect, and the 20-30 service club. These people comprised the bulk of the business solicitations. They were under the direction of Charles Parker, J. C. Penney department head.

Publicity Support
Publicity support was also donated by television station KBES-TV and radio stations KMED, KYJC, and KBOY. Alan Hunt, Bear Creek Orchards, did an inspiring job with these organizations and the newspaper.

The Oregon Public Health association television show on Sunday, Feb. 17 under the direction of Dr. Ralph Hibbs with several other doctors and "Pinky" McDougal participating gave further insight to heart surgery. McDougal is Jackson county's most recent example of the results of advances in research in heart surgery. The surgeons skills replaced one of his heart valves with a plastic one to enable this young man to participate in physical activities as though nothing had happened.

Important Phase
One of the more important phases of the Heart Fund activities in Medford is that of the memorial gifts. Many people in this area remember their loved ones through gifts to the Heart association at the time of death or on some anniversary.

These gifts are being received by Mrs. Marina Gates, California Oregon Power company, throughout the entire year. She notifies the family of the gift and forwards the money to the Oregon Heart association where it is used entirely for research to overcome heart diseases.

The above mentions a few of the people who participated unselfishly in the work of obtaining funds for control of America's number one killer, heart disease. There are many more such as Dwight Houghton, U.S. National bank, Medford Heart Fund treasurer, and other volunteers who made this 1957 Heart Fund drive successful.

Contributions may still be made by those who would still like to participate.

Festival Mailing Questionnaire Cards

Ashland — Survey questionnaire cards are being mailed to representative residents and merchants in the Medford-Ashland area by the Oregon Shakespearean Festival association.

Purpose of the cards is to enable the festival association to better evaluate future developments in southern Oregon, according to William Patton, general manager.

The festival board of directors is interested in keeping the event closely allied with interests of the people in this region from both an economic and production standpoint, he said. The board believes the best way to accomplish this is by writing directly to individuals representing various segments of the population and asking for answers to specific questions regarding the festival.

It is hoped that sufficient numbers of the questionnaire cards will be returned to provide a valid basis for judging replies. Two thousand cards are being mailed today in an introductory survey.

If this is successful, a survey of larger proportions and wide-spread geographical scope may be considered by the festival association, Patton stated.

The cause of muscular dystrophy is still undetermined.

Langley Invokes Fifth Amendment 10 Times in 10 Minutes at Rackets Hearing

Washington — (U.P.) — District Attorney William M. Langley, 40, of Portland, invoked the Fifth Amendment today and refused on grounds of possible self-incrimination to tell Senate investigators when he first met racketeer James E. Elkins.

Langley invoked the Fifth Amendment 10 times in the first 10 minutes of his testimony before the Senate Rackets Committee.

Clenching his hands in his lap, and responding to the questions in a monotone, Langley refused to say:

—Whether he knew Elkins.
—Whether he knew Thomas E. Maloney, Seattle gambler and associate of Teamsters' Union officials.

—Whether he knew Joseph P. McLaughlin, identified as a Seattle gambler.

—Whether he knew Clyde Crosby, international agent for the Teamsters Union.

Admits Knowing Mayor

—Whether he had any interest in gambling operations when he ran for district attorney in 1949 (the year he was defeated).

—Whether he had ever been associated with Elkins in a gambling operation. (Elkins has testified that he was a partner

with Langley in a gambling joint known as the Chinese Lantern).

Langley did tell the committee that he knew Mayor Terry Schruck of Portland.

Chairman John L. McClellan (D-Ark.) of the Senate Rackets Committee asked Langley if he "honestly" believed "truthful" answers would incriminate him.

The district attorney replied that "in this setting the answers might tend" to do so.

Under Indictment
Committee members quizzed Langley on what he meant by this setting.

Langley explained that he was under three indictments in Oregon, that statements had been made before the committee involving him, and that he felt the best place to settle the charges were in the Oregon courts.

Sen. Karl E. Mundt (R-S.D.), explained that the committee liked to ask its questions alone, not through some third party.

Langley said he didn't want to give the impression that he was "shutting off the committee entirely."

But he would be the sole judge of what questions he would answer and would give no information on any which he felt

would tend to incriminate him. **Testifies to Conspiracy**

Elkins has testified that he conspired with Langley, Teamsters Union officials and Seattle racketeers to control Portland's vice and gambling after Langley was elected district attorney of Multnomah County, Ore., with Teamsters Union backing.

Elkins later fell out with his alleged confederates.

The slim and handsome Langley, a boyish-looking figure in a light brown suit, was the first witness as the committee resumed hearings after the sensational arrest of James R. Hoffa, a high teamster official, on a charge of bribing a committee investigator to steal official documents.

Langley faced questioning on why the Teamsters Union allegedly paid his lawyer \$5,000. **Arrested at Hotel**

FBI agents arrested Hoffa at a swanky hotel here Wednesday night after working with the committee for a month to lay a trap baited with specially prepared committee documents.

The FBI said the committee papers were found in his possession.

At the same time the FBI arrested a one-time congressional committee counsel, Hyman I.

Fischbach, in Coral Gables, Fla., and Hoffa's secretary, Mrs. Fred Dobrescu, in Detroit. It charged Fischbach with bribery and held Mrs. Dobrescu as a material witness.

Fischbach 'Contact' Man
Hoffa was arrested shortly before midnight as he entered an elevator at the DuPont Plaza Hotel where he has a suite.

G-Men hustled him before U.S. Commissioner James Splain for arraignment on the bribery charge.

The FBI charged him with offering New York attorney John C. Cheasty \$18,000 to secure a job with the rackets committee to file documents from its files on its sensational investigation of the Teamsters Union.

The FBI said Cheasty, who cooperated with the committee and FBI from the start, actually received payments of \$1,000 and \$2,000 from Hoffa.

A committee spokesman said Fischbach—scheduled to be arraigned today in Miami—was the "original contact" man between Cheasty and Hoffa. Fischbach, a Miami attorney, was counsel for a special House subcommittee set up in 1950 to investigate crime in the District of Columbia.

Dr. Trost Named to Executive Committee

Ashland — Dr. Frederick Trost, assistant professor of psychology at Southern Oregon college, has been appointed to the executive committee of the Juvenile Courts' Advisory council of Jackson county for a term ending July 1, 1958.

According to Circuit Judge Herbert K. Hanna, of Jackson county, the function of the advisory council interprets the work of the juvenile court and the juvenile department to the community, and securing community support for the court.

The executive committee is charged with setting up personnel standards for juvenile department employees, evaluating and supporting budget requests, and spearheading action for a county detention home.

Upon completion of the detention home the executive committee will provide counsel and guidance in connection with its operational functions.

First use of American railroads to convey the news came in 1928 when copies of a presidential speech were sent from Washington to Baltimore in one hour and 13 minutes.

About one of every five people in the U. S. lives on a farm.

Actress Kim Novak Undergoes Examination

Hollywood — (U.P.) — Actress Kim Novak today underwent an examination at Cedars of Lebanon Hospital.

The blonde movie star was admitted to the hospital Wednesday suffering from exhaustion. She is expected to remain in the hospital another two days before taking a three weeks' vacation.

First broadcast of a presidential inauguration was that of Calvin Coolidge in 1925. The first telecast of such an event was Harry Truman's inauguration that occurred in 1949.

KIRBY CO.
Sales & Service
1028 Murray, Med.
PHONE 2-8355
(Salesman Wanted)

Use Mail Tribune Want Ads

BUSINESS OPPORTUNITY RETAIL CANDY STORE

Haas Chocolates of Oakland, California, will soon open a local retail candy store in Medford and would like to contact a responsible man or woman who would be interested in acting as owner-manager.

This is an opportunity for association with a 74 year old firm which has been famous for Quality Candies since 1882.

No previous experience necessary as Company will completely establish the store and provide company supervision.

This is an exceptional opportunity and applicants must have excellent character and credit references.

APPROXIMATELY \$4,200 WILL HANDLE

Interested parties write, giving Phone Number and Address so that local confidential interview may be arranged. Write Haas Chocolates, 6021 College Avenue, Oakland 18, California.

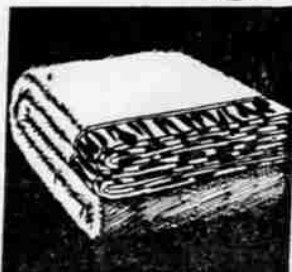
SAVE!
SAVE!
SAVE!
ALL DAY LONG!

AT WEISFIELD'S MEDFORD

ONE-HOUR SALE FRIDAY ONLY

SALE STARTS AT 9:00 A.M.

ON SALE 9 to 10 A.M. ONLY



Reg. 4.98—COLORFUL 72"x84" BLANKETS
Large double bed blankets 2.88
No money down... you set terms

ON SALE 12 to 1 P.M. ONLY

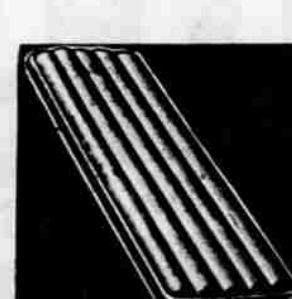


Reg. 49.95 Universal ELECTRIC FLOOR POLISHER
Twin-Brushes 29.88

ON SALE 3 to 4 P.M. ONLY



Reg. 10.95—20-PIECE DINNERWARE SET
Starter set, "frolie" or "leaf" pattern 4.95
No money down... you set terms



ON SALE 5 to 6 P.M. ONLY
Reg. 3.49—Full Length AIR MATTRESSES
1.99
Easy to inflate.
NO MONEY DOWN

ON SALE 9 to 10 A.M. ONLY

Reg. 17.95 Nelson DEEP FRYER COOKER
8.88
For One Hour Only
NO MONEY DOWN... YOU SET TERMS

ON SALE 12 to 1 P.M. ONLY



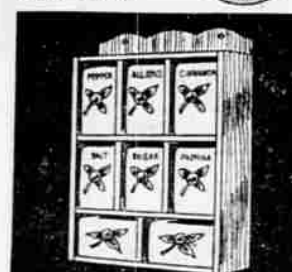
Reg. 6.95—REVOLVING 16-INCH LAZY SUSAN
Pottery dishes, turntable 3.49
No money down... you set terms

ON SALE 3 to 4 P.M. ONLY

Reg. 49.95 UNIVERSAL UPRIGHT VACUUM CLEANER
20.88
NO MONEY DOWN

ON SALE 5 to 6 P.M. ONLY
Reg. 3.49—Full Length AIR MATTRESSES
1.99
Easy to inflate.
NO MONEY DOWN

ON SALE 10 to 11 A.M. ONLY



Reg. 2.95—9-PIECE IMPORTED SPICE SET
Complete with wooden rack 1.29
No money down... you set terms

ON SALE 12 to 1 P.M. ONLY

Reg. 9.95 Stainless Steel 7-Pc. KITCHEN TOOL SET
3.88
Includes Rack
Heat Resistant Bakelite Handles
No Money Down... 25c Week

ON SALE 3 to 4 P.M. ONLY



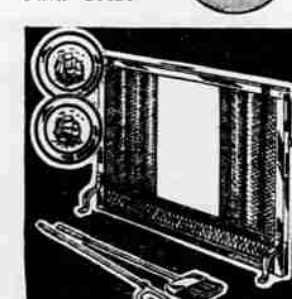
Reg. 2.95—FREEZER CONTAINER SET
18 plastic containers 99c
NO MONEY DOWN

ON SALE 5 to 6 P.M. ONLY
Reg. 3.49—Full Length AIR MATTRESSES
1.99
Easy to inflate.
NO MONEY DOWN

ON SALE 10 to 11 A.M. ONLY

Reg. 39.95—21-Piece Nationally Advertised ALUMINUM COOKWARE
15.88
Something Every Home Needs
NO MONEY DOWN

ON SALE 1 to 2 P.M. ONLY



Reg. 39.95 5-Piece FIREPLACE SCREEN ENSEMBLE
16.88
Brass or Wrought Iron

ON SALE 4 to 5 P.M. ONLY

Reg. 49.95 OLYMPIC TRANSISTOR PORTABLE RADIO
27.88
NOW
NO MONEY DOWN

ON SALE 5 to 6 P.M. ONLY
Reg. 3.49—Full Length AIR MATTRESSES
1.99
Easy to inflate.
NO MONEY DOWN

ON SALE 11 to 12 A.M. ONLY



Reg. 17.95 Modern Design OCCASIONAL TABLES
Coffee Tables or Step Tables 9.88
NO MONEY DOWN

ON SALE 1 to 2 P.M. ONLY

Reg. 24.95 CUCKOO CLOCKS
11.88
Imported from Black Forest of Germany

ON SALE 4 to 5 P.M. ONLY



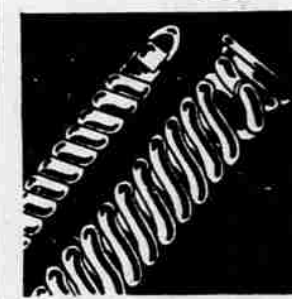
Reg. 2.95—PLASTIC MIXING BOWL SET
3 unbreakable plastic bowls 99c
NO MONEY DOWN

ON SALE 5 to 6 P.M. ONLY
Reg. 17.95 NELSON ELECTRIC AUTOMATIC POP-UP TOASTER
7.88
NO MONEY DOWN

ON SALE 11 to 12 A.M. ONLY

Reg. 39.95 3-Piece LUGGAGE SET
21.88
Vanity Case, 21" Weekender, 26" Pullman
NO MONEY DOWN

ON SALE 2 to 3 P.M. ONLY



EXPANDABLE WATCH BANDS
Ladies' and Men's Values to \$6.95 2.88

ON SALE 4 to 5 P.M. ONLY

Reg. 7.95 ROUND METAL PATIO TABLES
1.99
NO MONEY DOWN

ON SALE 5 to 6 P.M. ONLY
Reg. 17.95 NELSON ELECTRIC AUTOMATIC POP-UP TOASTER
7.88
NO MONEY DOWN

ON SALE 11 to 12 A.M. ONLY



Reg. 5.00—BILLFOLDS FOR LADIES, MEN
Roll's fine Wallets 1.77
No money down... you set terms

ON SALE 2 to 3 P.M. ONLY



Reg. 3.50 36" CLOWN DOLL
Plastic Face
Bright gay colors, stuffed
NO MONEY DOWN

ON SALE 5 to 6 P.M. ONLY



Reg. 17.95—Wool Filled SLEEPING BAGS
3-lb. wool padding 10.88
NO MONEY DOWN

LIMITED QUANTITIES — NO PHONE OR MAIL ORDERS



WEISFIELD'S
THE WEST COAST'S LARGEST
CREDIT Jewelers

122 EAST MAIN — Open Daily 9:30 A.M. to 5:30 P.M.