

some 2,300,000 civilian employees of the Federal Government.

Porter said the committee could be expected to continue its work in the three major areas of Post Office operations — Civil Service commission, personnel management and manpower utilization — which resulted in the savings of many millions of

dollars to the government.

Investigations were conducted by the Civil Service commission in seven field offices and two headquarters last year. Congresswoman Gracie Pfoest of Idaho, the only other Western member of the committee, was named to the subcommittee on manpower utilization.

**False Information On Kidnaping Charged**

Portland — (U.P.) — The FBI here said today that a federal complaint has been filed against Cove P. Burnes, 32, of Seattle, charging him with furnishing false information to the government. Burnes told authorities in Sa-

lem, Ore., Monday night that he had been kidnapped while en route to his Seattle job and was subsequently robbed. FBI officials said they had learned the story was a hoax and the U. S. attorney authorized filing a federal complaint.

**STURGEON STATISTIC**

San Francisco — (U.P.) — A 462-pound sturgeon taken from the Sacramento river at Fremont Weir contained an estimated 1.7 million eggs, with each ovary weighing more than 84 pounds, the National Automobile Club reports.

**Porter Appointed To Subcommittee On Civil Service**

Washington, D.C.—(Special)—Congressman Charles O. Porter has been named to the investigating subcommittee on civil service of the House committee on post office and civil service. Civil Service commission and the department and agencies, in the adoption and administration of new policy programs and procedures for the management of



**FREE DELIVERY**

SHOP WEEK DAYS AT YOUR LOCALLY-OWNED QUALITY MARKET Where Top Quality and Courteous Service is a Must Plus an Absolute Guarantee with Every Purchase.

**WE ARE CLOSED SUNDAYS**

WILSON'S "BIF" 12 oz. Tins  
**Chopped BEEF** **3 89<sup>c</sup>**

WILSON'S ALL-BEEF 1 lb. Jars  
**TAMALES** **\$1 00**

Party Time Short Cut No. 303 Tins  
**Green Beans** **8 \$1 00**

Hershey's Semi-Sweet 6-OZ. PKGS.  
**Chocolate Chips** **2 29<sup>c</sup>**

Dial Soap 2 Bath Size 1 Regular } ALL 3 FOR **37<sup>c</sup>**

**TIDE** LARGE PKG. **31<sup>c</sup>** GIANT PKG. **75<sup>c</sup>**  
 KING SIZE **\$1 25** HOME LAUNDRY **\$3 73**

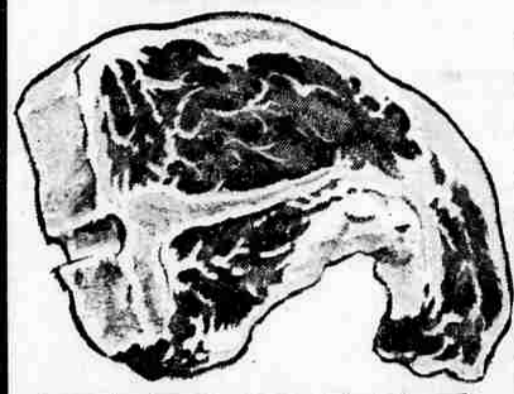
- CHEER Giant Pkg. **75<sup>c</sup>**
- IVORY SNOW Giant Pkg. **77<sup>c</sup>**
- IVORY FLAKES Giant Pkg. **77<sup>c</sup>**
- OXYDOL Giant Pkg. **79<sup>c</sup>**
- DREFT Giant Pkg. **75<sup>c</sup>**
- DUZ Giant Pkg. **75<sup>c</sup>**
- NEW DASH Jumbo Pkg. **\$2 13**
- DETERGENT Home Laundry **\$4 27**

*Ed Milne's*  
**QUALITY MARKET**

PHONE 2-7137  
 222 WEST MAIN NEXT TO COPCO

**SAVE TIME! SAVE GASOLINE! SAVE MONEY!—SHOP THIS EASY WAY AT THE QUALITY — PHONE 2-7137 for our courteous, prompt free delivery right to your door. Or when shopping downtown come in and select your foods and have them delivered FREE to your house.**

**WE WELCOME CHARGE ACCOUNTS ON APPROVED CREDIT**



**T-BONE STEAK**  
 "CHOICE" CORN FED BEEF Well Trimmed **98<sup>c</sup> lb.**

WE FEATURE MORRELL'S FANCY MIDWEST CORN - FED "CHOICE GRADE" STEER BEEF — Taste the Difference! This Same Top Quality Meat is Served in the Finest Eating Places in Portland and Seattle. TREAT YOURSELF TO A FINE STEAK — ACTUALLY COSTS LESS BECAUSE YOU WILL ENJOY EVERY BITE!

**BONELESS SIRLOIN STEAK** "CHOICE" AGED CORN FED STEER BEEF **\$1 29 lb.**

<b>ROUND STEAK</b> ALL CENTER CUTS Wonderful Flavor <b>85<sup>c</sup> lb.</b>	<b>PRIME RIB ROAST.</b> Prepared for Easy Carving Before Weighing <b>79<sup>c</sup> lb.</b>	<b>Boneless Beef Cubes</b> Tender, Lean Cubes for Braising or Stewing <b>69<sup>c</sup> lb.</b>	<b>POT ROAST</b> Corn Fed Old Fashion Pot Roast Real Tender <b>59<sup>c</sup> lb.</b>	<b>SIRLOIN TIP ROAST</b> Solid — Lean Tender Meat — Eastern Beef — <b>89<sup>c</sup> lb.</b>
----------------------------------------------------------------------------------------	---------------------------------------------------------------------------------------------------	-------------------------------------------------------------------------------------------------------	---------------------------------------------------------------------------------------------	----------------------------------------------------------------------------------------------------

The Meat Inside Makes the Difference  
**SWIFT'S PREMIUM FRANKS**  
**39<sup>c</sup> lb.**

**! JUST ARRIVED !**  
 FANCY, FRESH COLUMBIA RIVER SPRING CHINOOK SALMON (ALSO FRESH SMELT)

<b>Pork Sausage</b> Our Own Delicious Country Style <b>49<sup>c</sup> lb.</b>
<b>Boneless PORK Loin Roast</b> Solid Meat Tender <b>69<sup>c</sup> lb.</b>
<b>HAM LOAF</b> Ground Smoked Ham and Veal <b>59<sup>c</sup> lb.</b>

Ocean Fresh  
 LITTLE NECK STEAMING   
**CLAMS** **29<sup>c</sup> lb.**

**Ground BEEF** PURE FRESH BEEF NO CEREAL ADDED **3 LBS \$1 00**

**MEDFORD'S FINEST AND FRESHEST PRODUCE**

FANCY MEDIUM SPEAR   
**ASPARAGUS** lb. **29<sup>c</sup>**

FRESH LOCAL Cello Bag **Spinach** **19<sup>c</sup>**

EXTRA FANCY POUND **Rhubarb** **19<sup>c</sup>**

ARIZONA VALENCIA 5 lb. Bag **Oranges** **39<sup>c</sup>**

LARGE JUICY "SUNKIST" DOZEN **Lemons** **29<sup>c</sup>**