



\$ 90,000.00 STOCK

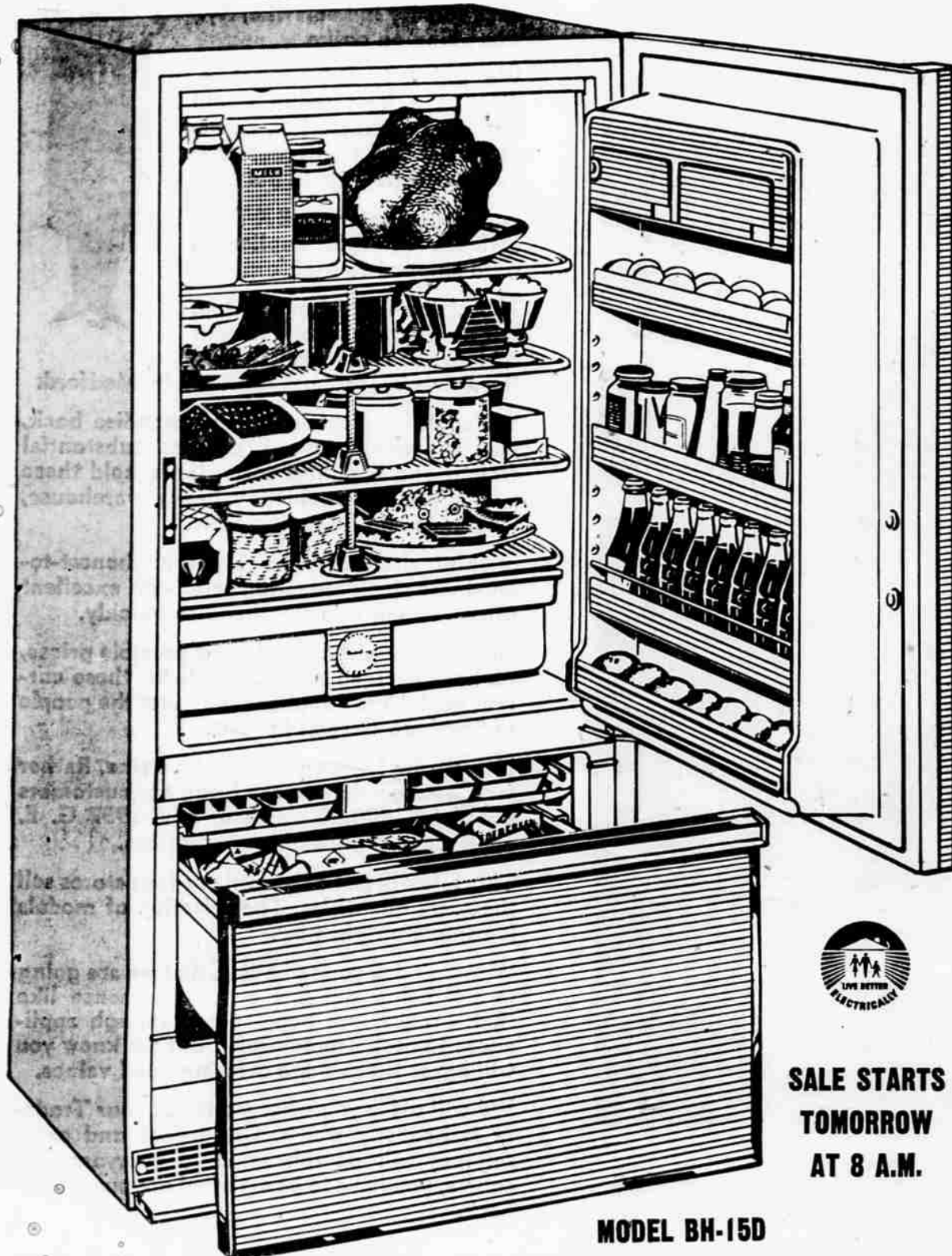
We phoned Mr. Jim Clouse, the manager for Oregon of our Finance Company — the General Electric Credit Corporation. We told him about our plans for a stock reduction sale.

We talked to Jim about how money is kind of tight for two or three months every winter in Southern Oregon. We thought we would need some special credit terms.

We were glad Jim said, "Okay, if the customers credit is good — work out any kind of terms that are necessary."

So during our sale we can sell for nothing down, delay the first payment until things open up in the Spring, and our customers can have as long as three years to pay.

- ✓ PAY NO MONEY DOWN DURING THIS SALE
- ✓ UP TO 3 YEARS TO PAY . . . BUY NOW AND SAVE
- ✓ 1st PAYMENT CAN BE DELAYED UNTIL SPRING



GE REFRIGERATOR FREEZER

REGULAR \$559.95
SALE PRICED
\$509⁹⁵

ONLY
\$19⁵⁰
PER MONTH
30 MONTHS

SAVE \$50⁰⁰

All the money-saving seasonal and quantity buying advantages of a 175 pound Freezer . . . that rolls into the kitchen for easy accessibility . . . This sale will last only until our four stores sell the extra carloads. The selection is complete now.

10 Cubic-Foot fresh food storage. The shelves revolve to give access to every inch of shelf. Air moisture keeps all foods, including leftovers—and green vegetables, fresh and crisp. If you have a trade—we'll give you every cent that we honestly think that it is worth.

Magnetic Doors never jar or jolt shelf contents. The square — Straight Line — Design makes building-in practical and eliminates side and end clearance. Even at sale prices you'll always receive the extra services you expect when you buy a fine G-E Appliance.

GE 12 Cubic Foot REFRIGERATOR



REGULAR \$289.95
SALE PRICED
\$269⁹⁵

SAVE
\$20

\$10 PER MONTH

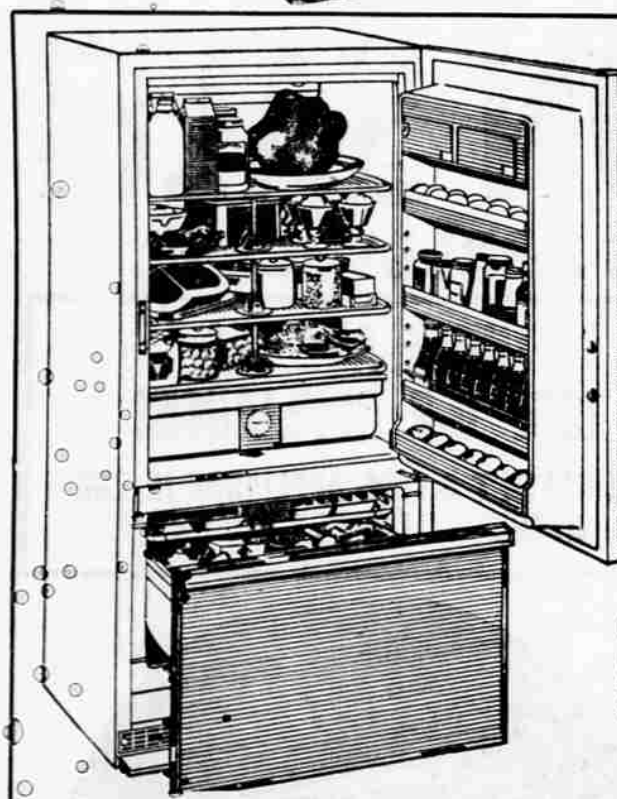
Full-Width Freezer compartment makes ice cubes faster and saves you money on groceries . . . No more sour cream because the door didn't latch tight, when your refrigerator is a new G-E with Magnetic Door. Even at these low Sale-Prices you always receive the extra service that you expect when you buy an appliance bearing the proud G.E. Nameplate.

Nothing Down



SALE STARTS
TOMORROW
AT 8 A.M.

MODEL BH-15D



13 Cu. Ft. Refrigerator-Freezer

Straight-Line Design . . . The door will open if your hands are full . . . just a touch of your toe does it. Butter Control set it for spread or whip. Cheese-Keeper, too. If you have a trade—we'll give you all that we honestly think that it's worth.

Regular Price \$469.95
WHILE SALE LASTS **\$429⁹⁵**
SAVE \$40

Roll-Out-Freezer . . . Saves you money . . . All the game birds and fish have a place to stay till you are ready for them . . . Refrigerator can be placed flush in a corner—or, completely built-in.

PAY ONLY \$16.50 A MONTH

MISC. SALE - ITEM PRICES

1957 MODEL NUMBER	REGULAR	SALE PRICE	SAVE	Per Month
LB 81P 8 ft. Refrigerator	229.95	219.95	10.00	8.25
LB 10P 10 ft. Refrigerator	249.95	239.95	10.00	8.95
LM 11P 11 ft. Refer-Freezer	349.95	319.95	30.00	12.25
BH 12P 12 ft. 2-Door Refer	399.95	379.95	20.00	14.25
J300P 30 inch Range	189.95	179.95	10.00	8.00
HU 11P 11 ft. Freezer	299.95	259.95	40.00	9.60
HU 13P 13 ft. Freezer	339.95	299.95	40.00	11.25
HU 18P 18 ft. Freezer	439.95	399.95	40.00	15.00

GE FOOD FREEZERS

18 Cubic Foot Model
REGULAR PRICE IS \$439.95

Sale Price

\$399⁹⁵ SAVE **\$40**

REFUNDS
GLADLY
AS ALWAYS

At Home Appliance
You Must Be
Satisfied—or
Your Money Back

