



NO MASKED FEELINGS HERE—A study in hate marks the end of a 10-day manhunt as the faces of this ring of police officers can't conceal the contempt felt for the most vile term in their vocabulary, "cop killer." Thomas Hamrick (right), ex-convict, was the "second man" in the killing of police Sergeant Joseph Lacey in San Francisco. He broke under questioning and named the killer as George V. Cole, 29, a lanky truck driver. The killing took place when Cole and Hamrick attempted to rob a tavern.

Laughs of the Day . . . Tribute Paid To Humphrey Bogart

Syracuse, N. Y. (U.P.)—Mrs. Christine Cox was startled when an object came hurtling through her apartment window recently. But she was even more startled when she took a look at the missile—a pound of frozen hamburger.

Ipswich, Mass. (U.P.)—When frogmen discovered a strong box in the wreckage of a vessel on the floor of Ipswich Bay, they figured they had hit the jackpot. Bob Atherly and Ed Lyman couldn't wait to get the box open. It was filled with an excellent grade of mud.

San Juan (U.P.)—This Puerto Rican city has two short parallel streets a block apart, called Atlantic Place and Pacific Place. When a name was needed for the thoroughfare connecting them, it was called—naturally—Panama Canal.

Danbury, Conn. (U.P.)—A novice holdup man was thwarted by an alert clerk who scared him away after noticing that the cylinder of his revolver was missing.

East Haven, Conn. (U.P.)—Louise Shea got a new set of seat covers installed in her automobile and it didn't cost a cent. Mrs. Shea left her car on the street. A man from a seat cover company picked up the wrong car, drove it to his shop and put on the covers.

Marblehead, Mass. (U.P.)—Edward Wall told police that someone cut down two trees in his yard. What really burned him up was that the vandals used his axe to do the job.

Union City, N.J. (U.P.)—The Common Man has cracked the ranks of the VIP's who display impressive signs to beat parking fines. An automobile parked in a 30-minute metered zone here bore this sign: "Taxpayer."

Secretary Needs More Than Typing, Shorthand
Chicago (U.P.)—It takes a lot more than just typing and shorthand to become a real secretary in today's business world, according to a Chicago office supply executive.

"Yesterday's secretary is dead," said Howard Wolf in discussing the fate of the girl whose office equipment consists of a pencil and typewriter alone. Wolf said his salesmen have found most business men require their secretaries to add "the talents of a printer, economist, purchasing agent, artist and electronics engineer — and enough practical business experience to act as an ex-officio administrator of company affairs."

Farms of the U.S. today have more cattle than any time in history.

1929 Prison Escapee To Face Extradition

Parchman, Miss. (U.P.)—Mississippi officials have begun proceedings to extradite a 64-year-old convicted killer who fled the state penitentiary in 1929 and became a Colorado deputy sheriff. Noverta R. Clayton, invalidated three years ago by a heart attack, was discovered Tuesday, living in Colorado Springs, Colorado, with his wife and four children, ranging in ages from six to 16.

His wife admitted she knew his secret. Clayton also has two grown sons by the wife he was convicted of slaying in Booneville, Miss., in 1928, and sentenced to life. In Colorado he was known to his children and neighbors as John Henry Adams, a retired deputy sheriff. Colorado authorities already have been notified of the proceedings.

Explosion Fatal To Three Workers

Liberal, Kan. (U.P.)—An explosion shattered the main engine room and office of Panhandle Eastern Pipe Line Co. late Wednesday, killing three workmen and injuring numerous others. At least eight workmen were hospitalized and two of them were listed as in critical condition. Several other men received minor injuries that required only first aid.

New State Withholding Tax Bill Said Prepared
Salem (U.P.)—State Rep. William Grenfell Jr. of Portland said today that he has prepared a bill for introduction in the legislature calling for a withholding tax program for Oregon, based on the federal system. The present state method of withholding income taxes is to take out a straight two per cent then either return an overcharge or bill for a balance due.

PENNEY'S
ALWAYS FIRST QUALITY!

NO JOB TOO TOUGH FOR PENNEY'S

TRIPLE TESTED
WORK CLOTHES

LABORATORY-TESTED for grueling wear!

DESIGN-TESTED for unsurpassed comfort! JOB-TESTED for all-round values!



MEN'S Western Cut Jeans
Penney's specially constructed jeans feature full proportioned cut in 13 3/4 oz. Sanforized denim. Cut in true western style, slim, trim and low. Sizes 29 to 38.

2.98



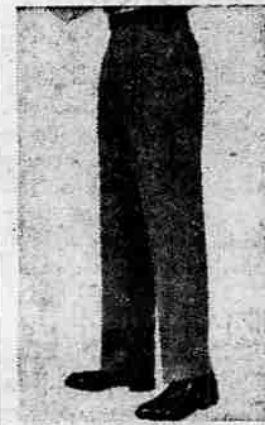
"BIG MAC" BIB OVERALLS
Rugged and thrifty for all those tough strenuous jobs. Big Mac reinforced construction. Sanforized 10 oz. denim. Sizes 30 to 48.

2.98



ALL WOOL WHIPCORD
17 oz. virgin wool. Size engineered patterns for perfect comfort and fit. Bartacked at all points of strain. New low prices!

Short Jacket 14.75
Cruiser Jacket 18.75
Pants sizes 30-42 **11 90**



RAYON AND NYLON Sheen GABARDINE
The machine washable slack! Colorfast, shrinkage controlled blend will not shrink out of fit. Sizes 29 to 42 in new shades for Spring. Ready cuffed 29-33 inseam lengths.

4.98



MEN'S FADED DENIMS
New spring shades grey, blue, and tan in your favorite slacks. Sanforized, machine washable denim. Sizes 29 to 40. Inseams 29-34. New Denim Stripes 3.49

3.98



MEN'S COTTON UNION SUITS
Long or short sleeve style in winter warm cotton insures protection in cold weather. Full cut for freedom of action. Shape-holding rib knit. Lock seams. Sizes 36-44.

1.98



15-Inch Boot Socks
Soft, warm, absorbent blend of 10% nylon, 25% cotton, 30% rayon, 35% wool. Combined for long wear and comfort. Sizes 10 1/2-12.

2 pair **98¢**



5-Inch Logger Boot Laces to Toe.
Chocolate oil tanned roseette upper, leather lined vamp, full stock gusset, leather outsole, safety gript.

D-2E Sizes 6-12 **14 95**



COMBED ARMY TWILLS

3 98
8.2 OUNCE PANTS

3 49
8.2 OUNCE SHIRTS

- rugged 2-ply army twill
- completely Sanforized†, even the foot-deep boatsail pockets!
- graduated sizes for comfort
- reinforced points of strain
- heavy duty zipper fly
- mercerized to stay lustrous
- vat dyed for long color life

BIG MAC® MATCHED TWILLS STURDILY WOVEN BOTH WAYS

Whether you'll want them for working or loafing these matched twills are tops for durability, wear and real Penney quality. Shirt sizes 14 to 17—Pants sizes 29-44

MEN'S White and Colored T-SHIRTS
Top quality cotton yarns woven for long wear. Non-stretch neck. Full cut, extra long. Sizes S, M, L, XL. **98¢**

NYLON BLEND WHIPCORD PANTS
Neat, trim forest green and grey in Wash 'N Wear nylon blend. Colorfast, will not shrink out of fit. Sizes 30-42. **7 90**

MEN'S DURENE COTTON BRIEFS
Rib knit elasticity helps hold shape. Full cut for freedom and comfort. Reinforced for long wear. Sizes 30-42. **79¢**

MEN'S LEATHER WORK GLOVES
Durably made for long last wear! Designed to fit well, feel comfortable. Sizes S, M, L. **1 49**

MEN'S LEATHER WORK BELTS
Top grain cowhide with sturdy metal buckle. Designed for long wear. Black and tan. Sizes 32-44. **1 00**

MEN'S SWEAT SOCKS
Sanitized. Resists growth of bacteria and fungi, retards odors from perspiration, prevents destruction of fibers. Sizes 10 1/2 to 12. 2 pr. **1 18**



8" CORD SOLE
Oil tanned cowhide upper with full leather midsole plus cord-on-end outsole and heel for long wear. A rugged boot. D and 2E. 6 1/2 to 11.

D, EE and EEE **10.95**



8" Plain Toe Logger Heel. Oil tanned with leather lined vamp. Top grade leather sole with non-marking rubber. Tap sole. All leather logger heel. Sizes C, D, 2E. 6 1/2-11.

13.95



Penney's Foremost® Sturdy Work Shoe. Soft elk-finish cowhide, leather midsole. Non slip cork and rubber sole. Leather covered sponge cushion insole. Sizes 6 1/2 to 11. Widths D and 2E.

sizes 7 to 12 **7.50**

OAKDALE MARKET
PRICES EFFECTIVE—Thurs. Eve., Fri., Sat. and Sun.

CATSUP - PEAS - APPLESAUCE
WE REDEEM STANDBY COUPONS

STANDBY Buy The Best 5 FOR 89¢

CHEF DINNERS Meat or Mushroom 39¢ each	CARNATION CANNED MILK 3 cans for 35¢	JEWEL SHORTENING 3 lb can 79¢
--	---	--

JIMMY ALLEN BAKERY—DINNER ROLLS—DANISH PASTRY
DANISH COFFEE CAKE **49¢ Each 35¢ Doz. 6 for 29¢**

FILL A TOTE BAG
Grapefruit—Oranges **39¢ bag**
Newtown and Delicious Apples
Potatoes—Yellow Onions

Lettuce Head 10¢ Carrots Bag 10¢

DOUBLE THURSDAY NORTHERN STAMPS DOUBLE THURSDAY

ROUND STEAK U.S. GOOD 63¢ lb	SPARE RIBS LITE-FRESH 47¢ lb	Bologna Salami SLICED or CHUNK 39¢ lb	GROUND BEEF NO CEREAL 3 89¢
--	--	---	---

HAMS Half or Whole 59¢ lb CUBE STEAK 89¢ lb

WE RESERVE THE RIGHT TO LIMIT QUANTITY