



'EISENHOWER DOCTRINE' EXPLAINED—Secy. of State John Foster Dulles (second from right) is shown as he appeared before the House Foreign Affairs Committee in Washington to explain the "Eisenhower Doctrine" for the Middle East. Looking at map of the area are, left to right: Capt. W. C. Mott, military assistant to Adm. Radford; Adm. Arthur Radford, chairman of the Joint Chiefs of Staff; Dulles, and Rep. Thomas Gordon (D-Ill.), committee chairman.

### Four Classifications Of Residents Eligible For Tax Exemptions

Four classifications of residents are eligible for tax exemptions not to exceed \$7,500 of the true cash value of home- stead or personal property, the county assessor reminded taxpayers today. Deadline for filing exemptions under the law is April 1, although eligible taxpayers may file for their exemptions immediately. The four classifications are: (1) Any honorably discharged union veteran of the Mexican, Civil, Indian or Spanish-American wars, the Philippine Insurrection or the Boxer Rebellion. (2) Any war veteran who, as officially certified by the veterans' administration or any branch of the armed forces of the United States is rated as having disabilities of 40 per cent or more. Other Disabilities (3) Any war veteran having served with the U. S. arm'd forces who, as certified by the county health officer and one other duly licensed physician of his county of residence, is rated as having disabilities of 40 per cent or more. However, no such veteran shall be entitled to the exemption if he has received more than \$2,500 total gross income during the last calendar year including pensions, disability compensation or retirement pay, or any combination of such payments from the government. (4) A war veteran's widow remaining unmarried, but her exemption shall apply only to the period preceding the date of her first remarriage. These exemptions are provided under Oregon law. Further information and exemption affidavits are available at the county assessor's office.

### Great Decisions Meeting Thursday

All persons interested in the formal study of United States foreign policy are invited to a Great Decisions . . . 1957 meeting at 8 p.m. Thursday in the courthouse auditorium, according to Mrs. John Ousterhout, chairman of the temporary county committee.

Coffee will be served following the short talks and a brief film on Great Decisions participation.

The meeting is to aid persons planning to participate in the eight-week Great Decisions program centered on informal home discussion groups, which begins January 20, Mrs. Ousterhout said. Great Decisions . . . 1957 is sponsored on a state-wide basis by the Oregon State college extension service in cooperation with the Foreign Policy association, the general extension division of the state system of higher education, the state library, state department of education, the Portland Oregonian, the World Affairs council of Portland and other organizations and agencies. Mrs. Mabel C. Mack, assistant director of the Oregon State college extension service, and Dr. Curtis Reid, head of the department of visual instruction, general extension division, will also take part in the meeting.

**COSTLY ALARM**  
Detroit—(U.P.)—George Yates, 54, told firemen who arrived on three trucks he had turned in an alarm because four young toughs had threatened him. Yates was fined \$150 and placed on a year's probation.

### Consumers To Pay Higher Prices For Pork in 1957 Than Last Year

Washington—(U.P.)—The Agriculture Department said today consumers will pay higher prices for pork and possibly higher grades of beef this year than during 1956.

Total 1957 meat production is expected to be less than the 1956 record, the department said in its publication, "The Livestock and Meat Situation." Production probably will be cut heaviest in the first half of the year, with most of the reduction in pork.

The department said farm prices of hogs, which had advanced \$2.50 per 100 pounds in late December from their mid-

November low, may strengthen somewhat more this winter.

A downturn is probable when marketings from the fall pig crop are largest. A new seasonal upturn, however, is likely in the spring. Prices of hogs during most of 1957 likely will be above 1956.

The price situation for both consumers and producers stems from the supply of hogs. The 1956 fall pig crop was down 4 per cent, and producers planned Dec. 1 to reduce the spring crop 2 per cent. This indicates that hog slaughter during most of all of 1957 will remain below 1956. The department said that by year's end, the difference will be small.

By the end of 1956, hog slaughter was substantially less than the previous year. On Dec. 1, the number of good butcher hogs was almost one-fifth less than a year before, and the reduction on Jan. 1 probably was about the same.

The department said farm prices for cattle in 1957 will remain close to those of a year ago. Cattle slaughter has been extremely large because many cattle were put on feed early and marketed rapidly after only moderate feeding. Also the rate of marketing for young cattle was speeded, in contrast with delayed marketing last winter, and lack of feed forced larger marketings from drought areas.

The department predicted mar-

ketings of fed cattle will be distributed more evenly by seasons in 1957 than in 1956. It said total cattle slaughter probably will continue to be large in most months.

Drought will be a major factor affecting cattle slaughter and prices in 1957. If the drought is not severe, prices may average as high or slightly higher than in 1956.

Prices of fed steers are expected to level out after their late fall decline and to stay higher this winter and spring than their lowest point last winter. Severe drought would expand slaughter and prevent improvement in prices.

The department said lamb prices are likely to rise seasonally and may remain for a time a little higher than last year.

### Harold White Speaks To Farmers Group

Harold White, superintendent of the Southern Oregon branch experiment station, spoke to the Jackson County Young Farmers group Monday night.

White discussed work being done in research at the local station, emphasizing research on alfalfa, corn and other grasses. He also told effects of fertilizer trials on various research projects. Slides were shown to illustrate his talk.

President of the Young Farmers is Lee Hoxworth; vice president, Fred Offenbacher; secretary, John Ousterhout; and treasurer, Nat Etzel.

### County Farm Bureau Attends Bend Meeting

Nine members of the Jackson County Farm Bureau organization committee attended the Oregon Farm Bureau federation organization meeting in Bend Monday.

Purpose of the meeting was to provide an outline for organization committees of county bureaus in the coming state-wide membership drive.

The Jackson county membership drive will start at a "kick-off" breakfast at 9 a.m. Monday, Jan. 14, at the Medford hotel. Residents of the county interested in joining the Farm Bureau may contact members by telephoning Medford 3-1198, Ashland 8901 or Vailley 6-3779, officials said.

### American Bridge Team Gains Points

New York—(U.P.)—The American contract bridge team continued whittling points from forerunning Italy early today in the duel for the world championship.

At the end of the session which began Tuesday the Italians held a 780-point lead. This was the slimmest lead the European bridge champions have held since the first session last Sunday.

The Americans went into the evening session 1,100 points behind. They gained 320 points on the Italians by concentrated play of 24 boards which offered few spectacular hands.

### New York Police Forced To Reject Call for Help

Albany, N. Y.—(U.P.)—New York state police have been called on for many things, from retrieving lost horses and babies to rounding up criminals and checking on stolen cars. But recently they were called upon to perform a job that they just had to turn down.

A Westchester County housewife telephoned the nearby barracks and said she "needed an extra man" for a dinner party that night.

"That's a little out of our line," she was told.

### Trees Furnish Fat For Texas Cattle

Carrizo Springs, Tex.—(U.P.)—Adversity can be a good teacher, a South Texas rancher has learned.

C. E. Dolin had been struggling for years to keep his cattle herd going during the long Texas drought.

As a desperation experiment, Dolin began cutting mesquite trees and feeding them to his cattle.

The mesquite is a scraggy hardwood that infests the western and southern parts of the state and generally is considered quite useless. Many ranchers have spent thousands of dollars trying to get rid of the bushy tree which has long tap roots and flaring side roots that suck up as much as 500 gallons of water a day from the subsoil.

Dolin worked out his "sawdust" plan by cutting the tenderest top parts of the tree and shredding them. Next, he put them through a grinder, producing a meal-like substance.

Then he mixed the product in a 10-to-9 ratio with molasses, grain, and cotton seed meal. He fed the mixture to his cattle and was amazed to find them growing sleek and fat. His first shipment brought top prices at the San Antonio market.

Dolin credits the mesquite with saving his herds. He plans to market 4,000 head of mesquite-fattened steers a year and can produce the mesquite meal for \$5 a ton in an area where imported hay costs from \$40 to \$50 per ton.

The rancher's formula is 1,000 pounds of mesquite meal to 500 pounds of molasses, 200 pounds of grain and 200 pounds of cotton seed meal.

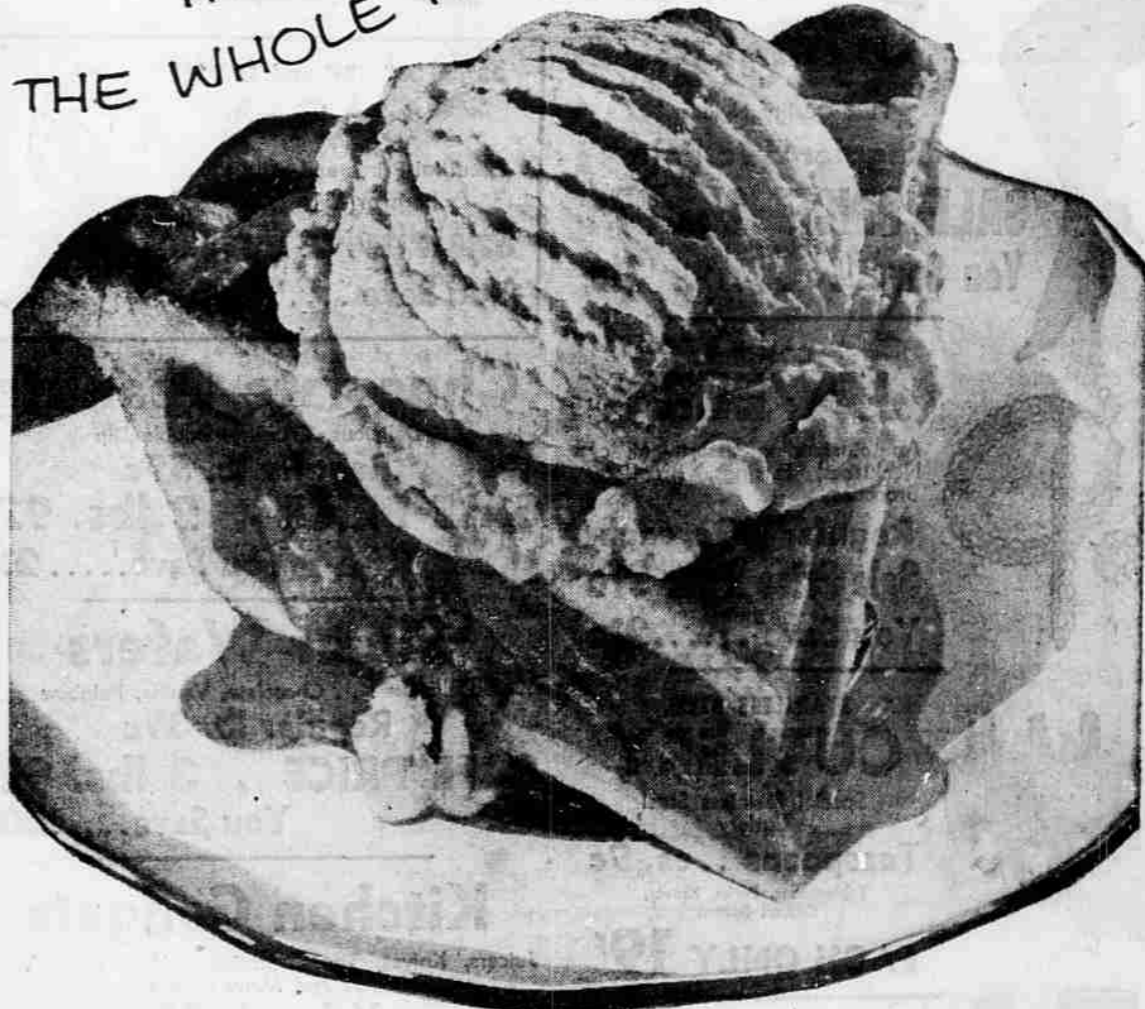
Dolin stacks his tree tops for a five-day curing period. The drying out process makes it easier for the trees to be shredded in a chipping machine but doesn't cause any loss of their amazing amount of vitamins.



# Sniders

## ICE CREAM

THE FUN FOOD THE WHOLE FAMILY LOVES!



Take home plenty for the week end!



### MAKES MANY TREATS TWICE AS GOOD!

Something mighty good happens when you add Snider's Ice Cream to your favorite pie, cake or fruit. It's SO GOOD with SO MANY THINGS that you'll want to keep a few cartons in your freezer compartment all the time.

ICE CREAM IS PURE PLEASURE

## NOW... AT WEISFIELD'S

# Great Opportunity Sale

NOT A DISCONTINUED PATTERN FOR A LIMITED TIME

## 1/2 OFF

OPEN STOCK PRICE

### ON THE CELEBRATED CORONATION PATTERN IN COMMUNITY

The Finest Silverplate

#### 53-Pc. SERVICE for 8

Regular Open Stock Price . . . \$99.75

NOW . . . **SAVE 1/2** **49.85** CHEST OPTIONAL EXTRA

**\$1.00 A WEEK WILL DO!**

SET INCLUDES: 16 Teaspoons, 8 Salad Forks, 1 Sugar Spoon, 8 Dinner Knives, 8 Oval Soup Spoons, 8 Dinner Forks, 1 Butter Knife, 1 Pierced Serving Spoon and 2 Regular Serving Spoons.

76-pc. SERVICE for 12 NOW **69.95**  
Reg. Open Stock Price \$141.50

Savings for CORONATION Set Owners:

FILL-IN PIECES AVAILABLE IN OPEN STOCK AT 1/2 OFF

	REGULAR	SALE
Teaspoons . . . . .	\$1.00	\$.67
Soup Spoon, Round Bowl . . . . .	2.00	1.33
Table Spoon . . . . .	2.25	1.50
Grille Fork . . . . .	2.00	1.33
Salad Fork . . . . .	2.00	1.33
Dinner Knife . . . . .	3.00	2.00
Butter Spreader . . . . .	2.00	1.33
Pastry Server . . . . .	4.50	3.00
Dessert or Soup Spoon . . . . .	2.00	1.33
Iced Drink Spoon . . . . .	2.00	1.33
Dinner Fork . . . . .	2.00	1.33
Oyster Fork . . . . .	2.00	1.33
Cold Meat Fork . . . . .	3.50	2.33
Grille Knife . . . . .	3.00	2.00
Gravy Ladle . . . . .	3.50	2.33

**ORDER BY MAIL WEISFIELD'S**

THE WEST'S LARGEST CREDIT Jewelers

122 E. Main Phone 3-5348  
Medford, Oregon  
Store Hours: 9:30 a.m. to 5:30 p.m.

WEISFIELD'S JEWELERS, 122 E. Main, Medford  
Please send me the 53-Piece Set of Coronation Silverplate priced at \$49.85. I am enclosing \$\_\_\_\_\_ and will send \$\_\_\_\_\_ per week or \$\_\_\_\_\_ per month until the entire amount is paid.

76-Pc. Service for 12 \$69.95  
Anti-Tarnish Chest 8.00

Open Stock Pieces \_\_\_\_\_ Total \$ \_\_\_\_\_

Name \_\_\_\_\_ Phone \_\_\_\_\_  
Address \_\_\_\_\_ How Long \_\_\_\_\_  
City \_\_\_\_\_ Zone \_\_\_\_\_ State \_\_\_\_\_  
Where Employed \_\_\_\_\_ How Long \_\_\_\_\_  
Credit Reference \_\_\_\_\_  
(Firm Name and Where Located)

**PICTURE TUBES REJUVENATED**

Is your picture tube dull and weak? Most picture tubes can be restored to original brightness at only a fraction of the cost of replacement. For further information CALL

**Electronic Service**  
18. N. GRAPE PH. 3-1971